

Running Board Instructions

7070 - 7071(1" Drop)

2016-Current Nissan Titan Single/King/Crew
2004-2015 Nissan Titan King/Crew Cab
2004-2015 Nissan Armada

(No Drilling Required)

INSTALLATION PACKAGE

Running Board	2
Bracket s	8
Support Plates	8
Bolt Pack (Brackets)	1
Bolt Pack (Boards)	1

Necessary Tools

Ratchet wrench with ½" & 13 mm socket
Combination wrench
Safety glasses

Bolt Pack Brackets

8mm x 20mm Hex Bolts	24
8mm Flange Nuts	16
5/16" Flat washer	32

Bolt Pack Running Boards

5/16" x ¾" Hex Bolt	16
5/16" x ¾" Serrated Flange Nut	16

STEP ONE : Determine proper bracket placement.

1. The factory 2004-2015 8mm studs on upper rocker panel 2016-Current 8mm holes and factory 8mm holes on lower angled rocker panel on the underside of the vehicle on each side were the brackets need to be placed. Factory black plug must be removed to reveal factory threaded holes.
2. Mount support plate as shown Fig A. Hand tighten 8mm bolt with washer. Next, hand tighten brackets on 2004-2015 stud using 8mm nuts or 2016-Current hole using 8mm bolt Fig B and attach lower portion of bracket with 8mm bolt, washer and nut to support plate.
3. Place board on brackets with bracket mounted in position. Look on underside of board to which channel match up with bracket slots to slide 5/16" bolts down on underside of board so bolt stud will lined up with bracket slots. You will only need one bolt to secure board to each bracket. Two bolts per bracket are supplied if applicable. Loosely hand tighten 5/16" nuts to hold board to brackets
4. Fully tighten all brackets. Adjust board to center on cab front to back and adjust in and out for desired step area. Tighten outside brackets first then inside bracket accordingly. Fully tighten all brackets.

STEP TWO : Board Installation Check.

- 1) Check all bolts to verify completed mounting and tightness. Installation is complete

Fig A

Remove plastic plug and fasten support bracket with 8mm bolt & washer.

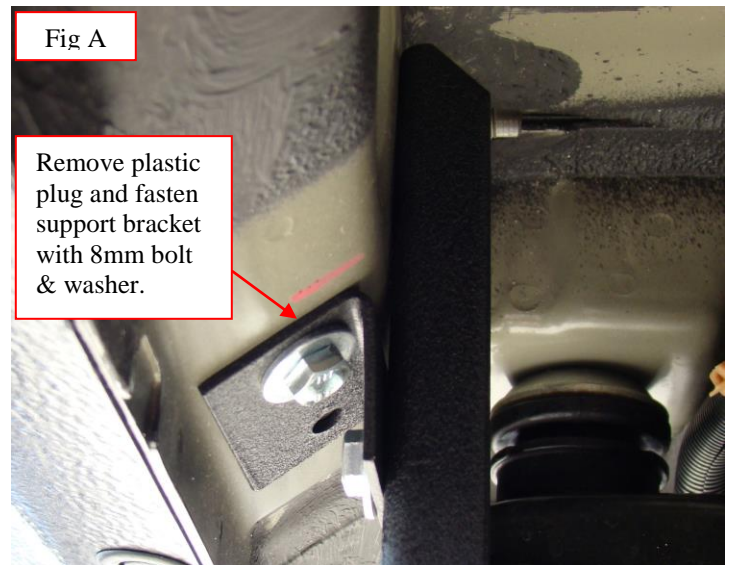


Fig B

2004-2015
Fasten to 8mm factory stud with washer and 8mm flange nut.

2015-Current
will use washer and 8mm bolt

Lower slot on bracket attaches to support plate with 8mm bolt, washer & flange nut.

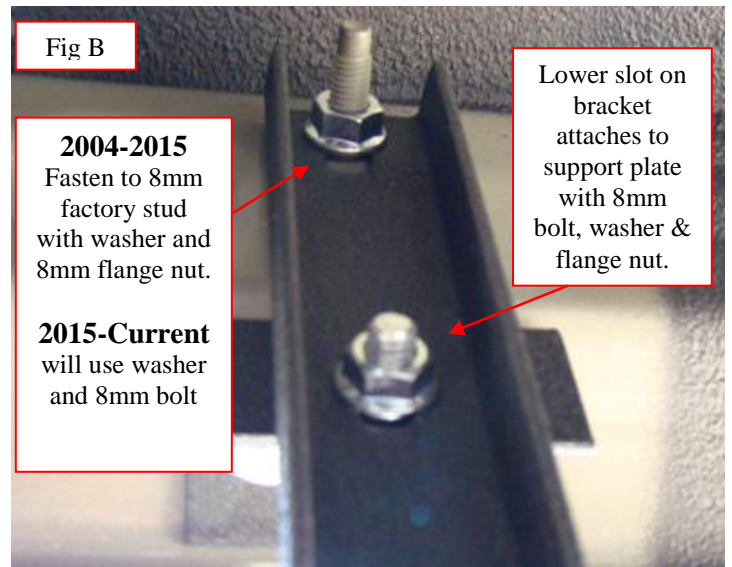


Fig C

