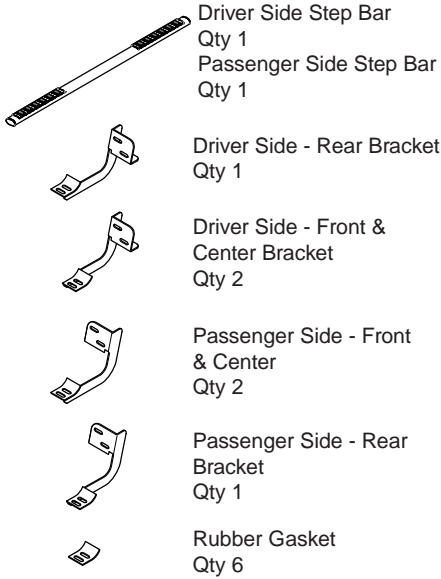
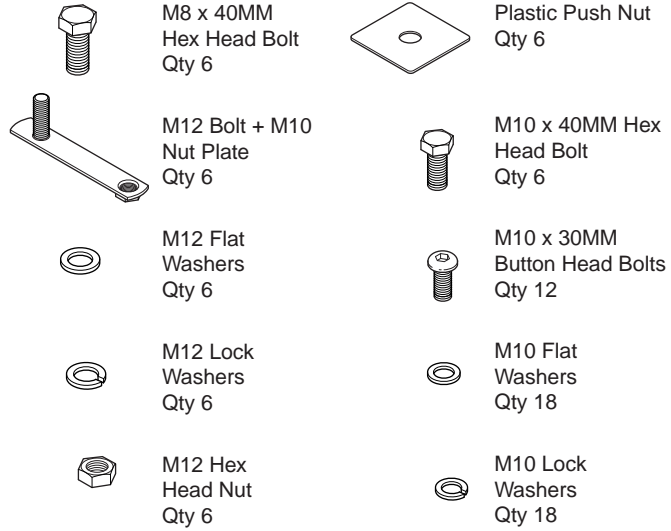


6" OVAL BAR

Components:



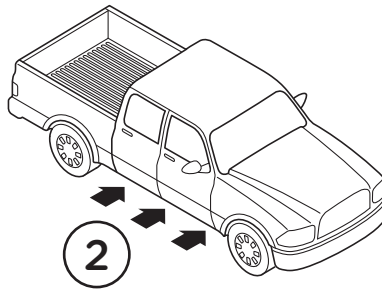
Hardware:



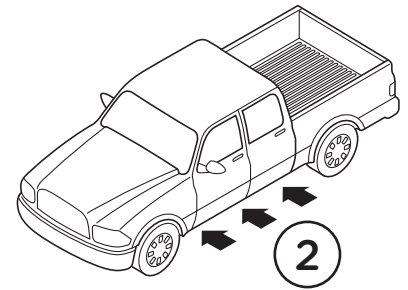
1. Remove all contents from the package and check stainless steel tubes for any damage. Also, verify that all components and hardware listed above are included before you begin installation.

2. Locate factory holes in six (6) places underneath body mount.

Passenger Side

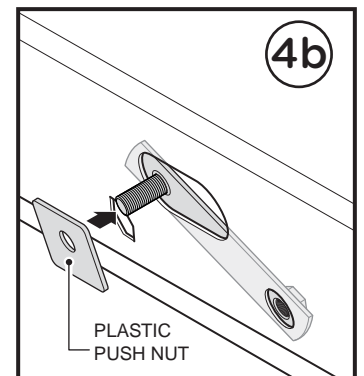
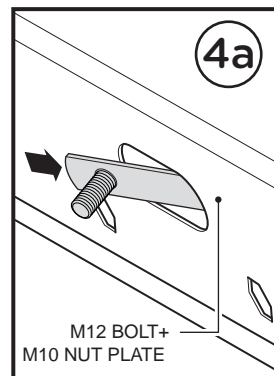
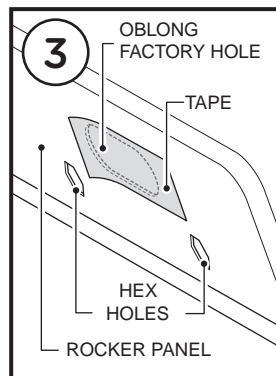


Driver Side



3. Remove the **Tape** covering the factory oblong hole in the rocker panel located above the two (2) hex holes.

4. Place the Plastic Push Nut onto the stud of the M12 Bolt + M10 Nut Plate (4b). Then, slide the M12 Bolt + M10 Nut Plate into the hole in the rocker panel as shown (4a).



5. Front & Center Bracket
Cradle face to the rear of
truck and Rear Bracket
Cradle truck.

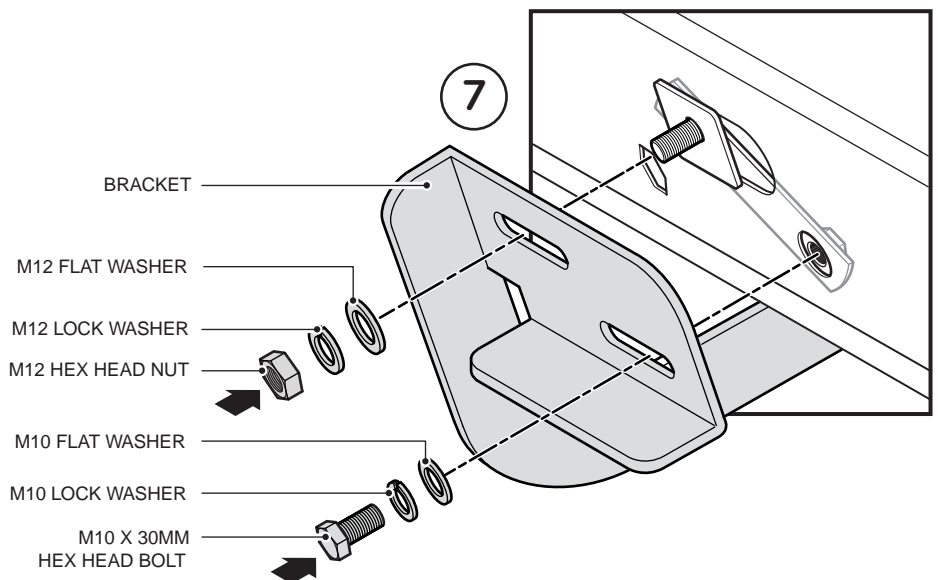
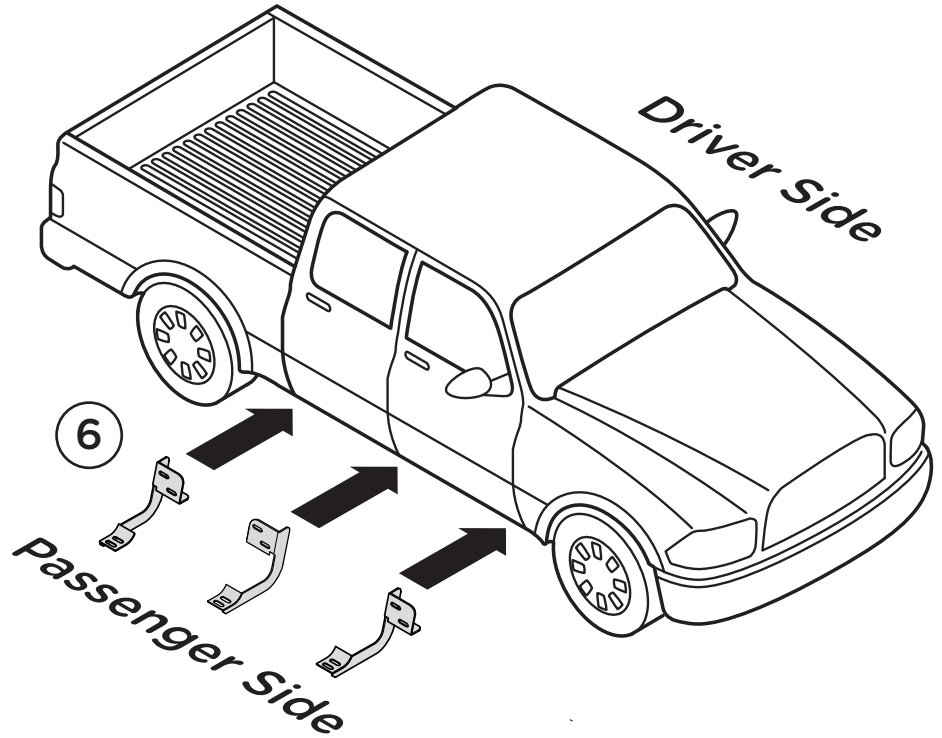
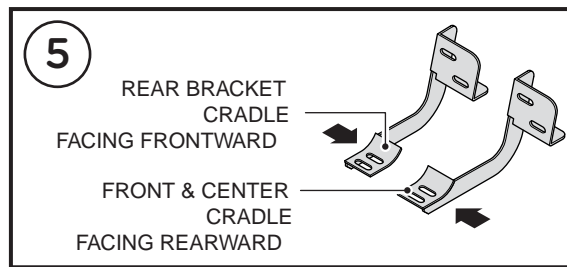
6. Begin installation on
passenger side. Position
Front Bracket, Center
Bracket and Rear Bracket as
shown along passenger side.

7. Line up each bracket to the
12 Bolt + M10 Nut Plate located
in the rocker panel.

Fasten the Bracket onto the
M12 Bolt using one (1) M12 Flat
Washer, one (1) M12 Lock
Washer and one (1) M12 Hex
Head Nut.

Fasten the Bracket to the
threaded nut using one (1) M10
Flat Washer, one (1) M10 Lock
Washer and one (1) M10 x
30MM Hex Head Bolt.

If threaded inserts already exist
in rocker panel holes, use (1)
M8 Flat Washer, one (1) M8
Lock Washer and one (1) M8 x
40MM Hex Head Bolt.



8. Place the Rubber Gaskets onto each Bracket Cradle (8a.) Then, place the Step Bar onto the Brackets and fasten using two (2) M10 Flat Washers, two (2) M10 Lock Washers and two (2) M10 x 30MM Button Head Bolts (8b).

Tighten until the split lock washer is at against bracket and snug. **DO NOT** over tighten and strip the threaded insert in the tube.

Repeat these steps for driver side installation. When all hardware is in place, everything must be tightened. See Page 1 for Torque Specifications.

