

804 NW 24th Court Ocala, FL 34475 / 877-864-0644

INSTALLATION PACKAGE	
Installation Instructions	1
Bracket	8
5/16" x 3/4" Hexhead bolt & nut	8
Flat washer	16
Self-tapping screw	8
Rubber Step Tape	2

Necessary Tools	
Measuring Tape	
Ratchet wrench with 1/2" socket	
Combination wrench	
Variable speed drill w/ 3/8" hex head drive	

STEP ONE: Determine proper bracket placement

- 1) Measure from the inside of the front fender well back
- 1) Place brackets at 16", 30", 51", and 63"

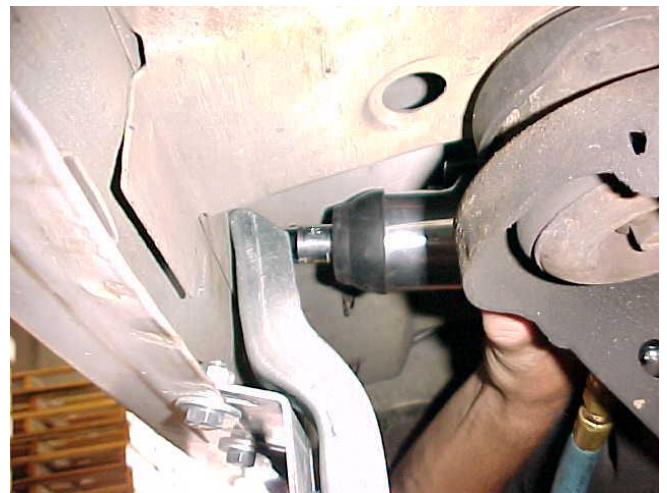
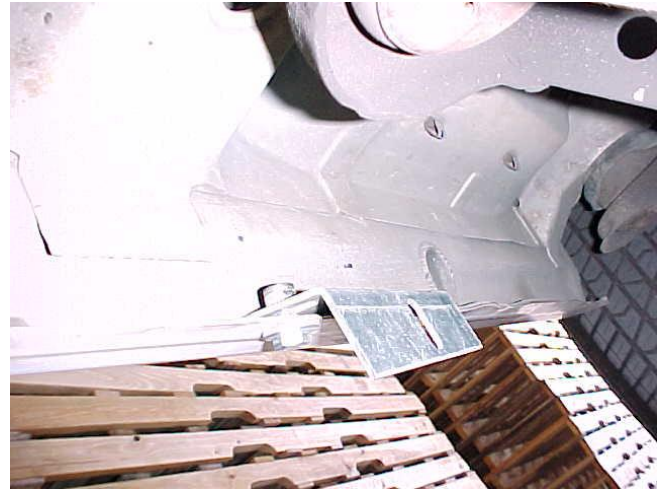
STEP TWO: Loosely bolt brackets to vehicles

- 1) Tek screw hanger brackets into the pinch weld
- 2) Loosely bolt the brackets to the hanger brackets
- 3) Place the running board on the brackets with the support Bolts falling thru the slots in the foot of the bracket
- 4) Hand tighten the board to the brackets using 5/16" lock nuts
- 5) Slide board in or out to desired location
- 6) Tighten down lock nuts under running board

STEP THREE: Tighten brackets

- 1) Push board tight against vehicle and tighten bolts Fig C
- 2) Put tek screws thru top of bracket into side wall Fig B

Fig A



Blazer S-10 Bracket Instructions