

Running Board Instructions

3050

Ford F-150 Super Crew 2009-Current
No Drilling Required

INSTALLATION PACKAGE

| | |
|----------------------|----|
| Running Board | 2 |
| Brackets | 10 |
| Bolt Pack (Brackets) | 1 |
| Bolt Pack (Boards) | 1 |

Necessary Tools

| | |
|----------------|------------------------|
| Socket Set | Combination Wrench Set |
| Safety glasses | |

Bracket Bolt Pack

| | |
|-------------------------|----|
| 5/16" x 1 1/4" Hex Bolt | 6 |
| 5/16" x 3/4" Hex Bolt | 4 |
| 5/16" Flat washer | 20 |
| 5/16" Flange Nut | 10 |
| 5/16" Long U-Nut | 4 |
| Bolt plate (P/N S-1837) | 4 |

Running Board Bolt Pack

| | |
|-------------------------|----|
| 5/16" x 3/4" Hex Bolt | 20 |
| 5/16" x 3/4" Flange Nut | 20 |

Step 1: Lay out your bracket kit make sure you have a complete set and read installation instructions thoroughly before beginning installation.

Step 2: There are five factory mounting locations on your vehicle pinch weld and rocker panel. Factory tape may be covering these locations and should be removed. **See figure 1.**



Fig. 1

Factory black tape must be removed

Step 3: For the front and rear bracket locations, (1st & 5th locations), you will need to install a 5/16" long u-nut to attach the bracket to the rocker panel. Make sure that the u-nut lines up with the factory hole in the pinch weld. **See figure 2.**

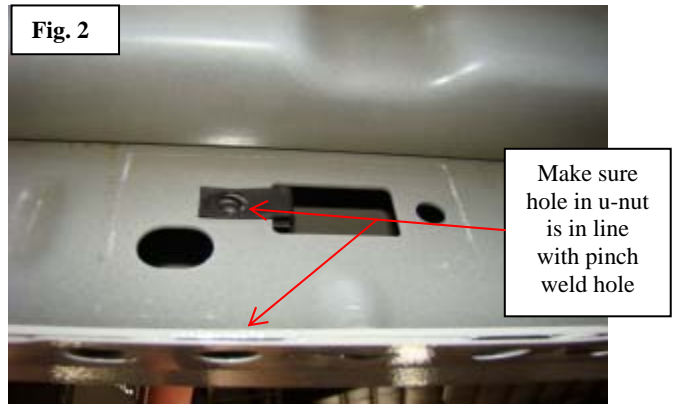


Fig. 2

Make sure hole in u-nut is in line with pinch weld hole

Step 4: Attach the bracket to rocker panel using 5/16" x 3/4" hex bolt and washer to the installed u-nut. Do not fully tighten. Now install a 5/16 x 1 1/4" hex bolt, washer and flange nut through pinch weld hole and hole in the bend of bracket. **Note:** Remember this step is done at the front and rear mounting locations. **See figure 3.**

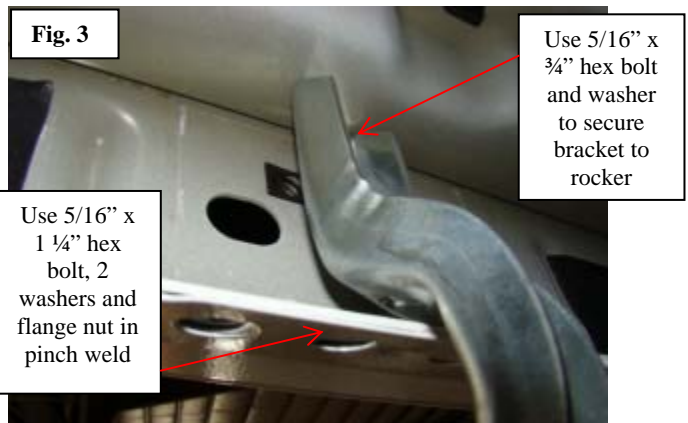


Fig. 3

Use 5/16" x 3/4" hex bolt and washer to secure bracket to rocker

Use 5/16" x 1 1/4" hex bolt, 2 washers and flange nut in pinch weld

Step 5: For the middle front and middle rear, (2nd & 4th), mounting location you will need to loosely attach the bolt plate, (P/N S-1837) to the bracket using a washer and flange nut and install it into the rocker panel. Finger-tighten only, do not tighten all the way. No pinch weld bolt is required in these locations, only the rocker panel mount. **See figures 4 & 5.**

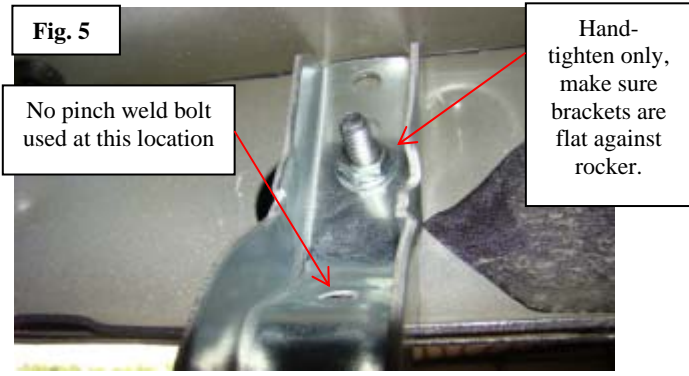


Fig. 4

Attach bolt plate to bracket then insert into hole in rocker

IONIC

AUTOMOTIVE



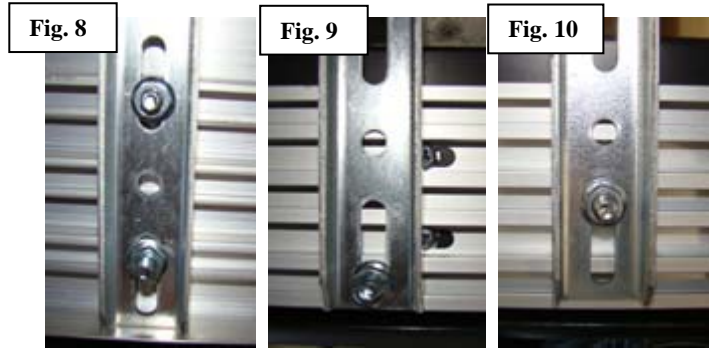
Step 6: Attach the a bracket in the center (3rd) location using a 5/16" x 1 1/4" hex bolt, 2 washers and a flange nut through pinch weld of vehicle, hand tighten only. No bolts are used in the rocker panel in this location, pinch weld only. See figure 6.



Step 7: Place board on brackets with bracket mounted in position. Look on underside of board to which channel will match up with bracket slots to slide the 5/16" bolts down on the underside of board so bolt stud will be lined up with bracket slot. You will only need one bolt to secure board to each bracket. Two bolts per bracket are supplied if applicable. Loosely hand-tighten 5/16" nuts to hold board to brackets. See figure 7.



Step 8: There are several configurations to mount the boards to the brackets. We have provided some suggestions in the figures above. These changes allow you to adjust the board in or out according to your step preference. All are correct. See figures 8, 9 & 10.



Step 9: Fully tighten all brackets. Adjust board to center on cab front to back and adjust in and out for desired step area. Tighten outside brackets first then inside brackets accordingly. Fully tighten all brackets.

Step 7: Check that all brackets are tight before stepping on boards.



Here is the finished product. You may have different boards than shown.

IONIC
AUTOMOTIVE