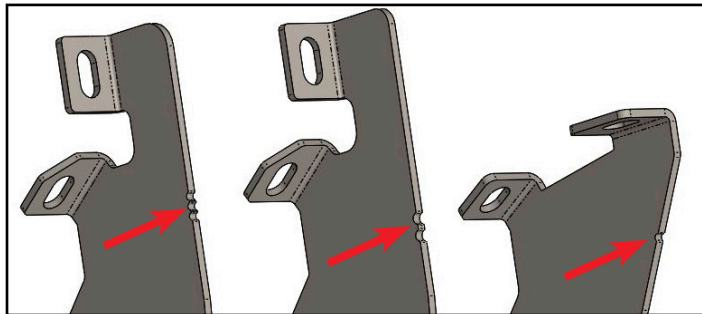


2020-CURRENT FORD RANGER CREW CAB

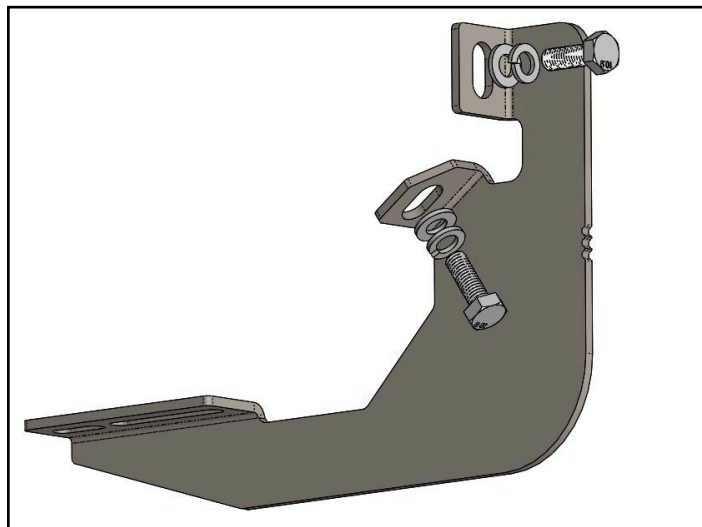
Bracket Hardware:

Bracket (location 1, one notch).....	2
Bracket (location 2, two notch).....	2
Bracket (location 3, three notch).....	2
Bolt M10 X 30mm.....	12
Flat Washer M10, 18mm OD.....	12
Lock Washer M10.....	12



STEP 1:

There are six total brackets in your kit. Each bracket has a notch on the back of the bracket spine. This determines the location of the bracket. The bracket with one notch is location one, furthest towards the front. Two notch bracket is the middle. Three notch bracket is the closest towards the rear.



STEP 2:

Locate the threaded holes in the Ranger located underneath at the rocker panel. Assure these holes are clean and free of dirt and debris. Take a M10 bolt with lock and flat washers feed through the bracket and into the threaded hole under the Ranger. Just hand tighten at this time. Install all six bolts with washers.

Board Hardware:

Running Board.....	2
Bolt 5/16" X 3/4".....	12
Flange Nut 5/16".....	12



STEP 3:

To install running boards on the brackets, obtain the board bolt pack included with the board you selected. Take the 5/16" X 3/4" long bolts, slide the head of the bolts down the channels on the underside of the board. Three bolts in both channels.



STEP 4:

Place board on installed mounting brackets. Align the bolts with the slots on the brackets and drop then into place. Thread the provided 5/16" flange nuts onto the bolts, do not fully tighten just yet. Adjust board left to right and in and out to your desired position.

Avoid using power or air tools. Tighten all board and bracket hardware to 20ft lbs torque.