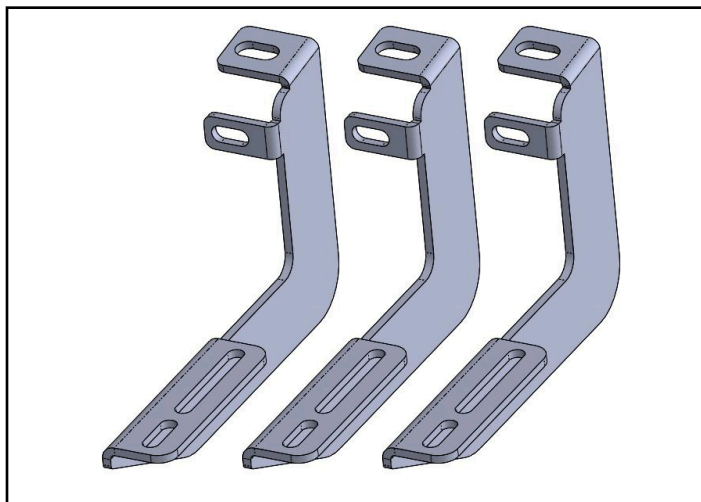


2020-CURRENT FORD EXPLORER

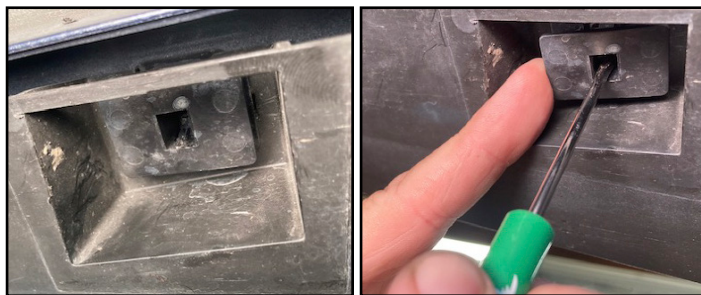
Bracket Hardware:

Bracket.....	6
M6 X 1mm, 25mm long, Bolt.....	2
M6 Flat Washer 20mm OD.....	4
M6 Serrated Flange Nut.....	2
M8 X 1.25mm, 30mm long, Bolt.....	6
M8 Flat Washer, 20mm OD.....	18
M8 Serrated Flange Nut.....	12
M8 x 1.25mm, 30mm long, Bolt Plate.....	6
M8 Plastic Retainer.....	6



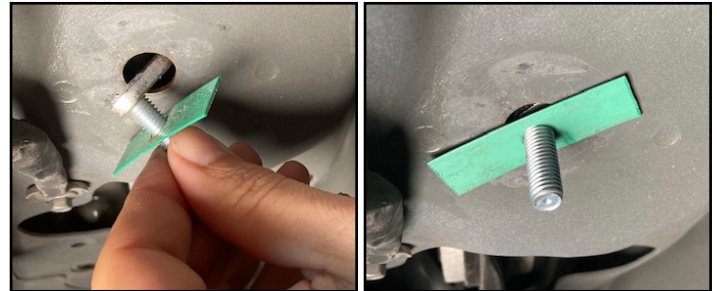
STEP 1:

There are six identical brackets in your kit. Three used per side.



STEP 2:

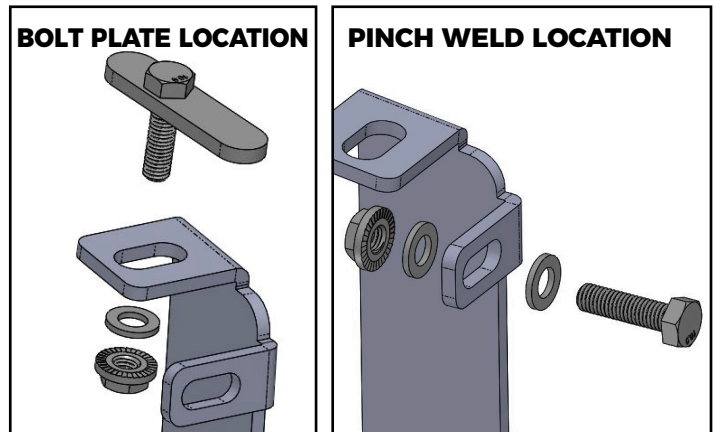
First, release all the clips on the underside of the plastic rocker cover. These clips require using a small screwdriver or pick. Use either tool to pry and release the clip as shown above. With all the clips released will allow the rocker panel to be loose enough to access mounting holes at the pinch-weld.



STEP 3:

Each of the Bolt plates will require threading on the plastic retainer. The retainer assists with holding bolt plate in place and keeps it from being pushed inside the body of the vehicle.

With retainer threaded to the stud feed through the hole and rotate the stud to face out. Next hold the stud and thread the retainer down the stud to hold it tight against the body.



STEP 4:

Place bracket's top tab over the bolt plate stud and hand thread the M8 washer and serrated flange nut.

Now use the M8 bolt washer through the Explorer pinch weld hole, through the bracket lower tab and thread the flat washer and serrated flange nut.

NOTE: The pitch-weld hole for the middle bracket is slightly smaller hole. The hardware kit includes M6 hardware to accommodate this smaller hole size. If you face issues fitting the M8 hardware, then use the provided M6 hardware instead.

Snug all bracket hardware but don't fully tighten. This will assist for adjustment.

2020-CURRENT FORD EXPLORER

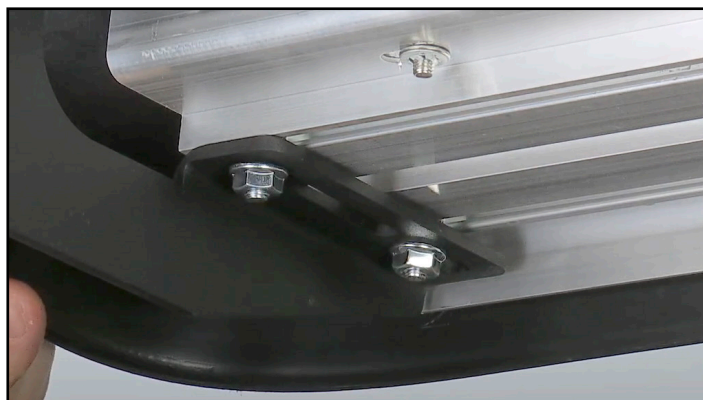
Board Hardware:

Running Board.....	2
Bolt 5/16" X 3/4".....	12
Flange Nut 5/16".....	12



STEP 5:

To install running boards on the brackets, obtain the board bolt pack included with the board you selected. Take the 5/16" X 3/4" long bolts, slide the head of the bolts down the channels on the underside of the board. Three bolts in both channels.



STEP 6:

Place board on installed mounting brackets. Align the bolts with the slots on the brackets and drop then into place. Thread the provided 5/16" flange nuts onto the bolts, do not fully tighten just yet. Adjust board left to right and in and out to your desired position.

Avoid using power or air tools. Tighten all board and bracket hardware to 20ft lbs torque.

Reinstall all the OE hardware (clips) of the rocker panel. Then apply the same steps to the other side of the vehicle.