

Running Board Instructions

1078 & 1079

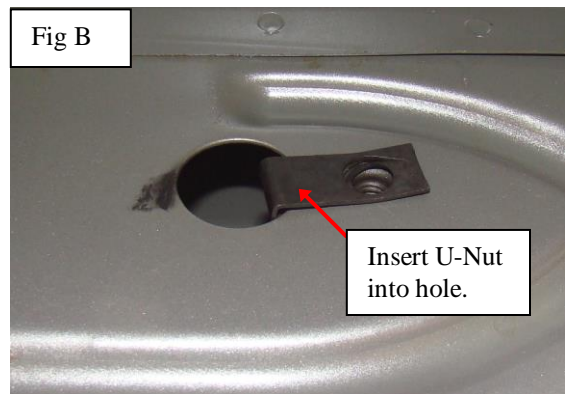
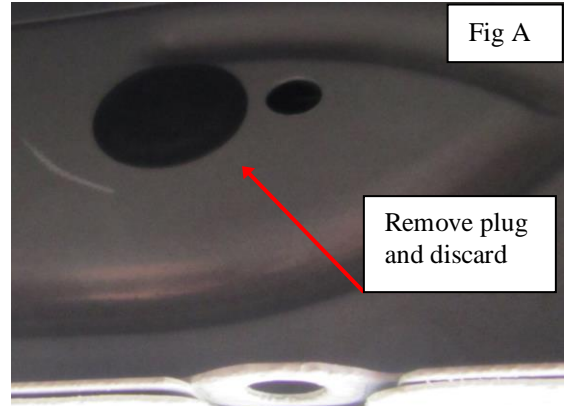
(14 - C) Silverado / Sierra Reg / Double Cab

Installation Package	
Installation Instructions	1
Bracket	8
Bolt Pack	2
Running Board Set	1

Necessary Tools	
Ratchet wrench with 1/2" or 13mm socket	
Safety Glasses	

Bolt pack for bracket installation	
5/16" U-Nuts	8
5/16" * 3/4" Hex Bolt	8
5/16" x 1 1/4" Hex Bolt	8
5/16" Flat washer	16
5/16" Serrated Flange Nut	8

Bolt pack for running board installation	
5/16" x 3/4" Hex Bolt	16
5/16" x 3/4" Serrated Flange Nut	16



STEP ONE: Mount brackets to vehicle

- 1) Locate and remove black grommets on the underside of your vehicle below doors, which are above the holes in the pinch weld Fig A. There will be 8 total. Now place a U-Nut in each hole with threaded end on the inside of rocker panel. Fig B. Note the 3rd bracket location from the front will have an oval black plug and 2 holes one on each side. Be sure to place the U-Nut in the correct hole above the pinch weld hole Fig A. Now mount each bracket to each location using a 5/16" * 1 1/4" bolt with washer by putting it up through the pinch weld hole through the bracket and secure with flange nut. Then use the 5/16" * 3/4" bolt with washer through bracket into rocker panel previously installed U-Nut to secure the top part of the bracket Fig C. Loosely bolt these to the vehicle.
- 2) Tighten fasteners snug 5/16 x 1 1/4" bolt first to draw bracket down and in place on the pinch weld. Then upper 5/16 x 3/4" bolt. Make sure bracket does not pull away from rocker panel while tightening or board will not be level. Fully tighten all fasteners.

STEP TWO: Attaching board to brackets.

- 1) Place board on brackets to determine which channel on underside of board requires bolts to line up with bracket slots. Slide bolts down underside of board accordingly. It is only required to use one bolt to attach board to bracket use 2 if available. Now tilt board back and slide up under body letting the bolts fall into slots.
- 2) Push board in or out to desired location and install flange nuts to secure board. If brackets seem uneven to other brackets loosen bolt reposition bracket in correct place and retighten brackets.
- 3) Check that all fasteners are tight before stepping on boards.

