

Running Board Instructions

1076 & 1077

(14 - C) Silverado / Sierra Crew Cab

Installation Requires

Installation Instructions	1
Brackets Front (Taller Height)	4
Brackets Rear (Shorter Height)	4
Bolt Pack	2
Running Board Set	1

Necessary Tools Required

Ratchet wrench with 1/2" or 13mm socket
Safety Glasses

Bolt pack for bracket installation

8mm U-Nuts	4
8mm x 20mm Hex Bolt	8
8mm x 30mm Hex Bolt	8
5/16" Flat washer	16
8mm Serrated Flange Nut	8

Bolt pack for running board installation

5/16" x 3/4" Hex Bolt	16
5/16" x 3/4" Serrated Flange Nut	16

STEP ONE: Mount brackets to vehicle

- 1) Find the tabs that hang off the pinch weld below doors. Fig A & C Starting at the front of vehicle, hang the (2) taller brackets on the tabs with the 8mm welded nut using 8mm x 30mm bolt and washer up through factory nut Fig A. Then place bracket on top of bolt and loosely secure with 8mm nut. Now loosely secure 8mm x 20 bolt with washer into upper factory 8mm hole. Tighten fasteners snug 30mm bolt first to draw bracket down on pinch weld. Then upper 20mm bolt. Make sure bracket does not pull away from rocker panel while tightening or board will not be level.
- 2) The rear two shorter brackets will fit in the (2) tabs shown in Fig C with black plug and hole above tab. You will need to remove the black grommet and discard. Then place an 8mm U-Nut in each hole with thread on inside of rocker panel Fig D. Do this for each rear bracket and mount in place using 8mm x 30mm bolt with washer up through hole in pinch weld. Then place bracket on top and loosely secure with 8mm flange nut into pinch weld tab and 8mm x 20mm bolt into rocker panel U-Nut Fig E. Tighten fasteners snug 30mm bolt first to draw bracket down on pinch weld. Then upper 20mm bolt. Make sure bracket does not pull away from rocker panel while tightening or board will not be level. Fully tighten all fasteners.

STEP TWO: Attaching board to brackets.

- 1) Place board on brackets to determine which channel on underside of board requires bolts to line up with bracket slots. Slide bolts down underside of board accordingly. It is only required to use one bolt to attach board to bracket, use 2 if available. Now tilt board back and slide up under body letting the bolts fall into slots.
- 2) Push board in or out to desired location and install flange nuts to secure board. If brackets seem uneven loosen bolt reposition bracket in correct place and retighten brackets.
- 3) Check that all fasteners are tight before stepping on boards.

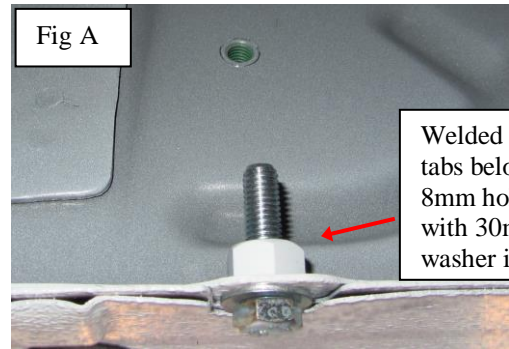


Fig A

Welded nuts on front tabs below factory 8mm hole. Shown with 30mm bolt with washer installed.

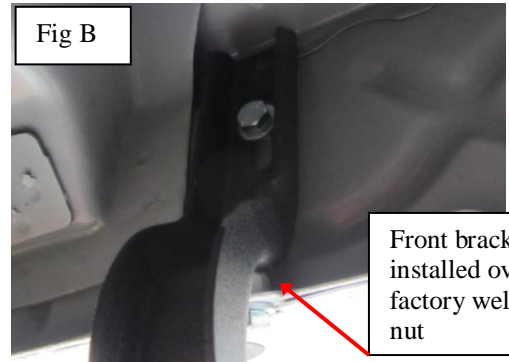


Fig B

Front bracket installed over factory welded nut

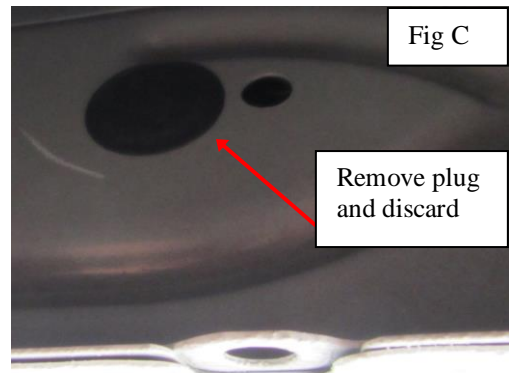


Fig C

Remove plug and discard

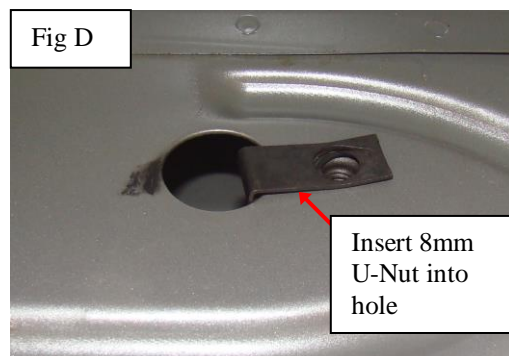


Fig D

Insert 8mm U-Nut into hole



Fig E