

Running Board Instructions

1065

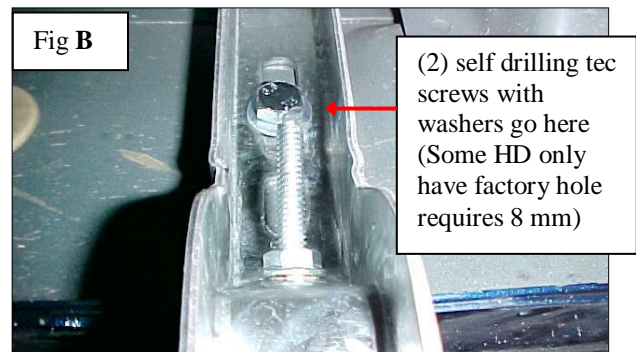
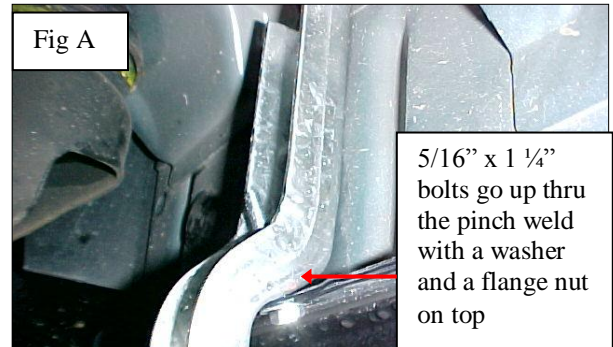
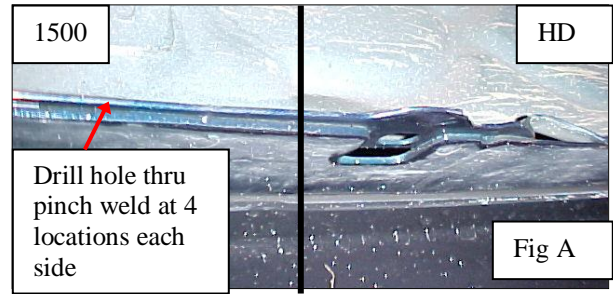
1999–2006 Silverado/Sierra Ext Cab
 2001–2006 Silverado/Sierra HD Ext Cab
 (Includes 2007 Classic Body Style)
 (Minor Drilling Required)

Installation Package	
Installation Instructions	1
Bracket	8
Bolt Pack	1
Running Board Set	1

Necessary Tools	
3/8 drill bit, 3/8 nut driver variable speed drill	
Ratchet wrench with 1/2" socket	
Combination wrench 1/2"	
Safety Glasses	

Bolt Pack Brackets	
#14 * 3/4 Self Tapping Tec Screw	16
5/16" x 1 1/4" Hex Bolt	8
8mm*20 Hex Bolt	4
5/16" Flat washer	8
5/16" Serrated Flange Nut	8
1/4" Flat Washers	16

Bolt Pack Running Boards	
5/16" x 3/4" Hex Bolt	16
5/16" x 3/4" Serrated Flange Nut	16



STEP ONE: Mount brackets to pinchweld (Fig A)

- 1) (HD only) Find the 4 tabs that hang off the pinch weld. You will hang the first two brackets on the first and third tabs using 5/16" * 1 1/4" bolt and flange nut. Loosely bolt these to the vehicle
- 2) The rear two brackets you will have to drill 3/8" through the pinch weld a 1/4" away from the lip of the pinch weld, these will mount the same way as the first two so use them for reference.
- 3) All 1500 series (non HD) you will have to drill a 3/8" hole through pinch weld a 1/4" away from the lip. Approximately 8", 28", 51", 72" starting from front wheel.
- 4) Now mount bracket in place using 5/16" * 1 1/4" bolts, washer, nut making sure upper part of bracket is flush to rocker panel. Leave these slightly loose
- 5) Do this for each one of the brackets putting them in the proper places.

STEP TWO: Install top bolt into rocker panel (Fig B)

- 1) Make sure brackets are level.
- 2) Now use (2) #14 * 3/4" self drilling tec screws with 1/4" washers in the upper slots to secure each bracket to rocker panel. Leave snug not tight.
- 3) Fully tighten 5/16" * 1 1/4" bolts on pinch weld. Then fully tighten tec screw on rocker panel.

STEP THREE: Attaching board to brackets.

- 1) Slide bolts down underside of board to line up with brackets. You will only need one bolt to hold board to bracket. Use two if slot and bracket line up. Tilt board back and slide up under body letting the rear bolts fall into slots first then the front bolts.
- 2) Push board in or out to desired location then thread flange nut and tighten, do this with all brackets.
- 3) IMPORTANT: Check that all brackets are tight before stepping on boards.