

Running Board Instructions

1048

(04 – 09) Chevy Colorado / GMC Canyon
Extended and Crew Cab
(Minor Drilling Application)

INSTALLATION PACKAGE

Running Board	2
Brackets (Front)	6
Brackets (Rear) use on crew cab only	2
Support Plates (use with front bracket only)	6
5/16 Bolt Plate	8
Bolt Pack (Brackets)	1
Bolt Pack (Boards)	1

Necessary Tools

Ratchet wrench with 1/2" & 13 mm socket
Combination wrench
5/16 Drill Bit
Variable speed drill w/ 3/8" hex head drive
Safety glasses

Bolt Pack Running Boards

5/16" x 3/4" Hex Bolt	20
5/16" x 3/4" Serrated Flange Nut	28
5/16" Washers (use on pinch weld bolts only)	14

Bolt Pack Running Boards

5/16" x 3/4" Hex Bolt	16
5/16" x 3/4" Serrated Flange Nuts	16

STEP ONE : Determine proper bracket placement Fig A, B & C

- There are (3) factory plugs on Extended cab vehicles per side and (4) factory plugs per side on Crew cab vehicles not shown. Extended cab vehicle will use 6 brackets and Crew cab vehicles will use 8 brackets. The plugs will reveal holes similar to that shown in Fig A & B on the underside of the vehicle on each side, were the brackets need to be placed. Insert 5/16" bolt plate as shown. Fig C may be more helpful to locate bolt plate holes. Loosely attach top of bracket so bolt plate will not fall in hole
- Fasten support plate as shown in Fig C, D & E with 5/16" bolt & nut hand tighten. Line up hole on pinch weld and mark holes to drill 5/16 clearance hole to mount sub plate. Rear bracket does not require sub plate on crew cab only, but does have a washer behind bracket. A single hole is required in pinch weld rear only as shown in Fig F.
- Drill marked holes. After holes are drilled, grease to stop any rust. Use 5/16*3/4 bolts, washers & serrated nuts to attach support plates to pinch weld and rear bracket to pinch weld. Loosely bolt (hand tighten) brackets as shown in Fig C for all front brackets and Fig F for rear holes if crew cab installation.
- Place board on brackets by sliding mounting bolts in slots on underside of boards and allow bolt threads to drop through bracket slots. With bracket mounted in position, slide 5/16" bolts down outside channels on underside of board so bolt stud will lined up with bracket slots & install board on brackets to see if board is level. Boards only require one bolt to mount bracket to board depending on board applications
- Check board for levelness and snug fit to vehicle. Adjust up and down or in and out and fully tighten outside brackets first, then adjust inside bracket accordingly. Fully tighten all brackets.

STEP TWO : Board Installation Check.

- IMPORTANT: Check all bolts to verify completed mounting and tightness. Installation is complete

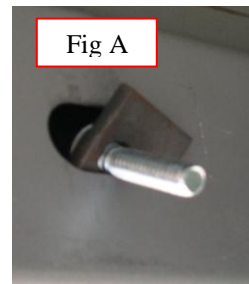


Fig A

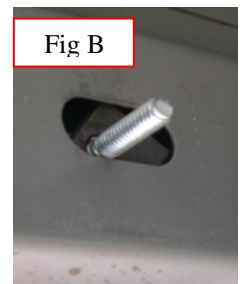


Fig B

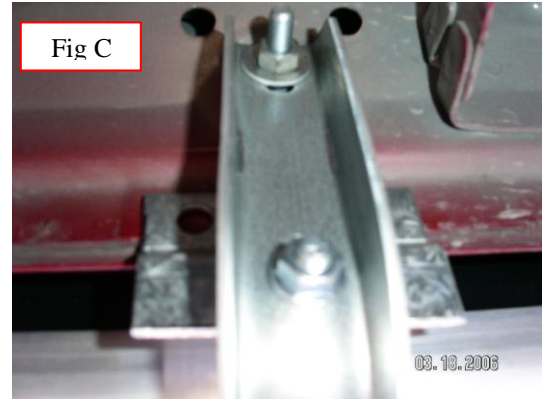


Fig C

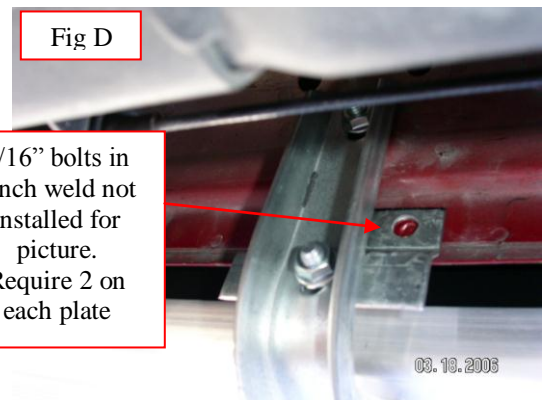


Fig D

5/16" bolts in pinch weld not installed for picture. Require 2 on each plate



Fig E

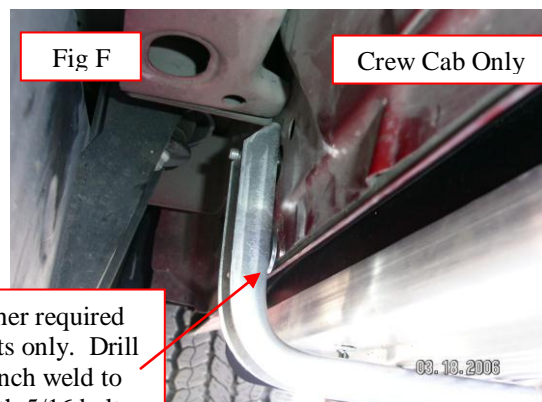


Fig F

Crew Cab Only

5/16 Washer required rear brackets only. Drill hole in pinch weld to secure with 5/16 bolt