



AUTOMOTIVE PRODUCTS,

INSTALLATION INSTRUCTIONS

STYLIZED RUNNING BOARD

APPLICATION:

2009-2015 Honda Pilot

2009-2013 Acura MDX

PART NUMBER:

28-21190, 28-21195

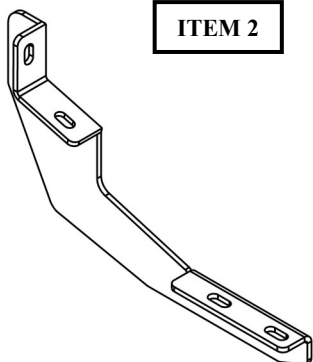
ITEM	QUANTITY	DESCRIPTION	TOOLS NEEDED
1	2	RUNNING BOARDS	13MM SOCKET
2	2	FRONT MOUNTING BRACKET	RATCHET
3	4	CENTER/REAR MOUNTING BRACKETS	TORQUE WRENCH
4	12	M8 HEX HEAD BOLTS	
5	12	LARGE M8 FLAT WASHERS	
6	12	M8 LOCK WASHERS	
7	12	M8 SQUARE HEAD BOLTS	
8	12	SMALL M8 FLAT WASHERS	
9	12	M8 NYLOCK NUTS	
10	2	M8 WIRE NUTS	

ANTI-SEIZE LUBRICANT MUST BE USED ON ALL STAINLESS STEEL FASTENERS TO PREVENT THREAD DAMAGE AND GALLING

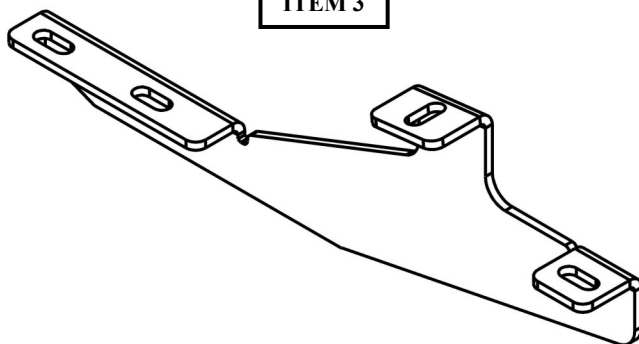
ITEM 1



ITEM 2



ITEM 3



PROCEDURE

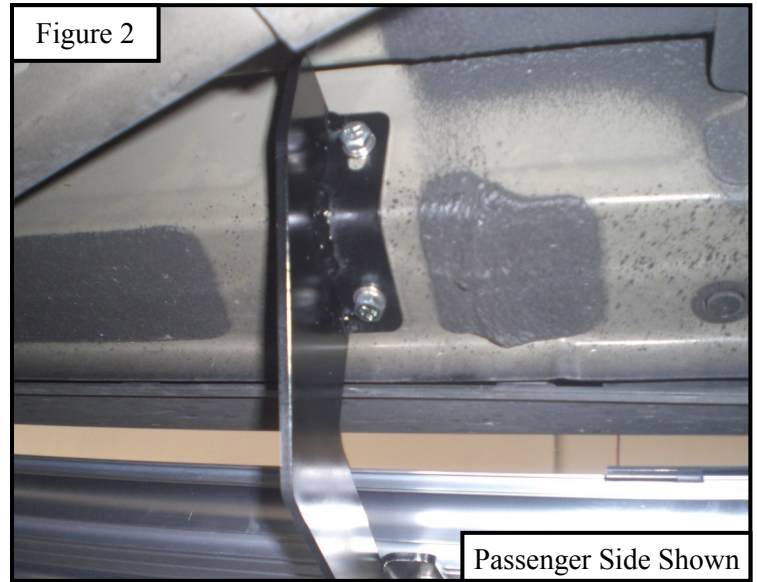
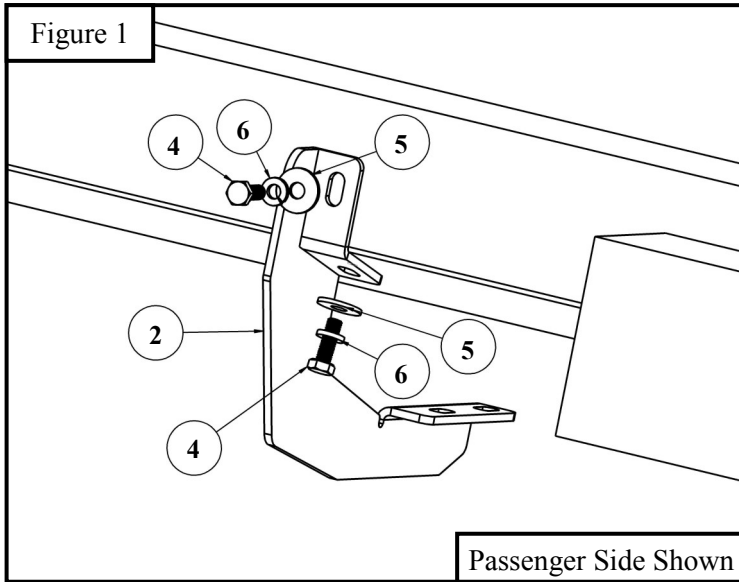
1. Remove contents from box, verify if all parts listed are present and free from damage.
Carefully read and understand all instructions before attempting installation.
Failure to identify damage before installation could lead to a rejection of any claim.



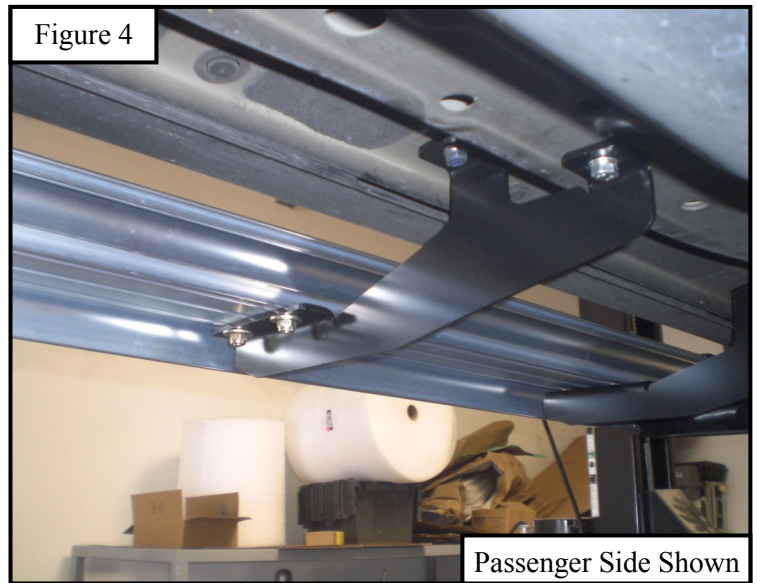
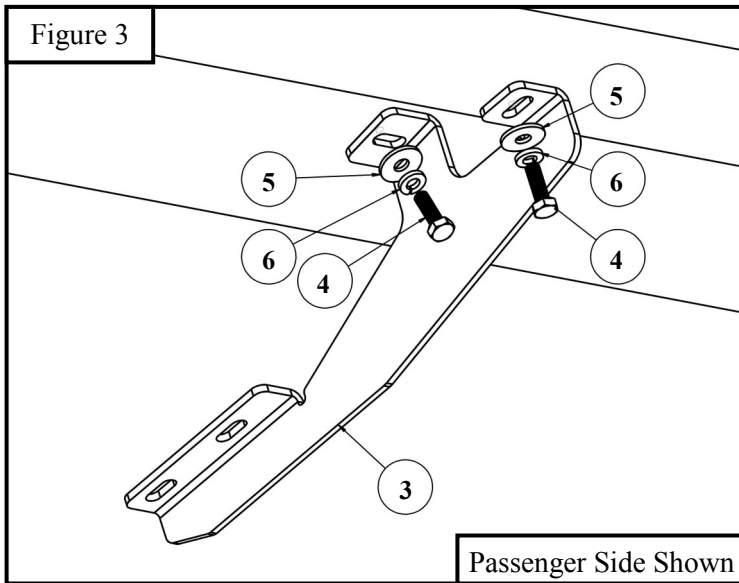
Westin Automotive Products, Inc.
320 W. Covina Blvd
San Dimas, Ca. 91773

Thank you for choosing Westin products
for additional installation assistance please call
Customer Service (800) 793-7846

2. Look for M8 threaded holes on the front passenger side. See **Figure 1 & 2**.
3. Loosely install passenger side front mounting bracket with supplied M8 hardware, repeat for driver side. See **Figure 1 & 2**.

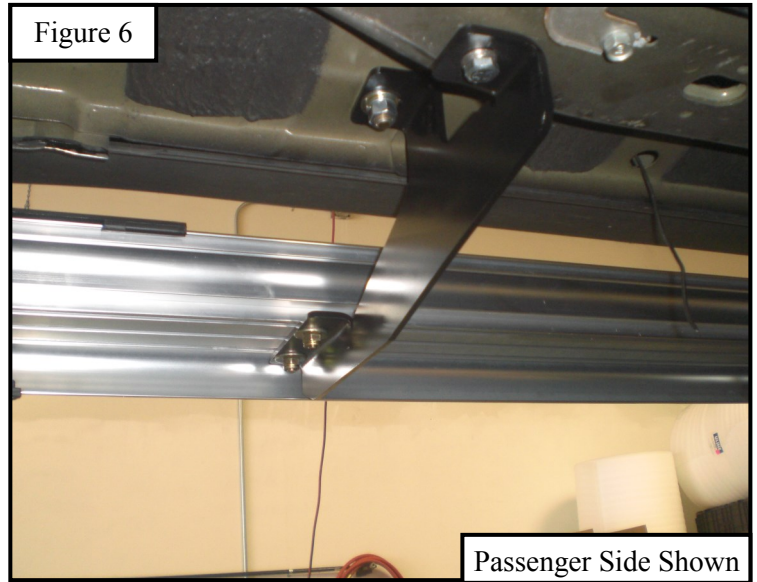
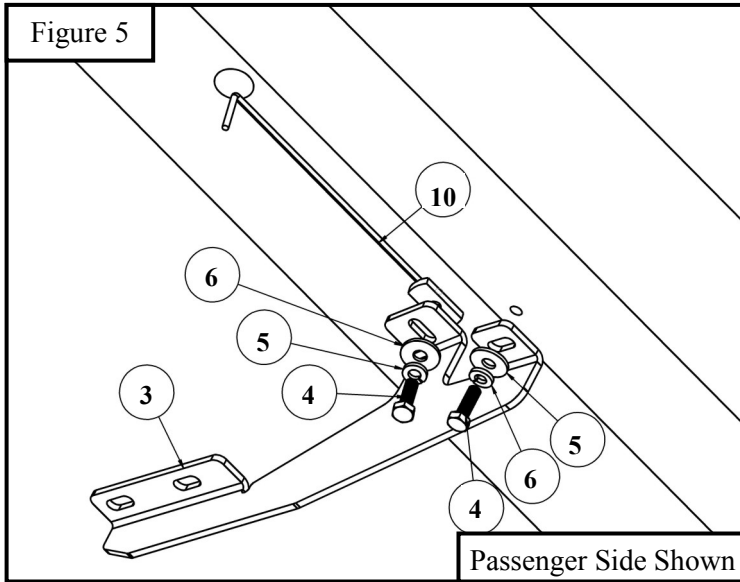


4. Look for M8 threaded holes on the rocker panel towards the center of the vehicle, as well as on the frame towards the center of the vehicle (passenger side). See **Figure 3 & 4**.
5. Loosely install passenger side center mounting bracket with supplied M8 hardware, repeat for driver side. See **Figure 3 & 4**.

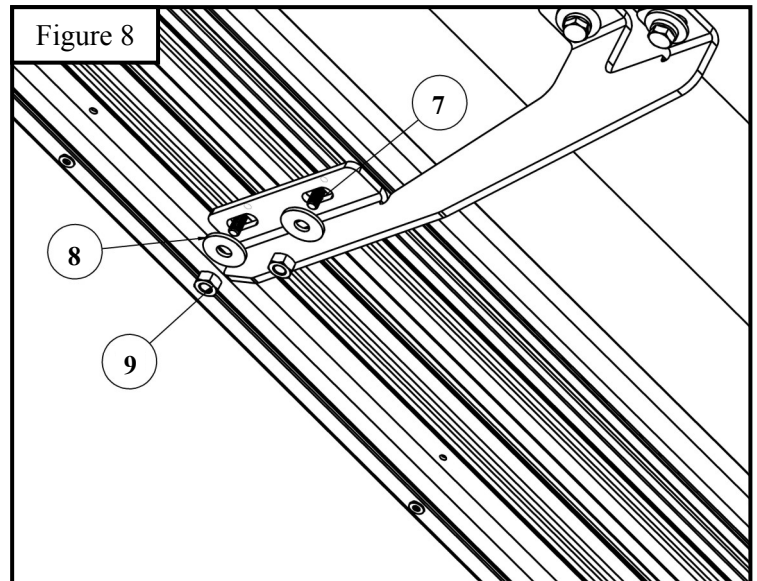
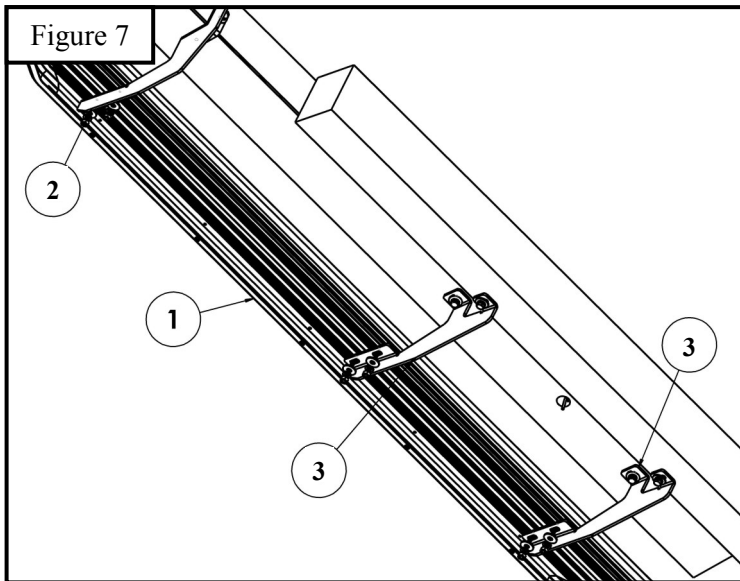


Westin Automotive Products, Inc.
320 W. Covina Blvd
San Dimas, Ca. 91773

6. Find the threaded M8 hole on the rocker panel towards the rear passenger side of the vehicle. Once found align the bracket with the hole to reference which hole the wire nut will be placed. Once position is found insert the wire nut through a large hole to the left or right of the desired position and feed it until it reaches the desired location. See **Figure 5 & 6**.
7. Loosely install passenger side rear mounting bracket with supplied M8 hardware, repeat for driver side. See **Figure 5 & 6**.



8. Once all brackets are mounted, insert supplied square head bolts into running board rails. Align bolts with slots in the mounting brackets and place board on mounting brackets. See **Figure 7 & 8**.
9. Loosely install running board to mounting brackets with supplied M8 hardware. See **Figure 7 & 8**.
10. Align and adjust as desired, then torque all M8 hardware to 15 ft - lbs.



INSTALLATION COMPLETED



Care Instructions

- REGULAR WAXING IS RECOMMENDED. DO NOT USE ANY TYPE OF POLISH OR WAX THAT MAY CONTAIN ABRASIVES.
- STAINLESS STEEL PRODUCTS CAN BE CLEANED WITH MILD SOAP AND WATER. STAINLESS STEEL POLISH SHOULD BE USED TO POLISH SMALL SCRATCHES.
- GLOSS BLACK FINISHES SHOULD BE CLEANED WITH MILD SOAP AND WATER.



Westin Automotive Products, Inc.
320 W. Covina Blvd
San Dimas, Ca. 91773

Thank you for choosing Westin products
for additional installation assistance please call
Customer Service (800) 793-7846
www.westinautomotive.com



SIGNATURE OF QUALITY

AUTOMOTIVE PRODUCTS, INC.



WARNING



Failure to follow these instructions could lead to death, personal injury, and / or property damage.

FASTENERS:

All Westin supplied fasteners must be utilized and installed in accordance with the installation instructions and apply torque to the specifications as defined. **DOUBLE CHECK ALL FASTENERS BEFORE INITIAL USE, AND PERIODICALLY IN THE FUTURE TO ENSURE PROPER FUNCTION AND SAFETY.**

DRILLING:

Most Westin products do not require drilling for installation. If drilling is defined as required, use caution when drilling a vehicle. **FAILURE TO REVIEW AN AREA TO BE DRILLED MAY RESULT IN PERSONAL INJURY AND/OR INJURY TO OTHERS AS WELL AS VEHICLE DAMAGE.**

EYE PROTECTION:

ALWAYS WEAR SAFETY GLASSES OR GOGGLES DURING THE INSTALLATION PROCESS TO AVOID PERSONAL INJURY.

MAXIMUM TOWING/CARRYING CAPACITY:

The Westin Receiver Hitches will have a visible tow rating label affixed directly on the product. User should never exceed the vehicle manufacturers maximum tow and weight rating regardless of the capacity of the hitch. **FAILURE TO FOLLOW THESE GUIDELINES WILL VOID THE WESTIN WARRANTY AND MAY RESULT IN PERSONAL INJURY AND/OR INJURY TO OTHERS AS WELL AS VEHICLE DAMAGE.**



Westin Automotive Products, Inc.
320 W. Covina Blvd
San Dimas, Ca. 91773