



SIGNATURE OF QUALITY

AUTOMOTIVE PRODUCTS, INC.

# INSTRUCTIONS—INSTRUCCIONES—CONSIGNES

APPLICATION: 2014-UP NISSAN PATHFINDER

APP PART # 28-21150, 28-21155

STYLIZED RUNNING BOARD

ITEM	QUANTITY	DESCRIPTION	TOOLS NEEDED
1	2	RUNNING BOARDS	MAGNET
2	1	FRONT MOUNT DRIVER	13MM WRENCH
3	2	CENTER & REAR MOUNT DRIVER	13MM SOCKET
4	1	CENTER CLAMP BRACKET DRIVER	16MM WRENCH
5	1	FRONT MOUNT PASSENGER	16MM SOCKET
6	2	CENTER & REAR MOUNT PASSENGER	RATCHET
7	1	CENTER CLAMP BRACKET PASSENGER	TORQUE WRENCH
8	2	REAR MOUNT CLAMP DRIVER/PASSENGER	
9	6	M8-1.25 THREADED PLATE	
10	6	M8 x 40mm FULL THREADED STUD	
11	6	M8 x 28 O.D. FLAT WASHER	
12	22	M8 LOCK WASHER	
13	22	M8 HEX NUT	
14	16	M8 x 30mm HEX BOLT	
15	12	M8 SQUARE HEAD BOLTS	
16	12	M8 x 24mm O.D. FLAT WASHER	
17	12	M8 NYLON LOCK NUT	
18	2	M10 HEX NUT	
19	2	M10 PLASTIC RETAINER	
20	2	M10 J BOLT	
21	2	M10 x 30mm O.D. FLAT WASHER	
22	2	M10 LOCK WASHER	
23	32	M8 x 16mm O.D. FLAT WASHER	

### ANTI-SEIZE LUBRICANT MUST BE USED ON ALL STAINLESS STEEL FASTENERS TO PREVENT THREAD DAMAGE AND GALLING

1. Remove contents from box, verify if all parts listed are present and free from damage. Carefully read and understand all instructions before attempting installation.
2. Locate the circular hole on the body rocker panel. Using the threaded plate (Item 9), insert through the hole. Then thread in the stud (Item 10) through the plate. (if it becomes difficult to move the threaded plate use magnet to retrieve to align to hole.

#### Bracket install:

3. Starting from either passenger or driver side of the vehicles locate near the vehicles pinch weld the circular holes and insert 1 threaded plate (item 9) into the hole. (Figure 1)
4. Using your magnet align the threaded plate so that a Threaded stud (item 10) can be inserted onto the threaded plate. (Figure 2)
5. Towards the front of the vehicle where there threaded plate was inserted, locate on the other side of the pinch weld another hole and insert (1) M10 J-bolt (item 20). Along with a plastic retainer (item 19) to hold in the J-bolt in place. Then proceed to install the front Mounting bracket (item 2 or 5). (Figure 3)



Westin Automotive Products, Inc.  
320 Covina Blvd  
San Dimas, Ca. 91773

Thank You for choosing Westin products  
For Additional installation assistance please call  
Customer service (800) 793-7846



Fig. 1

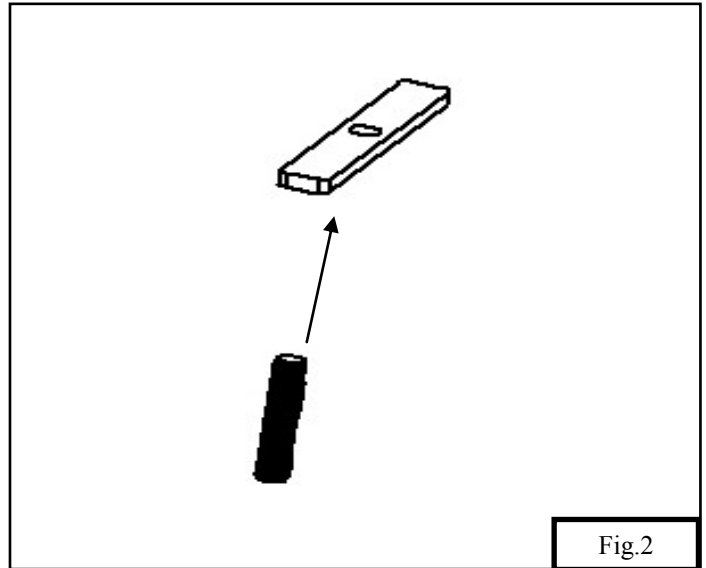


Fig.2

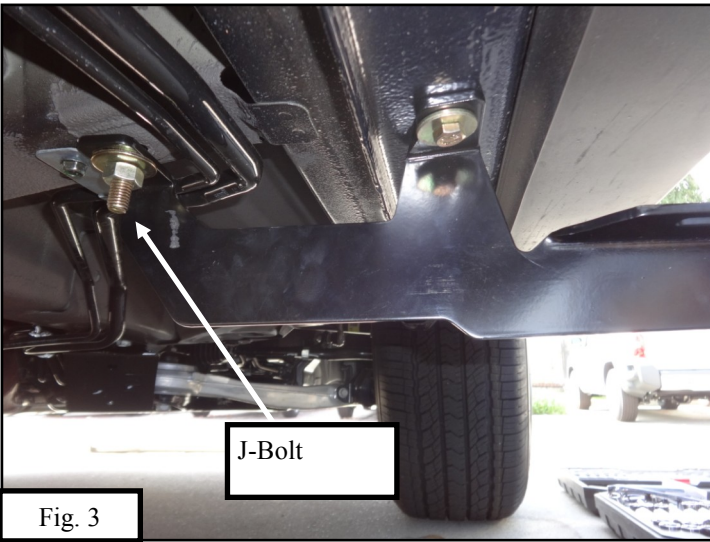


Fig. 3

J-Bolt

6. Install loosely the front bracket using (1) M8 Flat Washer (item 11), (1) M8 lock washer (item 12) and (1) M8 hex nut (item 13) to the threaded stud. For the J-bolt install using (1) M10 flat washer (item 21), (1) M10 lock washer (item 22) and (1) M10 hex nut (item 18). (Figure 4)

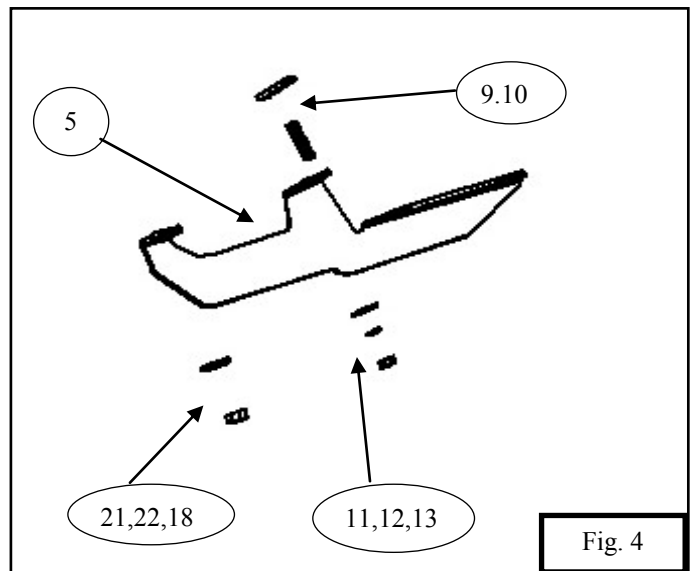


Fig. 4

7. Install loosely center and rear mounts (item 3 or 6) to the center and rear threaded stud plates using (1) M8 flat washer (item 11), (1) M8 lock washer (item 12) and (1) M8 hex nut (item 13).
8. Install loosely the clamps (item 4 or 7) to the center mounting bracket using (8) flat washer (item 23), (4) M8 lock washer (item 12), (4) M8 hex head bolts (item 14), and (4) hex nuts (item 13). (Figure 5)

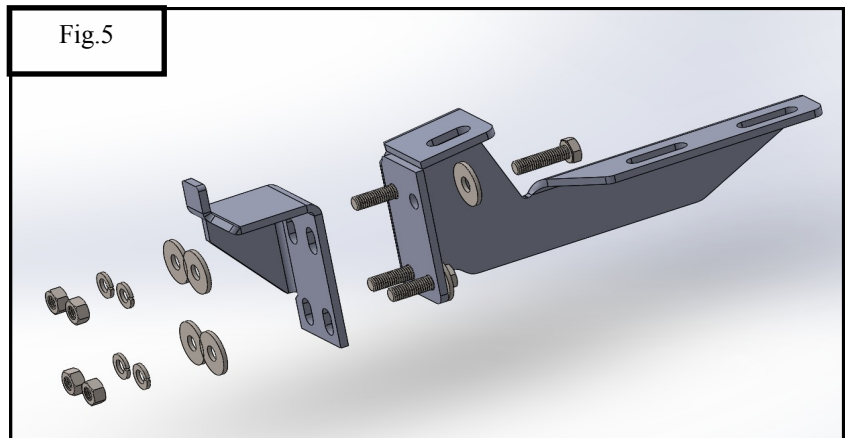


Fig.5



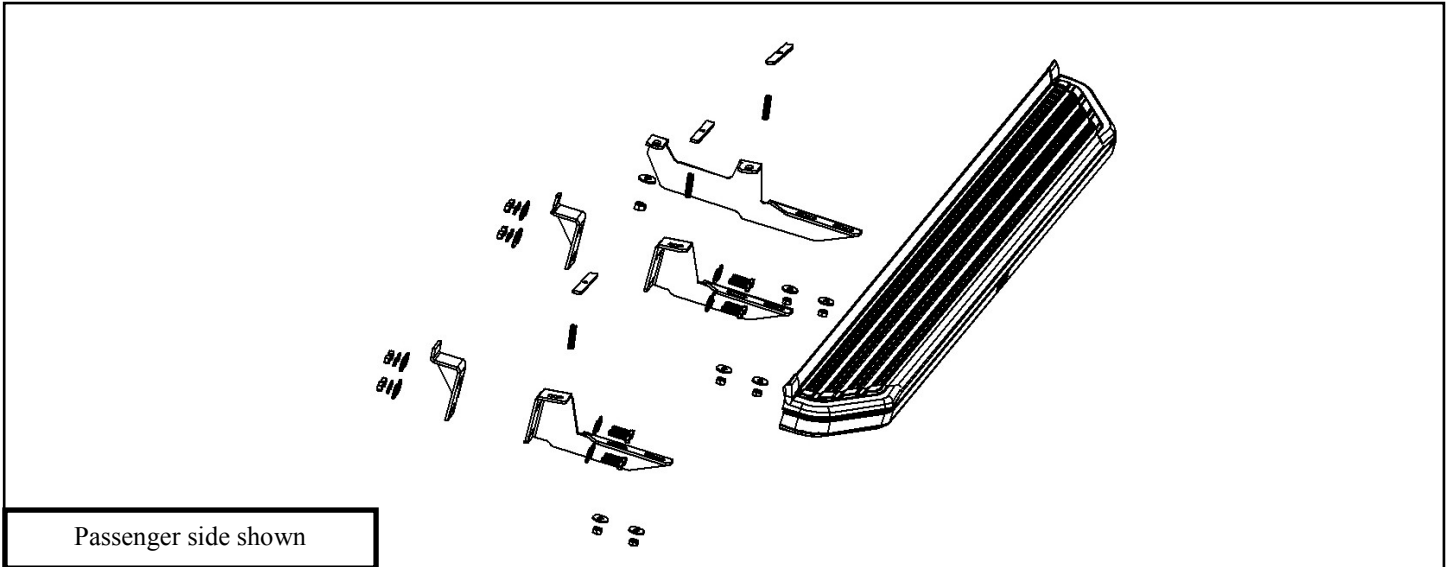
Westin Automotive Products, Inc.  
320 Covina Blvd  
San Dimas, Ca. 91773

Thank You for choosing Westin products  
For Additional installation assistance please call  
Customer service (800) 793-7846  
www.westinautomotive.com

9. Install loosely the rear clamp (item 8) to the rear mount using the same hard ware as previously mentioned on step 8 for the center clamp mount.

### Installing the stylized running boards

10. Install the (6) square head bolts (item 15) to each running board
11. Place running board on the mounts and install using (6) M8 flat washer (item 16), (6) M8 nylon lock nuts (item 17)
12. Align running boards and torque down all M8 hardware to 15-18 ft-lbs, and all M10 to 30-35 ft-lbs.



Passenger side shown



Installation Complete

#### CARE INSTRUCTIONS

- REGULAR WAXING IS RECOMMENDED. DO NOT USE ANY TYPE OF POLISH OR WAX THAT MAY CONTAIN ABRASIVES
- STAINLESS STEEL PRODUCTS CAN BE CLEANED WITH MILD SOAP AND WATER. STAINLESS STEEL POLISH SHOULD BE USED TO POLISH SMALL SCRATCHES.
- GLOSS BLACK FINISHES SHOULD BE CLEANED WITH MILD SOAP AND WATER