

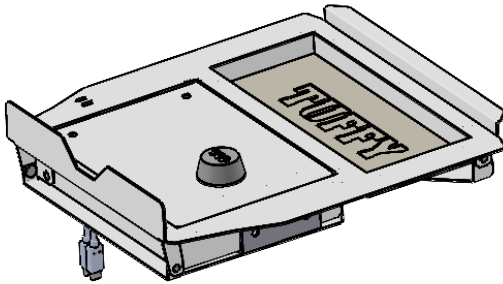


# INSTALLATION INSTRUCTIONS

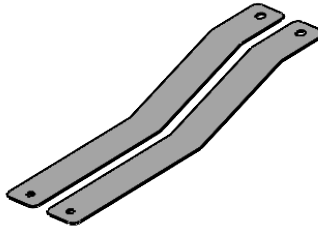
2024+ F150 Flow-Thru 12 1/4" Console Safe #415

Please read and fill out the enclosed warranty registration card or register online at <https://tuffyprompts.com/help/warranty-information/warranty-registration/> to activate your warranty.

## PARTS CHECKLIST



#415 Console Safe



#1 Front Plate



#2 (4) #10-32 x 3/16" Screw

## TOOL CHECKLIST

- Phillips Head Screwdriver

### **PLEASE READ ALL INSTRUCTIONS THOROUGHLY BEFORE STARTING INSTALLATION.**

- 1) Verify your vehicle has the 12 1/4" F150 Center Console.
  - a) If the circled features shown in Figure 1 are present you have the 12 1/4" F150 Center Console.
  - b) If they are not present, you have the 12 1/2" center console. Please give us a call at (800)348-8339.

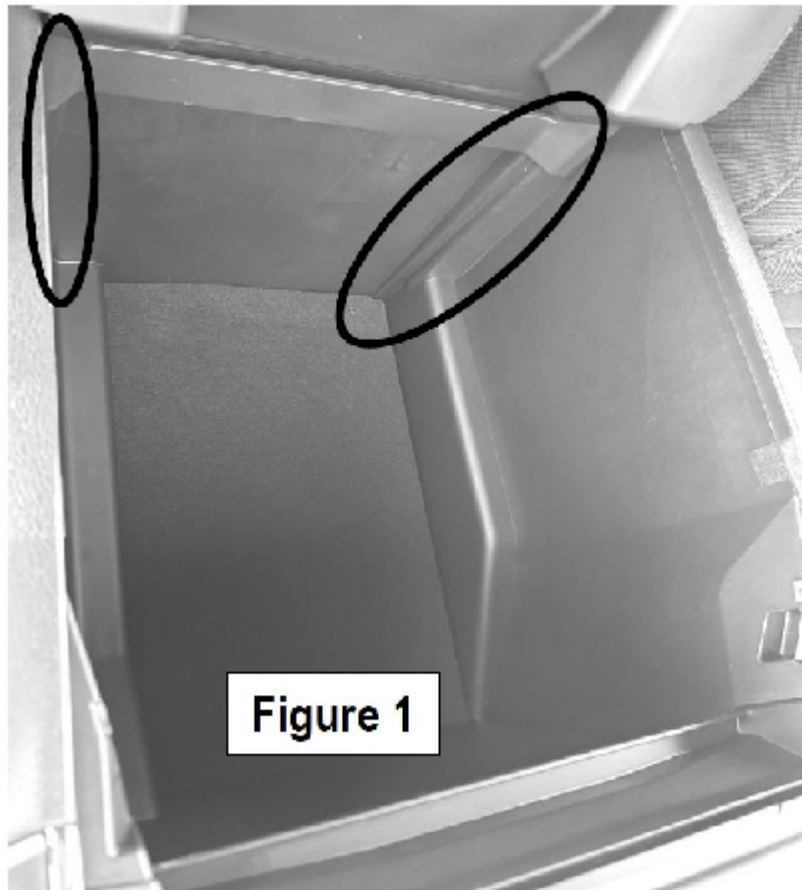
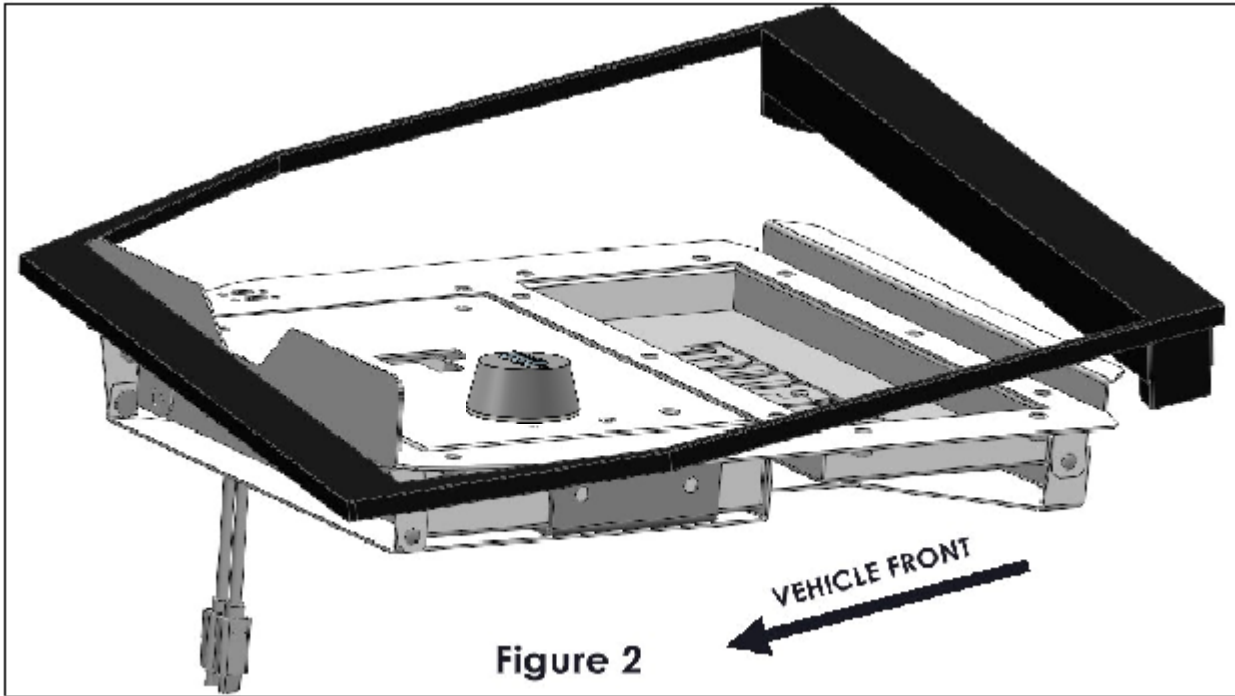


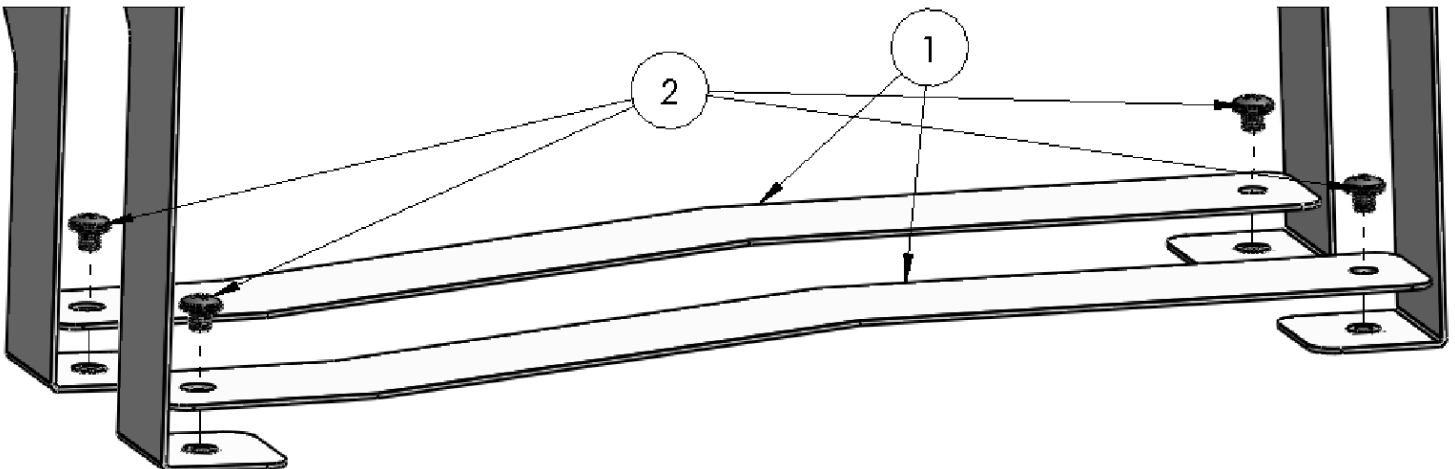
Figure 1

- 2) Remove all contents from the shipping box and confirm that you have all of the components listed above.
- 3) Open the factory console lid and remove all contents (including the pad in the bottom of the console).
- 4) With the Lid open for a better grip, place the Console Safe into the console with the back corner angled down into the console, going under the lip of the console. (**Figure 2** shows the outline of the console opening and proper orientation.)



**Note: The fit is quite tight and may require a second effort at a slightly different angle.**

- 5) Level the Console Safe and lift up into position and fold the Back Leg out followed by the Front Leg.
- 6) Insert the (2) #1 Bottom Plates into the bottom of the console and install them using (4) #2 Machine Screws (short), as shown in **Figure 3**.

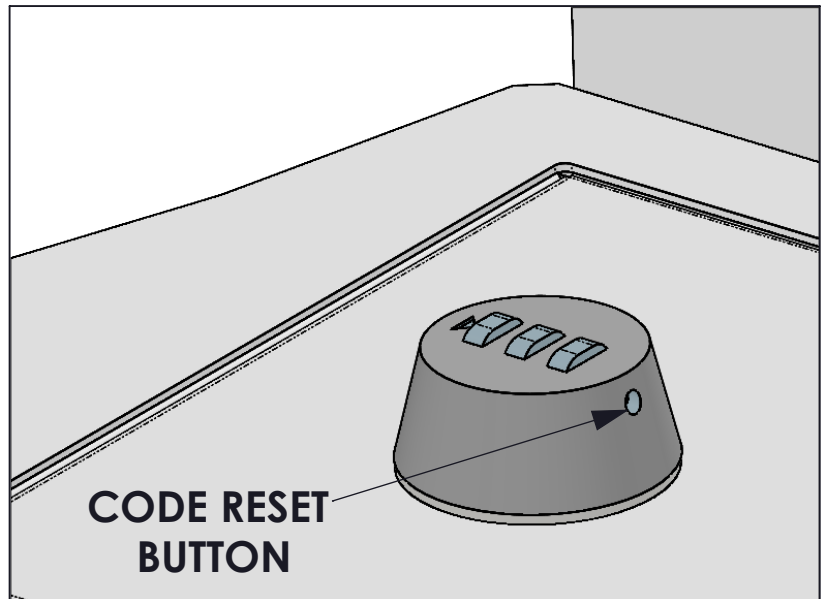


**NOTE: Due to the angle of the Console Safe legs, it is easiest to start the #2 Screws by hand and finish tightening them with a screwdriver.**

- 7) Replace contents of console, the pad removed in Step 3 will cover the bottom plates and their associated hardware. The factory coin tray may be utilized or removed depending on your preference.
- 8) You have successfully installed your Console Safe.

**Instructions for setting your personal combination:**

- A. The combination is factory set at >>0-0-0-0<<
- B. Combination must be on opening number prior to resetting.
- C. On the underside outer edge of the lock there is a hole for the code reset button. Rotate the face of cam until the code reset button comes into view.
- D. Push the code reset button in with a paper clip and keep it pushed in!
- E. Set your personal combination by turning the dials to the desired combination - starting with the dial marked '1', and moving to '2', '3', and then '4'.
- F. Release the code reset button and your combination is set.
- G. To lock, rotate lock to "locked" position. Rotate one or more dials after lock is closed.
- H. To open the lock, turn dials to your personal combination.



**NOTE:** If you desire, the Combi-Cam can be installed such that it is non-resettable.

**Directions:**

Take off the screw to the cam and remove the cam and the "stop cam"  
Rotate the cylinder 180 degrees and then put the "stop cam" and the cam back on