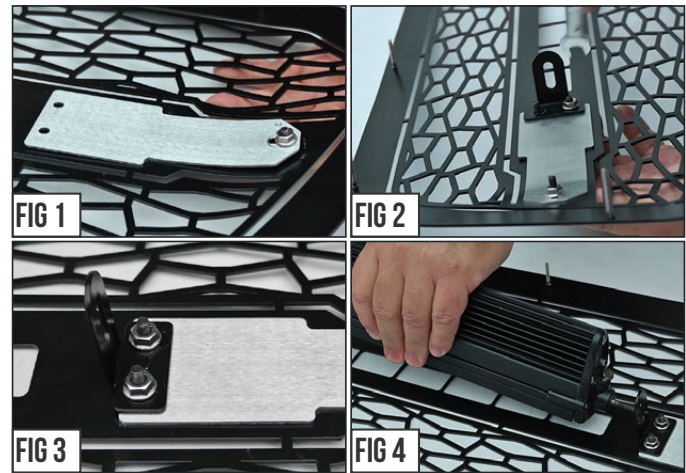


START HERE The ZROADZ Series Grilles comes into 2 different configurations. One style features the LED Light Bar mounting hidden on the backside, while the other style has exposed mounting provisions on the face side of the grille. Please note this and identify your ZROADZ Grille Series configuration and follow the instruction version that corresponds with your grille.

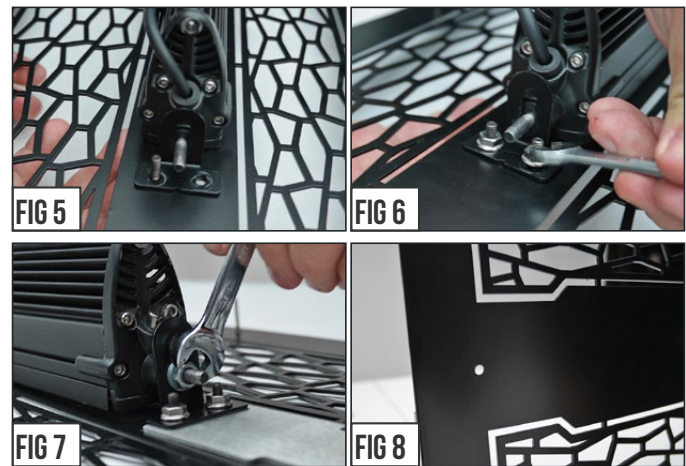
GRILLE CONFIGURATION STYLE 1



STEP 1 Lay out your parts. From the backside of the grille, put into place the ZROADZ Logo Backing Plate.

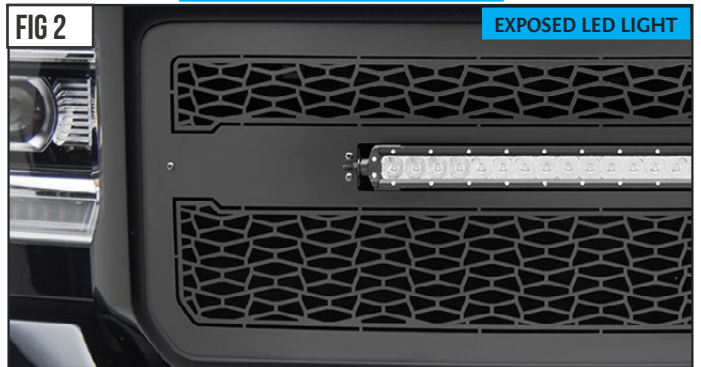


STEP 2 Put into place one of the Bracket Tabs and secure with provided Hardware as seen in Fig. # 2-4 and then from the backside of grille position LED Light Bar.

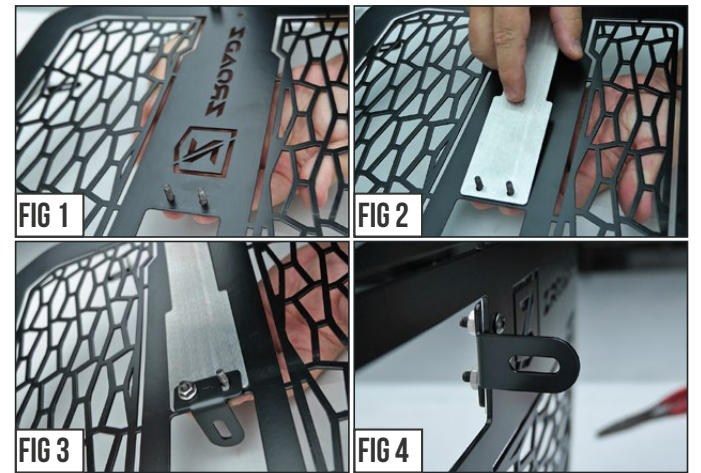


STEP 3 With LED Light placement set, put into position the remaining bracket and the finally tighten LED and all Mounting Brackets into their final secured position.

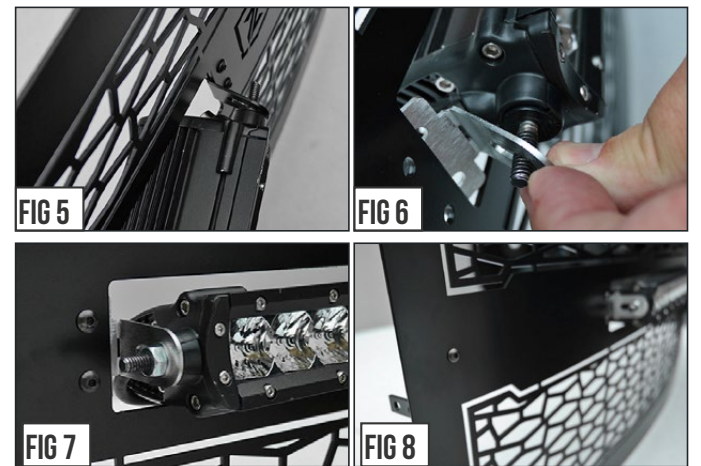
GRILLE CONFIGURATION STYLE 2



STEP 1 Lay out your parts. From the backside of the grille, put into place the ZROADZ Logo Backing Plate.



STEP 2 Put into place one of the Bracket Tabs and secure with provided Hardware as seen in Fig. # 1-4.



STEP 3 From the face side of grille slip the LED Light bar into place. On the opposite side, position the remaining bracket and finally tighten LED and Brackets into position.

STEP 4 There is a final step for both styles of ZROADZ Grilles. See both of the Figure #8 Images and note that there is an exposed hole. Use the Provided Hardware Button Head Screw and fill the hole and tightened down with Nut. This will create symmetrical look from side to side.



2014 GMC SIERRA 1500 **ZROADZ Grille**

TOOLS REQUIRED:

Socket and Ratchet Set
Flat/Phillips Screwdrivers
Torx Bits
Grinder And Grinding Wheel

PARTS LIST

(3) 2 1/2" x w/70 degree ext. flange
(2) 2" w/ 30 degree bend on both
sides. flange
(2) 2" flange bracket
(1) Grille

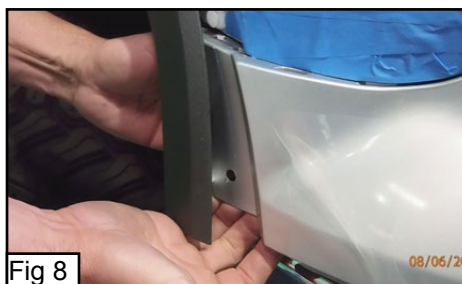
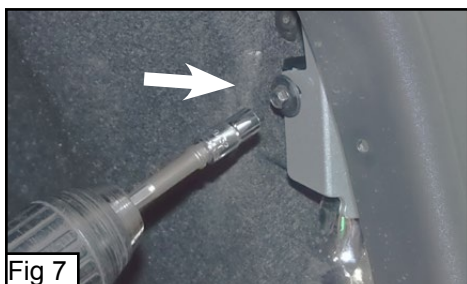
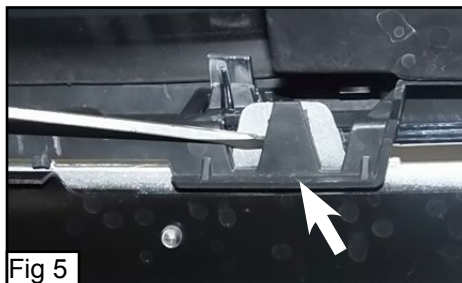
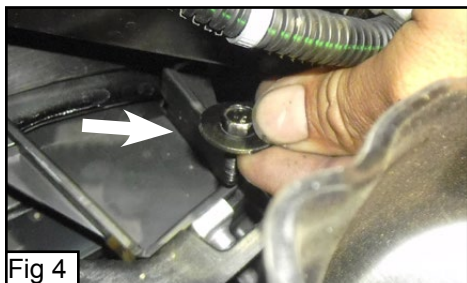


PLEASE READ AND UNDERSTAND ALL INSTRUCTIONS BEFORE INSTALLATION. Auto makers offer varied models to each vehicle and occasionally manufacture more than one body style of the same model. To assure your part is correct; our tech department can be contacted at tech@trexbillet.com to verify fitment or assist with tech questions. All other inquires can be directed to info@trexbillet.com. In the event you do not have internet access please call 1-800-287-5900.

Step 1 Factory Grille Removal

Start of by removing the twelve plastic pop clips along the top of the radiator cover using flat screw driver (Fig 1). Remove the plastic radiator cover (Fig 2). Remove the four 10mm bolts located along the top of the factory grill (Fig 3). From underneath the vehicle remove four 10mm bolts from the bottom backside of the factory grille, two are located in the middle area and two are located underneath each head lamp (Fig 4). From underneath the front of the vehicle use a flat screwdriver to un-clip 6 plastic latches, these latches hold the top plastic bumper pad to the metal lower section of the bumper (Fig 5). Now using a T15 torx bit remove two torx bolts from the top and front edges of each front fender well (Fig 6) these bolts hold the fender trim to the fender. Pull back the fender trim and remove one 7mm bolt from the front of both front fender wells (Fig 7) located just behind where you removed the forward torx bolts. Pull the sides of the plastic bumper top pad outward and pull the pad forward and carefully remove the bumper top pad (Fig 8 & 9).

Continue on page 2.



Step 1 Factory Grille Removal Continued

Remove four 10mm bolts from along the bottom of the factory grill shell (Fig 10). With a helper, pull up on the plastic plate along the top of the factory grille while pulling forward, the factory grille will pop loose along the top (Fig 11). Remove the factory grille from the vehicle. Place the factory grill on a workbench, on the backside of the factory grill remove eleven 7mm bolts holding the plastic air vent to the grill (Fig 12). Remove the plastic air vent. Now remove four 7mm bolts and unlatch sixteen plastic latches with a flat screwdriver (Fig 13). Separate the front and back halves of the factory grill (Fig 14).



Step 2 Mesh Grille Installation

Take the black plastic back section of the factory grill, you will need to cut out the center section. On the backside of the plastic use a cutting wheel and grinder to cut along the ridge around the opening highlighted white in (Fig 15 & 16). Smooth the cut edge with the grinding wheel. The cut black section should look like (Fig 17) when finished. Continued on page 3.





Step 2 Mesh Grille Installation

Take the black plastic back section of the factory grill and the grille shell and reassemble them into one section, just the same way they were before you separated them. From the backside of the assembled grille take the mesh grille and insert it into the opening you cut with the grinder (Fig 18). Take the three 2 1/2" x w/70 degree ext flange brackets from the parts bag and install them onto the three tabs along the top of the mesh grille (Fig 19) using the factory hardware to secure the brackets. Now on the bottom side of the mesh grille use the two 2" flange brackets (these are the one with a slight bend at both ends) on the two center brackets on the mesh grille. The remaining two flange brackets (the one with a bend on one side) will install onto the two outside brackets on the mesh grille and also install with the factory hardware. On the four tabs on the sides of the mesh grille use the factory hardware with no flange brackets (Fig 20). Now replace the air vent plastic back onto the back of the completed grille assembly, use the existing factory hardware to secure the plastic air vent to the grill shell assembly (Fig 21). Reinstall the bumper top pad, reinstall the completed grille assembly back onto the vehicle in the reverse order of removal. Do not forget the fender well hardware needs to be reinstalled as well. Installation complete.



Fig 20



Fig 11