

**05-08 FORD F-150**  
**04-07 LINCOLN LT**



**05-08 FORD F-150**  
**04-07 LINCOLN LT**

## **TORCH SERIES MAIN GRILLE 1PC**

### **Tools Required:**

Philips & Slotted Screwdrivers  
Die Grinder w/ Cut-off Wheel  
Files & Sandpaper  
5/16" Nut Driver / Socket Set

### **Hardware:**

1 Mesh Grille  
8 6-32 Nylon Lock-Nuts  
8 #10 Washers  
5 1/2" x 1/2" L Brackets  
3 1/2" x 1" L Brackets

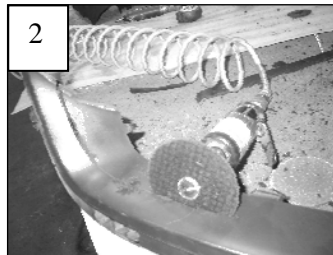
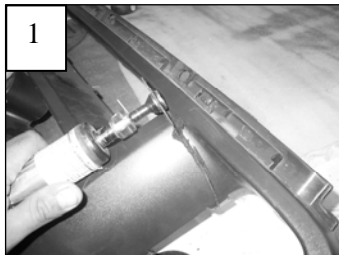
### **Read and understand instructions before attempting installation**

Remove the six retaining nuts from the rear of the grille shell. Now remove the four bolts that hold the grille shell to the hood. Remove the shell assembly from the vehicle. Apply masking tape to the chrome or painted area of the grille to prevent scratching.

The following steps cover cutting the center grille work from the opening. F-150 trucks have two styles of grilles; 2wd models have a full honeycomb center and 4wd models (except Lariat models) have a bar design with small honeycomb openings. Lincoln LT trucks have only one style. Find your model below and follow the instructions.

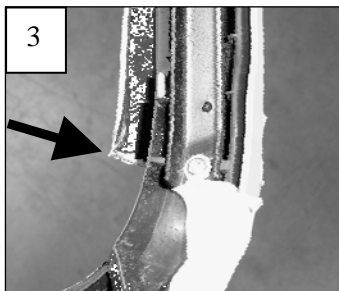
#### **04-06 F150 2wd with full honeycomb**

Use a die grinder or jigsaw to cut the honeycomb center from the grille. Make your cut about 3/4"-7/8" " back from the face of the grille. Test fit the billet over the face of the grille; the billet will rest on the on the ring just inside the chrome or painted ring. Center the grille over the shell; use the L brackets, washers and Nylon lock nuts to secure the billet. Install the three longer L brackets along the top.



#### **04-06 F150 4wd with bar design grille**

Use a die grinder or jigsaw to cut the center bars from the grille. Make your first cut at the base of each bar that connects to the outer opening of the grille (1). 2006 models will require cutting the mesh because it is molded to the bars. This will allow the center section to be removed from the grille. A second cut will now be made along the top and on each end (2). Make your

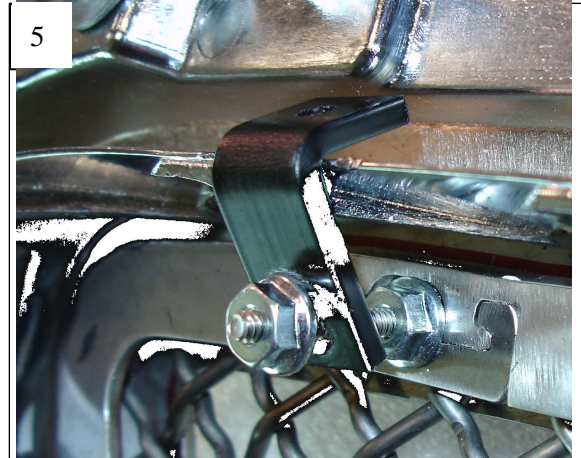


cut approximately 3/4" from the face of the grille; this will leave a lip for the 'L' brackets. **Make your cut along the bottom just behind the face of the grille; this will leave a 1/2" section of black plastic next to the chrome or painted ring.** Use the lower screw hole from the steel brackets as a reference to start the cut along the bottom (See arrow in picture 3). Test fit the billet over the face of the grille; the billet will rest on the on the ring just inside the chrome or painted ring. Center the grille over the shell; use the 'L' Brackets, washers and Nylon lock nuts to secure the billet. Install the three longer L brackets along the top.

**6315561**

**6315561**

*(Continued)*



### **05-06 Lincoln LT Truck (all)**

Make a cut at the base of the chrome vertical bars on Lincoln LT trucks (4). Remove the Lincoln logo from the factory grille if re-used. Part number 19556 (sold separately) is used to install the factory logo on the grille. Test fit the billet over the face of the grille; the billet will rest on the on the chrome ring. Center the grille over the shell; use the L brackets, washers and Nylon lock nuts to secure the billet. Install the three longer L brackets along the top (5). Two of the short L brackets will not be used.

Install the grille assembly back onto the vehicle. Remove the masking tape from the grille. ***Thank you for purchasing your T-Rex billet grille.*** T-Rex Truck Products Inc. 12/10/14

PAGE 2 OF 2

