

T-REX

GRILLES



TORCH SERIES GRILLE

MAIN GRILLE REPLACEMENT #6314541 / #6314551
2013 - 2018 DODGE RAM 1500

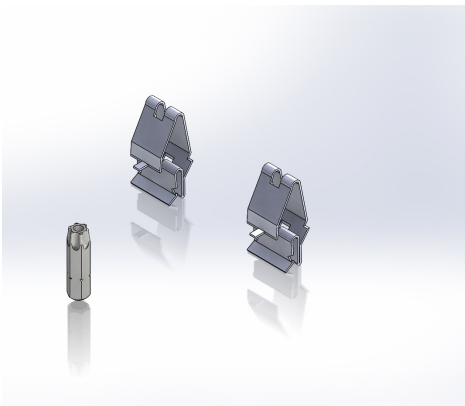
PARTS INCLUDED

(1) Torch - Main - Grille - Replacement

Part #6314541 - Black - w/ 20" Straight LED OR
Part #6314551 - Black - w/ 30" Curved LED

HARDWARE INCLUDED

(2) - Trim Panel Retainer Clips
(1) - T-40 Torx Bit



TOOLS REQUIRED

- Screwdriver set (Flat Head)
- Needle Nose Pliers
- Socket Set
- Ratchet Tool
- 1/2" Plastic Spatula

GRILLE REMOVAL & GRILLE INSTALLATION GUIDE

START HERE

PLEASE READ AND UNDERSTAND ALL INSTRUCTIONS BEFORE INSTALLATION. Auto makers offer varied models to each vehicle and occasionally manufacture more than one body style of the same model. To assure your part is correct; our tech department can be contacted at tech@trexbillet.com to verify fitment and assist with technical questions. All other inquires can be directed to info@trexbillet.com. In the event you do not have internet access please call 1-800-287-5900.

* APPLICATION MODELS VARY. WE RECOMMEND TO VERIFY FITMENT BEFORE BEGINNING INSTALLATION PROCESS.
* IMAGES FEATURED IN THE INSTRUCTION DOCUMENTS MAY NOT ALWAYS EXACTLY MATCH YOUR GRILL.

STEP 1 FRONT BUMPER REMOVAL

1) Turn off engine and chalk tires with stop block. Open Hood. Disconnect Battery.

PRO TIP:

Before you begin, use "3M Painters Tape" to apply a protective guard around the work areas. Attend to the fender and bumper valance. This will help protect the paint and finish of your vehicle.

STEP 2

This grille installs as a replacement.

2) Begin by removing the rubber dust cover Radiator Shroud.



TORCH SERIES GRILLE

MAIN GRILLE REPLACEMENT #6314541 / #6314551

2013 - 2018 DODGE RAM 1500

GRILLE REMOVAL - CONTINUED



FIG 3



FIG 4

STEP 3

SEE FIGURES 3 - 6

3) With the Dust Cover Radiator Shroud removed and set aside, begin removing the bolts that hold the grille assembly structure in place.

There should be half a dozen bolts or so located along the top where the dust cover shroud was removed.

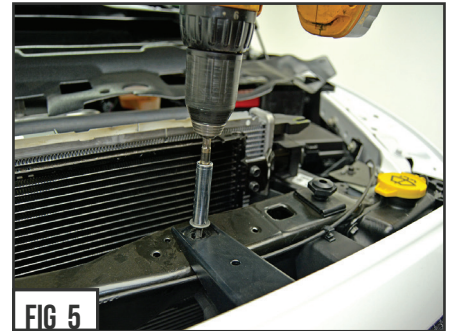


FIG 5



FIG 6

STEP 4

SEE FIGURES 7 - 9

4) Using both hands, grab the very bottom corners of each side and firmly pull on both sides. This action will pull loose the clips at bottom of grill and release the grille from the grille mounts. The Grille should now be free to pull away from truck.



FIG 7

STEP 5

SEE FIGURE 10

5) Set the OEM Factory Grille Assembly aside. This component will no longer be used.



FIG 8



FIG 9



FIG 10

TORCH SERIES GRILLE

MAIN GRILLE REPLACEMENT #6314541 / #6314551

2013 - 2018 DODGE RAM 1500

GRILLE INSTALLATION - START

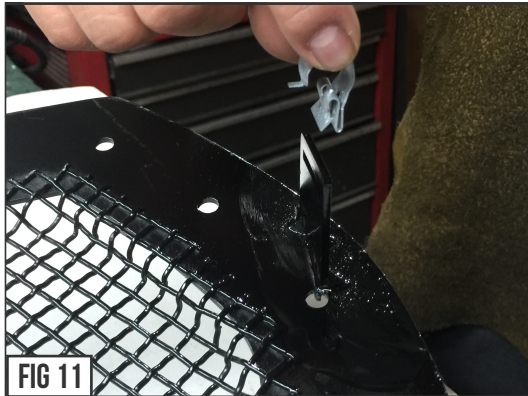


FIG 11

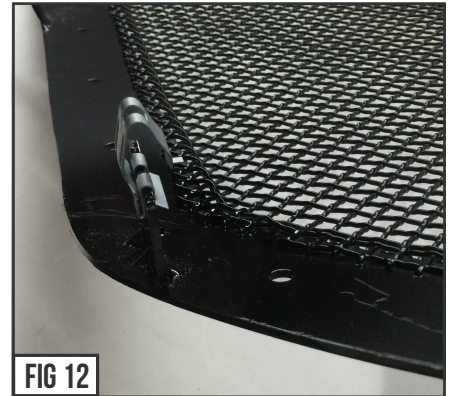


FIG 12

STEP 6

SEE FIGURES 11 & 12

6) It is now time to prepare the new T-REX Replacement Grille for installation. Using the provided mounting hardware, place the retainer clips over the Grille's pre-determined mounting tabs located in the lower corner. →

STEP 7

SEE FIGURE 12

7) Press firmly so they grab and latch. Repeat this step so that each Retainer Clip is fixed and mounted to each of the Grille's Mounting Tabs.



FIG 13

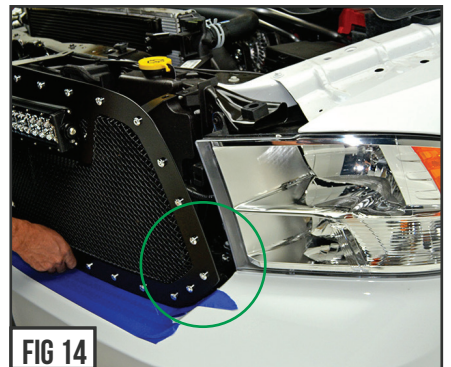


FIG 14

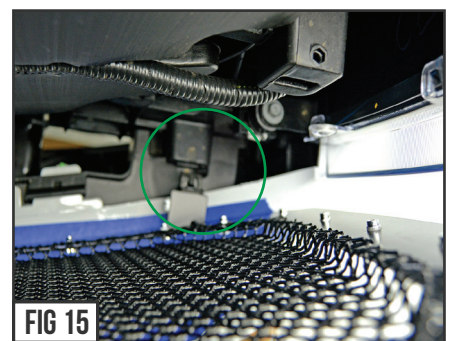


FIG 15

STEP 8

SEE FIGURES 13 - 16

8) It is now time to put into place the new T-Rex Grille. Start by aligning the lower edge of the T-REX Grille with the Vehicle's grille opening.

In Figure #14 & #15 the T-Rex Grille's Lower Mount is aligned with the Retainer Clips female receiver (located on the vehicle) and then in Figure #16 a firm palm is pressed to the grille face and pushed in so that the clip and tab is mated.

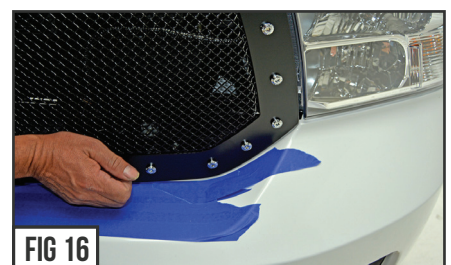


FIG 16

STEP 9

SEE FIGURES 17

9) The T-Rex Grille also features pre-determined top mounts. Make sure these are put into place and hung properly.



FIG 17

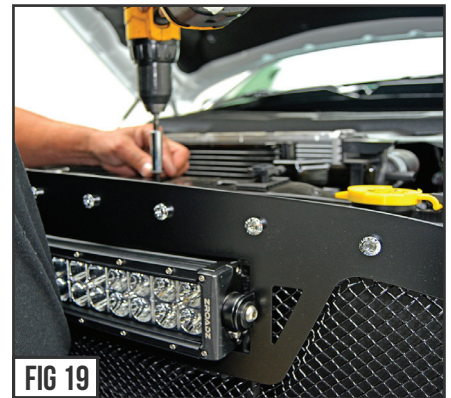
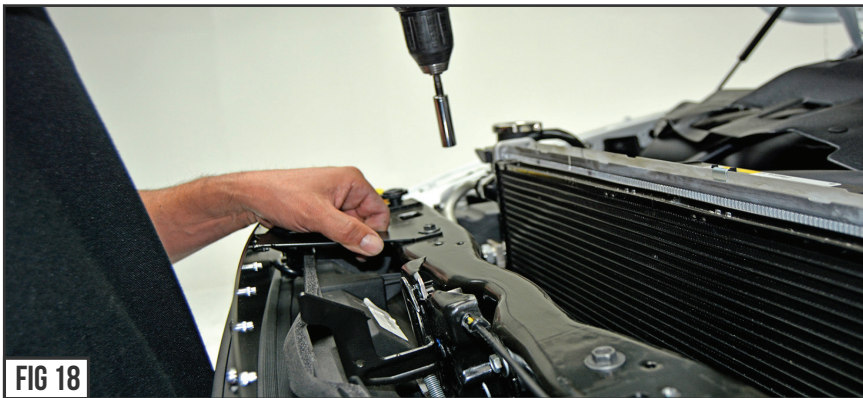
GRILLE SHELL DISASSEMBLY CONTINUED

TORCH SERIES GRILLE

GRILLE INSTALLATION- CONTINUED

MAIN GRILLE REPLACEMENT #6314541 / #6314551

2013 - 2018 DODGE RAM 1500



STEP 10

SEE FIGURES 18 & 19

10) With the T-Rex Grille sitting in its correct position, use the OEM bolts that were removed in Step #3 and secure the Grille in place. Leave them loose for now.

STEP 11

SEE FIGURE 19

11) Align the t-rex grille so that it sits evenly with equal gaps on all sides.



STEP 12

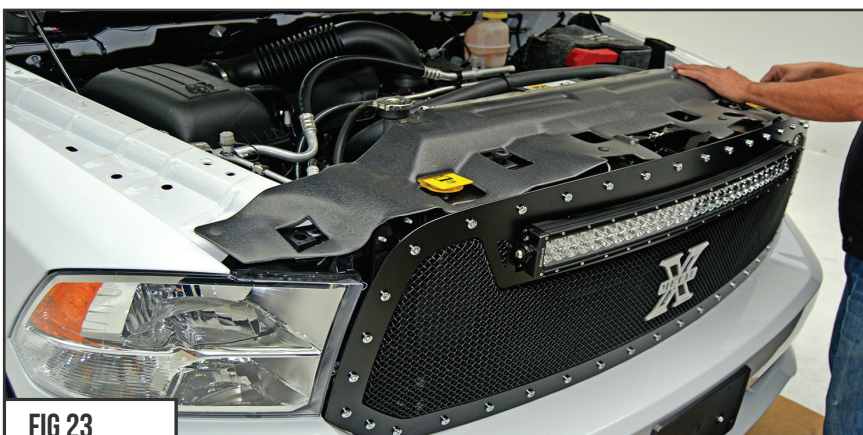
SEE FIGURES 20 - 21

12) Carefully close the hood so it latches completely and locks closed. Inspect for proper Grille alignment.

STEP 13

SEE FIGURES 22 - 23

13) With everything aligned and mounted to your satisfaction, run the bolts down tight so that it is firmly mounted and locked into position.



SECURE HARDWARE

STEP 14

SEE FIGURE 21 - 23

14) Put back into place the Dust Cover Radiator Shroud and re-install the plastic push tabs.

GRILLE INSTALLATION - COMPLETE

TORCH SERIES GRILLE

INSPECT YOUR WORK

MAIN GRILLE REPLACEMENT #6314541 / #6314551

2013 - 2018 DODGE RAM 1500



FIG 24



FIG 25

STEP 28

28) Check over your work for hardware tightness and visual inspection.

STEP 29

SEE FIGURES 24 - 26

29) At this point you want to look over your work and examine the gap alignments around all edges and in between the new T-REX Grille and the vehicle components and body lines. Carefully close the hood for a complete visual inspection. If adjustment is needed, you can remove grille and loosen the hardware mounts and shift side to side or up & down to achieve proper look.

GRILLE INSTALL - COMPLETE



FIG 26



T-REX GRILLES PRODUCT WARRANTY

T-REX GRILLES PRODUCT WARRANTY

T-REX Truck Products warrants its grille products to be free from defects in material and workmanship for the lifetime of the grille. T-REX Truck Products warrants the finish of its grille products for a 3 year period beginning at the time of sale to the end user. These warranties are limited warranties and do not cover abuse, modification or improper installation nor do they cover finish failure caused by caustic cleaning agents, road salts or other chemicals. T-REX Truck Products reserves the right to repair or replace a defective product at its sole discretion. Any T-REX product must be returned to T-REX for warranty consideration and must be returned at the customer's expense. In the event that the product is deemed to be defective, the repaired or replaced item will be returned via a surface shipping method to the customer at T-REX Truck Products expense. No provision is made for any labor, rental car or other costs incurred by the failure of its products.

LED LIGHTING EQUIPMENT INSTALLATION / DISCLAIMER

WARNING

PLEASE CONSULT YOUR LOCAL AUTOMOTIVE ELECTRICAL PROFESSIONAL FOR INSTALLATION SERVICES AND ADVICE. T-REX IS ONLY EQUIPPED TO PROVIDE BASIC TECHNICAL ASSISTANCE DUE TO THE DIVERSITY OF VEHICLES, VEHICLE OPTIONS & MODIFICATIONS AND LIGHTING CONFIGURATION OPTIONS AVAILABLE. T-REX Truck Products cannot be held liable due to improper component installation and / or faulty wiring.

GENERAL GUIDELINES

LED Lights & LED Light Bars operate at relatively high currents and should only be installed by qualified personnel with experience in switched / relayed high draw DC Circuits.

- Light Bars are designed for use only with standard 12v DC power systems
- Light Bars are for OFF-ROAD USE ONLY. Check your local laws & regulations regarding vehicle mounted lights.
- Some Light Bars are equipped with waterproof connectors while others are simply pig-tailed
- Red Wires = POSITIVE | Black Wires = NEGATIVE
- ALWAYS install your lights on a fused circuit. Basic fusing guidelines: maximum 5A for every 10" of LED Light Bar.

GENERAL USE, INSTALL AND ADJUSTMENT TIPS

NOTE 1: T-REX Torch Series Grilles (with LED Light Bars installed), and LED Light Bars themselves are for OFF-ROAD USE ONLY.

NOTE 2: Light Bars in Torch Series Grilles are installed flush with the grille from the factory. This may or may not be the ideal angle for each light depending on the configuration of your vehicle and its options and/or modifications. To adjust the angle of your light bars simply loosen the mounting hardware on either side of each Light Bar, rotate the Light Bar to adjust the angle, then tighten the hardware once the desired angle is achieved (please be careful not to over-tighten the mounting hardware or scratch the protective powder-coat finish). It is best to adjust the angle with the vehicle on level ground with the lights facing a wall, garage door or other solid barrier at a distance of approximately 25-30 feet.

NOTE 3: Please consult a qualified automotive electrical professional for light bar wiring installation.

NOTE 4: An optional universal wiring harness (part# 639HAR1) is also available that includes high-heat & oil/fuel resistant wires, waterproof connector, 12v relay, 12v rocker switch, inline fuse holder. Our universal wiring harness significantly expedites the installation process but is not a vehicles specific "Plug & Play" product and does not eliminate the need for a professional installation.

Please contact your local T-REX dealer for more information or visit www.trexbilliet.com.

GRILLE CARE INFORMATION

GRILLE CARE INFORMATION

T-REX grilles are finest in the industry but do require normal care. Wash regularly as you would when caring for your vehicles. Never use dish soap.

POLISHED FINISH

T-REX polished grilles should be waxed at the same time that you wax the vehicle and can be cleaned with soap and water. A polished finish can be cared for in the same fashion that would care for your vehicles factory chrome. Never leave wet water spots as that may leave a blemish.

MATTE BLACK FINISH

Paint warranty applies to defects in material and / or workmanship, it does not cover the matte finish surface appearance.

To enjoy the matte appearance for many years to come, please follow these owner care and maintenance tips.

Get a no-shine matte car wash soap that uses no fillers, no silicone, and won't strip your matte paint of its layer of protection.

Do not use wax, detail spray, armorall®, or any products made for normal paint. Use only products specifically developed for matte finish paint. Do not use products that are even mildly abrasive, such as polishes, glazes, or rubbing compounds. Do not use mechanical cleaners or polishers. Do not use terrycloth, cloth, or paper towels. Do not rub the finish vigorously, this will burnish the paint finish, causing a permanent shiny spot. Shiny spots cannot be removed.

Do not use commercial car wash facilities or their shine enhancement products. Most car wash brushes, large mechanized "towels," and shine enhancement products can damage matte paint.

Remove foreign substances such as insect remains, tar, and road debris using a soft applicator and a mild solvent; saturate and soak area before cleaning—rub lightly.

Hand-wash with a soft wash mitt and mild cleaning product safe for matte paint. Use microfiber cleaning cloths with alcohol-based window cleaner for basic surface clean-up.

GLOSS BLACK FINISH

T-REX Grilles with Gloss Black Powder Coated Finish may be washed regularly as you would when caring for your vehicles finish using soap and water. T-REX grilles should be waxed at the same time that you wax the vehicle. As a general rule, anything you use to clean your vehicles painted surfaces can be used to clean and maintain your T-REX grille. A Gloss powder Coated Finish can be cared for in the same fashion that you would care for your vehicles factory paint job. Never leave wet water spots as that may leave a blemish.