

# 55474

**05-10 DODGE  
CHARGER (ALL)**



# 55474

**05-10 DODGE  
CHARGER (ALL)**

## **UPPER CLASS SERIES BUMPER**

### **Tools Required:**

Slotted Screwdriver  
Phillips Screwdriver  
Small Hammer and 1/16" Punch  
7MM & 10MM Sockets  
Liquid Thread Lock (Optional)  
Drill & 3/16" Drill Bit

### **Hardware:**

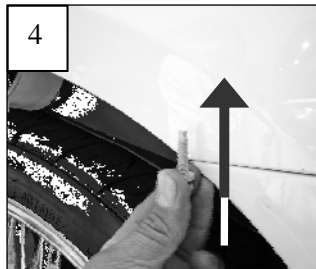
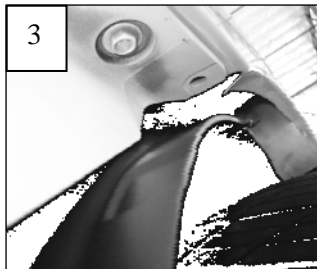
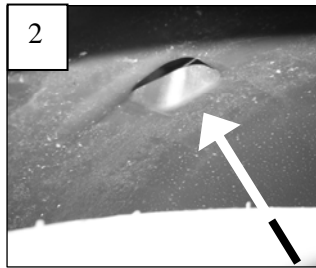
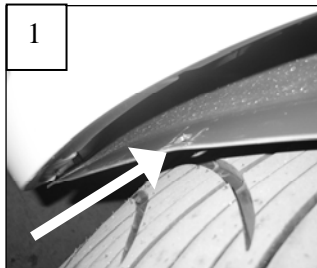
1 Bumper Insert, (Upper Class Series)  
4 #10 Flat Washers  
4 6/32" Nylon Lock-Nuts  
6 Plastic Body Retainers  
2 1/2" x 1/2" L Bracket  
1 4" Flat Bracket

## **Read and understand instructions before attempting installation**

### **Step 1**

It will be necessary to remove the bumper cover to install the bumper grille.

Open the hood. Use a screwdriver to remove the eight push in fasteners along the top of the bumper cover. Next, remove the two-piece plastic cover assembly behind the four fasteners. Each cover has metal press-in clips securing them in place. Pull up on the covers to remove them. Remove the ten 7mm bolts that hold the engine splash shield to the bumper cover along the bottom.



### **Step 2**

Remove the three plastic rivets securing the bumper cover to splash shields just below the fender line in each wheel well; 6 total (1). Use a small hammer and punch to remove the center from each plastic rivet. These rivets will be replaced with new hardware.

Now remove the single remaining plastic fastener in each wheel well. This is a re-usable fastener located in a recessed hole (2).

Each end of the bumper cover is secured to the fenders with a 10mm bolt. Pull the wheel well splash shields back and remove the vertical bolt in each corner (3 & 4).

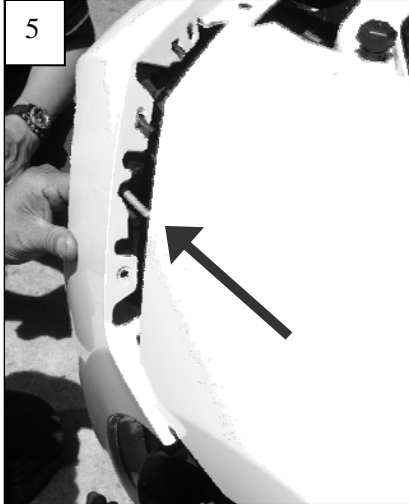
55474

55474

(Continued)

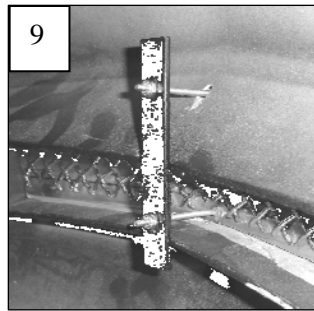
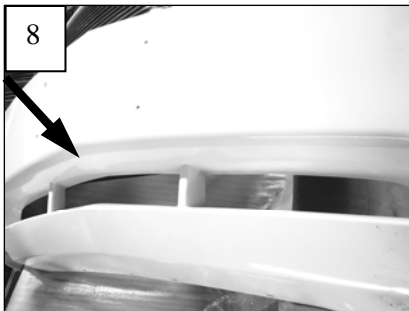
### Step 3

Behind each signal light is a 10mm nut attached to a stud (5). Access this nut from the wheel well with an extension and socket. The last retaining bolt is in the top corner of each fender. This bolt is shown next to the outer push in fastener (6 & 7).



Once these are removed, gently pull the bumper cover forward until the signal lights pop out. Disconnect the signal light wiring. Continue removing the bumper cover and disconnect the wiring to the driving lights.

The grille has one stud welded to the back; a hole must be drilled to accommodate this mounting stud. Picture (8) has an arrow pointing to the point where a hole must be drilled. Center the grille over the opening to see where the hole needs to mark the hole. Drill a 3/16" hole just below the top of the opening (8). Test fit the billet.



### Step 4

Center the grille into the opening; Install the flat bracket over the center studs; secure the studs with washers and Flange Nuts (9). Secure the L brackets on the outer mounting studs with the remaining washers and nuts.

### Step 5

Connect the wiring to driving lights. Re-install the assembled bumper cover assembly back onto the vehicle. The signal light wires must be in the bumper cover light holes. Carefully align the fenders to bumper cover studs. Gently push the bumper cover in place. Secure the assembly with the factory hardware. Replace the three rivets from each wheel well splash shield with the plastic push-in retainers supplied in the hardware pack. Re-install the signal lights. *Thank you for purchasing your T-Rex billet grille.* 5/24/06