

52442

55442

11-13 DODGE CHARGER



52442

55442

11-13 DODGE CHARGER

11-13 DODGE CHARGER

Upper Class Mesh Bumper

TOOLS REQUIRED:

- Flathead Screwdriver
- Plastic Prybar
- Socket & Ratchet Set

PARTS LIST:

- (1) Mesh Bumper
- (4) 6/32 Nylon Lock Nuts
- (4) Fender Flatwashers

PLEASE READ AND UNDERSTAND ALL INSTRUCTIONS BEFORE ATTEMPTING INSTALLATION.

Step 1 Factory Grille Removal

Remove 2 Plastic Covers above the Factory Grille Shell. (Fig. 1)

Remove 4 Clips along the Factory Grille Shell. (Fig. 2)

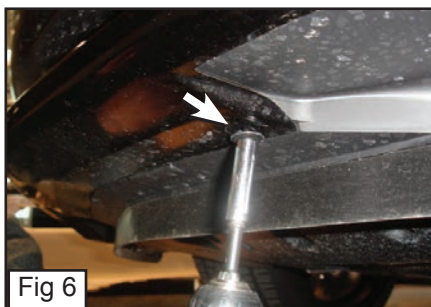
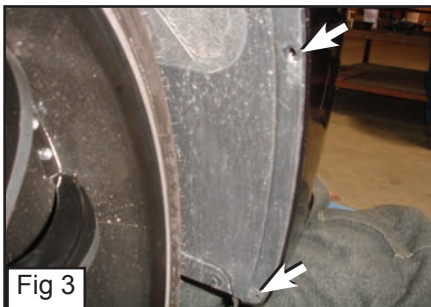
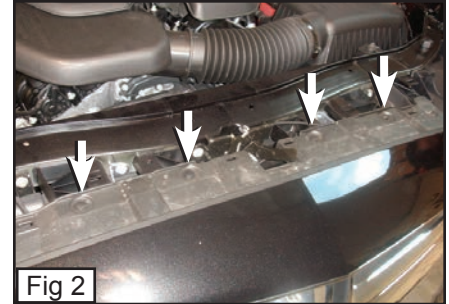
Remove 2 Clips along the Fender. (Fig. 3)

Use a Plastic Prybar to separate the Fender Cover from Bumper Shell and remove (1) 10mm Bolt. (Fig. 4)

On each end, Clips secure the side bumper, Carefully pull the side bumper outward to release clips. (Fig. 5)

Remove 6 Bolts along the bottom of the Bumper Shell. (Fig. 6)

Remove factory grille and bumper (grille and bumper are connected together) (Fig. 7)



Continue on Page 2

52442

55442

**11-13 DODGE
CHARGER**



52442

55442

**11-13 DODGE
CHARGER**

11-13 DODGE CHARGER

Upper Class Mesh Bumper

Step 3 Mesh Bumper Installation

Place the Bumper Mesh Grille over the Factory Bumper Grille. (Fig. 8)

Place a Fender Flatwasher on the threaded screw on the Mesh Bumper and thread with a 6/32 Nylon Lock Nut. (Fig. 9)

Repeat for remaining screws.

Re-Assemble Grille Shell, Bolts and Clips back in.

Installation Complete

