



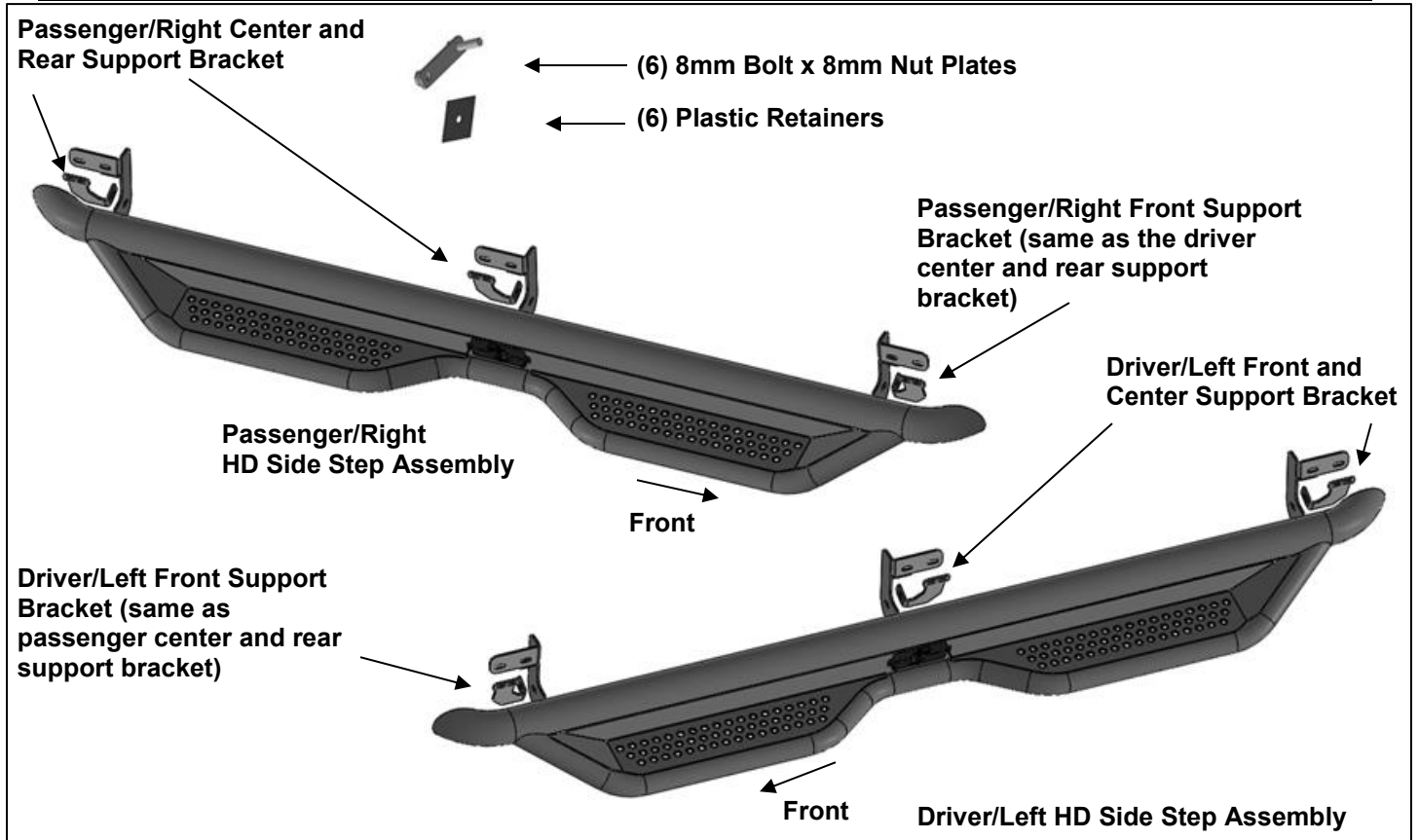
INSTALLATION INSTRUCTIONS

HD SIDE STEP

09-17 DODGE RAM 1500-3500 CREW CAB

PARTS LIST:

1	Driver/Left HD Side Step	24	8mm x 24mm x 2mm Flat Washers
1	Passenger/Right HD Side Step	12	8mm Lock Washers
3	Support Brackets (DS Front & PS Center/Rear)	6	8mm Hex Nuts
3	Support Brackets (PS Front & DS Center/Rear)	6	8mm Nylon Lock Nuts
6	8mm Nut/Bolt Plates	12	6mm x 25mm Hex Bolts
6	8mm Plastic Retainers	24	6mm x 22mm x 2mm Flat Washers
18	8mm-1.25 x 30 Hex Bolts	12	6mm Nylon Lock Nuts



PROCEDURE:

1. REMOVE CONTENTS FROM BOX. VERIFY ALL PARTS ARE PRESENT. READ INSTRUCTIONS CAREFULLY BEFORE STARTING INSTALLATION. DRILLING MAY BE REQUIRED.
2. Starting at the driver/left side of the vehicle, remove the sealing tape covering the factory holes in the side of the inner panel, (Figure 1). If necessary, line up the driver/left Side Armor with the mounting holes in the body panel to help determine correct mounting locations.
3. Determine the correct procedure to attach the each of the driver side brackets for your model/year:

Models without factory threaded inserts in body panel:

 - a. Starting with the driver side front mounting location, partially thread an 8mm Hex Bolt into the threaded end of an 8mm Bolt and Nut Plate, (Figure 2). Thread the Hex Bolt in until it is flush with the welded nut, (Figure 3). Use the Hex Bolt as a handle and insert the Bolt and Nut Plate into the oval hole, (Figure 4). Feed the threaded bolt on the Bolt Plate through one of the hex shaped factory holes. Thread (1) 8mm Plastic Retainer onto the threaded end and down tight against the body panel, (Figure 5). **NOTE:** The Plastic Retainer is designed to keep the Bolt/Nut Plate from falling into the body panel and to aid in Bracket installation. **IMPORTANT:** Repeat for the center and rear mounting location.
 - b. With assistance, hold the Side Armor up in position.

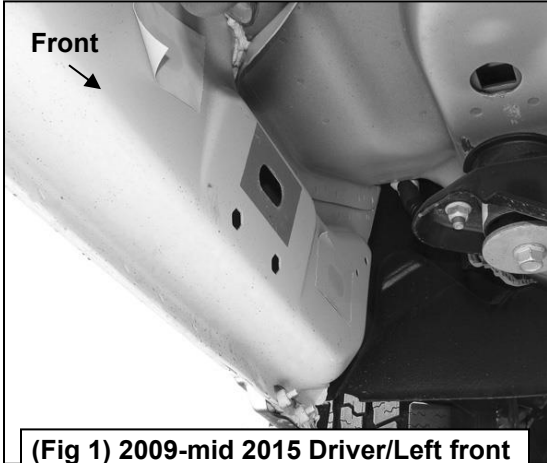
- c. Attach the front Bracket to the threaded end of the Bolt Plate with (1) 8mm Flat Washer, (1) 8mm Lock Washer and (1) 8mm Hex Nut, **(Figure 6)**. Repeat for the center and rear brackets. Do not tighten at this time.
- d. Remove the 8mm Hex Bolt from the nut on the Bolt Plate from **Step 3a**. Rotate the Bolt on the Bolt Plate until the threaded nut lines up with the remaining hole in the Mounting Bracket and body panel, **(Figures 6 & 7)**. Attach the Bracket to the threaded Nut Plate with (1) 8mm x 30mm Hex Bolt, (1) 8mm Lock Washer and (1) 8mm Flat Washer, **(Figure 7)**. Repeat for the center and rear brackets. Do not fully tighten hardware at this time.

Models with factory threaded inserts:

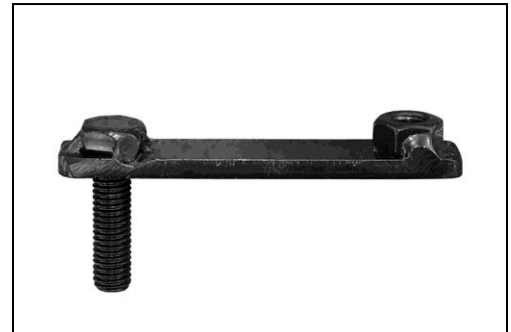
- a. With assistance, hold the HD Side Step up in position. Attach the driver side brackets to the threaded inserts with (6) 8mm x 30mm Hex Bolts, (6) 8mm Lock Washers and (6) 8mm Flat Washer, **(Figures 8 & 9)**. Leave hardware loose.
4. Next, select the driver side front Support Bracket. Attach the Bracket to the front facing side of the front Bracket with (1) 8mm x 30mm Hex Bolt, (2) 8mm Flat Washers and (1) 8mm Nylon Lock Nut, **(Figure 10)**. Rotate the Support Bracket to the back of the pinch weld. Line up the slots in the top of the Support Bracket with the (2) factory holes in the pinch weld. Attach the Bracket to the back of the pinch weld with (2) 6mm x 25mm Hex Bolts, (4) 6mm Flat Washers and (2) 6mm Nylon Lock Nuts, **(Figures 11 & 12)**. Do not fully tighten hardware at this time. **IMPORTANT:** 2009-10 models are not equipped with factory holes and will require drilling through the pinch weld to attach the Support Bracket. Do not drill through pinch weld at this time, **(see Step 7)**.
5. Move along the side of the body panel to the center mounting location, **(Figure 13)**. Repeat **Step 4** to install the driver side center/rear Support Bracket to the back of the center bracket and holes, (if equipped), in the pinch weld **(Figures 14)**.
6. Move to rear location, **(Figure 16)**. Repeat **Step 4** to attach the driver side rear/center Support Bracket to the back of the rear bracket and holes, (if equipped), in the pinch weld, **(Figure 17)**.
7. Properly level and adjust the HD Side Step and fully tighten all hardware.
2009-10 models requiring drilling for driver side Support Brackets:
 - a. Make sure the HD Side Step is level to the vehicle. Adjust and tighten all mounting hardware.
 - b. Line up the slots on the Support Brackets with the back of the pinch weld. Mark the location of the slots onto the pinch weld.
 - c. Drill (2) 1/4" holes through the pinch weld for each Support Bracket. **IMPORTANT:** Do not drill too close to the bottom edge of the pinch weld. Adjust the Brackets as necessary to move the slots up the body panel away from the edge. Drill the holes toward the outside of marked slots.
 - d. Attach each Support Bracket to the pinch weld with (2) 6mm Hex Bolts, (4) 6mm Flat Washers and (2) 6mm Nylon Lock Nuts, **(Figures 10, 12, 14)**. Check the HD Side Step for level then fully tighten all hardware.
8. Move to the passenger side of the vehicle. Remove tape covering front, center and rear locations. Repeat **Steps 2—7** for passenger HD Side Step installation.
9. Do periodic inspections to the installation to make sure that all hardware is secure and tight.

To protect your investment, wax this product after installing. Regular waxing is recommended to add a protective layer over the finish. Do not use any type of polish or wax that may contain abrasives that could damage the finish.

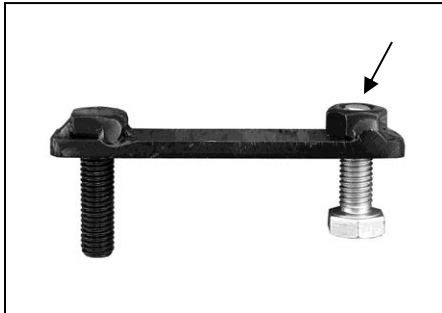
Driver Side Installation Pictured



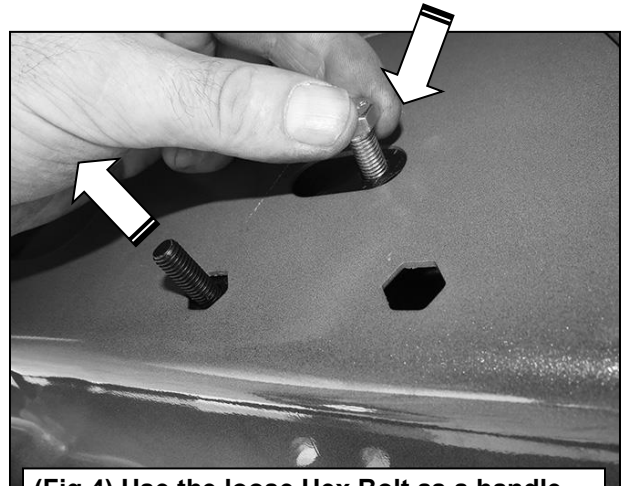
(Fig 1) 2009-mid 2015 Driver/Left front mounting location (No factory holes in pinch weld 2009-2011 models)



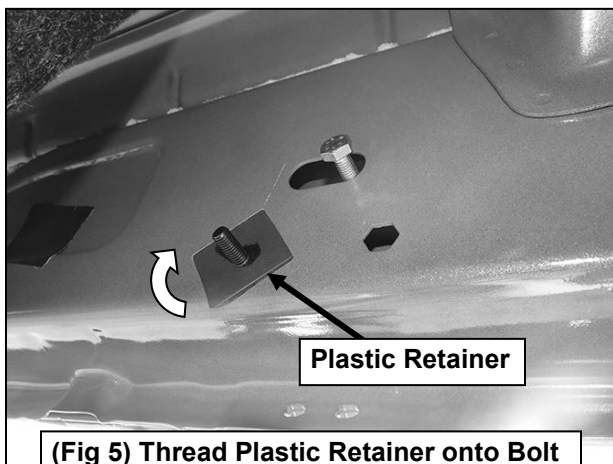
(Fig 2) 8mm Bolt-8mm Nut Plate, NOTE: 8mm Bolt-Nut Plate is not required on models with threaded inserts



(Fig 3) Thread (1) 8mm Hex Bolt into the nut on the plate. Stop when bolt reaches end of nut as pictured

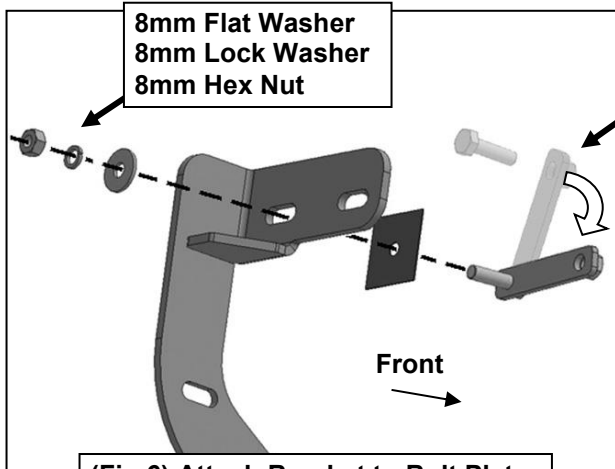


(Fig 4) Use the loose Hex Bolt as a handle. Insert the Bolt Plate into the oval hole and feed the threaded end out either factory hex shaped hole. IMPORTANT: Do not let go of the hex bolt until after Plastic Retainer has been threaded onto bolt (Fig 5)

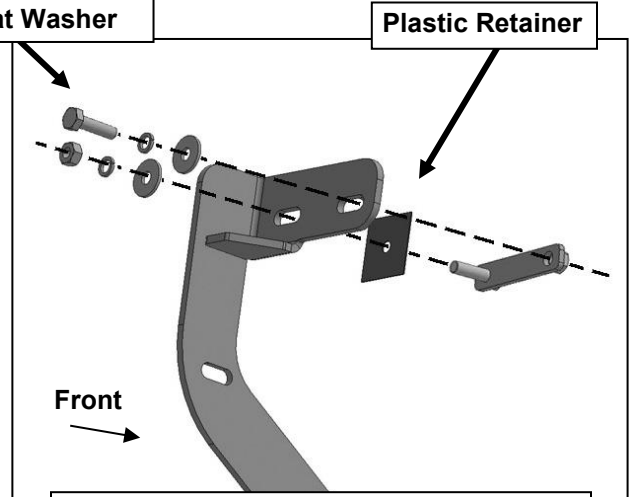


(Fig 5) Thread Plastic Retainer onto Bolt Plate to hold Bolt Plate in position.

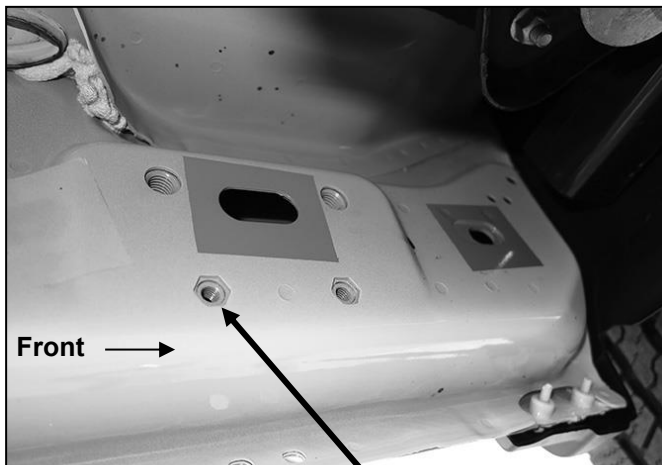
Driver Side Installation Pictured



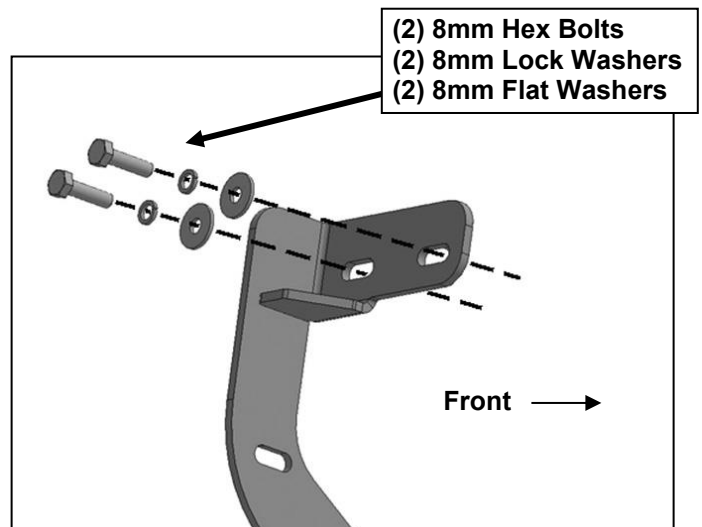
(Fig 6) Attach Bracket to Bolt Plate



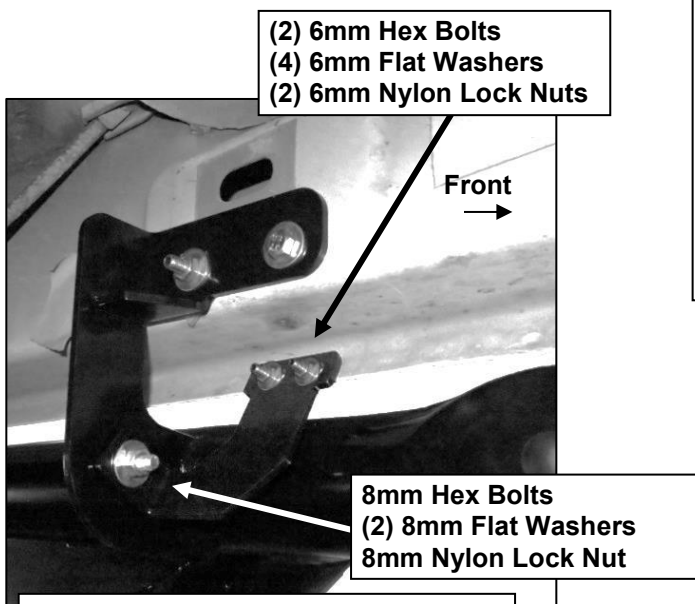
(Fig 7) Attach Bracket to threaded end of Bolt Plate first. Remove 8mm Hex Bolt (see Fig 3). Rotate Bolt Plate to line up with remaining factory hex shaped hole.



(Fig 8) Driver side front mid 2015-on, an example of models with factory installed threaded inserts

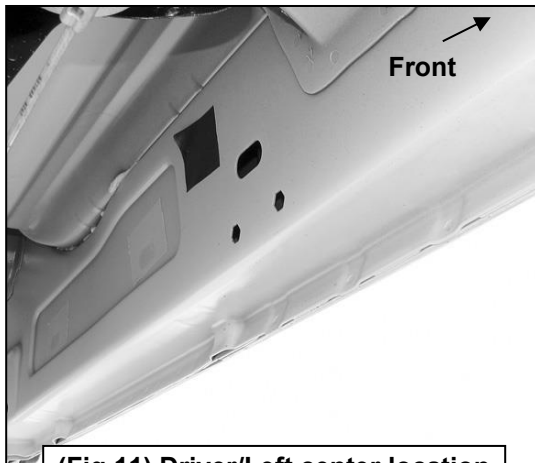


(Fig 9) Driver side front-models with factory installed threaded inserts. Bolt Plate not required

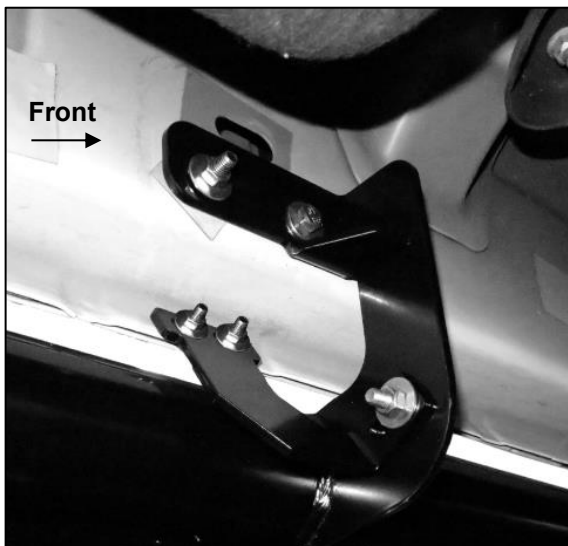


(Fig 10) Driver side front location

Driver Side Installation Pictured



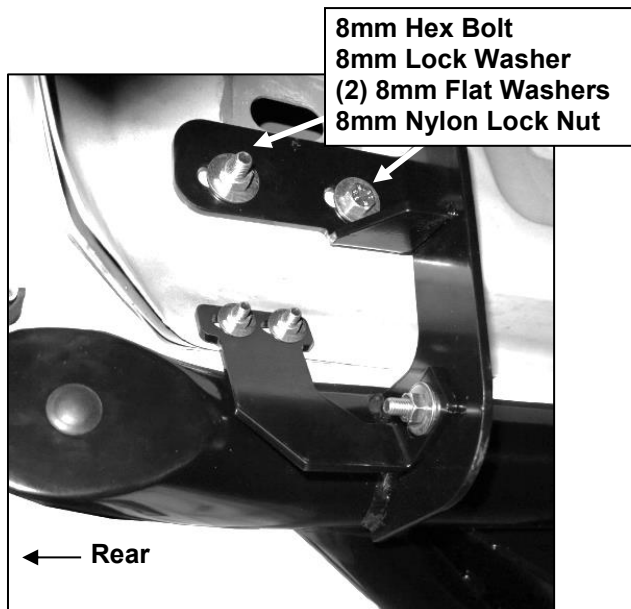
(Fig 11) Driver/Left center location



(Fig 12) Driver/Left center Bracket



(Fig 13) Driver/Left rear mounting location



(Fig 14) Driver/Left rear Mounting Bracket assembly

IMPORTANT: 2009-2010 models without holes in pinch weld will require drilling 1/4" holes through pinch weld to attach driver side front support bracket. Do complete installation of HD Side Steps first, level HD Side Step before drilling holes for support bracket.



Looking for dependable running boards & step bars?
Rely on Steelcraft for quality and long-lasting products.