



Installation Instruction

One Piece Grille Guard

03-06 Chevy Silverado 1500

NOTE: Carefully read this information before attempting to install this product. The manufacturer is in no way responsible for any damage to the vehicle or personal injury that may occur during the installation or use of this product. Check components received with components listed below. **NO DRILLING REQUIRED.**

QTY	DESCRIPTION
1	One Piece Front Guard
1	Upper Support Bracket-left
1	Upper Support Bracket-right
1	Lower Support Bracket-left
1	Lower Support Bracket-right
6	M12 x 30 Hex Bolt-zinc plated
6	M12 Lock Nut-zinc plated
12	M12 Flatwasher-zinc plated
2	M10 x 25 Hex Bolt-zinc plated
2	M10 Lock Nut-zinc plated
4	M10 Flatwasher-zinc plated

Step One: Locate the Upper Support Brackets. Using the factory bolts loosely attach them to the vehicle as shown in Figure #1.

Step Two: Remove the factory tow hooks and hardware from both sides and retain for later use. (NOTE: In order to use factory tow hooks with Front Guard, you must reverse them before installing the Lower Support Brackets.)

Step Three: Once the tow hooks are swapped, the slotted hole on Bottom Support Brackets where vertical bolt attaches, needs to be slightly enlarged towards the center of the truck. (NOTE: If the factory tow hooks are not going to be reused, the Lower Support Brackets do not have to be modified.)

Step Four: Using the factory hardware removed in Step Two, loosely attach Bottom Support Brackets to Vehicle (Figure 2).

Step Five: Locate M12 x 30 Hex Head Bolts, M12 Lock Nuts, and M12 Flat Washers. Position the Guard to the inside of the Bottom Support Brackets. Loosely attach Guard to Bottom Support Brackets using the hardware listed in this step (Figure 3).

Step Six: Locate M10 x 25 Hex Head Bolts, M10 Lock Nuts, and M10 Flat Washers. Bolt the Front Guard to the Top Support Brackets using the hardware listed in this step (Figure 4).

Step Seven: After checking for proper clearance and alignment of the Front Guard on the vehicle fully tighten all hardware.

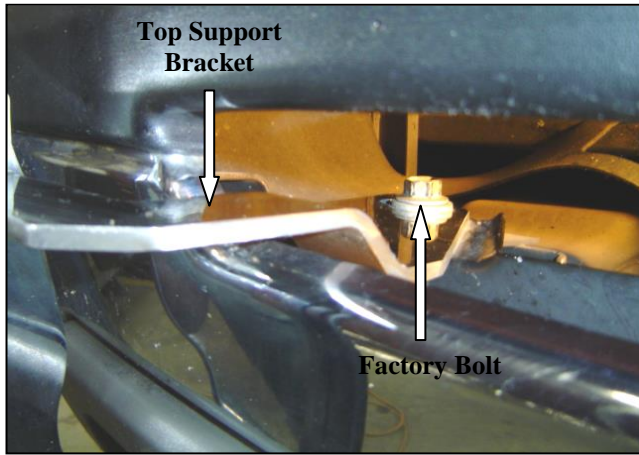


Figure 1

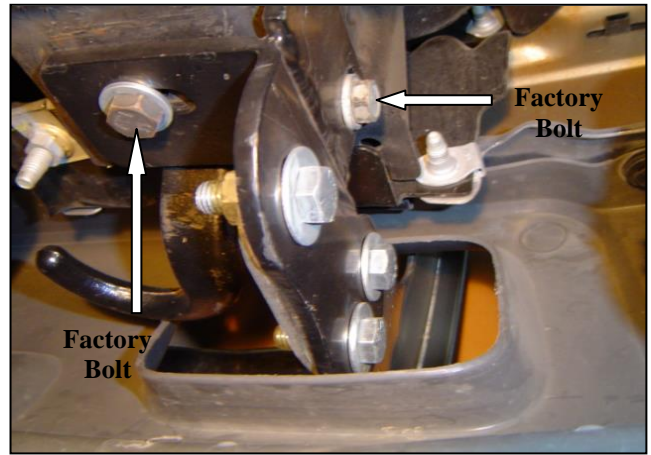


Figure 2

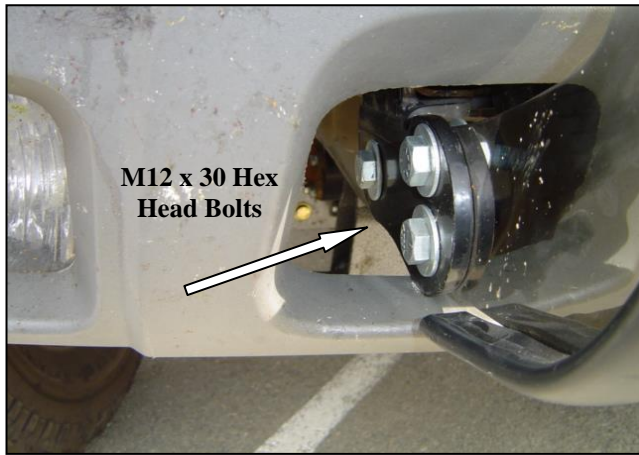


Figure 3

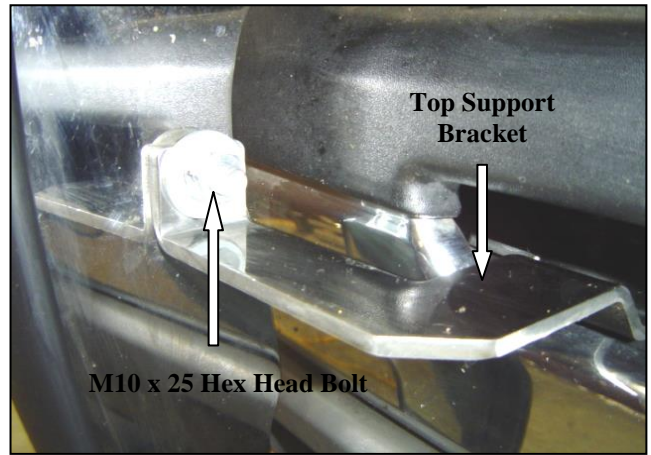


Figure 4

Please take care when assembling and installing this product to protect the finish and your investment. To protect your investment, wax this product after installing. Regular waxing is recommended. Do not use any type of polish/wax that contains abrasive that could damage the finish