

**PARTS LIST:**

|   |   |    |                                    |
|---|---|----|------------------------------------|
| 1 | Extreme Grille Guard                        | 4  | 12mm Hex Nuts                      |
| 1 | Driver/Left Side Bumper Support Bracket     | 6  | 8-1.25mm x 30mm Hex Bolts Gr. 10.9 |
| 1 | Passenger/Right Side Bumper Support Bracket | 12 | 8mm x 24mm OD x 2mm Flat Washers   |
| 4 | 12-1.75mm x 45mm Hex Bolts Gr. 10.9         | 6  | 8mm Lock Washers                   |
| 8 | 12mm x 32mm OD x 3mm Flat Washers           | 6  | 8mm Hex Nuts                       |
| 4 | 12mm Lock Washers                           |    |                                    |



**PROCEDURE:**

- 1. REMOVE CONTENTS FROM BOX. VERIFY ALL PARTS ARE PRESENT. READ INSTRUCTIONS CAREFULLY BEFORE STARTING INSTALLATION. ASSISTANCE IS HIGHLY RECOMMENDED! DRILLING THROUGH FACTORY BUMPER IS REQUIRED.**
- Start installation under the front of the vehicle. Remove the long factory bolts, (one per side), that go horizontally through the frame and tow hook, **(Figure 1)**. Loosen but leave the bottom bolts in the tow hooks in place. **NOTE:** If the vehicle is not equipped with tow hooks, hardware is provided to bolt the tab on the Grille Guard to the side of the frame described in **Step 5**.
- Open the hood. Carefully pry up the plastic clips holding each end of the rubber air deflector in place to access the end of the frame channel, **(Figure 2 & 3)**. **NOTE:** Pay close attention to the location of each clip for easy reinstallation. Remove the 3-bolt mounting plate bolted to the end of the frame on the driver and passenger side, **(Figure 4 & 5)**.
- Select the driver side Bumper Support Bracket. Insert the Bracket through the opening in the bumper. Line up the (3) holes in the Bracket with the holes in the end of the frame. Bolt the Bracket to the frame with the included (3) 8mm x 30mm Hex Bolts, (6) 8mm Flat Washers, (3) 8mm Lock Washers and (3) 8mm Hex Nuts, **(Figure 6A & 6B)**. Hold the Bracket up flush against the back of the bumper and tighten the hardware. Repeat this step for the passenger side Bumper Support Bracket installation.

**WARNING: The Extreme Grille Guard is very heavy. Properly supporting the weight of the Grille Guard with stands during installation is highly recommended to avoid possible injury or damage to vehicle.**

- With assistance, place the Grille Guard on stands at the approximate installation height. Hold the Grille Guard up to the front bumper and insert the bottom mounting tabs on the Grille Guard through the openings for the tow hooks, **(Figure 7)**. **NOTE:** It may be necessary to loosen or temporarily remove the tow hooks for more clearance for the Mounting Tabs. Line up the slots in the tabs with the holes for the long tow hook bolts removed in **Step 2, (Figure 8)**. Bolt the tabs to the frame with the tow hook bolts. Do not tighten hardware at this time. **NOTE:** If the vehicle is not equipped with tow hooks, use the included (2) 12mm x 45mm Hex Bolts,

**EXTREME GRILLE GUARD  
2011 CHEVY SILVERADO 25-3500**

(4) 12mm Flat Washers, (2) 12mm Lock Washers and (2) 12mm Hex Nuts to bolt the tabs on the Grille Guard to the sides of the frame.

6. Push the Grill Guard back against the bumper. Level and adjust the Grille Guard and tighten the hardware, **(Figure 9)**. **IMPORTANT:** Make sure that the Grille Guard is in the proper position. **DO NOT PROCEED** until the Grille Guard is level and aligned on the vehicle.
7. Use the slot in the mounting tab on the Grille Guard as a guide and drill a 1/2" hole through the center of the slot, the bumper and the Bumper Support Bracket behind the bumper installed in **Step 4**. **NOTE:** Start with a smaller sized drill bit and work your way up to 1/2" in small steps.

**Drill Warning-IMPORTANT!** Any cutting or drilling tool may break or shatter. Government regulations require safety glasses & equipment at all times when cutting or drilling.

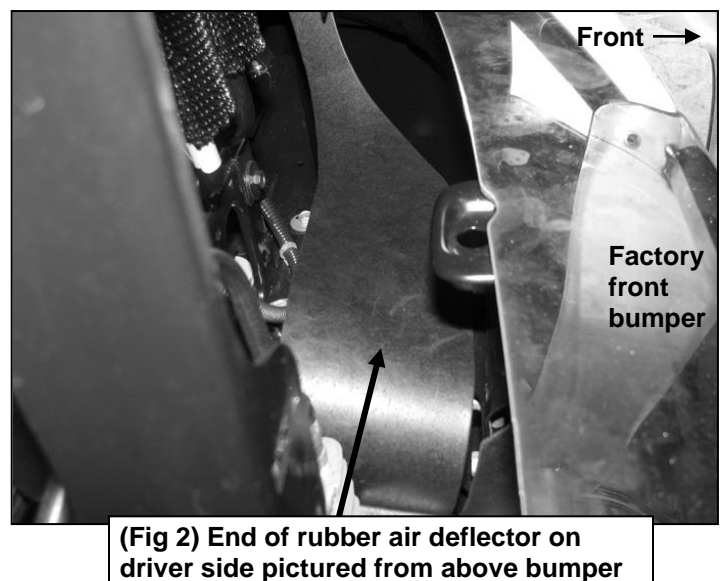
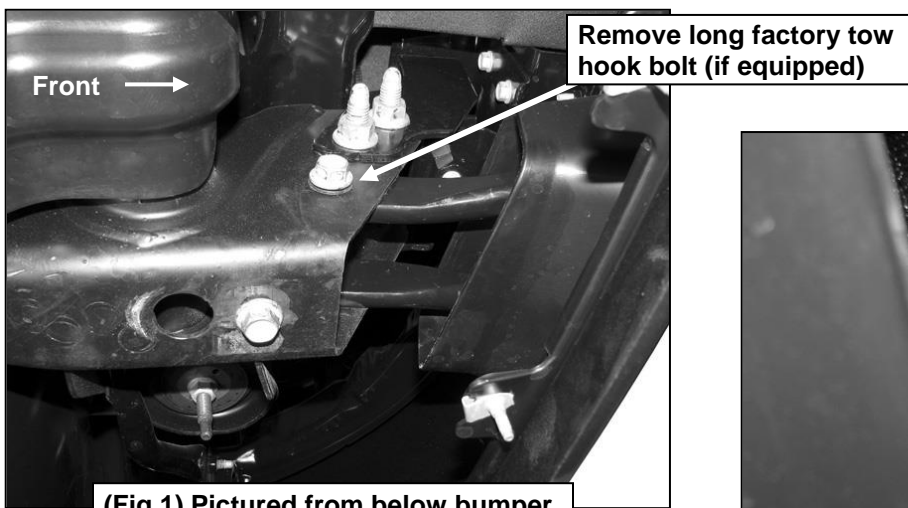
8. Bolt the Grille Guard to the bumper and Reinforcement Bracket with the included (2) 12mm x 45mm Hex Bolts, (4) 12mm Flat Washers, (2) 12mm Lock Washers and (2) 12mm Hex Nuts, **(Figure 10)**. Check for level and align Grille Guard as necessary. Once properly adjusted, tighten all hardware.
9. Reinstall the rubber air deflector using the factory hardware.
10. Do periodic inspections to the installation to make sure that all hardware is secure and tight.

**To protect your investment**, wax this product after installing. Regular waxing is recommended to add a protective layer over the finish. Do not use any type of polish or wax that may contain abrasives that could damage the finish.

**For stainless steel:** Aluminum polish may be used to polish small scratches and scuffs on the finish. Mild soap may be used also to clean the Grille Guard.

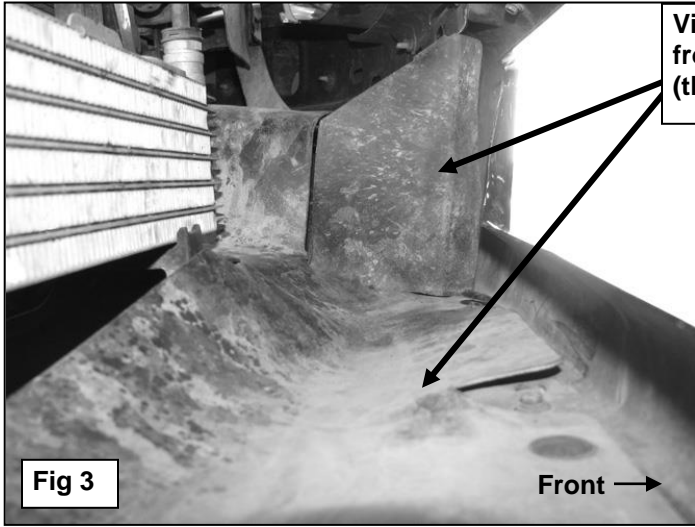
**For gloss black finishes:** Mild soap may be used to clean the Grille Guard.

**Driver Side Installation Pictured**

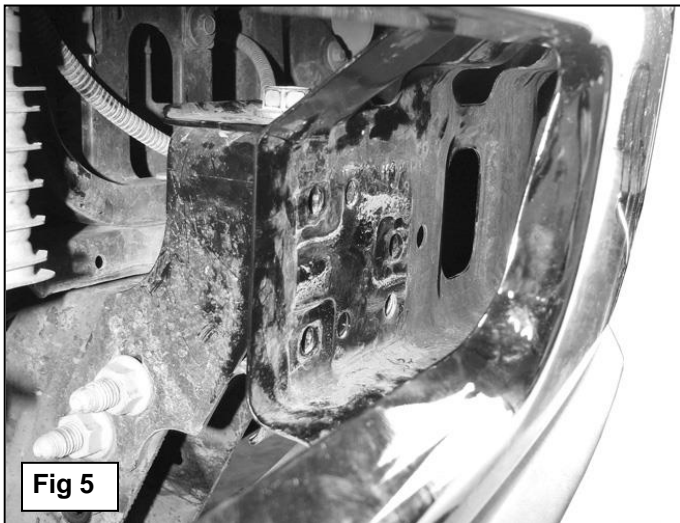


**EXTREME GRILLE GUARD  
2011 CHEVY SILVERADO 25-3500**

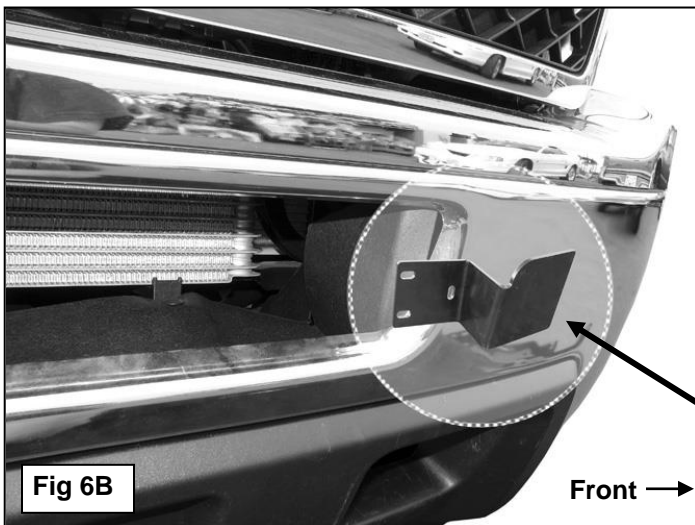
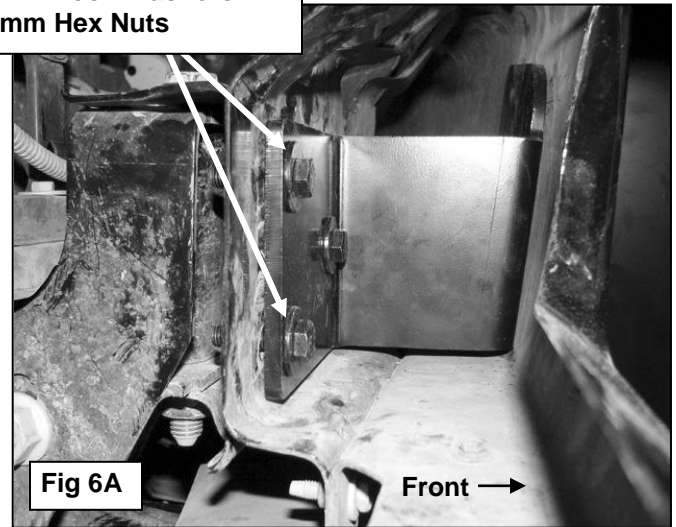
**Driver Side Installation Pictured**



Remove (3) factory hex bolts and cover plate w/clips



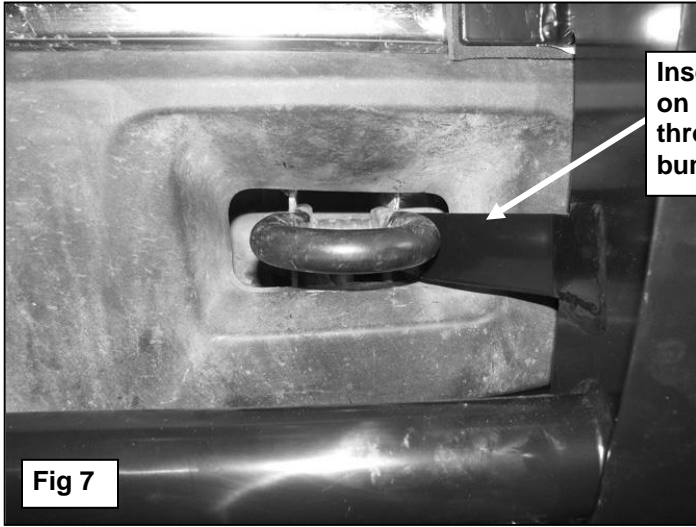
- (3) 8mm x 30mm Hex Bolts
- (6) 8mm Flat Washers
- (3) 8mm Lock Washers
- (3) 8mm Hex Nuts



Driver side Support Bracket illustrated to show Bracket position inside against the back of the front bumper

**EXTREME GRILLE GUARD  
2011 CHEVY SILVERADO 25-3500**

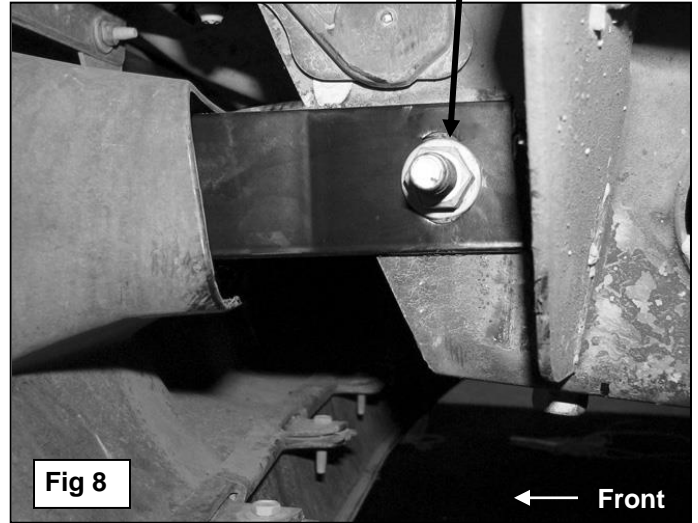
**Driver Side Installation Pictured**



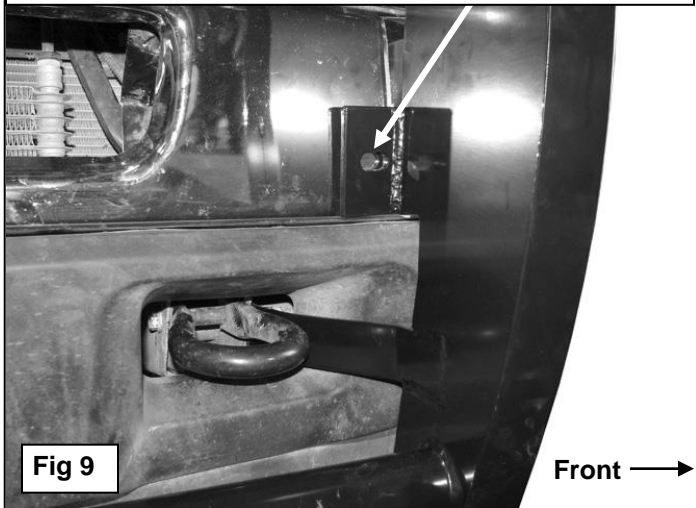
Insert mounting tab on Grille Guard through opening in bumper cover.

Bolt mounting tabs on Grille Guard to side of frame channel with factory hardware for tow hook or on models without tow hooks, use:

- 12mm Hex Bolt
- (2) 12mm Flat Washers
- 12mm Lock Washer
- 12mm Hex Nut



Once properly mounted and aligned to the vehicle, center punch location and drill 1/2" hole through slot in Grille Guard Bracket, front bumper and Support Bracket behind front bumper (see Figure 6)



- 12mm x 45mm Hex Bolt
- (2) 12mm Flat Washers
- 12mm Lock Washer
- 12mm Hex Nut

