

## STOP! IMPORTANT INFORMATION

**Warning:** Failure to disable the Air Filter Life System will cause a warning light that can only be reset by a GM Dealer. Please ensure you have disabled the system prior to driving the vehicle with your new S&B Intake. Please refer to steps 1-5 to cover this procedure.

### Before You Install:

We recently discovered that some 75-5137/D kits may be missing the MAF Extension Harness [AI2293-00]. Before installing, please check that you have the AI2293-00 included with your kit. If you are missing this harness please give us a call at 909-947-0015. We apologize in advance for the inconvenience this has caused you. Thank you.

## PART#: 75-5137 / 75-5137D

### Vehicle Application

**YEAR:** 2020-2022  
**MAKE:** Chevrolet / GMC  
**MODEL:** Silverado / Sierra 1500  
**ENGINE:** 3.0L Duramax

**Note:** This intake kit may not fit with the following Aftermarket Parts installed:

- Body Lift or Lowering Kit
- Custom Hood

### Tools Required

- 7mm, 10mm, 13mm Wrench
- 5/16" Nut Driver or Flat Blade Screwdriver
- Pin Removal Tool or Flat Blade Screwdriver
- T15, T20 Torx Bit
- Phillips Screwdriver
- 5/32" or 4mm Allen Wrench
- 1 Pair of Pliers or similar tool
- Topside Engine Creeper recommended

**Note:** Approximate Install Time: 2 Hr 00 Mins.

### S&B Filter Maintenance

KF-1077 Cotton Cleanable : If the enclosed filter is RED, it came pre-oiled from the factory. Click [here](#) for exact oil amount required for cleaning.

KF-1077D Dry Extendable : If the enclosed filters is WHITE, it is a disposable filter and should be discarded once it reaches capacity. This filter does not require oil.

### Before You Start

- Please read the entire product guide before proceeding.
- Ensure all parts are present.
- If you are missing any of the components, call our customer support at (909) 947-0015.
- Do not work on your vehicle while the engine is hot.
- Make sure the engine is turned off and the vehicle is in Park or the Parking Brake is set.

### Related Products

- Cotton Cleanable Filter (KF-1077)
- Dry Extendable Filter (KF-1077D)
- Cleaning & Oiling Kit (88-0008)

## Operation in Snow and Rain

If you are driving in heavy snowfall or extreme rain conditions, you should always check for accumulated snow and water on the air filter following your OE recommendations for driving in these conditions.

The following is recommended after operating the vehicle up to 100 miles in heavy snowfall or extreme rain: At the earliest opportunity, open the hood and check the air box and filter. If any snow has accumulated, make sure to remove the snow from the filter, box, and inlet. It is okay if the filter is a little wet. Wet filters will normally dry out on their own. If the filter is dripping wet, it should be replaced with another filter that is not wet. Do not reuse the dripping wet filter until it has naturally dried.

## Air Box Plug Testing

Stock intake boxes are a significant contributor to poor airflow which is why S&B designs custom air boxes with secondary and/or enlarged openings. With that said, S&B recognizes the benefits of cooler air, so we have included a plug to seal off the opening if so desired. For optimal performance, we recommend that the intake be used without the end cap except in conditions of extreme heatwave.

## Performance Testing

- After your installation is complete engage parking brake and start your engine. Listen for abnormal noises. If an air leak is detected, re-inspect hoses and connections as they may need to be repositioned and tightened
- S&B FILTERS recommends that you keep your OE intake system in the event it is required in the future.
- In order to maintain your warranty, all connections and components must be checked periodically for alignment and for proper tension on all connections. Failure to do so may void your warranty.
- Use only S&B FILTERS cleaning and oil products to service your filter. Using any other brand oil and or cleaners on your S&B air filter may void your warranty.

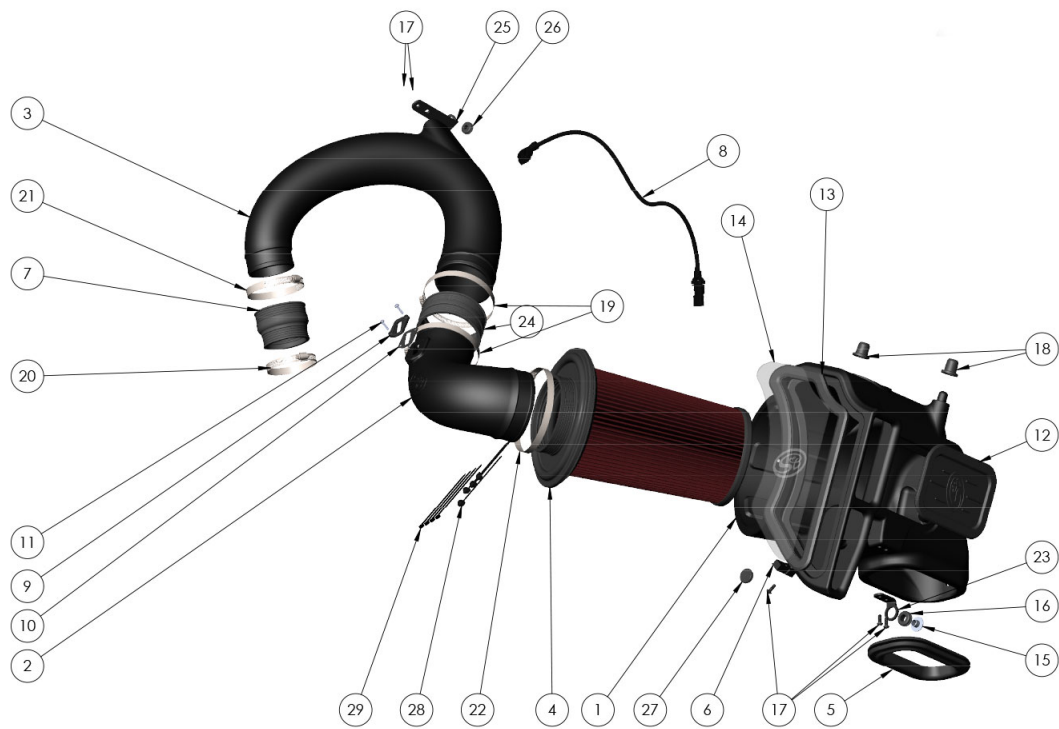
## Warning!

If your vehicle has a Vehicle Emission Control Information decal affixed to the factory airbox, a new replacement label must be obtained and installed in a readily visible position in the engine compartment in order to remain CARB compliant. Failure to do so will prevent the vehicle from passing a smog check. Replacement labels can be ordered from your local dealership. Regulations state that the VECI label shall not be affixed to any equipment which is easily detached from the vehicle. Label placement, under the hood on a painted surface, is recommended.

## Emission Standard

The California Air Resource Board (CARB) requires that an E.O. Identification label be applied to the vehicle in order to pass a smog check inspection when a Performance Intake Kit has been installed. You must place the E.O. Label provided on or near the intake kit after installation so that a smog check technician can easily verify the E.O. Number. Check the status of the exemption process by looking up a specific part number at [www.sbfilters.com](http://www.sbfilters.com). The CARB Exemption number and/or status is listed under the Product Details section for each part number. If the status shows as "Pending," CARB has yet to issue an exemption but the product has been submitted. Products that have not been issued an E.O. number are street legal in most states, but may not be used on emission controlled vehicles in the state of California and are for off-road use only. If you purchased your kit from S&B Filters directly, we will automatically mail you your Exemption Sticker when it is issued to us. If you purchased your kit from an authorized S&B Filters Dealer, log onto our web site and register to receive your Exemption Sticker.

EXPLODED VIEW:



ITEM NO.	PARTNO	DESCRIPTION	QTY.	ITEM NO.	PARTNO	DESCRIPTION	QTY.	ITEM NO.	PARTNO	DESCRIPTION	QTY.
1	AL1369B-00	AIRBOX	1	10	AI1823-00	MAF GASKET	1	20	AG1015-00	HOSE CLAMP #48	1
2	AL1369-00	SHORT INTAKE TUBE	1	11	AI1837-00	SEMS SCREW, 8-32 X 3/4"	2	21	AG1019-00	HOSE CLAMP, #56	1
3	AL1369L-00	LONG INTAKE TUBE	1	12	AI2289C-00	SILICONE BOX PLUG	1	22	AG1011-00	HOSE CLAMP, #88	1
4	KF-1077	PERFORMANCE REPLACEMENT FILTER	1	13	AI2288C-00	SNAP IN LID SEAL	1	23	AI2473-00	BOX MOUNTING BRACKET	1
5	AI2287C-00	SILICONE INLET SEAL	1	14	AI2292-00	CLEAR LID	1	24	AI1029C-00	SILICONE STRAIGHT COUPLER 4"	1
6	AI2285-00	HARNESS BRACKET	1	15	AI2296-00	ALUMINUM SHOULDER WASHER	1	25	AI2446-00	TUBE SUPPORT BRACKET	1
7	AI1768C-00	REDUCING COUPLER 3.125" TO 2.75"	1	16	AI1563-00	PANEL GROMMET	1	26	AI2557-00	TUBE SUPPORT BRACKET GROMMET	1
8	AI2293-00	MAF HARNESS EXTENSION	1	17	AI1911-00	1/4-20 BHSC BLACK	5	27	AI1705-00	FILTER MINDER PLUG	1
9	AI1822-00	MAF MOUNT PAD	1	18	AI2291C-00	MOUNTING PRONG GROMMET	2	28	AI2154-00	PUSH IN MOUNT CABLE TIE	4
				19	AG-1009-00	HOSE CLAMP, #72	2	29	AI1750-00	CABLE TIE, 9" LONG	4

# INSTALLATION STEPS

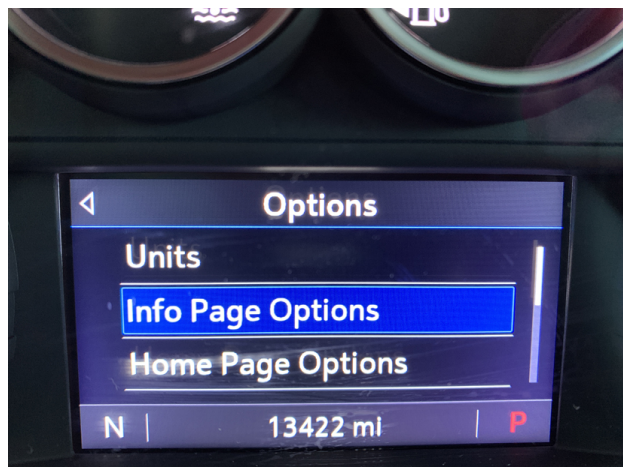
## STEP 1

To prevent the following message from displaying, the Air Filter Life system will need to be disabled.



## STEP 2

Navigate to the Options section of the Driver Information Center, and select the Info Page Options.



## STEP 3

Ensure that the Air Filter Life has a green check mark next to it.



## STEP 4

Navigate to the Info section of the Driver Information Center, and scroll down to the Air Filter Life section. Press the wheel in to select the Menu for the Air Filter Life, and select Disable.





## STEP 5

The screen should now display “Disabled”, as shown. Please verify the screen still shows disabled after the battery disconnect has been completed. If not, please repeat the process.



## STEP 6

Disconnect Battery. Disconnect the negative battery cable by loosening the terminal clamp and removing it from the battery post. Note: Failure to disconnect the battery for a minimum of 2 hours may cause the CEL to illuminate upon completion of the installation and subsequent operation. Do not skip this step! Tool Needed: 10mm Wrench or Socket.



## STEP 7

Remove hood latch lever. Tool Needed: T15 torx bit.



## STEP 8

Remove the push clips holding down the large plastic air diverter. Remove the large plastic air diverter and set aside. Tool Needed: Panel removal tool or similar.



### STEP 9

Disconnect and remove the support brace near the stock air inlet tube. Tool Needed: 13mm Wrench or Socket.



### STEP 10

Remove the push clip holding the top of the air inlet tube in place, and set the clip aside, separate from the other clips, as this one is unique. Tool Needed: Panel removal tool or similar.



### STEP 11

Disconnect the radiator support brace spanning from the core support to frame. Tool Needed: 13mm Wrench or Socket.



### STEP 12

Remove the bolt holding down the front coolant overflow tube. Tool Needed: 10mm Wrench or Socket.





### STEP 13

Remove the bolt holding down the fuse box bracket, and push the fuse box as far forward and out of the way as possible. Tool Needed: 10mm Wrench or Socket.



### STEP 14

Pull the stock air inlet tube up enough that it is no longer connected to the stock airbox, it is not necessary to remove the tube to install the S&B Filters Cold Air Intake.



### STEP 15

Carefully disconnect the large wire harness at the front of the air intake. The snap feature is designed to release under sufficient upward force, however, pulling upward while tilting the harness toward the rear of the vehicle will help disconnect the harness.



### STEP 16

Disconnect the push clips (wrapped into the harness) from the stock air intake, there should be three, two toward the front of the vehicle and one toward the engine. Tool Needed: Panel removal tool or similar.



### STEP 17

Disconnect the MAF Harness. Pull back on the red tab to unlock the connector. Press down on the black tab directly under the red tab and pull rearward to disconnect the connector.



### STEP 18

Loosen the hose clamp on either end of the stock flexible coupler, the coupler can now be removed from between the stock intake tube and the stock air box. Tool Needed: 7mm nut driver or Flat Blade Screwdriver.



### STEP 19

Loosen the nut with a captive washer holding down the stock air box. Set aside the nut for reuse. Tool Needed: 10mm wrench or socket.



### STEP 20

Remove the stock air box by lifting the front high enough to clear the stud, and pulling the airbox forward, sliding the rear facing prongs out of the bracket.





## CONFIGURATION

**STOP. AT THIS POINT YOU NEED TO DECIDE WHICH CONFIGURATION YOU WANT TO INSTALL. IF YOU WANT TO INSTALL THE S&B INTAKE SYSTEM TO THE TURBO, PROCEED TO STEP 21, IF YOU WANT TO INSTALL TO THE STOCK INTAKE TUBE SKIP AHEAD TO STEP 29.**

## STEP 21

Remove the engine cover by unscrewing the hold down bolt. Unscrew the oil fill cap. Lift the front of the cover and pull the cover toward the front of the vehicle. Be sure to replace the oil fill cap. Tool Needed: 10mm Wrench or Socket.



## STEP 22

Remove the bolt holding down the rear coolant reservoir. Let the reservoir rest where the stock air box was formerly located. If you wish to disconnect either of the overflow lines, be sure to unscrew the cap to relieve the pressure in the reservoir. Tool Needed: 10mm Wrench or Socket.



## STEP 23A

Loosen the hose clamp closest to the turbo inlet on the stock tube. The access to this hose clamp is very limited, caution and patience are required. Tool Needed: 7mm socket or Nut Driver, or Flat Blade Screwdriver.





## STEP 23B



## STEP 24

Lift upward on the intake tube, until you feel it release. There is a mounting point with a grommet molded into the intake tube, this must be dislodged before the tube can be removed. Once the tube is free, the easiest way to remove it is by pulling it toward the driver's side and pulling it through the area where the coolant reservoir was.



## STEP 25

Find the long S&B Intake tube (3) and the mounting bracket hardware kit (HP1725-00). Attach the small grommet (26) to the bracket (27) and the bracket to the tube with the 1/4 x 20 Button Head Cap Screws (17). Tool Needed: 5/32" or 4mm Hex Key.



## STEP 26

Attach the Step Coupler (7) to the Long Intake Tube using the #56 hose clamp (21). Snug the #48 hose clamp (20) on the small end of the coupler, but do not fully tighten.



## STEP 27

Feed the long tube through the engine bay and slide the coupler onto turbo inlet. It is possible to feel the mounting ball for the bracket, shown in the photo, and with the tube on the turbo inlet the alignment should be close. Line the ball and bracket up and push down on the tube until it seats. Tighten the hose clamp on the turbo inlet. Tool Needed: 7mm nut driver or Flat Blade Screwdriver.



## STEP 28

Reinstall rear coolant reservoir and mounting bolt. Tool Needed: 10mm socket or wrench



## STEP 29

Find the S&B Air Intake Box (1) and the Silicone Inlet Seal (5). Install the Inlet Seal onto the Air Box.



## STEP 30

Attach the Harness Bracket (6) onto the airbox with the 1/4 x 20 Button Head Cap Screw (17). Tool Needed: 5/32" or 4mm Hex Key.





### STEP 31

Install the Panel Grommet (16) into the Air Box Mounting Bracket (24). Install the Machined Aluminum Shoulder Washer (15) into the Panel Grommet. Install the Air Box Mounting Bracket (24) with the ¼ x 20 Button Head Cap Screws (17). Tool Needed: 5/32" or 4mm Hex Key.



### STEP 32

If desired, install the Silicone Box Plug (12) into the side of the airbox. The plug is designed to be able to be inserted from either the interior or exterior of the box; install according to preference.



### STEP 32B



### STEP 33

Install the Mounting Prong Grommets (18) onto the rear prongs on the Air Box.



### STEP 34

Install the Airbox into the vehicle, sliding the prongs into their holes and lowering the box onto the stud. Loosely Reinstall the nut with a captive washer onto the stud.



### STEP 35

Separate the fuse box from the fuse box bracket by pressing the tab, and pulling the two apart.



### STEP 36

Reinstall the fuse box bracket. Ensure the fuse box is near, but not attached to the bracket. Tool Needed: 10mm wrench.



### STEP 37

Reinstall the Radiator core support bracket. Ensure the fuse box is beneath the bracket, in its stock area, before tightening the bracket. Tool Needed: 13mm Wrench or Socket.





### STEP 38

Insert the stock air inlet tube into the Inlet Seal on the S&B Air Box. The stop on the stock air inlet tube should be touching the seal when fully inserted. It may be helpful to guide the tube with one hand inside the air box.



### STEP 39

Reattach the unique push clip for the air inlet tube and reinstall the support bracket. Tool Needed: 13mm Wrench or Socket.



### STEP 40

Tighten down the nut with a captive washer to secure the airbox. Tool Needed: 10mm wrench or socket.



### STEP 41

Re-attach fuse box to fuse box bracket.





## STEP 42

Attach the large, forward wire harness to the Harness Bracket.



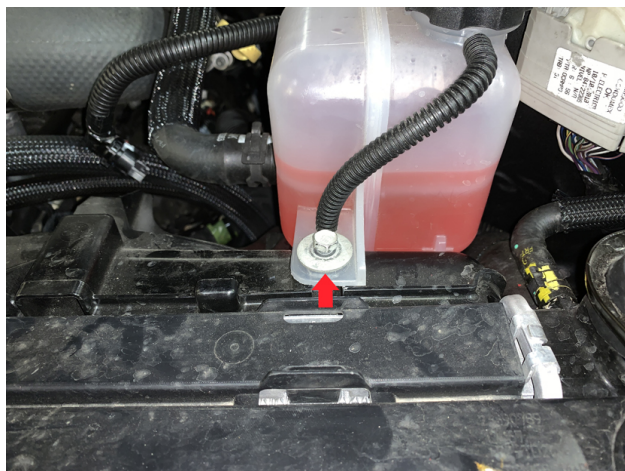
## STEP 43

Insert the push clips into the small holes in the S&B Air Box.



## STEP 44

Reinstall the bolt holding down the front coolant reservoir. Tool Needed 10mm socket or wrench.



## STEP 45

Reinstall the large plastic air diverter and hood latch lever. Tool Needed: T15 torx bit.



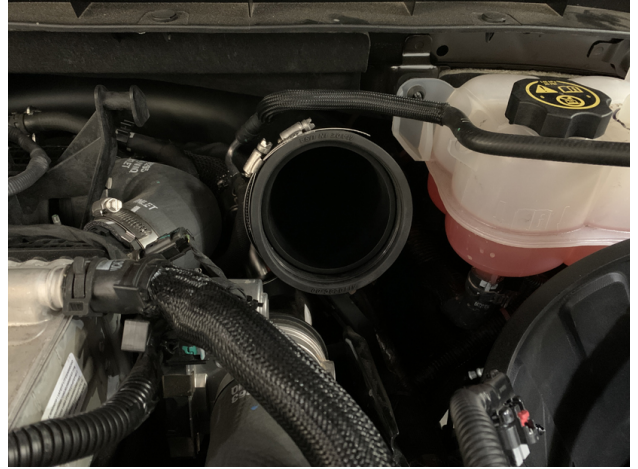
### STEP 46

Attach the Push In Cable Tie (26) into the upper hole in the back side of the airbox, and loop it back into itself, leaving it loose. This tie will be tightened at the end of the installation.



### STEP 47

Attach the Straight Coupler (25) to the Long S&B Intake Tube using the supplied #72 Hose Clamp (19) and tighten with the coupler against the stop bead. If the Long Tube installation was skipped, attach to the stock tube. Tool Needed: 5/16 nut driver or similar.



### STEP 48

Find the S&B Air Filter (2) and snap the filter into the airbox. The installation is easiest when the snap is chased around the perimeter of the filter base, starting with the lowest point of the filter. Attach the #88 Hose Clamp (22) if not already attached.



### STEP 49

Remove the MAF sensor from the stock air box lid. Tool Needed: T20 torx bit.





## STEP 50

Find the Short S&B Intake Tube (2) and HP1407-00. Install the MAF Sensor into the Short S&B Intake Tube using the MAF Pad (9), MAF Gasket (10), and supplied screws (11). Take care that the MAF pad and sensor are oriented correctly on the MAF boss on the tube, as shown. Tool Needed: Philips Head Screwdriver



## STEP 51

Insert the Short S&B Intake Tube into the Straight Coupler, then insert the tube into the Filter flange. Tighten both hose clamps.



## STEP 52

Attach the MAF Harness Extension Cable (8) to the MAF sensor.



## STEP 53

Feed the MAF Harness Extension Cable through the cable tie installed in Step 46 to keep it away from hot surfaces or moving parts.



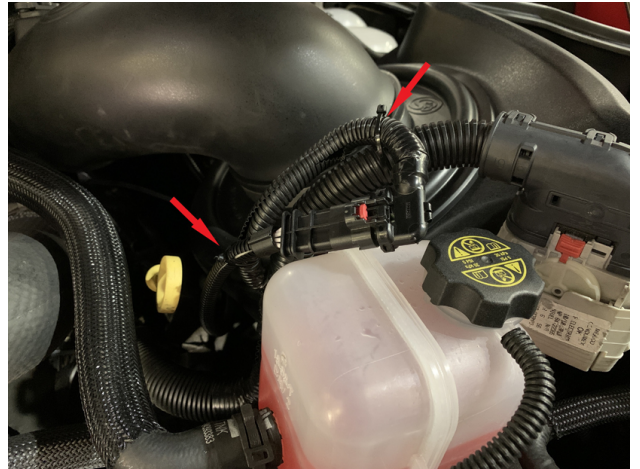
### STEP 54

Connect the MAF Harness Extension Cable to the stock MAF Harness and tighten the Push In Cable Tie.



### STEP 55

Zip tie the stock MAF harness to the large wire harness in front.



### STEP 56

Reinstall the engine cover. Tool needed: 10mm socket.



### STEP 57

Install the plug (27) into the socket access hole on the airbox.





## STEP 58

Find the S&B clear lid (14). Remove the film.



## STEP 59

Install the lid into the lid seal (13).



## STEP 60

Install the lid and lid seal into the airbox starting from the tight corners and curved edge, working to the straight side.



## STEP 61

Reconnect the Battery connections. Inspect your installation, ensure the kit is properly positioned and all fasteners are secure. The installation is now complete.

