



SHOP BY VEHICLE



0

INSTALL INSTRUCTIONS FOR 75-5134

PRINT

BEFORE YOU START

Please read the entire product guide before proceeding. Ensure all parts are present. If you are missing any of the components, call our customer support at (909) 947-0015. Do not work on your vehicle while the engine is hot. Make sure the engine is turned off and the vehicle is in Park or the Parking Brake is set.

REQUIRED TOOLS

10mm, 13mm Wrench & Socket, 5/16" Nut Driver & 1/4" Nut Driver or Flat Blade Screwdriver, Phillips Screwdriver, Pliers or Channel Locks

Note: Approximate Install Time: 1 Hr 00 Mins.

Note: This intake kit may not fit with the following Aftermarket Parts installed: Body Lift or Lowering Kit, Custom Hood, Throttle Body Spacer / Upgrade



ITEM NO.	PARTNO	DESCRIPTION	QTY.
1	AL1357B-00	AIRBOX	1
2	AL1357-00	INTAKE TUBE	1
3	KF-1073	HIGH PERFORMANCE FILTER	1
4	AI1768C-00	STEP COUPLER 2.75 X 3.125	1
5	AI2352C-00	SILICONE LID SEAL	1
6	AI2289C-00	SILICONE BOX PLUG	1
7	AI1984C-00	IAT SENSOR GROMMET	1
8	AI1701-00	FITTING, QUICK CONNECT TO 3/8 NPT, ALUMINUM	1
9	AI2291C-00	MOUNTING PRONG GROMMET	1
10	AI2599-00	CLEAR LID	1
11	AG1007-00	HOSE CLAMP, #52	1
12	AG1015-00	#48 HOSE CLAMP	1
13	AG1010-00	HOSE CLAMP, #80	1
14	AI1983-00	M6-1.0 X 25mm WITH CAPTIVE WASHER	2
15	AI2154-00	PUSH IN MOUNT CABLE TIE	4



Hi. Need any help?



STEP 1

With the ignition switched off and the parking brake set, disconnect the negative battery terminal on the battery.

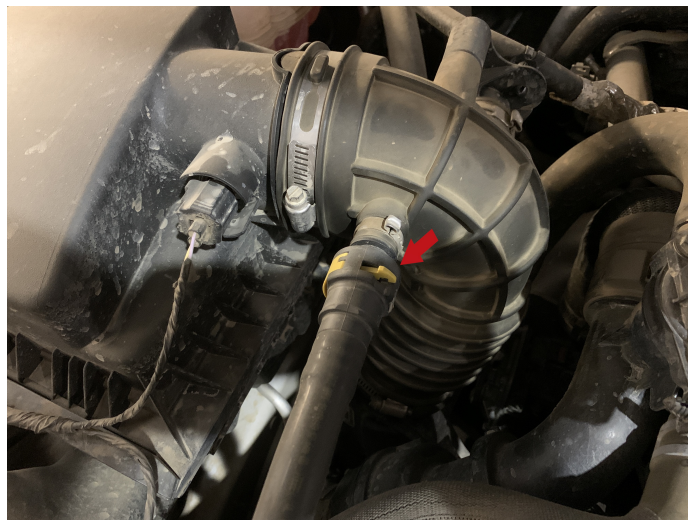
IMPORTANT: Failure to disconnect the battery for a minimum of 2 hours may cause the Check Engine Light to illuminate upon completion of the installation or subsequent operation.

DO NOT SKIP THIS STEP!



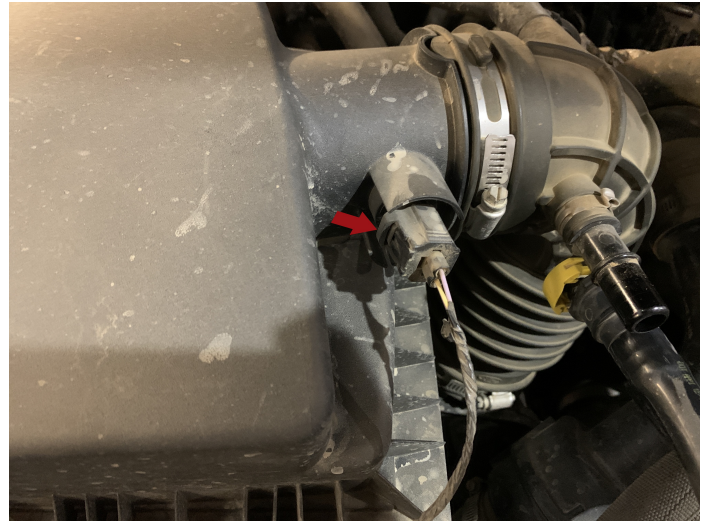
STEP 2

Slide the yellow locking tab out and disconnect the connector from the tube.



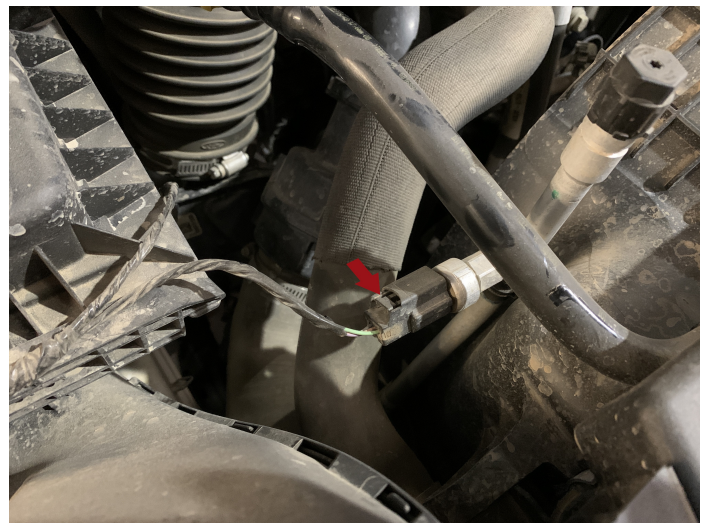
STEP 3

Depress the locking bottom and disconnect the electrical connector.



STEP 4

Depress the button and disconnect this electrical connector.



STEP 5

Remove the push pin from the hole.



STEP 6

Remove the bolts holding down the air intake scoop.



STEP 7

The scoop is now free after the bolts are removed.



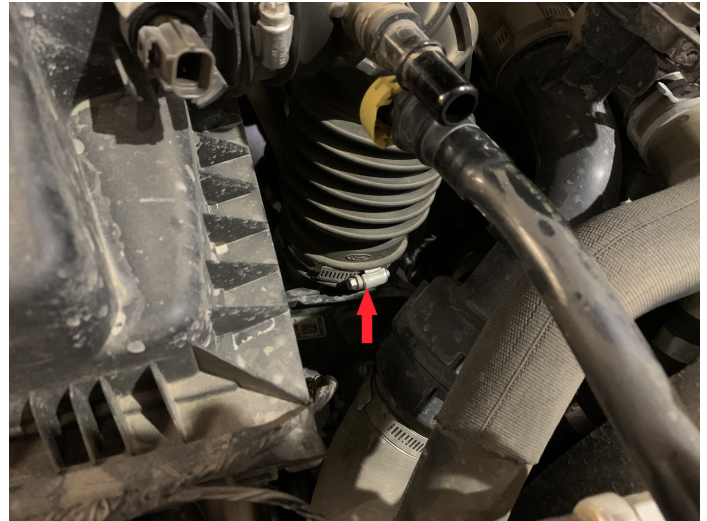
STEP 8

Remove the 2 push pins that are behind the front scoop and attached to the airbox.



STEP 9

Remove the hose clamp connecting the tube to the resonator .



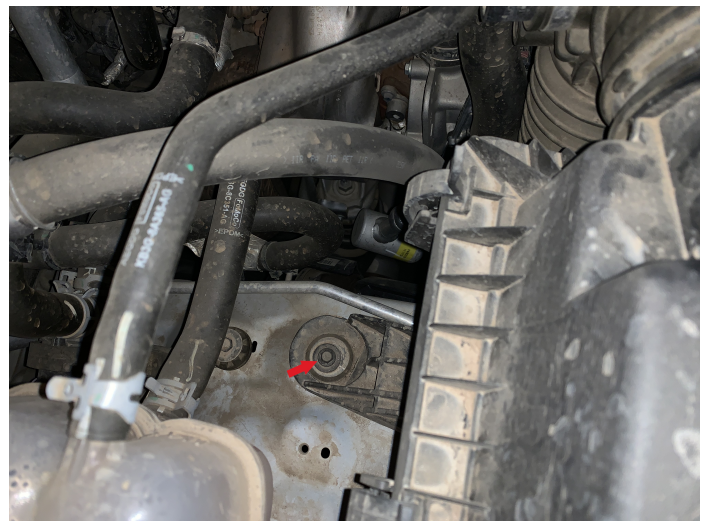
STEP 10

Remove the bolt holding the air box to the body.



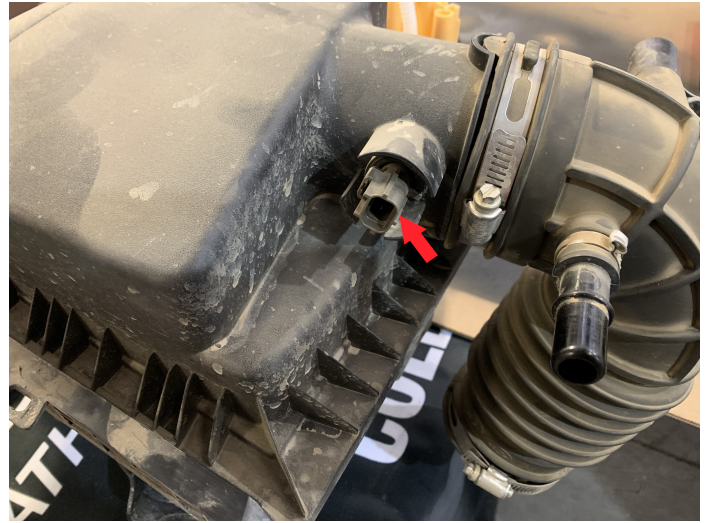
STEP 11

Remove the 2nd bolt holding the airbox to the body and remove the airbox and tube from the truck.



STEP 12

Rotate the air intake temp sensor counterclockwise and remove from the stock intake.



STEP 13

Insert the rubber intake air sensor adaptor(#7) into the hole the S&B intake tube.



STEP 14

Insert the IAT sensor and rotate clockwise.



STEP 15

Install the NPT to quick connect fitting(#8). This is an NPT fitting, hand tighten the fitting. There will be about 3 threads showing when the fitting is properly tightened.



STEP 16

Install the rubber mounting prong grommet(#9) onto the bottom of the airbox



STEP 17

Install 2 push in mounting cables(#15) to the harness.



STEP 18

Install the step coupler(#4) onto the resonator with the included hose clamps on both ends. Tighter the hose clamp on the resonator side.



STEP 19

Install the optional box plug(#6) into the airbox. We recommend using the box plug when outside temps are over 100 degrees on average.



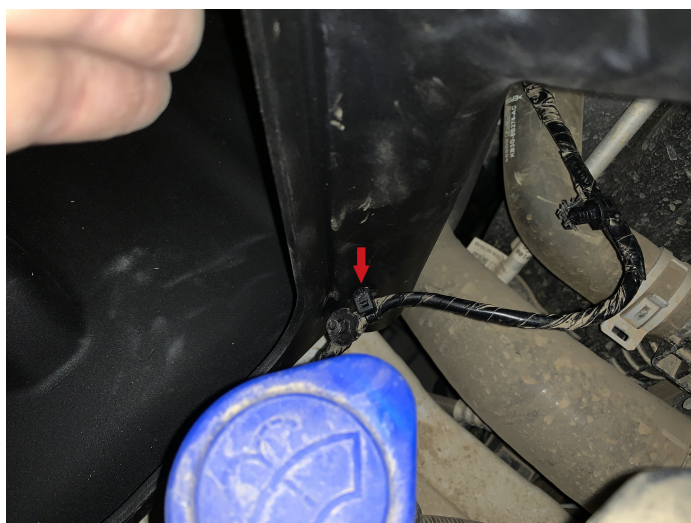
STEP 20

Place the S&B intake box into the truck



STEP 21A

Push in the first prong(#15) into the hole on the S&B air box



STEP 21B

Push in the 2nd prong(#15) into the hole on the airbox.



STEP 22

Install the included bolts(#14) into the airbox to mount the box to the body of the truck.



STEP 23

Push the filter flange into the filter so the filter can fit easier into the airbox.

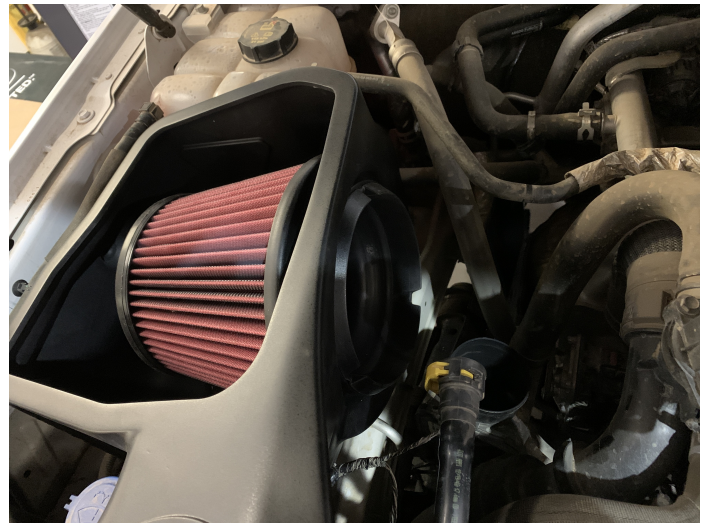


STEP 23B



STEP 24

Place the filter into the airbox.



STEP 25

Pull the flange back out and "snap" the filter intake the air box.



STEP 26

Install the S&B intake tube into the step coupler and filter. Tighten both hose clamps



STEP 27

Install the electrical connector onto the IAT sensor.



STEP 28

Install the female quick connect onto the S&B quick connect fitting



STEP 29

Push into the included push in cable tie(#15) into the back side of the intake tube and tie to the hose.



STEP 30

Remove the protective layer on the S&B lid



STEP 31

Install the S&B lid seal(#5) onto the clear lid.



STEP 32

Install the clear lid onto the airbox and "snap" it in until its fully seated.



SUPPORT

[CONTACT US](#)

[PH: \(909\) 947-0015](#)

[FAQS](#)

[MILLION MILE WARRANTY](#)

[YOUR VEHICLE'S WARRANTY](#)

[UPGRADE GUARANTEE](#)

[SHIPPING & RETURNS](#)

[SAFETY DATA SHEETS](#)

ABOUT US

[WHY S&B](#)

[OUR TESTING PROCESS](#)

[FIND A DEALER](#)

[BECOME A DEALER](#)

[LET S&B USE YOUR VEHICLE](#)

[UNILATERAL PRICING POLICY](#)



© 2023, S&B- ALL RIGHTS RESERVED

[ACCESSIBILITY](#)

[TERMS OF USE](#)

[PRIVACY POLICY](#)