

## STOP! IMPORTANT INFORMATION

**Warning:** Failure to disable the Air Filter Life System will cause a warning light that can only be reset by a GM Dealer. Please ensure you have disabled the system prior to driving the vehicle with your new S&B Intake. Please refer to steps 42-46 to cover this procedure.

**PART#: 75-5128 / 75-5128D**

### Vehicle Application

**YEAR:** 2019-2022  
**MAKE:** Chevrolet/GMC  
**MODEL:** Silverado/Sierra 1500  
**ENGINE:** 5.3L, 6.2L Gas

This intake kit may not fit with the following aftermarket parts installed:

- Body Lift or Lowering Kit
- Custom Hood

### Tools Required

- 10mm, 13mm, 3/4 Inch Wrench
- T15, T20 Torx Bit
- Pin Removal Tool or Flat Blade Screwdriver
- 5/16" Nut Driver or Flat Blade Screwdriver
- Phillips Screwdriver
- P5/32" or 4mm Allen Wrench
- 1 Pair of Pliers or similar tool

**Note:** Approximate Install Time: 1 hour

### S&B Filter Maintenance

KF-1072 Cotton Cleanable : If the enclosed filter is RED, it came pre-oiled from the factory.

KF-1072D Dry Extendable : If the enclosed filters is WHITE, it is a disposable filter and should be discarded once it reaches capacity. This filter does not require oil.

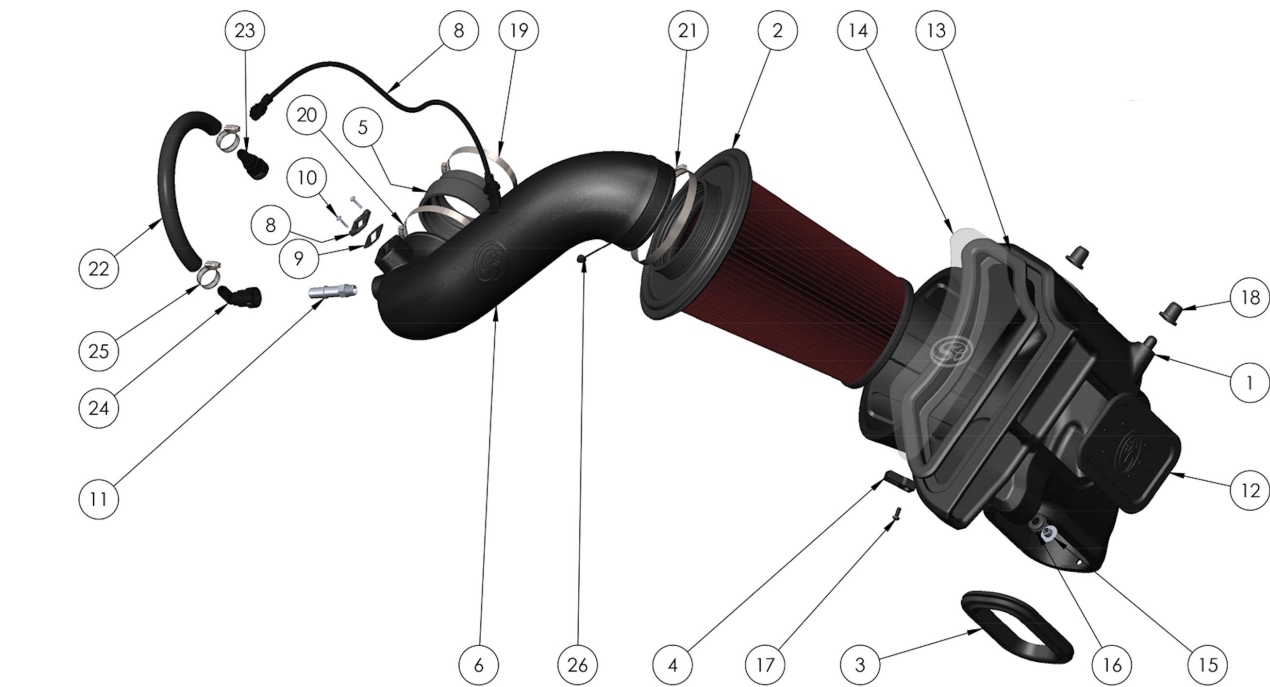
### Before You Start

- Please read the entire product guide before proceeding.
- Ensure all parts are present.
- If you are missing any of the components, call our customer support at (909) 947-0015.
- Do not work on your vehicle while the engine is hot.
- Make sure the engine is turned off and the vehicle is in Park or the Parking Brake is set.

### Related Products

- Cotton Cleanable Filter (KF-1072)
- Dry Extendable Filter (KF-1072D)
- Cleaning & Oiling Kit (88-0008)

PARTS LIST



BOM TABLE				BOM TABLE			
ITEM NO.	PARTNO	DESCRIPTION	QTY.	ITEM NO.	PARTNO	DESCRIPTION	QTY.
1	AL1353-00	AIRBOX	1	14	AI2292-00	CLEAR LID	1
2	KF-1072	PERFORMANCE REPLACEMENT FILTER	1	15	AI2296-00	MACHINED ALUMINUM SHOULDER WASHER	1
3	AI2287C-00	SILICONE INLET SEAL	1	16	AI1563-00	PANEL GROMMET	1
4	AI2285-00	HARNESS BRACKET	1	17	AI1911-00	1/4-20 BHSC BLACK	1
5	AI1665C-00	SILICONE STEP COUPLER	1	18	AI2291C-00	MOUNTING PRONG GROMMET	2
6	AL1354-00	INTAKE TUBE	1	19	AG1008-00	HOSE CLAMP, #60	1
8	AI2293-00	MAF HARNESS EXTENSION	1	20	AG-1009-00	HOSE CLAMP, #72	1
8	AI1822-00	MAF MOUNT PAD	1	21	AG1011-00	HOSE CLAMP, #88	1
9	AI1823-00	MAF GASKET	1	22	AI1039-09	LOCK ON FUEL HOSE, 14"	1
10	AI1837-00	SEMS SCREW, 8-32 X 3/4"	2	23	AI2294-00	0.625IN QC FEMALE TO 0.625IN BARB, STRAIGHT	1
11	AI1701-00	FITTING, QUICK CONNECT TO 3/8 NPT	1	24	AI2295-00	0.625IN QC FEMALE TO 0.625IN BARB, RIGHT ANGLE	1
12	AI2289C-00	SILICONE BOX PLUG	1	25	AG1030-00	HOSE CLAMP, #12	2
13	AI2288C-00	SNAP IN LID SEAL	1	26	AI2154-00	PUSH IN MOUNT CABLE TIE	1

# INSTALLATION STEPS

## STEP 1

Disconnect Battery Disconnect the negative battery cable by loosening the terminal clamp and removing it from the battery post.

**IMPORTANT:** Failure to disconnect the battery for a minimum of 2 hours may cause the Check Engine Light to illuminate upon completion of the installation or subsequent operation. **DO NOT SKIP THIS STEP!**

Tool Needed: 10mm Wrench or Socket.



## STEP 2

Remove hood latch lever.

Tool Needed: T15 torx bit.



## STEP 3

Remove the push clips holding down the large plastic air diverter. Remove the large plastic air diverter and set aside.

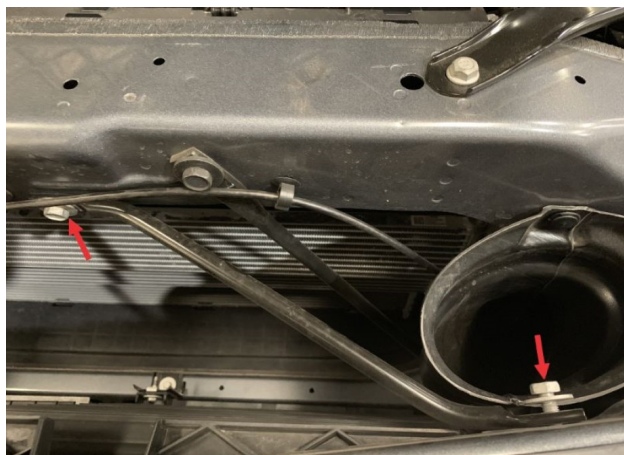
Tool Needed: Panel removal tool or similar.



## STEP 4

Disconnect and remove the support brace.

**Tool Needed:** 13mm Wrench or Socket.



## STEP 5

Remove the push clip holding the top of air inlet tube in place, and set the clip aside, separate from the other clips, as this one is unique.

**Tool Needed:** Panel removal tool or similar.



## STEP 6

Pull the stock air inlet tube up enough that it is no longer connected to the stock airbox, it is not necessary to remove the tube to install the S&B Filters Cold Air Intake.



## STEP 6B





## STEP 7

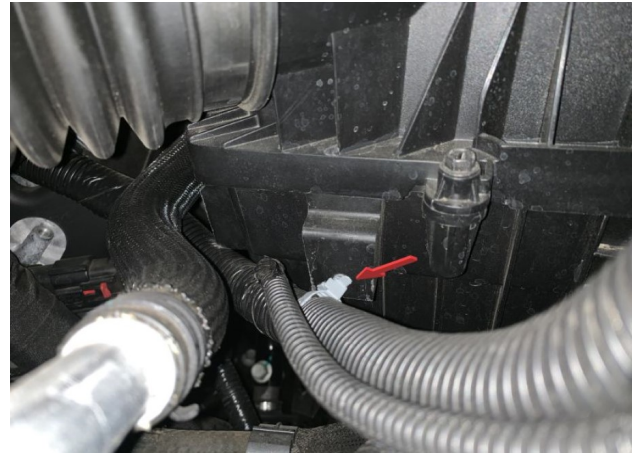
Carefully disconnect the large wire harness at the front of the air intake. The snap feature is designed to release under sufficient upward force; however, pulling and tilting the harness toward the rear of the vehicle will typically help disconnect the harness.



## STEP 8

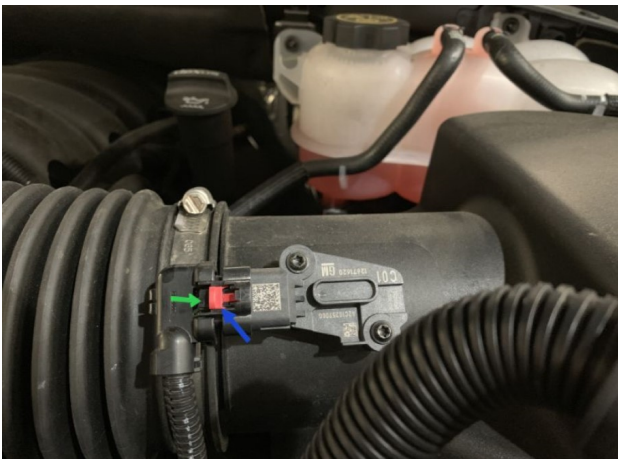
Disconnect the push clip (wrapped into the harness) from the stock air intake.

**Tool Needed:** Panel removal tool or similar.



## STEP 9

Disconnect the MAF Harness. Pull back on the red tab to unlock the connector. Press down on the black tab directly under the red tab and pull rearward to disconnect the connector.



## STEP 10

Disconnect the crankcase vent tube at both ends by pressing down on the grey quick disconnect buttons.



## STEP 11

Loosen the hose clamp next to the MAF sensor and also the hose clamp on the throttle body.

**Tool Needed:** 5/16 nut driver or Flat Blade Screwdriver



## STEP 12

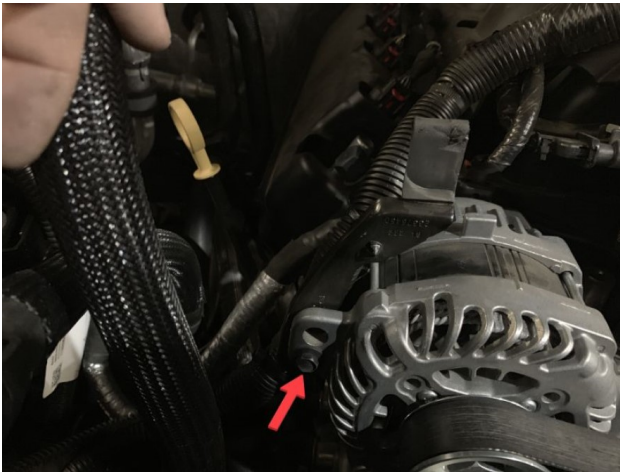
Remove the stock air intake tube. The stock intake tube is connected to a bracket attached to the alternator. The tube can be removed from the bracket by tilting the tube until it is vertical, then push toward the passenger side of the vehicle.

**Note:** Be sure to protect the throttle body from debris.



## STEP 13

Another option is to remove the bracket with the tube by cutting the zip ties attaching the wiring to the bracket and loosening the black screw with a 10mm socket. The bracket can then either be reinstalled or deleted.



## STEP 14

Loosen the nut with captive washer holding down the stock airbox. Set aside the nut for reuse.

**Tool Needed:** 10mm wrench or socket.





## STEP 15

Remove the stock air box by lifting the front high enough to clear the stud, and pulling the airbox forward, sliding the rear-facing prongs out of the bracket



## STEP 16

Find the S&B Air Intake Box (1) and the Silicone Inlet Seal (2). Install the Inlet Seal onto the Airbox.



## STEP 17

Attach the Harness Bracket (4) onto the airbox with the 1/4 x 20 Button Head Cap Screw (17).

**Tool Needed:** 5/32" or 4mm Hex Key.



## STEP 18

Install the Panel Grommet (16) into the Airbox. Install the Machined Aluminum Shoulder Washer (15) into the Panel Grommet.



## STEP 19

If desired, install the Silicone Box Plug (12) into the side of the airbox. The plug is designed to be able to be inserted from either the interior or exterior of the box; install according to preference



## STEP 19B



## STEP 20

Install the Mounting Prong Grommets (18) onto the rear prongs on the Airbox



## STEP 21

Install the Airbox into the vehicle, sliding the prongs into their holes and lowering the box onto the stud. Reinstall the nut with captive washer onto the stud from the inside of the S&B Airbox.

**Tool Needed:** 10mm wrench or socket, a ratcheting wrench is ideal for this step.





## STEP 22

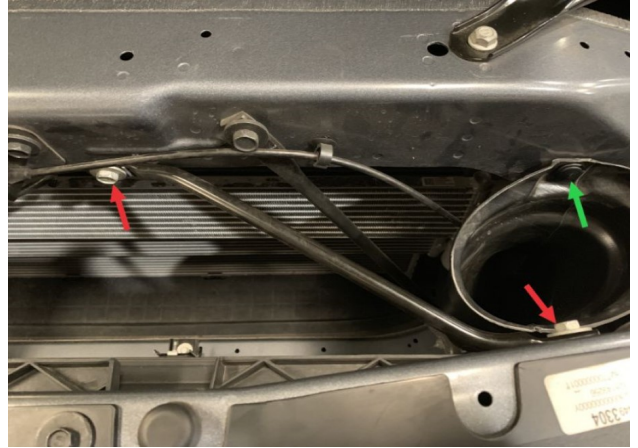
Insert the stock air inlet tube into the Inlet Seal on the S&B Air Box. The stop on the stock air inlet tube should be touching the seal when fully inserted. It may be helpful to guide the tube with one hand inside the airbox.



## STEP 23

Reattach the unique push clip for the air inlet tube and reinstall the support bracket.

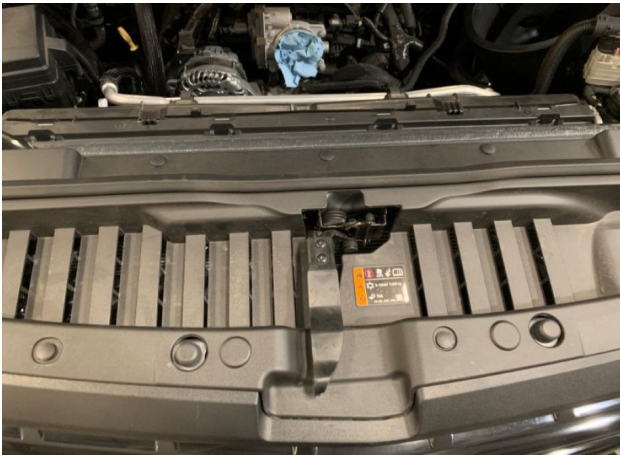
**Tool Needed:** 13mm Wrench or Socket.



## STEP 24

Reinstall the large plastic air diverter and hood latch lever.

**Tool Needed:** T15 Torx bit.



## STEP 25

Attach the large, forward wire harness to the Harness Bracket.



### STEP 26A

Insert the push clip into the small hole in the S&B Air Box.



### STEP 26B

Attach the Push In Cable Tie (26) into the upper hole in the side of the airbox and loosely secure the stock MAF Harness to keep it away from hot surfaces or moving parts. This tie will be tightened at the end of the installation.



### STEP 27

Remove the film from the S&B Clear Lid (14) and S&B Logo.



### STEP 28

Attach Snap-In Lid Seal (13) to the S&B Clear Lid.





## STEP 29

Install the Snap-In Lid Assembly into the S&B Airbox. The installation is significantly easier if the snap is slid into the curved section and its corners, first, then chase the snap around the profile of the lid, ending on the straight side.



## STEP 30

Find the S&B Air Filter (2) and snap the filter into the airbox. Similar to the clear lid, the installation is easiest when the snap is chased around the perimeter of the filter base, starting with the lowest point of the filter. Attach the #88 Hose Clamp if not already attached.



## STEP 31

Remove the MAF sensor from the stock airbox lid. Tool Needed: T20 Torx bit.



## STEP 32

Find the S&B Intake Tube (6) and HP1407. Install the MAF Sensor into the S&B Intake Tube using the MAF Gasket (9), MAF Pad (8), and supplied screws (X). Take care that the MAF pad and sensor are oriented correctly on the MAF boss on the tube.

**Tool Needed:** Philips Head Screwdriver





### STEP 33

Screw the Quick Disconnect Adapter (11) into the Intake Tube (6) until hand tight, then use a crescent wrench and tighten it another one to two complete turns. There will likely still be some threads showing after tightening the proper amount. This is normal and will not impact the performance of the intake. Do not tighten more than instructed or the fitting will become cross-threaded.

**Tool Needed:** 3/4 Inch Wrench

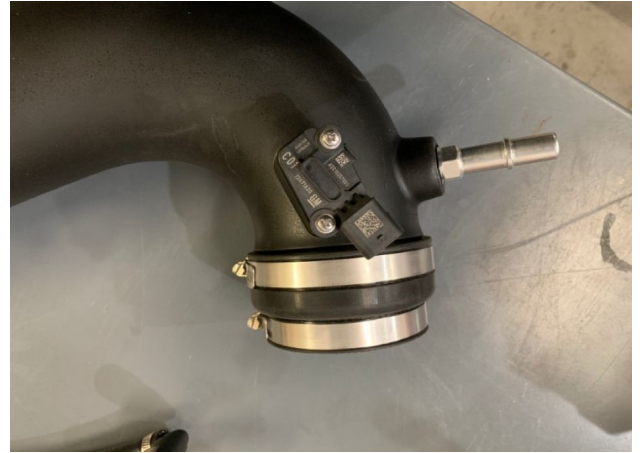
**IMPORTANT: Do not over tighten, as the Quick Connect Fittings can break or the threaded inserts may strip!**



### STEP 34

Attach the Step Coupler (5) to the S&B Intake Tube using the supplied #72 Hose Clamp (20) and #60 Hose Clamp (19), leave the throttle body side loose for now.

**Tool Needed:** 5/16 nut driver or similar.



### STEP 35

Attach the MAF Harness Extension Cable (8) to the MAF sensor.



### STEP 36

Snap-in a Push-In Cable Tie (26) into the insert on the back of the intake tube. Loop the cable tie into itself and feed the MAF Harness Extension Cable through it



### STEP 37

Install the intake tube into the vehicle, first mounting the coupler onto the throttle body, then swinging the tube down into the filter flange. Tighten all hose clamps.

**Tool Needed:** 5/16 nut driver or similar.



### STEP 38

Connect the MAF Harness Extension Cable to the stock MAF Harness and tighten the Push-In Cable Tie.



### STEP 39

Find the Lock on fuel hose (22) Right Angle Quick Disconnect (24) Straight Quick Disconnect (23) and #12 Hose Clamps (25). Assemble the parts, as shown, with the hose arcing forward and Right Angle Quick Disconnect pointed upward. Using this configuration will prevent the natural curvature of the hose from interfering with the installation.



## STEP 40

Install the Hose Assembly from Step 39. Install the straight end connector to the engine and right-angle connector to the intake tube



## STEP 41

Reconnect the Battery connections. Inspect your installation, ensure the kit is properly positioned and all fasteners are secure.



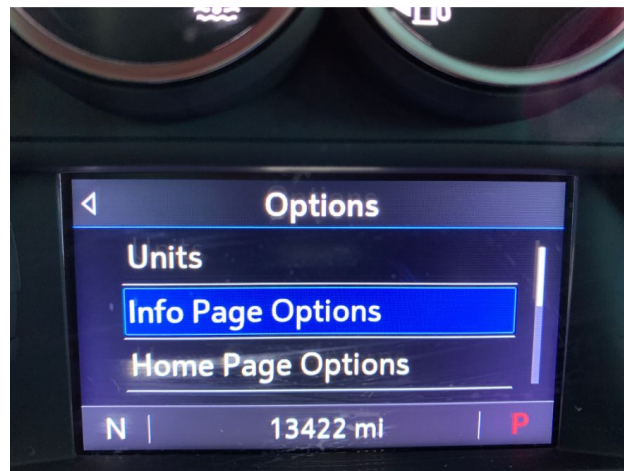
## STEP 42

To prevent the following message from displaying, the Air Filter Life system will need to be disabled.



## STEP 43

Navigate to the Options section of the Driver Information Center, and select the Info Page Options.





#### STEP 44

Ensure that the Air Filter Life has a green check mark next to it.



#### STEP 45

Navigate to the Info section of the Driver Information Center, and scroll down to the Air Filter Life section. Press the wheel in to select the Menu for the Air Filter Life, and select Disable.



#### STEP 46

The screen should now display "Disabled", as shown. The installation is now complete.



## Performance Testing

- Engage parking brake and start your engine. Listen for abnormal noises. If an air leak is detected, re-inspect hoses and connections as they may need to be repositioned and tightened.
- S&B FILTERS recommends that you keep your OE intake system in the event it is required in the future.
- In order to maintain your warranty, all connections and components must be checked periodically for alignment and for proper tension on all connections. Failure to do so may void your warranty.
- Use only S&B FILTERS cleaning and oil products to service your filter. Using any other brand oil and or cleaners on your S&B air filter may void your warranty.

## Warning!

If your vehicle has a Vehicle Emission Control Information decal affixed to the factory airbox, a new replacement label must be obtained and installed in a readily visible position in the engine compartment in order to remain CARB compliant. Failure to do so will prevent the vehicle from passing a smog check. Replacement labels can be ordered from your local dealership. Regulations state that the VECI label shall not be affixed to any equipment which is easily detached from the vehicle. Label placement, under the hood on a painted surface is recommended.