

# INSTALL INSTRUCTIONS FOR 75-5061-1

**PART#: 75-5061-1 / 75-5061-1D**



PRINT

## Vehicle Application

YEAR: 2009 - 2015

MAKE: Chevrolet/ GMC

MODEL: 2500HD / 3500HD

ENGINE: 6.0L Mechanical Cooling Fan

### Note:

This intake kit may not fit with the following Aftermarket Parts installed:

- Body Lift or Lowering Kit
- Custom Hood
- Throttle Body Spacer / Upgrade

**Tools Required**

 Support

- 10 mm socket or wrench
- 3/16" hex socket or key\*
- 5/16" drill bit and drill\*
- 5/16" nut driver or flat blade screwdriver
- 1/4" nut driver or flat blade screwdriver
- Phillips screwdriver
- 9/16" wrench
- plastic trim tool or flat blade screwdriver
- \*If equipped with pressure sensor

**Note:** Approximate Install Time: 1 Hr 00 Mins.

## **S&B Filter Maintenance**

Pending

KF-1062 ([https://www.sbfilters.com/replacement-filters/filters-sb-intakes/kf-1062?variant\\_id=213](https://www.sbfilters.com/replacement-filters/filters-sb-intakes/kf-1062?variant_id=213)) Cotton Cleanable : If the enclosed filter is RED, it came pre-oiled from the factory. Click here ([https://www.sbfilters.com/replacement-filters/filters-sb-intakes/kf-1050?variant\\_id=235](https://www.sbfilters.com/replacement-filters/filters-sb-intakes/kf-1050?variant_id=235)) for exact oil amount required for cleaning.

KF-1062D ([https://www.sbfilters.com/replacement-filters/filters-sb-intakes/kf-1062?variant\\_id=214](https://www.sbfilters.com/replacement-filters/filters-sb-intakes/kf-1062?variant_id=214)) Dry Extendable : If the enclosed filters is WHITE, it is a disposable filter and should be discarded once it reaches capacity. This filter does not require oil.

## **CARB Status - N/A**

Pending

## **Before You Start**

- Please read the entire product guide before proceeding.
- Ensure all parts are present.
- If you are missing any of the components, call our customer support at (909) 947-0015.
- Do not work on your vehicle while the engine is hot.
- Make sure the engine is turned off and the vehicle is in Park or the Parking Brake is set.

## **Related Products**

Pending

- Cotton Cleanable Filter (KF-1062 ([https://www.sbfilters.com/replacement-filters/filters-sb-intakes/kf-1062?variant\\_id=213](https://www.sbfilters.com/replacement-filters/filters-sb-intakes/kf-1062?variant_id=213)))
- Dry Extendable Filter (KF-1062D ([https://www.sbfilters.com/replacement-filters/filters-sb-intakes/kf-1062?variant\\_id=214](https://www.sbfilters.com/replacement-filters/filters-sb-intakes/kf-1062?variant_id=214)))
- Cleaning & Oiling Kit (88-0008 (<https://www.sbfilters.com/cleaning-kits/precision-ii-cleaning-oil-kit>))
- Air Filter Wrap (WF-1031 (<https://www.sbfilters.com/filter-wraps/wf-1031>))

## **Performance Testing**

- After your installation is complete engage parking brake and start your engine. Listen for abnormal noises. If an air leak is detected, re-inspect hoses and connections as they may need to be repositioned and tightened
- S&B FILTERS recommends that you keep your OE intake system in the event it is required in the future.
- In order to maintain your warranty, all connections and components must be checked periodically for alignment and for proper tension on all connections. Failure to do so may void your warranty.
- Use only S&B FILTERS cleaning and oil products to service your filter. Using any other brand oil and or cleaners on your S&B air filter may void your warranty.

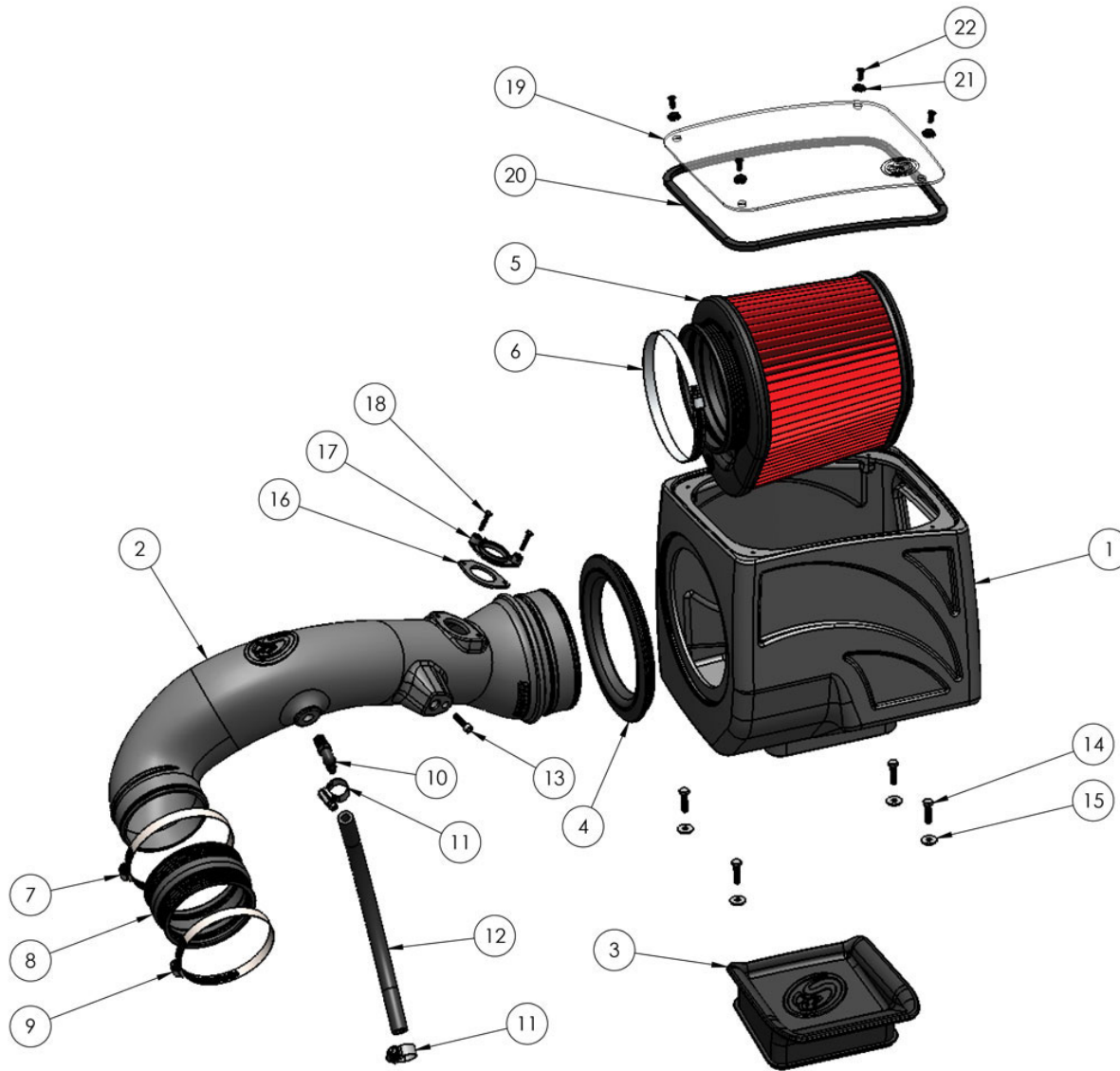
## **Warning!**

If your vehicle has a Vehicle Emission Control Information decal affixed to the factory airbox, a new replacement label must be obtained and installed in a readily visible position in the engine compartment in order to remain CARB compliant. Failure to do so will prevent the vehicle from passing a smog check. Replacement labels can be ordered from your local dealership. Regulations state that the VECI label shall not be affixed to any equipment which is easily detached from the vehicle. Label placement, under the hood on a painted surface, is recommended.

## **Emission Standard**

The California Air Resource Board (CARB) requires that an E.O. Identification label be applied to the vehicle in order to pass a smog check inspection when a Performance Intake Kit has been installed. You must place the E.O. Label provided on or near the intake kit after installation so that a smog check technician can easily verify the E.O. Number. Check the status of the exemption process by looking up a specific part number at [www.sbfilters.com](http://www.sbfilters.com). The CARB Exemption number and/or status is listed under the Product Details section for each part number. If the status shows as "Pending," CARB has yet to issue an exemption but the product has been submitted. Products that have not been issued an E.O. number are street legal in most states, but may not be used on emission controlled vehicles in the state of California and are for off-road use only. If you purchased your kit from S&B Filters directly, we will automatically mail you your Exemption Sticker when it is issued to us. If you purchased your kit from an authorized S&B Filters Dealer, log onto our web site and register to receive your Exemption Sticker.

## **EXPLODED VIEW:**



ITEM NO.	PartNo	DESCRIPTION	QTY.
1	AL1235B-00	BOX	1
2	AL1350-00	TUBE	1
3	AI1700C-00	BOX PLUG	1
4	AI1689C-00	BOX/TUBE SEAL	1
5	KF-1062	FILTER	1
6	AG1011-00	HOSE CLAMP, #88	1
7	AG-1009-00	HOSE CLAMP, #72	1
8	AI1542C-01	STEP COUPLER, 4.19" ID x 3.90" ID x 2.28" LG	1
9	AG1018-00	HOSE CLAMP, #64	1
10	AI1307-00	HOSE BARB, 90°, 3/8" ID X 1/4 NPT	1
11	AG1013-00	HOSE CLAMP, #6	2
12	AI1572-01	SILICONE TUBE, 12"	1
13	AI1570-00	SCREW, 1/4-20 x 7/8"	1
14	AI1415-00	SCREW, M6 x 25mm	4
15	AI1535-00	WASHER, M6	4
16	AI2266-00	MAF GASKET	1
17	AI2265-00	MAF ADAPTER	1
18	AI2328-00	SCREW, #8-32 x 7/8"	2
19	AI1691-00	Lid	1
20	AI1636-03	Lid Seal	1
21	AI2057-00	#10 COUNTERSUNK WASHER	4
22	AI2005-00	SCREW, #10-24, BLACK	4

## INSTALLATION STEPS



## **STEP 1**

With the ignition switched off and the parking brake set, disconnect the negative battery cable from the battery or batteries if you have more than one.

**IMPORTANT: Failure to disconnect the battery for a minimum of 2 hours may cause the Check Engine Light to illuminate upon completion of the installation or subsequent operation.**

**DO NOT SKIP THIS STEP!**

---



## **STEP 2**

Remove the engine cover by lifting it up out of the grommets, then pull towards the front of the vehicle.



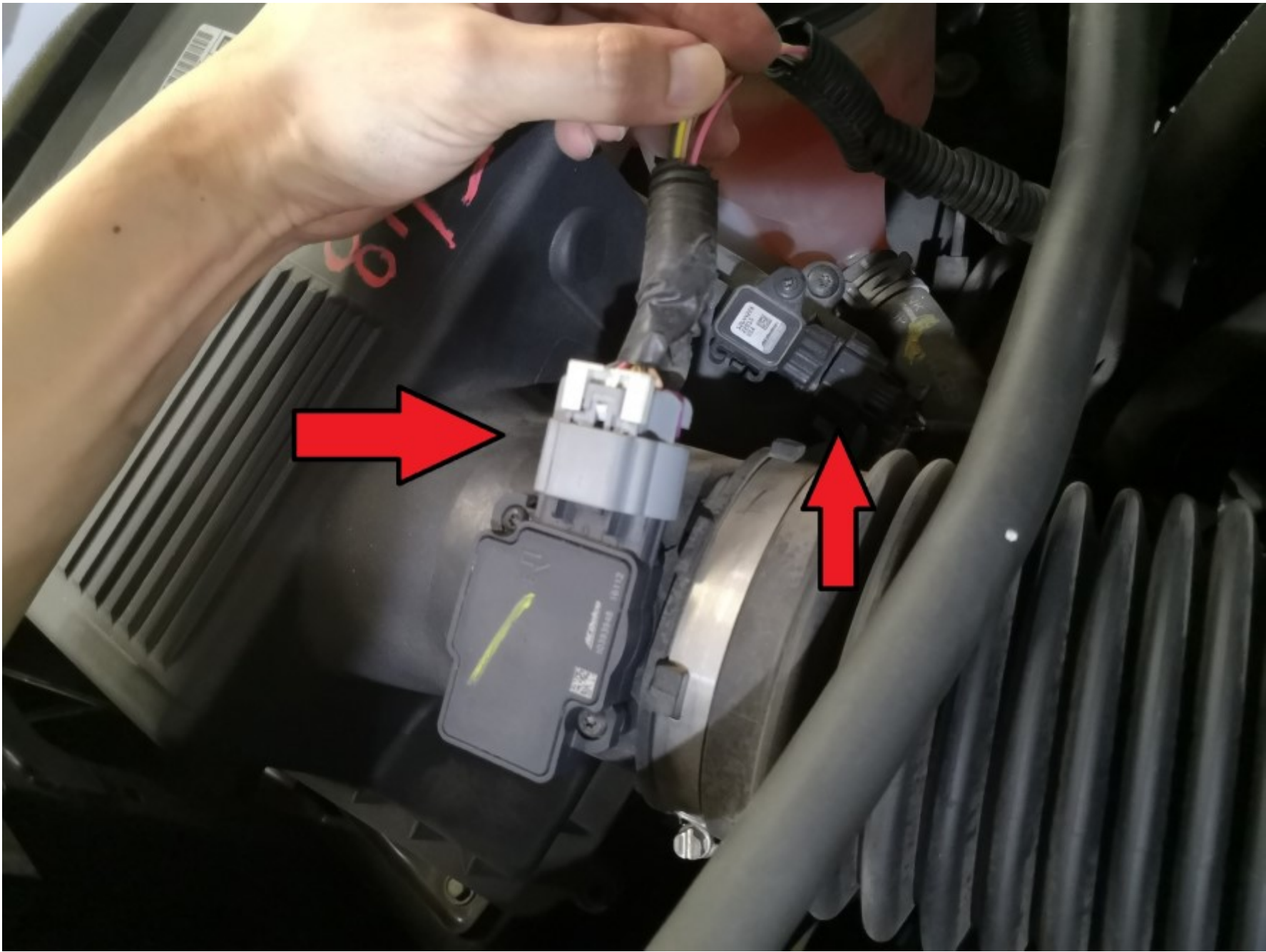
**STEP 3**

Disconnect the crankcase vent tube from the intake resonator by gently pulling it out.



## **STEP 4**

Disconnect the other end of the vent tube from the engine by sliding the locking tab over and pulling the tube to remove it.



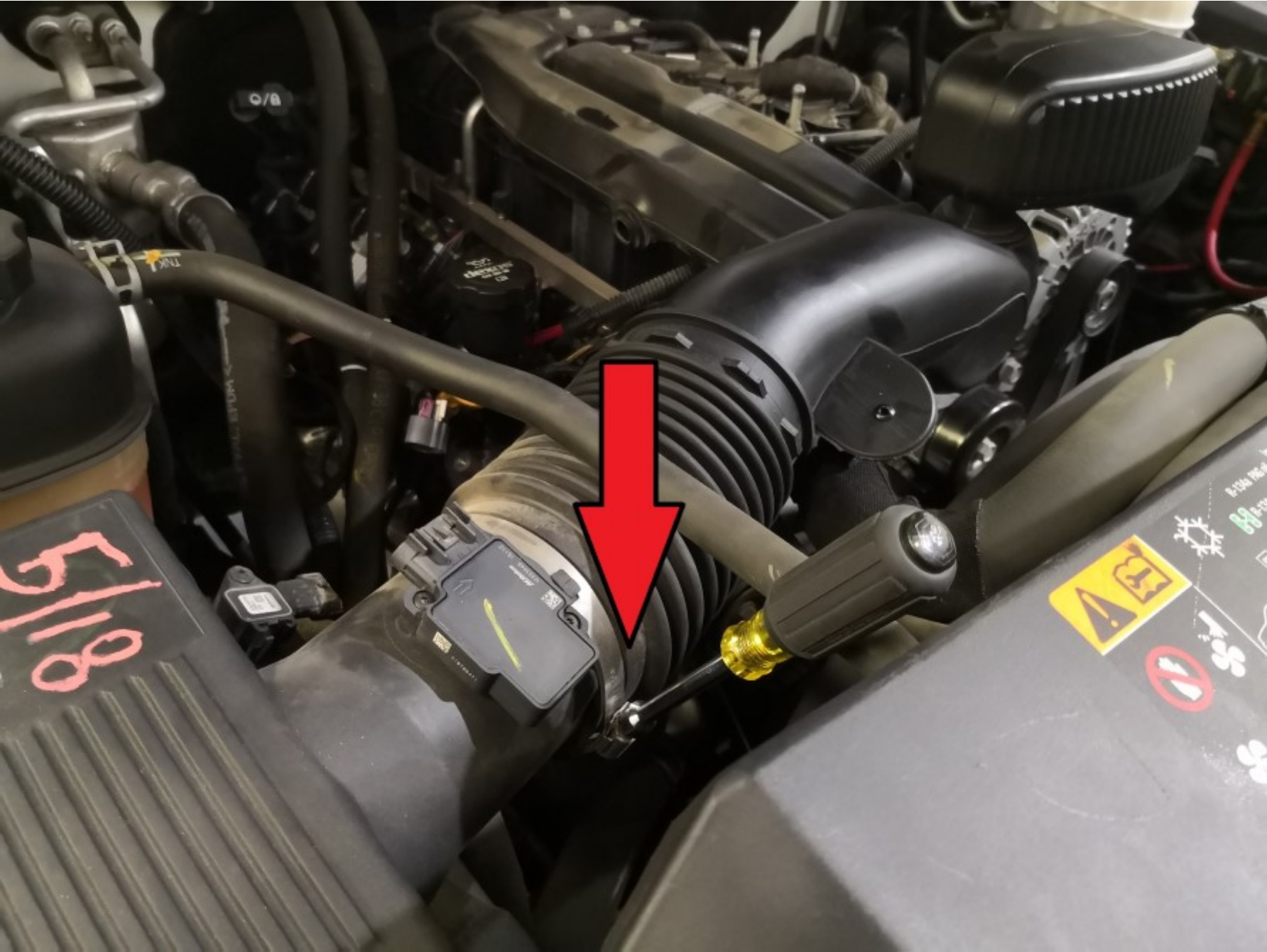
## **STEP 5**

Disconnect the MAF sensor harness connector and the pressure sensor harness connector (if equipped).



**STEP 6**

Loosen the hose clamp connecting the intake tube to the throttle body.



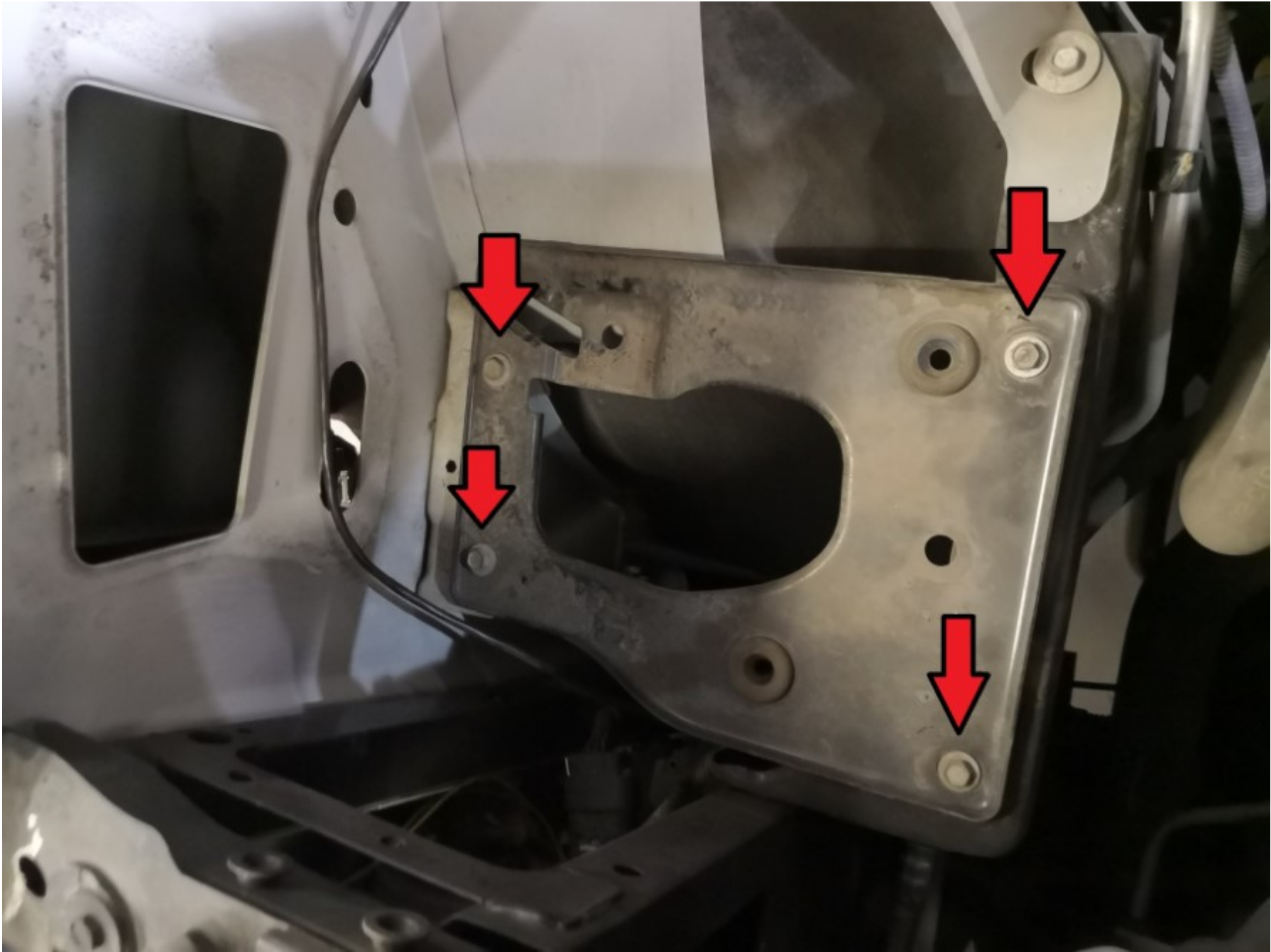
## **STEP 7**

Loosen the hose clamp connecting the intake tube to the air cleaner assembly.



## **STEP 8**

Using a suitable tool, gently pry the intake tube off the retainer clip on the coolant hose. Remove the intake tube.



**STEP 9**

Remove the airbox by pulling it up out of the grommets, then remove the four screws securing the metal tray. Remove the metal tray.



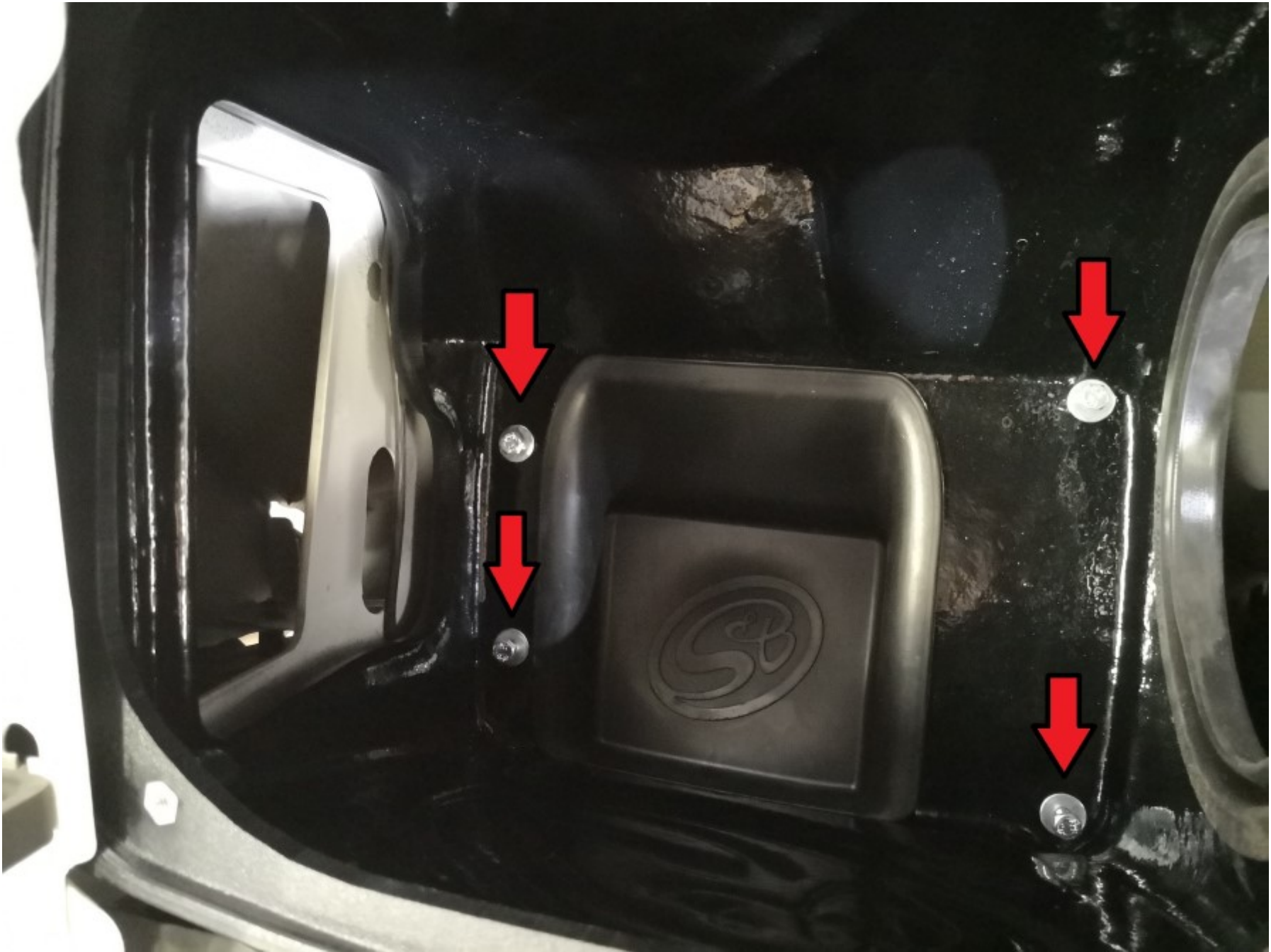
## **STEP 10**

For the coldest intake air possible, install the silicone box plug by pushing it in from inside the airbox. It can be removed if maximum airflow is desired more than the coldest intake air temperature.



## STEP 11

Install the silicone tube seal into the airbox by pushing it into the circular opening.



**STEP 12**

Install the airbox into the vehicle using the four M6 x 25 mm screws and washers.



## **STEP 13**

Remove the MAF sensor from the OE airbox using the T15 Torx key provided. Remove the pressure sensor (if equipped).



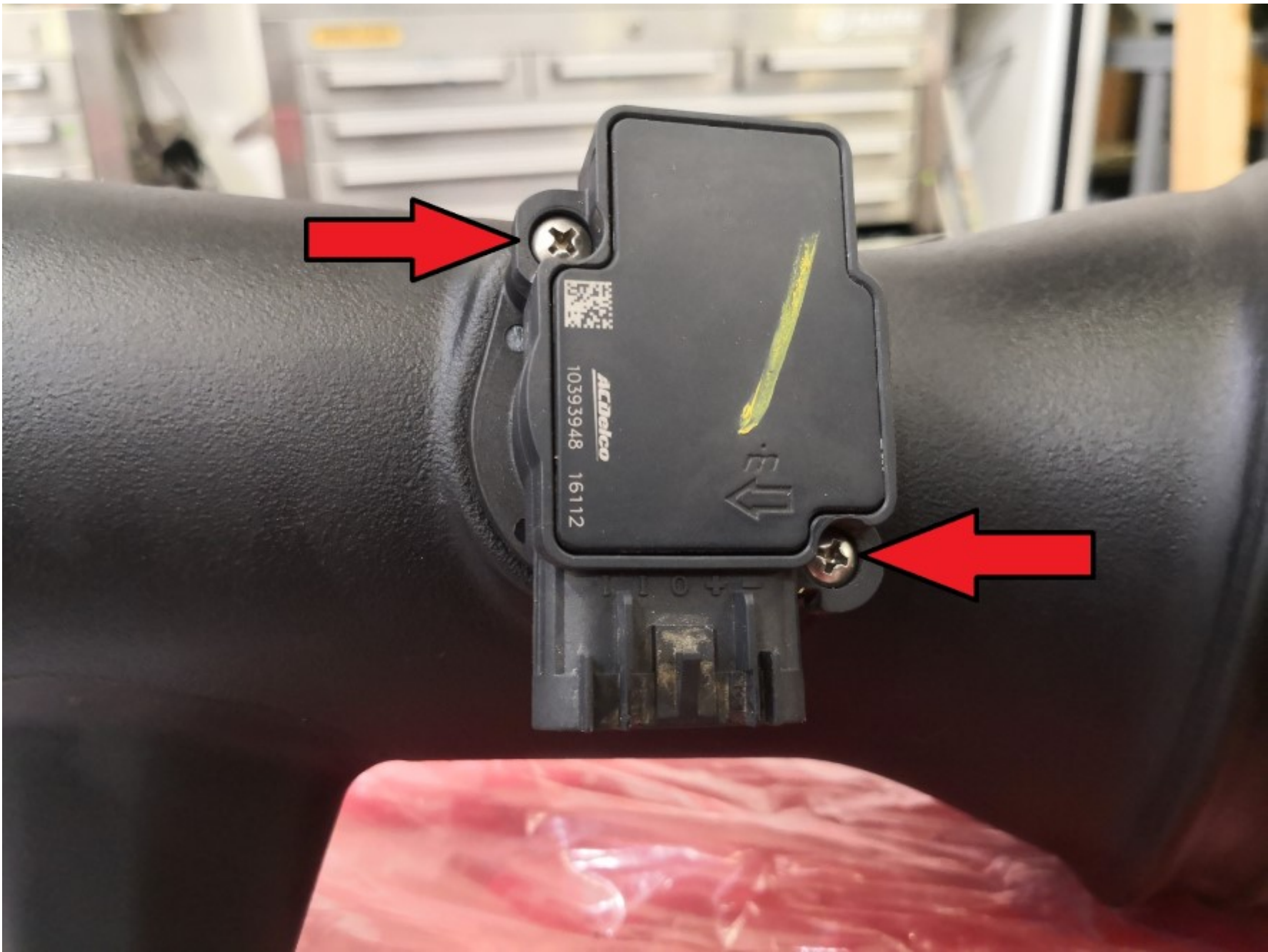
**STEP 14**

**ONLY IF equipped with a pressure sensor,** drill out the hole in the intake tube for the pressure sensor using a 5/16" drill bit. Make sure the drill bit is centered, do not damage the sides of the hole where the pressure sensor o-ring makes contact. Thoroughly clean the inside of the tube of all debris. Install the pressure sensor using the 1/4"-20 x 7/8" socket head screw provided.



**STEP 15**

Install the plastic MAF mounting adapter on to the MAF sensor. Then, install the foam gasket. The shape of the foam gasket should match the adapter, if not, try flipping it around.



## STEP 16

Install the MAF sensor with an adapter and gasket on to the intake tube using the #8-32 x 7/8" screws. Note: the foam gasket should be between the intake tube and the plastic adapter.



## **STEP 17**

Install the 90° hose barb into the tube finger tight. Then, using a wrench, tighten it one complete revolution, then tighten it further to the orientation shown.



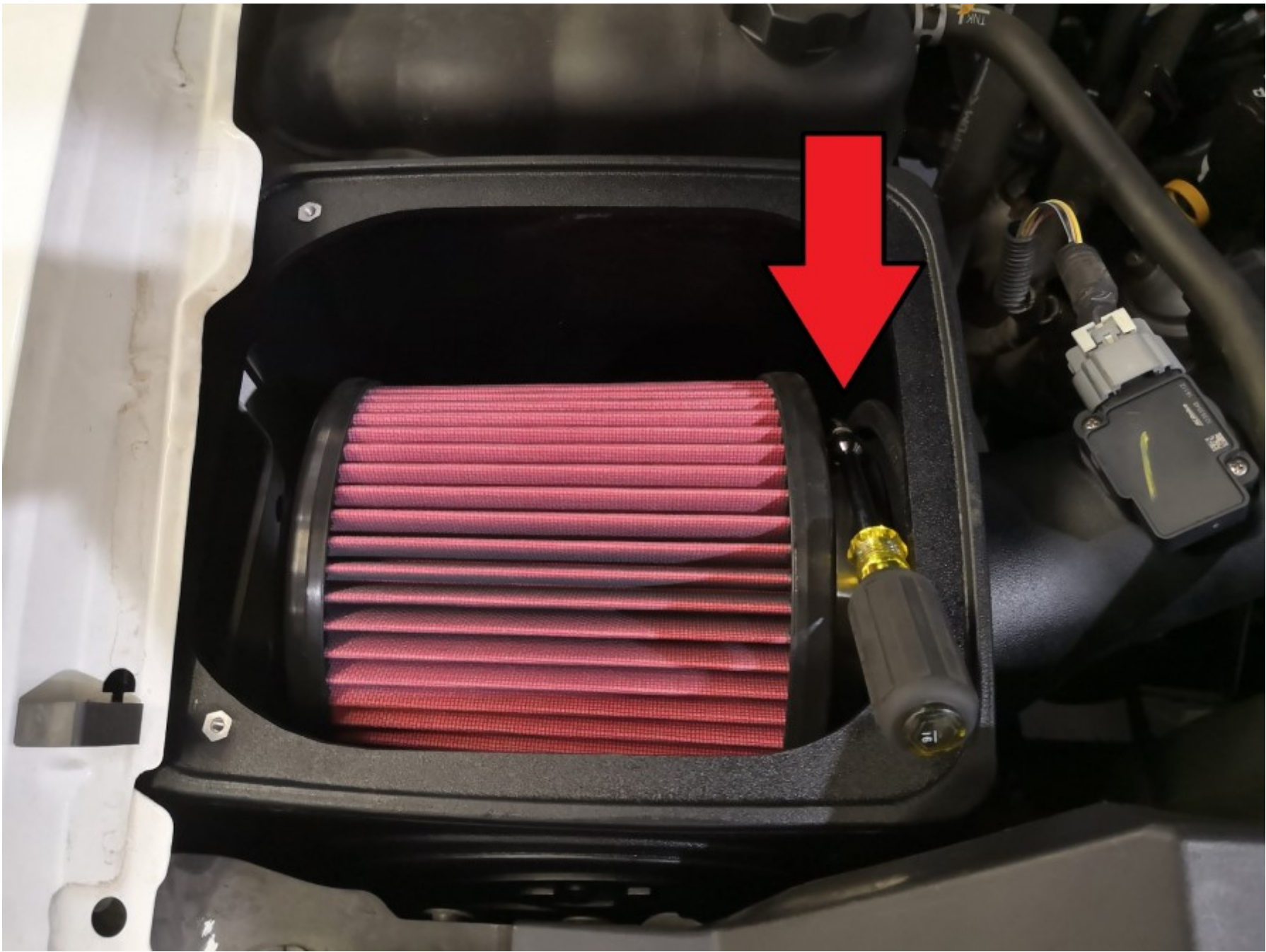
## **STEP 18**

Install the larger side of the silicone coupler on to the intake tube and install a size #72 hose clamp as shown. Leave it loose for now.



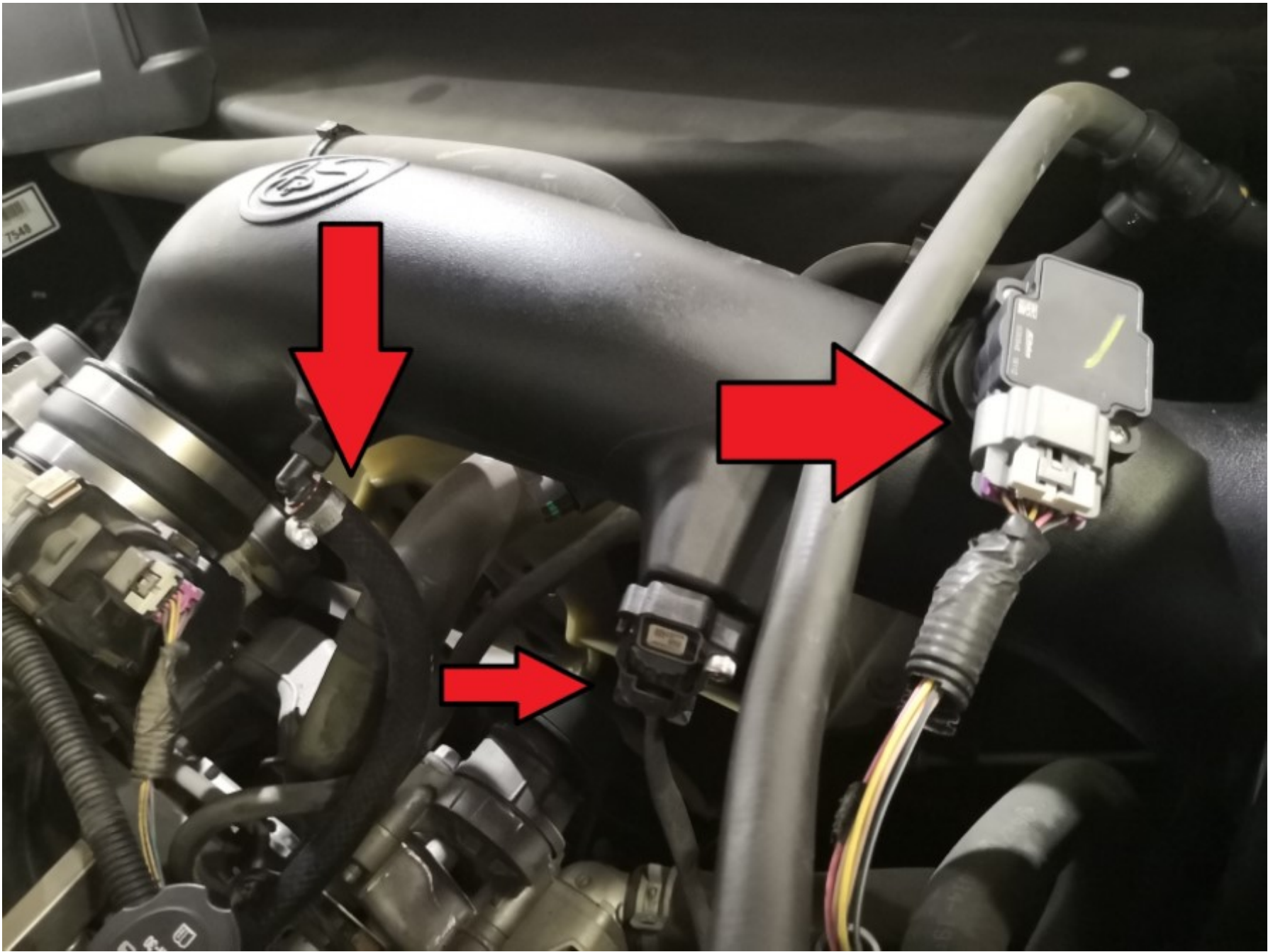
**STEP 19**

Install a size #64 hose clamp on the smaller side of the silicone coupler. Install the tube by pushing the filter end through the tube seal in the airbox, then pushing the silicone coupler on to the throttle body. Make any adjustments to the fit as necessary and tighten the hose clamps.



**STEP 20**

Install the filter by pushing it through the large opening in the airbox. You may have to squeeze the sides a little to get it through. Push the filter on to the end of the intake tube, you may have to rotate the filter to make sure it has clearance all around it. Tighten the size #88 hose clamp to secure the filter.



**STEP 21**

Slide the two size #6 hose clamps over the 12" long crankcase breather hose. Connect the hose to the 90° hose barb. Connect the other end to the crankcase fitting on the engine. Tighten the hose clamps. Reconnect the MAF sensor (and pressure sensor if equipped) electrical connector(s).



Remove the protective paper from the clear lid. Don't forget the small pieces inside the logo. Install the lid edge trim if desired, trim the ends to length if necessary. Install the four #10-24 screws with the plastic countersunk washers finger tight to secure the lid. Do not over-tighten. Reinstall the engine cover and reconnect the battery. Inspect the installation to make sure everything is secure, all fasteners and hose clamps have been tightened, sensors reconnected, etc. The installation is now complete.



