



Installation Instructions

VEHICLE APPLICATION

Year: 1999-06

Make: Chevy/ GMC/ Cadillac

Model: Silverado, Tahoe, Suburban, Sierra, Yukon, Escalade - 1500, 2500

Engine: 4.8L, 5.3L, 6.0L

NOTE: Will fit 2007 Silverado Classic

TOOLS REQUIRED

- 10mm Wrench & Socket
- T-20 Security Torx Wrench (Supplied w/ Kit)
- 4mm Allen Wrench
- 5/16" Nut Driver or Flat Blade Screwdriver
- Phillips Screwdriver, Pliers or Channel locks

S&B FILTER MAINTENANCE

Cleanable (KF-1035). If the enclosed filter is Red, it came pre-oiled from the factory. When serviced, apply (87g) of S&B oil to the main body of the filter and (17g) to the Power Stack (Top).

Disposable (KF-1035D). If the enclosed filter is White, it is a disposable filter and should be discarded once it reaches capacity. This filter (does not require oil). For more info on S&B's disposable filter, visit www.sbfilters.com.

NOTES

Kit may not fit with the following Aftermarket Parts installed:

- Body Lift or Lowering Kit
- Custom Hood
- Throttle Body Spacer/ Upgrade

CARB Status - Exempt

CARB EO #: D-590-5

Legal for use in CA or other states adopting CA emissions standards
See Page 3 for more info.

Before You Start

- Please read the entire product guide before proceeding.
- Ensure all components listed on page 4 are present.
- If you are missing any of the components, call our customer support at (909) 947-0015.
- Do not work on your vehicle while engine is hot.
- Make sure the engine is turned off and the vehicle is in Park or the Parking Brake is set.

1. With the ignition switched off and the parking brake set, disconnect the negative battery cable on the battery.



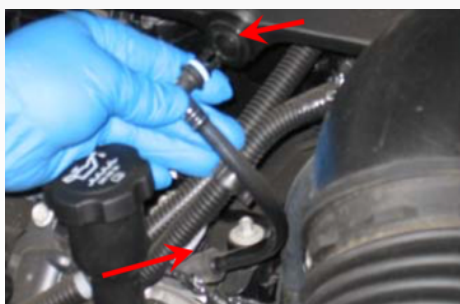
2. If equipped: Loosen the retaining bolt and pull up and out to remove the engine cover from the vehicle.



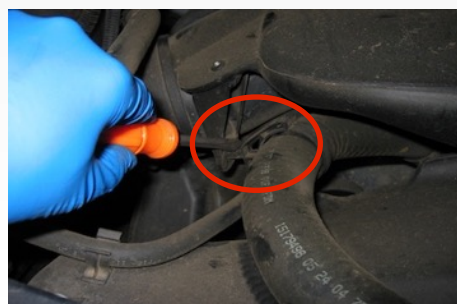
3. Disconnect the electrical connection to the MAF sensor at the OE air box.



4. If equipped: Pull the crankcase vent line from the OE intake tube and then from the engine along with the rubber connector and remove it from the vehicle.



5. Carefully pry the hose router clamp from the OE air intake tube.



6. Loosen the hose clamp at the throttle body and at the MAF sensor



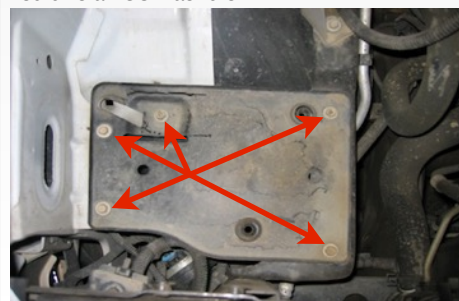
7. Pull the OE air box towards the engine and up to release it from the vehicle.



8. Loosen the hose clamp on the OE air box and remove the MAF sensor. Note: The direction of the air flow through the sensor.



9. Remove the OE tray from the vehicle. Four of these bolts (if long enough), can be used to secure the S&B air box to the vehicle. If too short, then use the supplied allen head screws and SS washers.



SEE EXPLODED VIEW ON PAGE 4



Installation Instructions (continued)

10. Attach the Filter Adapter (I) to the Air Box (G), secure using the supplied 5/16" SS Screw (H).



11. Place the air box assembly into the vehicle, align the four holes with the OE mounting locations and secure using either the OE bolts or the supplied allen head screws and SS washers.



12. Slide the Straight Adapter (F) over the MAF sensor's metal flange, secure using a #60 Hose Clamp (J).



13. Connect the MAF sensor assembly to the Filter Adapter (I) and secure using a #60 Hose Clamp (J).



14. Slide the Hump Adapter (L) over the MAF sensor's plastic flange and secure using a #60 Hose Clamp (J).



15. Slide the Throttle Body Adapter (O) over the Intake Tube (M) along with the #72 Hose Clamp (N), do not fully tighten at this time.



16. Place another #60 Hose clamp (J) on the Hump Adapter (L) then insert the small end of the Intake Tube (M) into the Hump Adapter. Then position the other end of the tube over the throttle body and firmly secure the #72 Hose Clamp (N), then secure the #60 Hose Clamp (J) at the hump adapter.



17. If equipped: Cut 1/4" off the end of the vent port. install the CCV Hose (R) onto the Intake Tube (M) vent port and then onto the engine port where the OE line was removed in Step 4. Secure with two #4 Hose Clamps (Q).



18. Carefully place the S&B Air Filter (D) into the Air Box (G), rotate the filter about a 1/4 turn for clearance and slide onto the flange and secure the #80 Hose clamp (E).



19. Remove the protective covering from the Clear Lid (C).



20. Place the Clear Lid (C) on the Air Box (G) and secure using the 10/24 SS Screws (A) and SS Washer (B).



21. Reconnect the MAF sensor electrical connection.



SEE EXPLODED VIEW ON PAGE 4



Installation Instructions (continued)

22. Re-Install the cover removed in Step #2.



23. Reconnect both batteries. Inspect your installation, make sure the kit is properly positioned and all fasteners are secure. Affix the CARB sticker near the intake kit. The installation is now complete.

RELATED ITEMS FOR YOUR PURCHASE

- Replacement Air Filter (Oiled) (S&B P/N: KF-1035)
- Replacement Air Filter (Dry) (S&B P/N: KF-1035D)
- Air Filter Wrap (S&B P/N: WF-1023)

**PRECISION II
FILTER CLEANING & OILING**



Order online today at www.sbfilters.com or through your local S&B distributor.
Part #: 88-0008

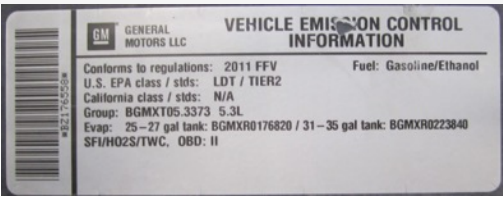
Installation Notes:

Performance Testing

- Engage parking brake and start your engine. Listen for abnormal noises. If an air leak is detected, re-inspect hoses and connections as they may need to be repositioned and tightened.
- S&B FILTERS recommends that you keep your OE intake system in the event it is required in the future.
- In order to maintain your warranty, all connections and components must be checked periodically for alignment and for proper tension on all connections. Failure to do so may void your warranty.
- Use only S&B FILTERS cleaning and oil products to service your filter. Using any other brand oil and or cleaners on your S&B air filter may void your warranty.

Warning!

If your vehicle has a Vehicle Emission Control Information decal affixed to the factory airbox, a new replacement label must be obtained and installed in a readily visible position in the engine compartment in order to remain CARB compliant. Failure to do so will prevent the vehicle from passing a smog check. Replacement labels can be ordered from your local dealership. Regulations state that the VEI label shall not be affixed to any equipment which is easily detached from the vehicle. Label placement, under the hood on a painted surface is recommended.



Emissions Standard

The California Air Resource Board (CARB) requires that an E.O. identification label be applied to the vehicle in order to pass a smog check inspection when a Performance Intake Kit has been installed. You must place the E.O. label provided on or near the intake kit after installation so that a smog check technician can easily verify the E.O. number. As of April 2009, S&B has never had a product where CARB denied an exemption request; however, the exemption process with CARB can take as long as 18 months. Check the status of the exemption process by looking up a specific part number at www.sbfilters.com. The CARB Exemption number and/or status is listed under the Product Details section for each part number. If the status shows as "Pending," CARB has yet to issue an exemption. Products that have not been issued an EO number are street legal in most states, but may not be used on emission controlled vehicles in the state of California and are for off road use only. If you purchased your kit from S&B Filters directly, we will automatically mail you your Exemption Sticker when it is issued to us. If you purchased your kit from an authorized S&B Filters Dealer, log onto our web site and register to receive your Exemption Sticker.

SEE EXPLODED VIEW ON PAGE 4



EXPLODED VIEW

[illegible]