



OMIX-ADA, Inc.

460 HORIZON DR. SUITE 400 | SUWANEE, GA 30024 | PHONE: 770-614-6101 | FAX: 770-614-6069 | info@omix-ada.com

81630.21 & 81630.22

All Terrain Flares 2014 Chevy Silverado

Components:

- 1. Front Flares (2)
- 2. Rear Flares (2)

Tools required:

- Utility knife
- #2 Phillips driver
- Socket wrench
- 13 mm Socket
- 6 mm Allen Wrench
- T-15 Torx bit
- Trim Removal Tool
- 1/16th inch Drill Bit
- Drill



Hardware List:

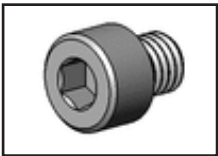
1. Cap Screw - Silver (40 pcs)



7. Plastic Square Tab (12 pcs)



2. Cap Screw - Black (40 pcs)



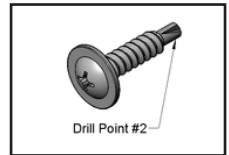
8. #8 x 3/4 Phillips Head Screw (8 pcs)



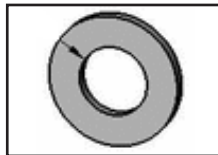
3. Locking Nut (40 pcs)



9. #8 x 5/8 Phillips Head Self-Tapping Screw (8 pcs)



4. Washer (40 pcs)



10. S-Clip (12 pcs)



5. Edge Trim (32 ft.)



11. #10 x 5/16 Phillips Screw (12 pcs)



6. Edge Trim Tool



Read all instructions thoroughly before installation.



OMIX-ADA, Inc.

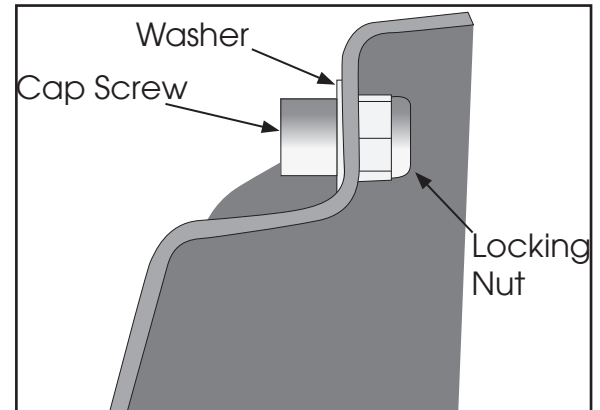


460 HORIZON DR. SUITE 400 | SUWANEE, GA 30024 | PHONE: 770-614-6101 | FAX: 770-614-6069 | info@omix-ada.com

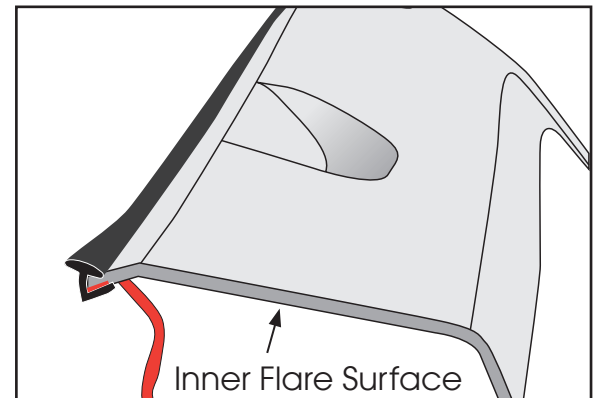
81630.21

All Terrain Flares 2014 Chevy Silverado

1. Install supplied Cap Screws, Washers, and Locking Nuts into each flare. Flares come with Cap Screws in both black and silver color for individual preference. Do not over-tighten.



2. Clean inside of top lip edge with rubbing alcohol. Install edge trim by removing red vinyl tape covering only a few inches at a time. Applying adhesive side of edge trim to inner side of flare. Install edge trim to the top edge of flare (the edge that contacts vehicle). Do not stretch trim while being applied. Trim excess from ends.



3. For easier access, turn front wheel outward.





OMIX-ADA, Inc.

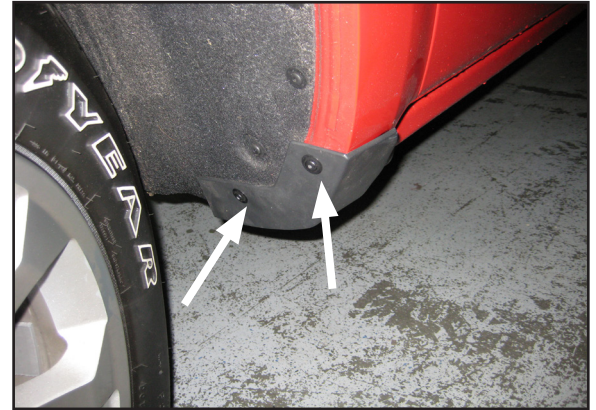


460 HORIZON DR. SUITE 400 | SUWANEE, GA 30024 | PHONE: 770-614-6101 | FAX: 770-614-6069 | info@omix-ada.com

81630.21

All Terrain Flares 2014 Chevy Silverado

4. Remove factory mud flaps at the rear of the front wheel well by removing the 2 factory installed screws using a T-15 Torx bit.



5. Firmly hold flare to vehicle. Reuse the 2 existing mounting holes and the supplied #8 x 3/4 phillips screws to fasten the rear portion of the flare.



6. Holding flare firmly against the vehicle, mark the hole location of the forward most hole in the flare.





OMIX-ADA, Inc.



460 HORIZON DR. SUITE 400 | SUWANEE, GA 30024 | PHONE: 770-614-6101 | FAX: 770-614-6069 | info@omix-ada.com

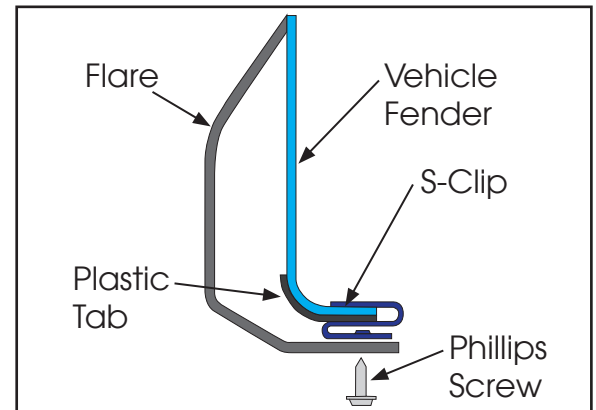
81630.21

All Terrain Flares 2014 Chevy Silverado

7. Gently pull flare away from vehicle and install plastic square tab and S-clip at marked location.



8. Refer to diagram; For proper installation of S-Clips, install S-Clip over inner lip edge of fender centered over plastic tab. Install flare using supplied #10 x 5/16 Phillips Screw. Insert through the hole in the flare and screw into S-Clip until tight. Moderate pressure against the flare, and minor adjustments of S-Clip position may be required for mounting holes to align.



9. Return flare to proper position, and install #10 x 5/16 phillips screw through flare into S-clip.





OMIX-ADA, Inc.

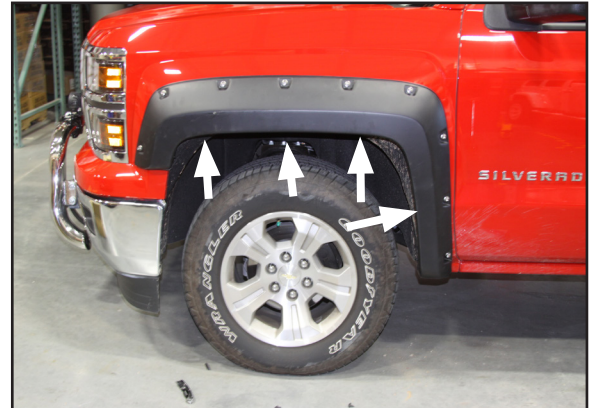


460 HORIZON DR. SUITE 400 | SUWANEE, GA 30024 | PHONE: 770-614-6101 | FAX: 770-614-6069 | info@omix-ada.com

81630.21

All Terrain Flares 2014 Chevy Silverado

10. Using remaining 4 holes in flare as reference, drill 1/16th" holes through fender at these locations. Then install the supplied #8 x 5/8 Phillips Head Self-Tapping screws through flares and into holes to complete installation of front flare. Repeat Steps 3-10 for opposite side.



11. Remove factory rear mud guards. Using T-15 Torx bit, remove 4 factory screws from lower front of rear wheel well.



12. Remove plastic mud guard and re-install the 2 screws indicated in the diagram.





OMIX-ADA, Inc.



460 HORIZON DR. SUITE 400 | SUWANEE, GA 30024 | PHONE: 770-614-6101 | FAX: 770-614-6069 | info@omix-ada.com

81630.21

All Terrain Flares 2014 Chevy Silverado

13. Using T-15 Torx bit, remove the 2 factory screws from mud guard at lower rear of rear wheel well.



14. Using trim removal tool, remove the 2 plastic rivets on underside of vehicle, behind rear wheel well. Remove mud guard.



14. Firmly hold rear flare to fender and install supplied #8 x 3/4 Phillips head screws through two lower-most holes in flare into existing mounting holes in fender.





OMIX-ADA, Inc.

460 HORIZON DR. SUITE 400 | SUWANEE, GA 30024 | PHONE: 770-614-6101 | FAX: 770-614-6069 | info@omix-ada.com

81630.21

All Terrain Flares 2014 Chevy Silverado

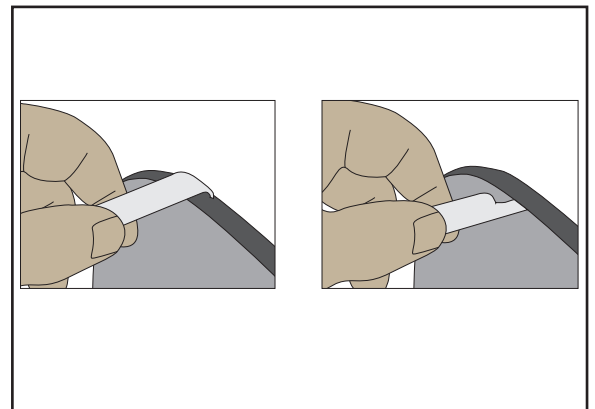
16. Hold flare firmly against vehicle and mark 5 remaining hole locations on the fender. Install the plastic square tabs at these locations



17. As with front flares, install S-Clip over inner lip edge of fender centered over plastic tabs. Install flare using supplied #10 x 5/16 Phillips Screws into S-Clips. Moderate pressure against the flare may be needed for mounting holes to align. Repeat steps 11-17 for opposite side.



18. To complete installation, use supplied edge trim tool to seat edge trim against vehicle with curved end; slide it under trim along vehicle fender. Use flat end of tool to seat trim against flare; slide tool between trim and flare.





OMIX-ADA, Inc.



460 HORIZON DR. SUITE 400 | SUWANEE, GA 30024 | PHONE: 770-614-6101 | FAX: 770-614-6069 | info@omix-ada.com

81630.21

All Terrain Flares 2014 Chevy Silverado

PAINTING:

1. Lightly sand flares with 320 grit sandpaper.
2. Remove all surface contaminants from flares using an approved grease and wax remover.
3. Wipe flares with a tack rag to remove any dust or dirt.
4. Apply two even coats of adhesion promoter to flares. Allow recommended flash time between coats. Let second coat dry for 15 minutes before primer application.
5. Apply an even coat of primer to flare surface (a high build primer is recommended).
6. Paint flares with an automotive grade paint (a flex additive must be added to paint).

OMIX-ADA® TECHNICAL SUPPORT

PHONE: M-F 8am - 5pm EST 1-800-449-6649 | EMAIL: techsupport@omix-ada.com

FOR WARRANTY INFORMATION VISIT: www.Omix-Ada.com