

# RUGGED

## OFF ROAD

### Step by step instructions and checklist:

Use the proper tools and safety equipment to perform all work. Torque all fasteners to proper specifications and double check work. Align your vehicle after installation.

25-19355

Ram 1500 2wd/4wd

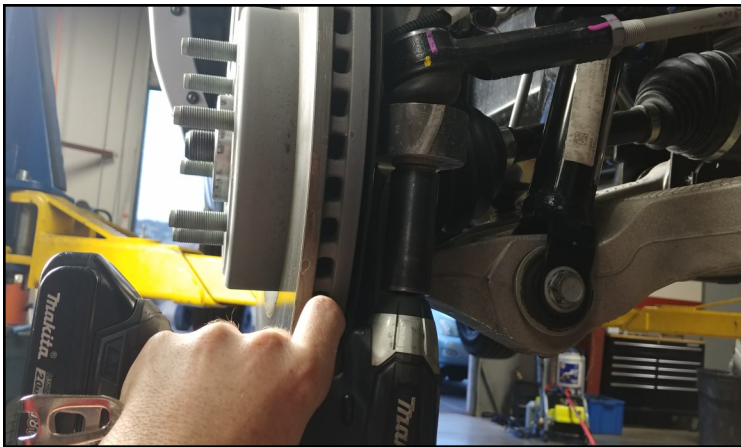
3.5" Lift



Remove the front wheels. Remove the ABS wire on the upper control arm, frame, and rubber brake line. Remove the metal brake line bracket at the frame.



Remove the axle nut from the hub.



Remove the tie rod end from the knuckle.

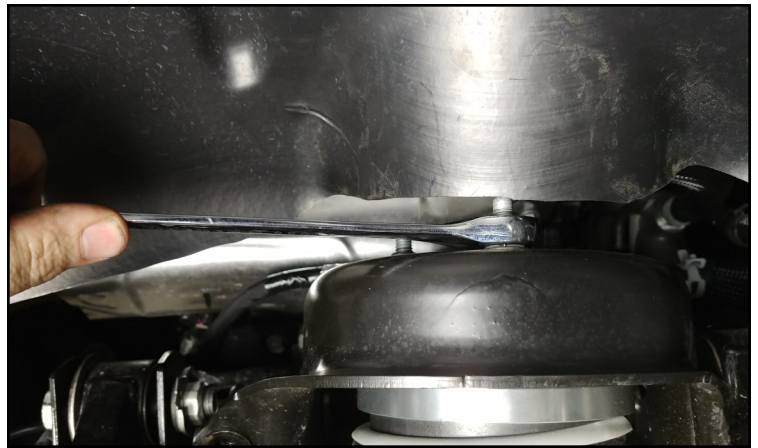


Remove the upper ball joint from the knuckle. Let knuckle hang out of the way. Do not stretch the ABS/ brake lines.

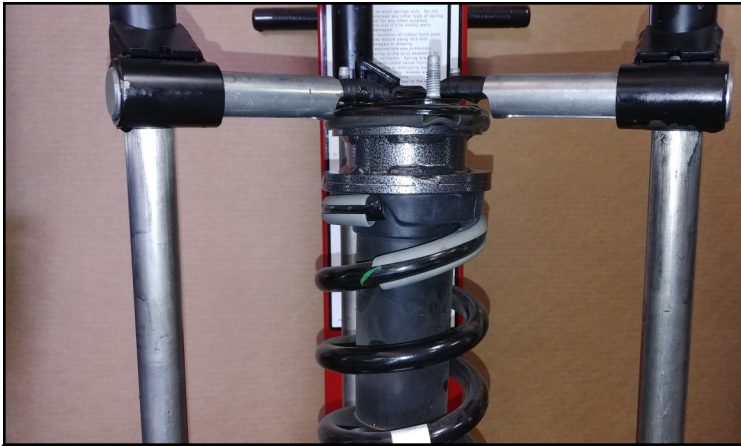




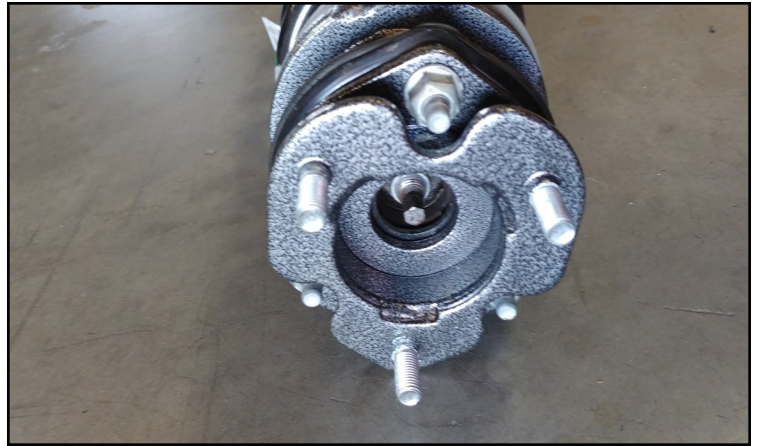
Remove the sway bar from the frame. Let hang out of the way.



Remove the lower strut hardware. Remove the upper strut hardware. Remove the strut from the vehicle.



Place strut in a spring compressor. Remove factory top hat. Install in between the top hat with rubber isolator and the factory plastic spring mount.



Install the strut extension to the strut using the factory nuts.

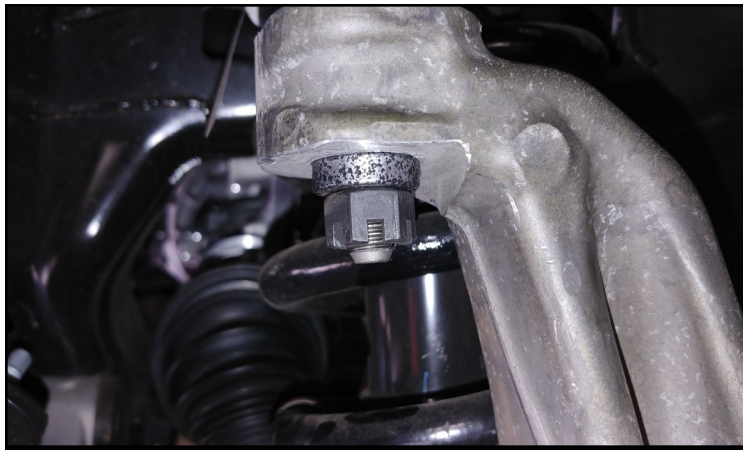


Remove the upper control arm from the vehicle. Assemble the aftermarket arms by installing the polyurethane bushings and sleeves. Use provided grease for the sleeves.



Install the upper control arms to the frame. Install the completed strut assembly to the frame using the provided hardware. Install the lower strut hardware.





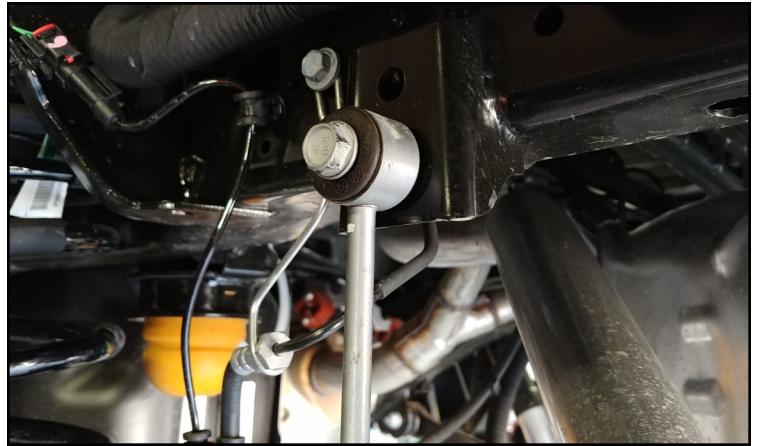
Install the upper ball joint to the knuckle using the supplied spacer and nut. Once tight, install the supplied cotter pin.



Install the brake line bracket onto the frame. Zip tie the ABS wire to the rubber brake line. Install the ABS wire into the clip on the rubber brake line. Reinstall the axle nut.



Reinstall the sway bar to the frame. Install the front wheels and lower the vehicle to the ground. Raise the rear of the vehicle. Remove the rear wheels.



Remove the ABS wire and brake line from the frame. Remove any wire harness from the rear pumpkin to gain slack. Remove the sway bar end link from the frame.



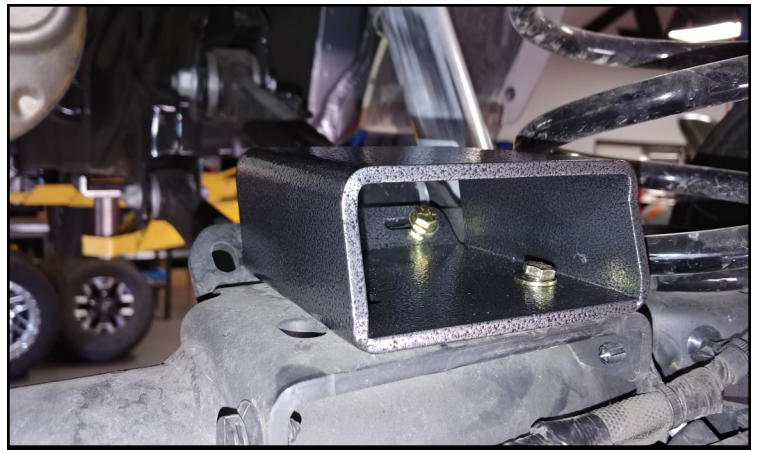
Loosen all control arms and track bar. Remove the lower shock hardware. Lower the axle down to remove the springs. Do not stretch the ABS, brake lines or any other harness.



Cut off the nipples from the spring isolator.



Install the spring spacer on top of the spring and isolator. Install into the frame. Raise the axle to hold everything in place. Install the lower shock, the sway bar end link, brake lines, ABS harness and any other harness that was removed.



Install the bump stop extensions using the provided hardware. Utilize the holes that line up with the axle. The driver and pass sides will use different holes. Install the rear wheels and lower the vehicle to the ground.

Make sure to tighten all components with rubber bushings on the ground with full vehicle weight on the tires. Have the alignment set.

### **Final Checks & Adjustments**

**Post Installation Warnings:** Once the vehicle is lowered to the ground, check all parts which have rubber or urethane components to ensure proper torque. Torque wheels to the manufacturers specs. Move the vehicle backwards and forwards a short distance to allow suspension components to adjust. Turn the front wheels from lock to lock and verify adequate tire, wheel, brake line, and ABS wire clearances. Test and inspect steering, brake and suspension components for tightness and proper operation. Inspect brake hoses and ABS lines for adequate slack at full extension. Failure to perform the post inspection checks may result in vehicle component damage and/or personal injury or death to driver and/or passengers. Test drive vehicle and re-check the torque of all fasteners.

### **Wheel Alignment/Headlamp Adjustment**

It is necessary to have a proper and professional wheel alignment performed by a certified alignment technician. Align the vehicle to factory or provided specifications. It is recommended that your vehicle alignment be checked after any off-road driving. In addition to your vehicle alignment, for your safety and others, it is necessary to check and adjust your vehicle headlamps for proper aim and alignment.

### **Vehicle Re-Torque and Safety Inspection**

Upon completion of all services and adjustments performed on your vehicle, and within 50 miles of driving, check to ensure that all fasteners and hardware are properly torqued to specification as noted in the vehicles factory service manual.

[www.ruggedoffroad.com](http://www.ruggedoffroad.com)