

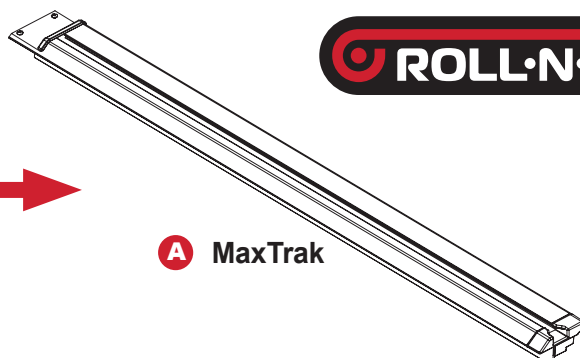
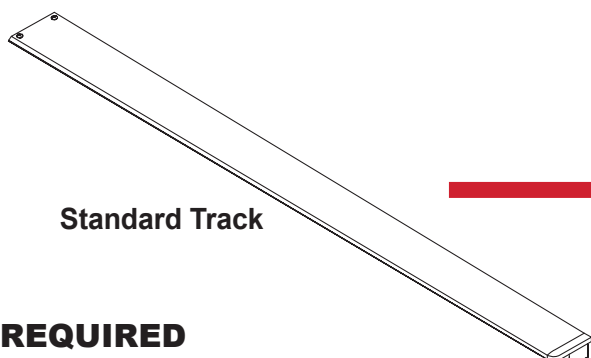
Standard Track To MaxTrak

INSTALLATION SHEET

Any damaged or missing parts?

Parts will be shipped to you directly.

Call 1-800-952-7655 Mon-Fri 8am - 5pm EST
or email info@rollnlock.com



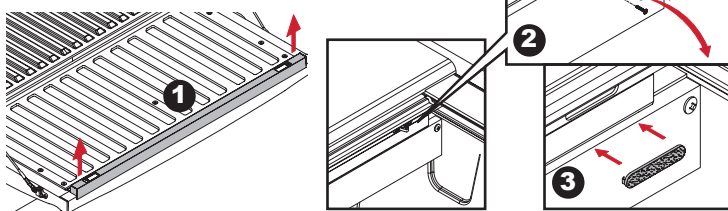
TOOLS REQUIRED

- Phillips screwdriver
- Tape measure

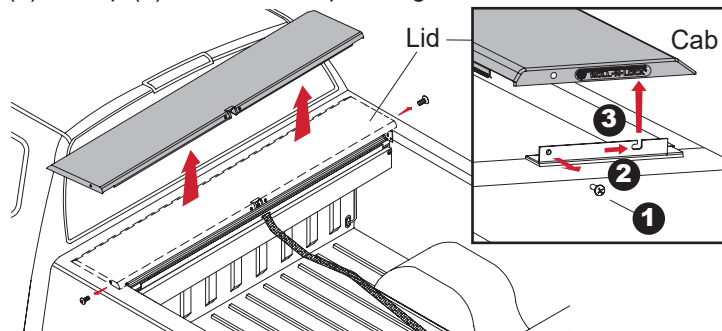
HARDWARE & HANDLE GASKET INCLUDED WITH TRACKS

REMOVING STANDARD TRACKS

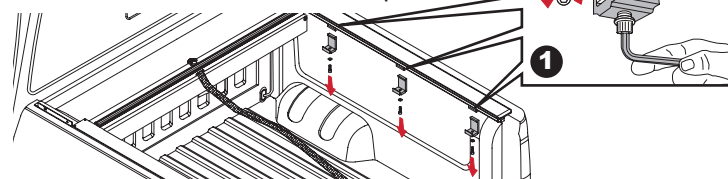
- 1** (1) If your cover uses a tailgate extrusion, you will need to remove the tailgate extrusion from the tailgate when replacing your standard tracks with Maxtrak. (2) Remove the tailgate hook latch on driver and passenger side. (3) Snap in the supplied hook latch cap on driver and passenger side.



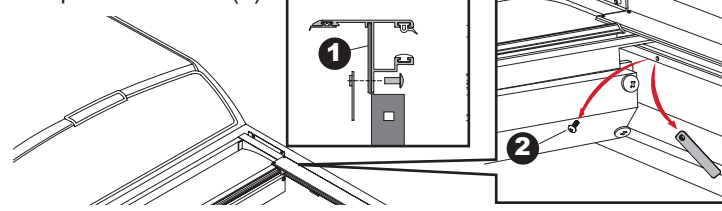
- 2** Remove screws with a Phillips screwdriver and set aside (1). Then remove lid on housing by pushing toward cab (2) and up (3) on driver and passenger sides.



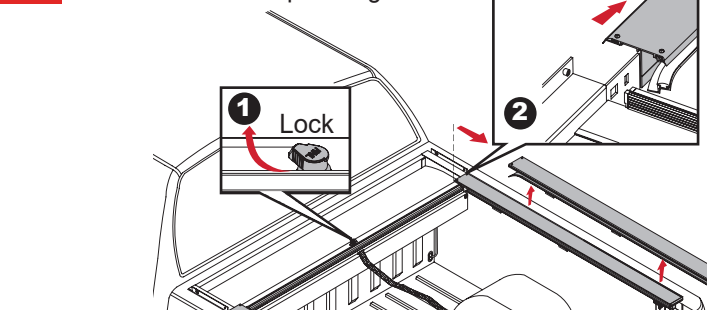
- 3** Remove socket cap screw from clamps with supplied Allen wrench (1). **Note:** Clamp configuration may vary by application. **Note:** Do not allow the cover to retract without the lid in place.



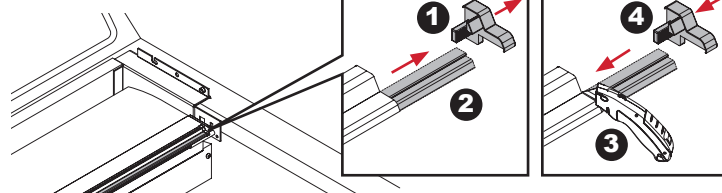
- 4** Remove tracks from housing stem (1) on driver and passenger side by removing cargo nut and screw using a Phillips screwdriver (2).



- 5** (1) Turn lock to 10 o'clock. (2) Remove tracks from housing stem on driver and passenger side.

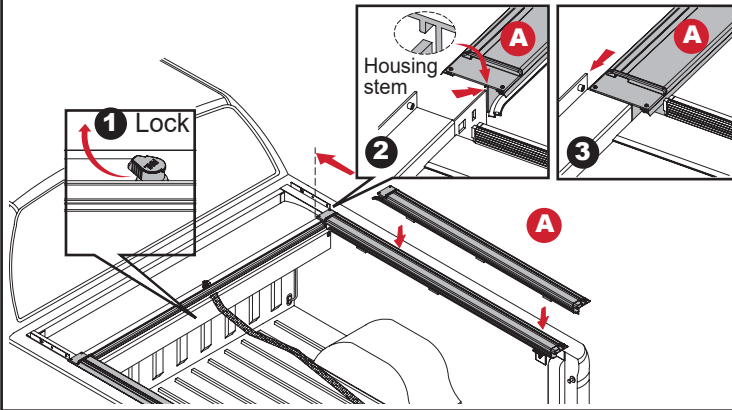


- 6** (1) Remove existing handle flange cap on passenger side. (2) Slide existing handle flange gasket out from handle and replace with supplied gasket. Slide the gasket through the handle to the driver side flange cap. (3) Trim gasket flush with the end of the handle flange. (4) Press handle flange cap back onto handle.

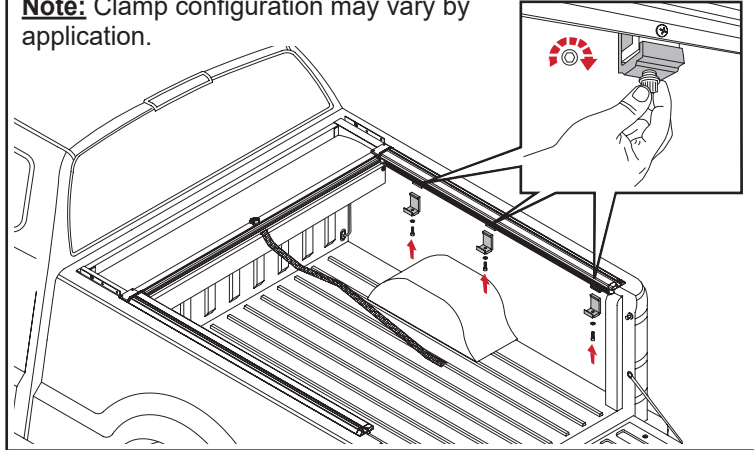


INSTALLING MAXTRAK

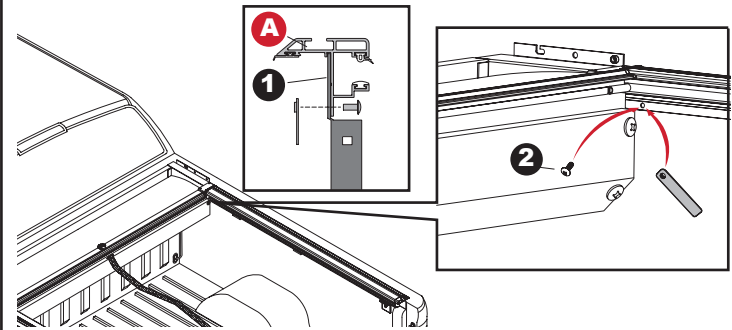
- 1** (1) Turn lock to 10 o'clock. (2) Align MaxTraks (A) onto housing stem. (3) Make sure the edge of the tracks butt up against housing on driver and passenger side.



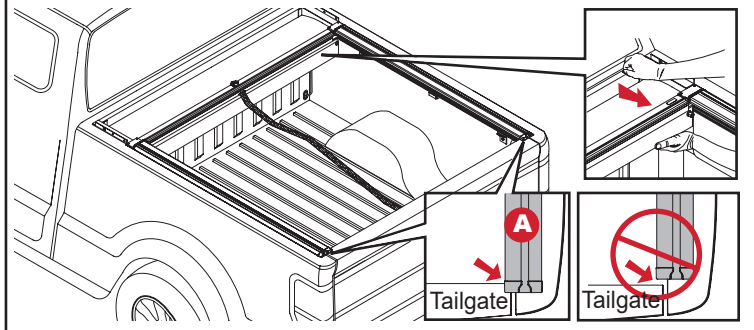
- 2** Loosely attach existing clamps with socket cap screw and lock washer.
Note: Clamp configuration may vary by application.



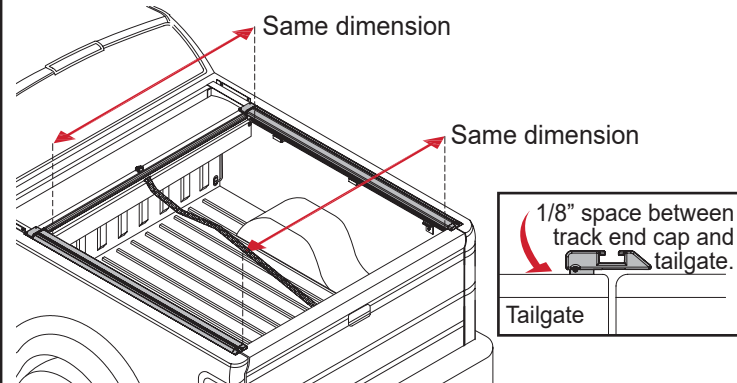
- 3** Secure tracks (A) to housing stem (1) on driver and passenger side using cargo nut and screw using a Phillips screwdriver (2).



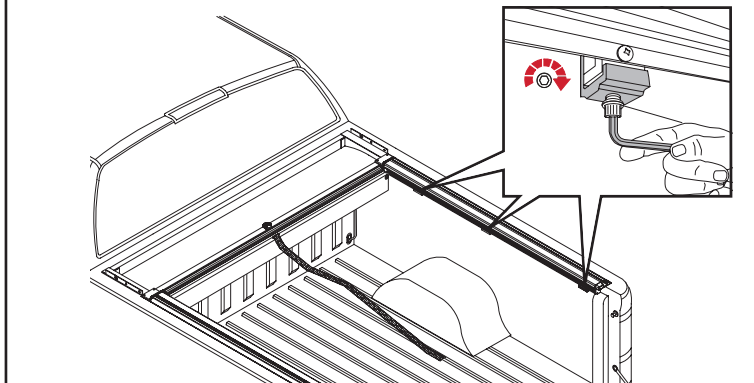
- 4** Close tailgate, shift the housing back so the end of the tracks (A) are up against the tailgate on driver and passenger side.



- 5** Important to check the track to track inside dimension, otherwise the cover will not latch properly on driver and passenger side.



- 6** Tighten bed clamp using the supplied Allen wrench on driver and passenger side.



- 7** Replace lid on housing by pushing down (1) and toward tailgate (2) on driver and passenger side. Then install the existing lid screws with a Phillips screwdriver (3) on driver and passenger side.

