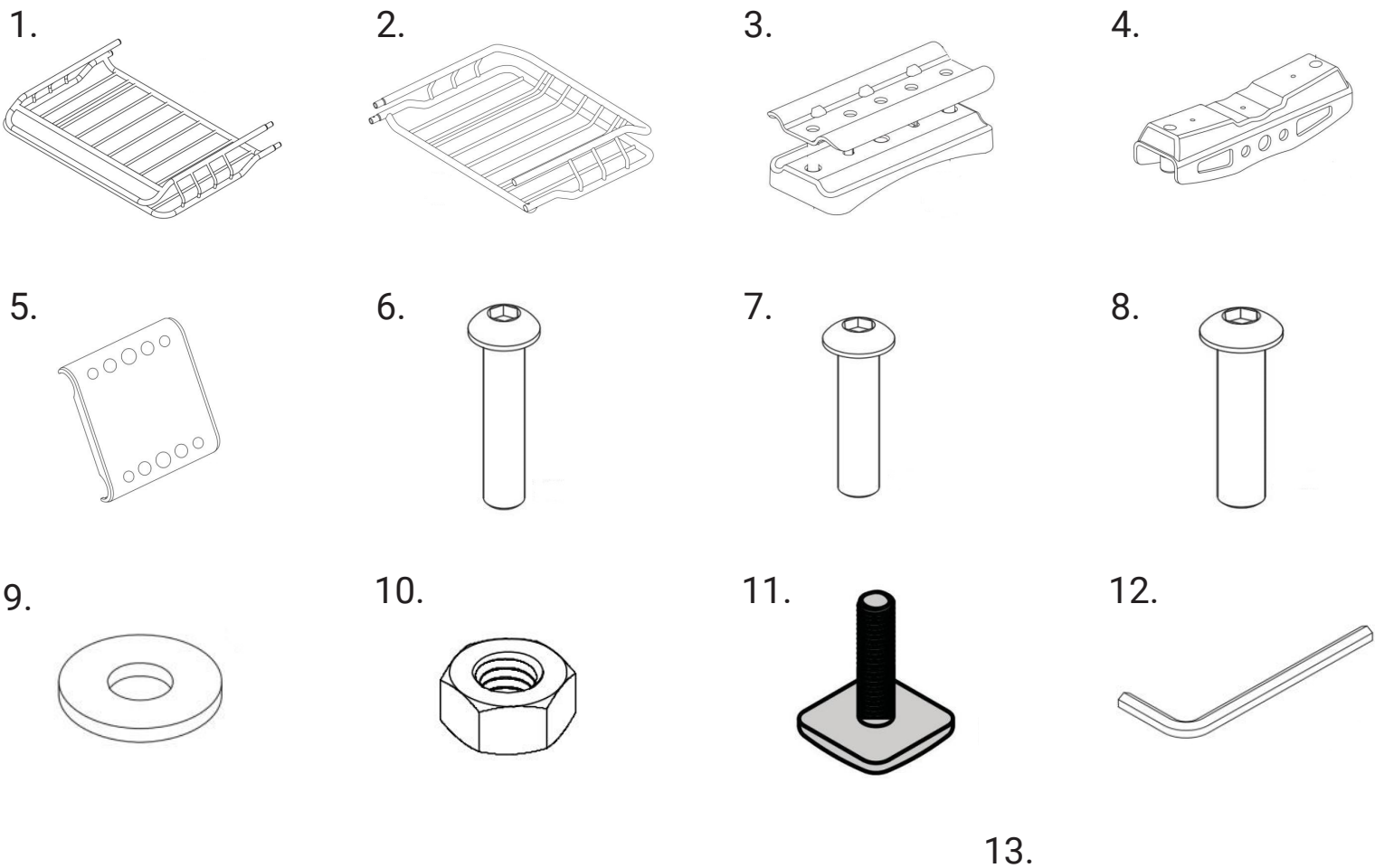


Components and Hardware:



Components and Hardware:

1. Elevate Cargo Basket - Standard, Front	(1)
2. Elevate Cargo Basket - Standard, Rear	(1)
3. Clamp Base	(4)
4. Clamp Plate	(4)
5. Mounting Cover	(2)
6. M6 x 80mm Bolt	(8)
7. M6 x 35mm Bolt	(8)
8. M6 x 40mm Bolt	(4)
9. M6 Washer	(16)
10. M6 Nut	(16)
11. T-Bolt	(4)
12. Allen Wrench	(1)
13. Double Ended Box Wrench	(1)

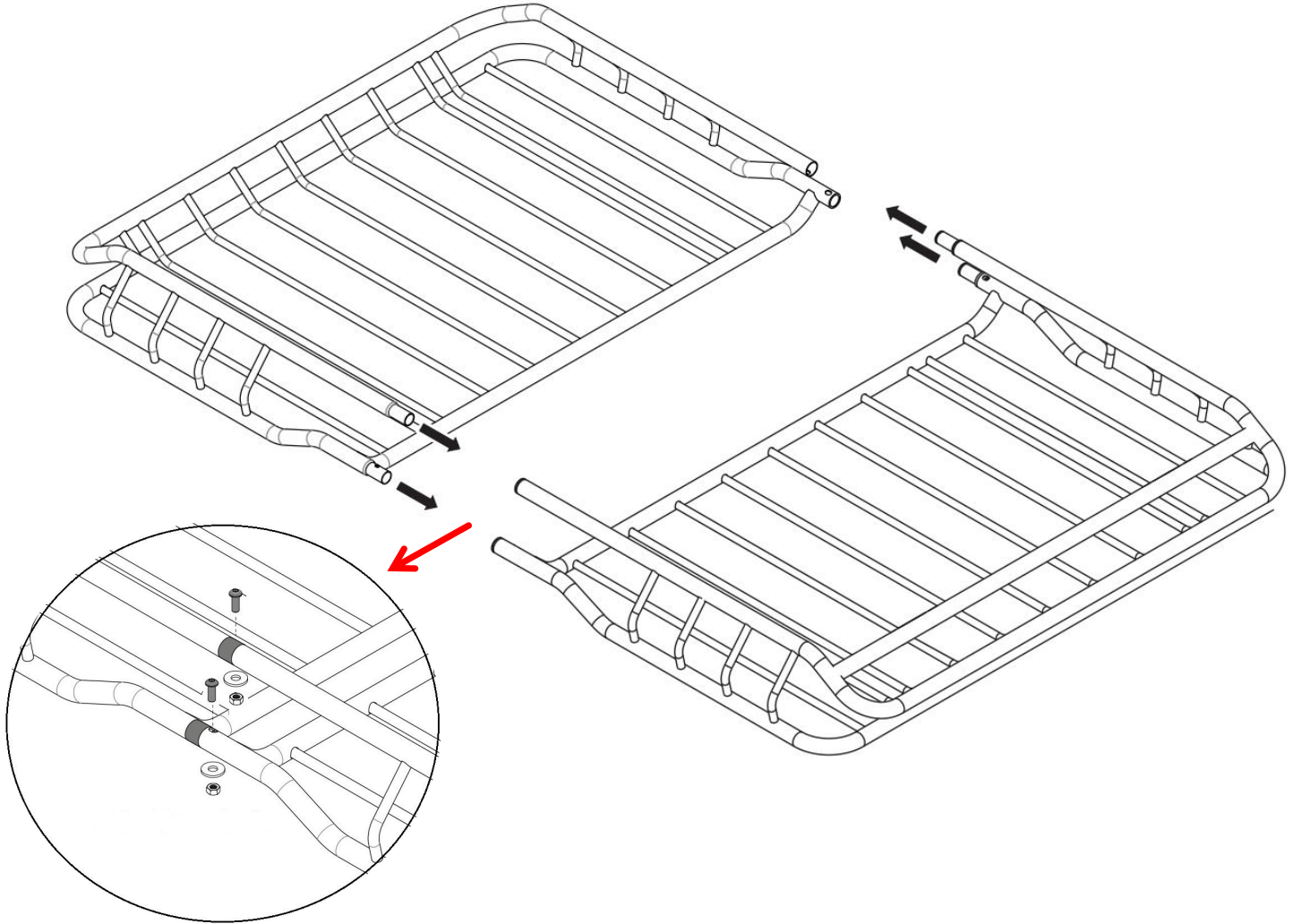


Tools for Installation:

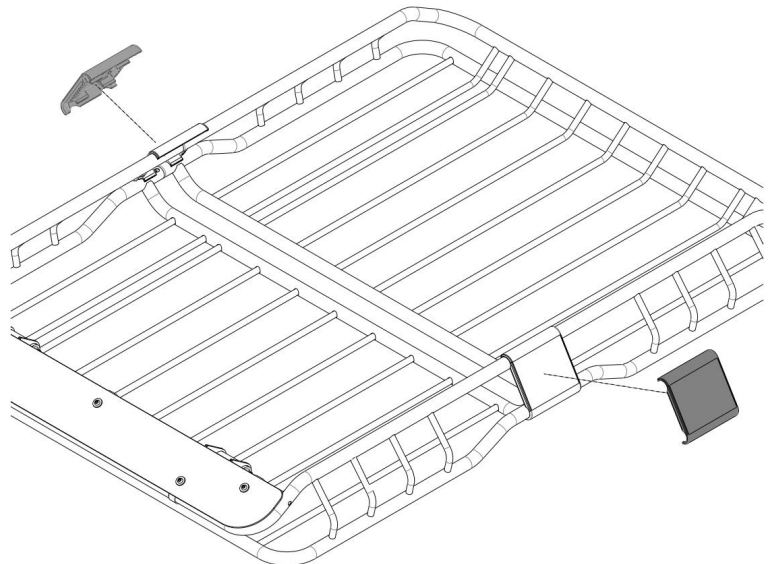
- Allen Wrench (provided)
- Double Ended Box Wrench (provided)

RealTruck Elevate Cargo Basket - Standard

1. Connect the Cargo Basket - Standard, Front (#1) to the Cargo Basket - Standard, Rear (#2) then secure using M6 x 40mm Bolts (#8), M6 Washers (#9) and M6 Nuts (#10).

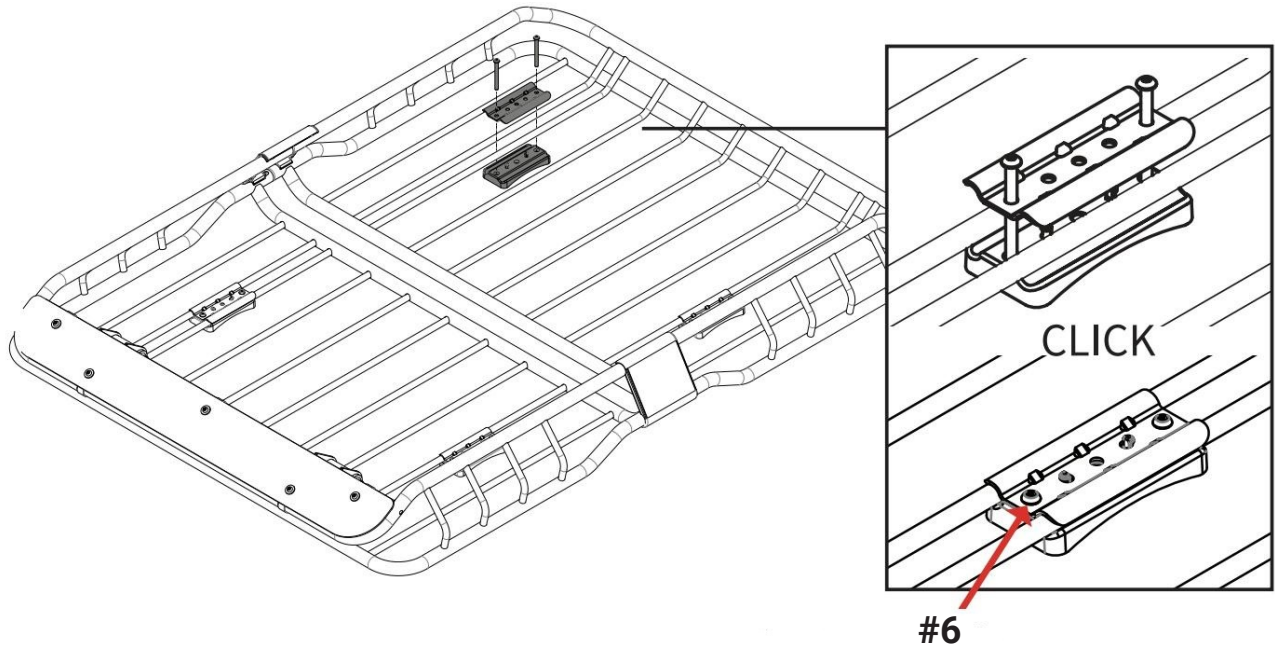


2. Position and snap the Mounting Covers (#5) over the installed hardware.

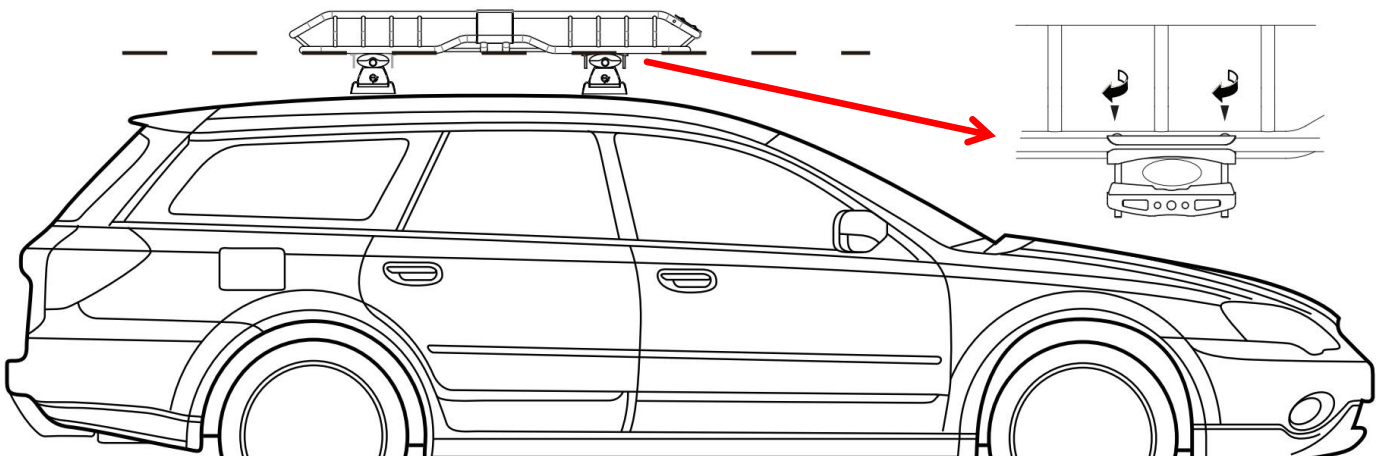
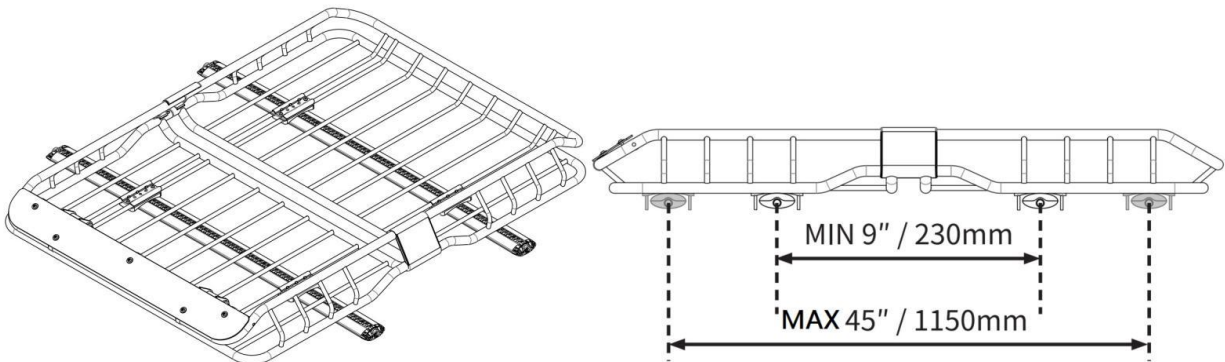


RealTruck Elevate Cargo Basket - Standard

3. Fix the upper mounting on the basket as shown using the Clamp Bases (#3), M6 x 80mm Bolts (#6), and M6 Washers (#9).



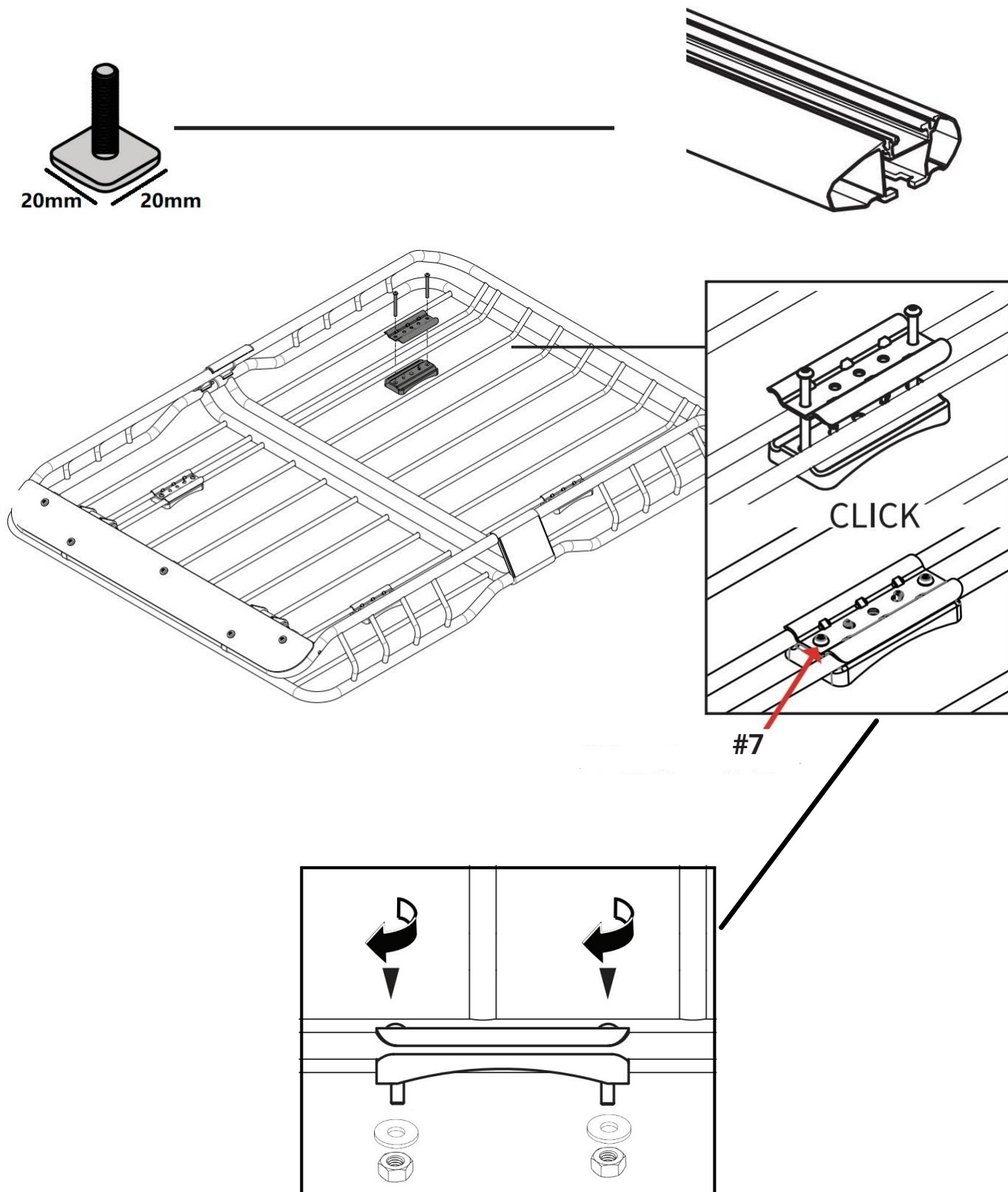
4. Before positioning the Cargo Basket on the cross bars, see the minimum and maximum distances below. The Clamp Plate (#4) will attach under the Clamp Base (#3) using the same M6 x 80mm Bolt (#6) from the previous step.



RealTruck Elevate Cargo Basket - Standard

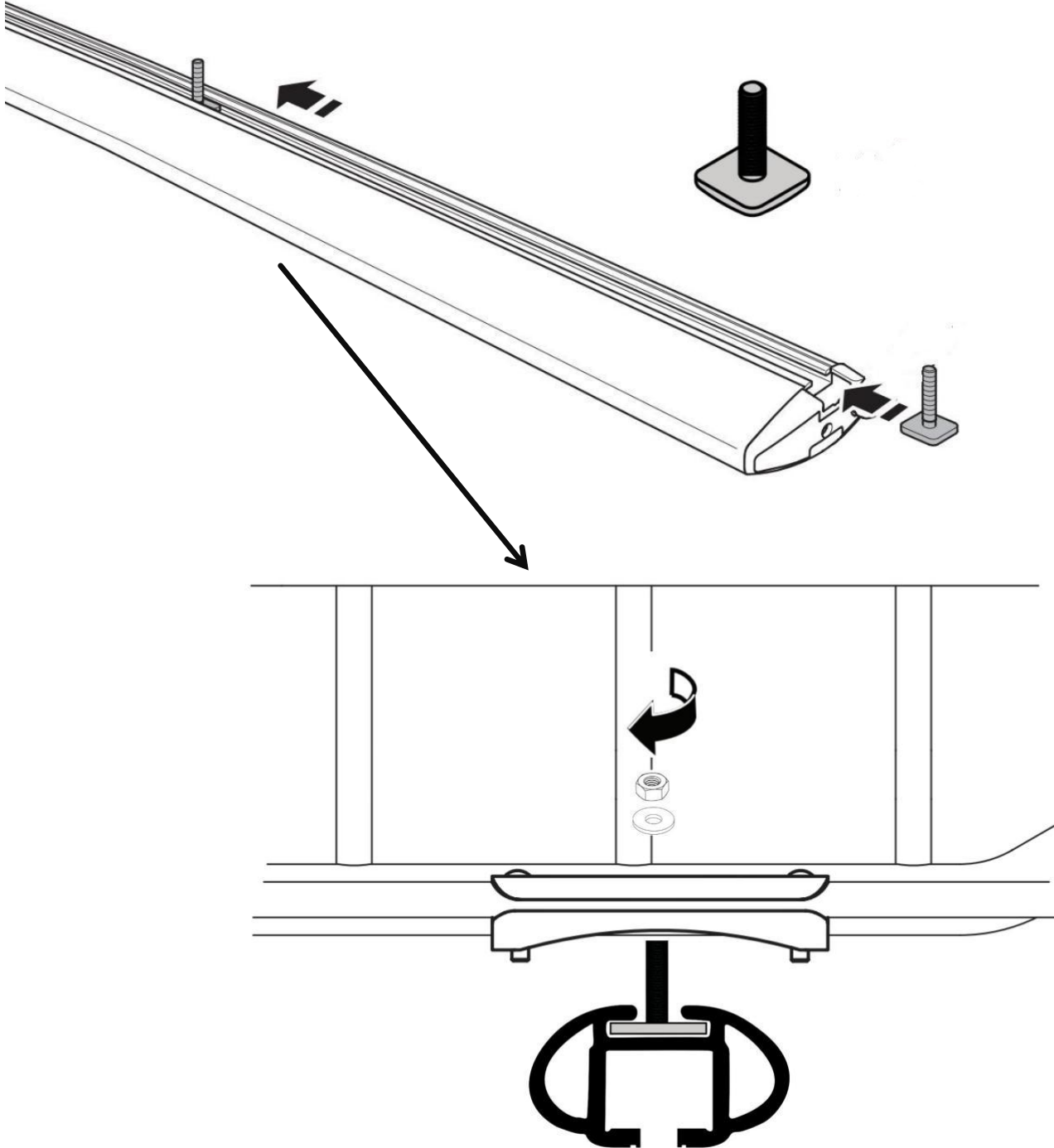
T-Slot Installation

5. Fix the upper mounting on the basket as shown using the Clamp Bases (#3), M6 x 35mm Bolts (#7), M6 Washers (#9), and M6 Nuts (#10).



RealTruck Elevate Cargo Basket - Standard

6. Slide the T-Bolt (#11) into the T-Slot of the cross bar in the proper position, then place the Cargo Basket on the cross bars. Secure with M6 Washers (#9) and M6 Nuts (#10).



RealTruck Elevate Cargo Basket - Standard

Before Installation:

1. Read this instruction carefully before installation.
2. Clean the roof racks before installation.
3. Operation of the vehicle with cargo rack installed may cause a noticeable change in wind noise.
4. Professional installation would be highly recommended.

Load:

1. Check your vehicle owner's manual for maximum roof load capacity.
2. On road capacity = maximum roof load capacity-load carrier weight
3. Off road capacity = on road capacity/1.5
4. The load's security should be checked after a short distance. And thereafter at suitable intervals. Tighten the load's securing straps whenever necessary.

Driving:

1. Adapt your speed according to the load weight and the current driving conditions, such as the road conditions, wind speed and direction, traffic conditions and applicable speed limits, do not exceed 120 km/h(75 mph) in any circumstance, and observe speed limits.
2. Drive over speed bumps with 10 km/h (6 mph) maximum speed.
3. The vehicle's total height increases when loading, note and observe height limits.
4. The vehicle's driving characteristics and braking performance change and its vulnerability to side-winds increases when a load is carried on the roof.
5. Check the tension of the load carrier frequently, especially when traveling on rough roads.

Maintenance:

1. Periodic check to ensure all hard ware remains secure and tight.
2. Cargo rack must be removed before drive through an automatic car wash.
3. Replace defective parts in time.
4. When not in use, remove cargo rack and store safely.

