

advanced FLOW engineering

Instruction Manual P/N: 79-21006L

Scorpion Grille

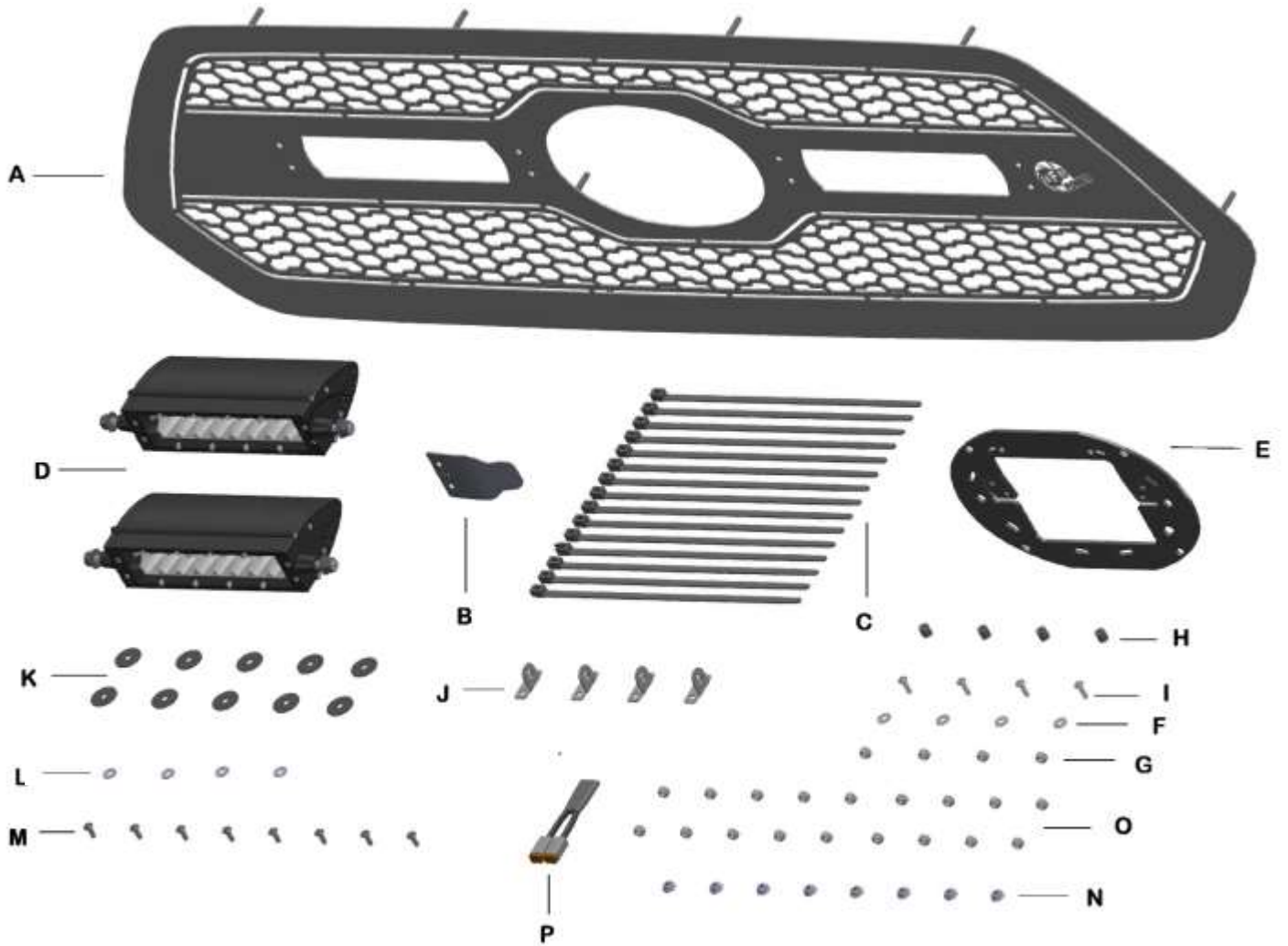
Make: **Toyota** Model: **Tacoma** Year: **2018-2020**



- Please read the entire instruction before proceeding.
- Ensure all components listed are present.
- Ensure you have all necessary tools before proceeding.
- Disconnect the negative battery terminal before proceeding.
- If you are missing any of the components, call customer support 951 493 7100

Label	Qty.	Description
A	1	aFe Scorpion Grille
B	1	aFe Logo Back Plate
C	15	Cable tie 8"
D	2	6" Single Row LED
E	1	Toyota Safety Sense / Emblem Mounting Plate
F	4	Washer, 1/4" (black)
G	4	Locknut, 1/4"- 20 Nylon (black)
H	4	Spacer, #10 X 3/8" (black)
I	4	Screw, #10-32 x 5/8" SS Button Head
J	4	Bracket, LED Bar #4 90°
K	10	Washer, 3/16" x 1" Fender (black)
L	4	Washer, #10
M	8	Screw, #10-32 x 1/2" button head (black)
N	8	Nut, #10-32 Flange
O	18	Locknut, #10-32 Nylon
P	1	Power Harness

- Applications models vary. We recommend verifying fitment before beginning installation process.
- Images featured in the instruction documents may not always exactly match your grille.



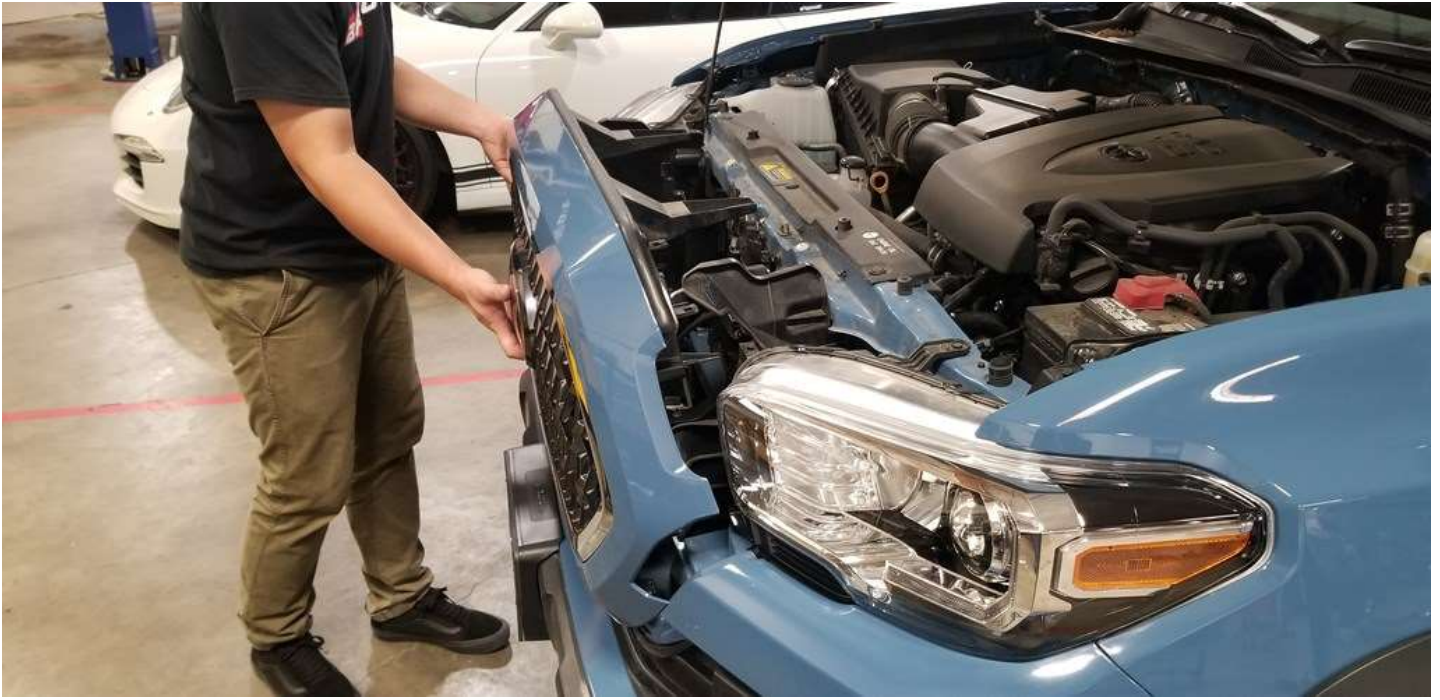


Note: Before you begin, use "Painters Tape" to apply a protective guard around the work areas (fender and bumper valance). This will help protect the paint and finish of your vehicle.

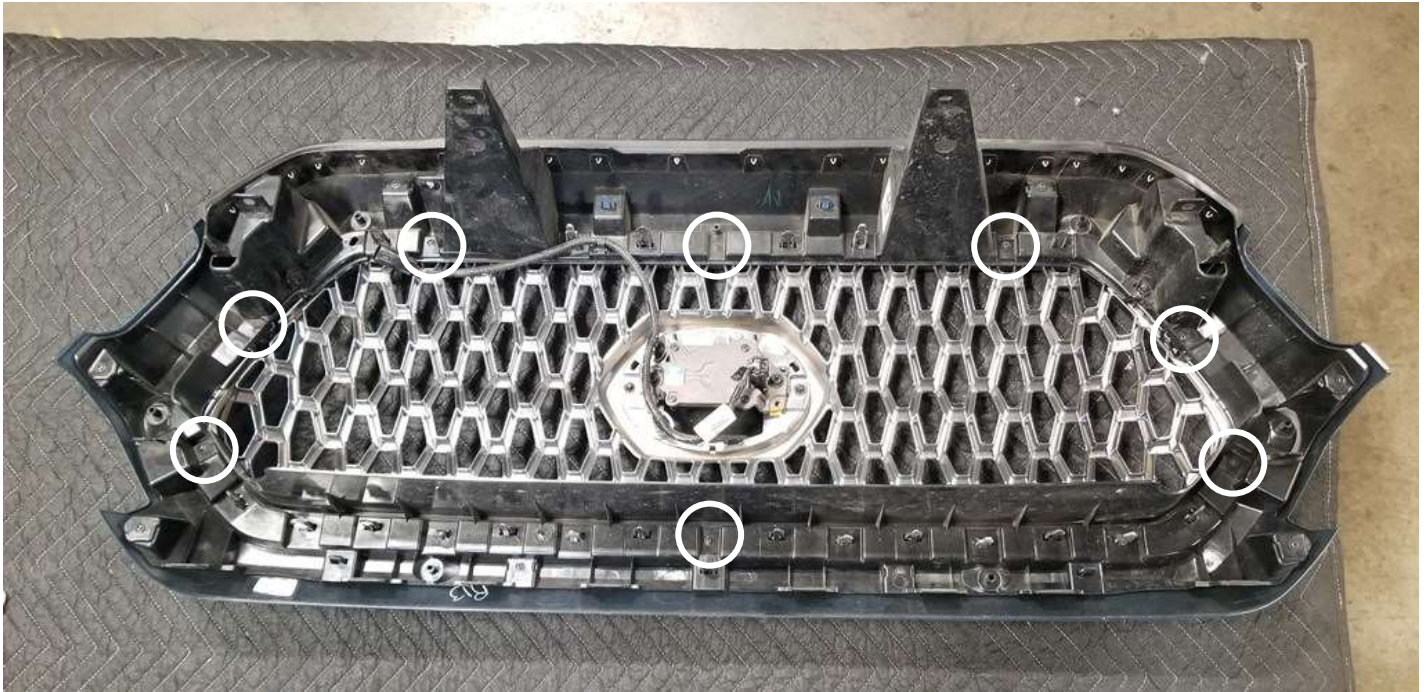
1. Disconnect the negative battery terminal.
2. Locate the two (2) plastic push pins near the inside corners of the headlights (one (1) each side) and remove. Save for reinstallation.



3. Remove the two (2) bolts that attach the factory grille to the core support. Save for reinstallation.
4. Disconnect the Toyota Safety Sense (TSS) connector.



5. Grab the factory grille with both hands and firmly pull on both sides. The factory grille will release from the lower clips. Remove the factory grille from the truck.

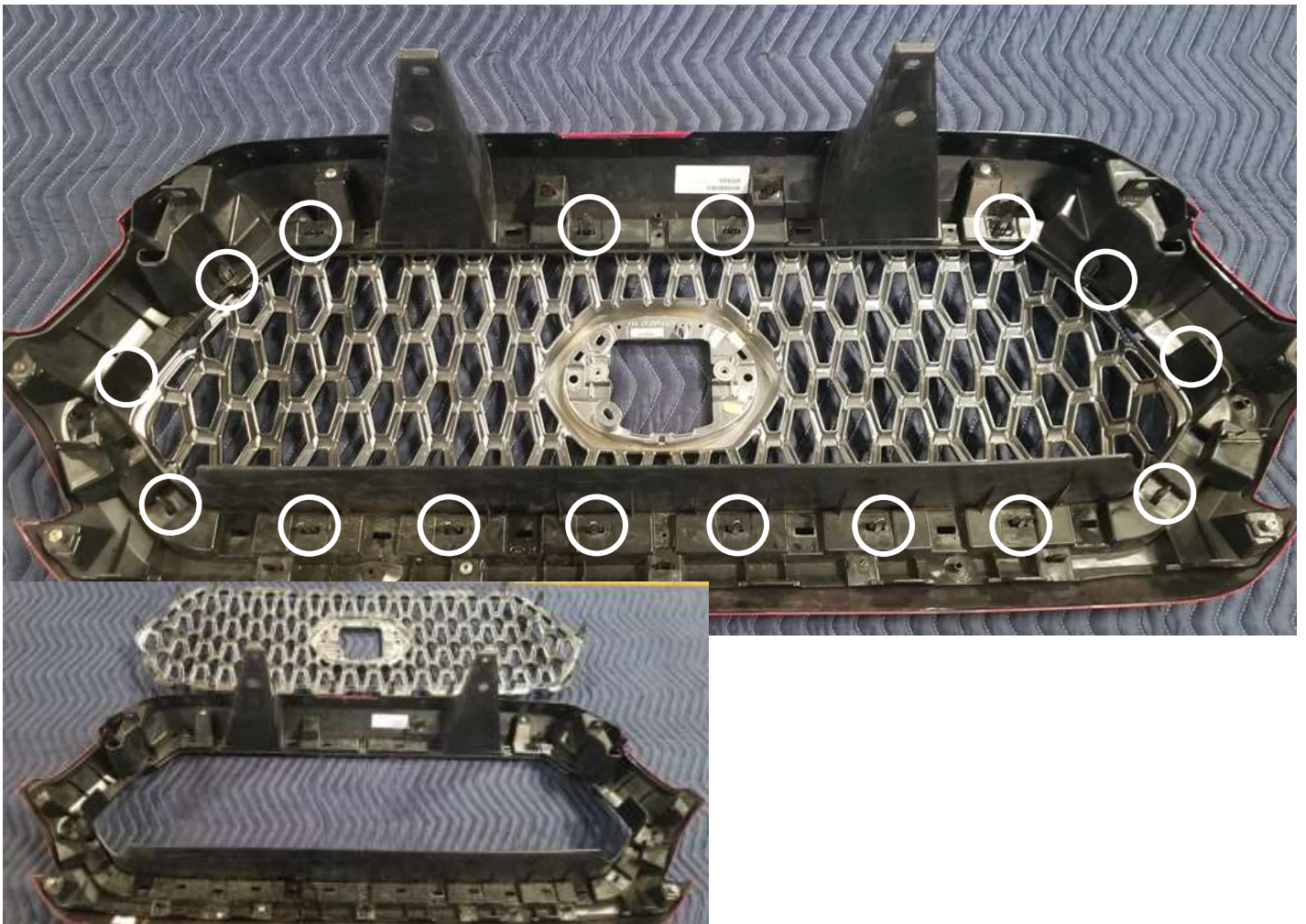


Note: To prevent scratching the aFe Scorpion Grille while performing assembly, use a protective covering between the factory grille and a flat surface.

6. Place the factory grille on a non-scratchable work surface.
7. Remove the eight (8) screws that attach the inner grille shell to the outer grille shell.



8. Release the outer grille trim ring and remove. Squeeze the eight (8) circled locking tabs with broad nosed pliers and push them out of the outer grille shell. Discard the outer trim ring as It will not be reused.



9. Release the inner grille and remove. Squeeze the 16 circled locking tabs with broad nosed pliers and push them out of the outer grille shell.
10. Place the outer grille shell aside. Save for reinstallation.

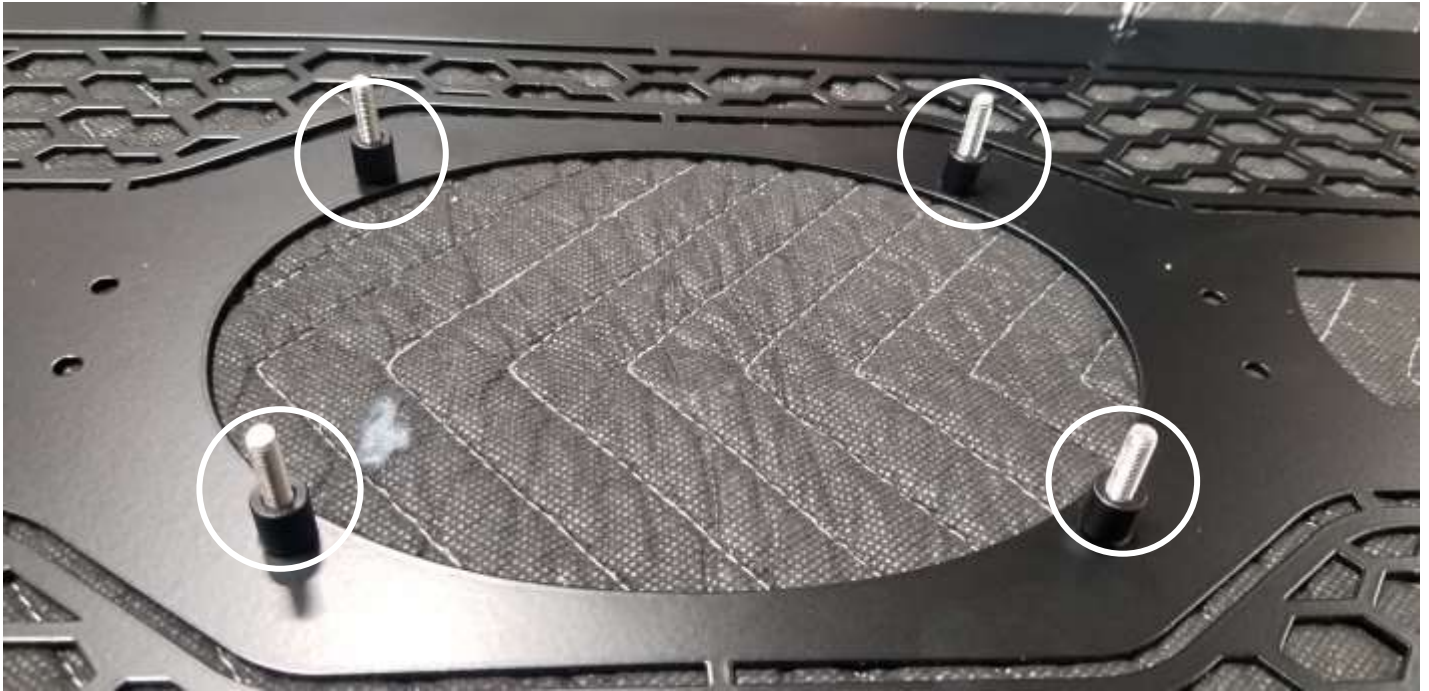


Note: Please make sure to note which side is up on the TSS sensor.

11. Remove the TSS sensor wiring harness from the factory grille. Save for reinstallation.
12. Remove the TSS sensor from the grille. It is located on the back side of the factory Toyota logo. Save for reinstallation.

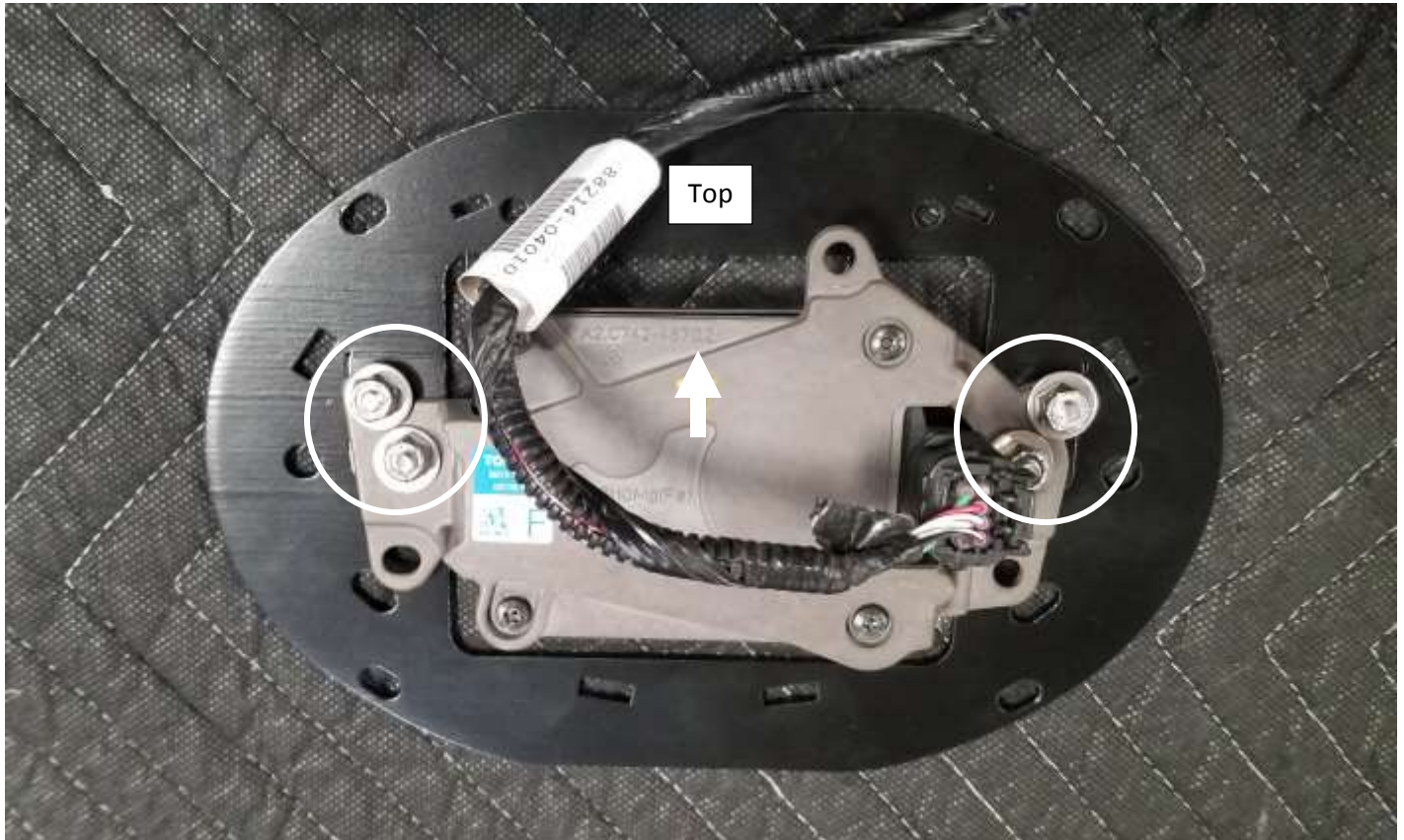


13. Remove the factory Toyota logo from factory grille (you will need to cut the retaining rings off or break the post off). Unclip the factory Toyota logo from the grille. Save for reinstallation.
14. Discard the factory inner grille as it will not be reused.



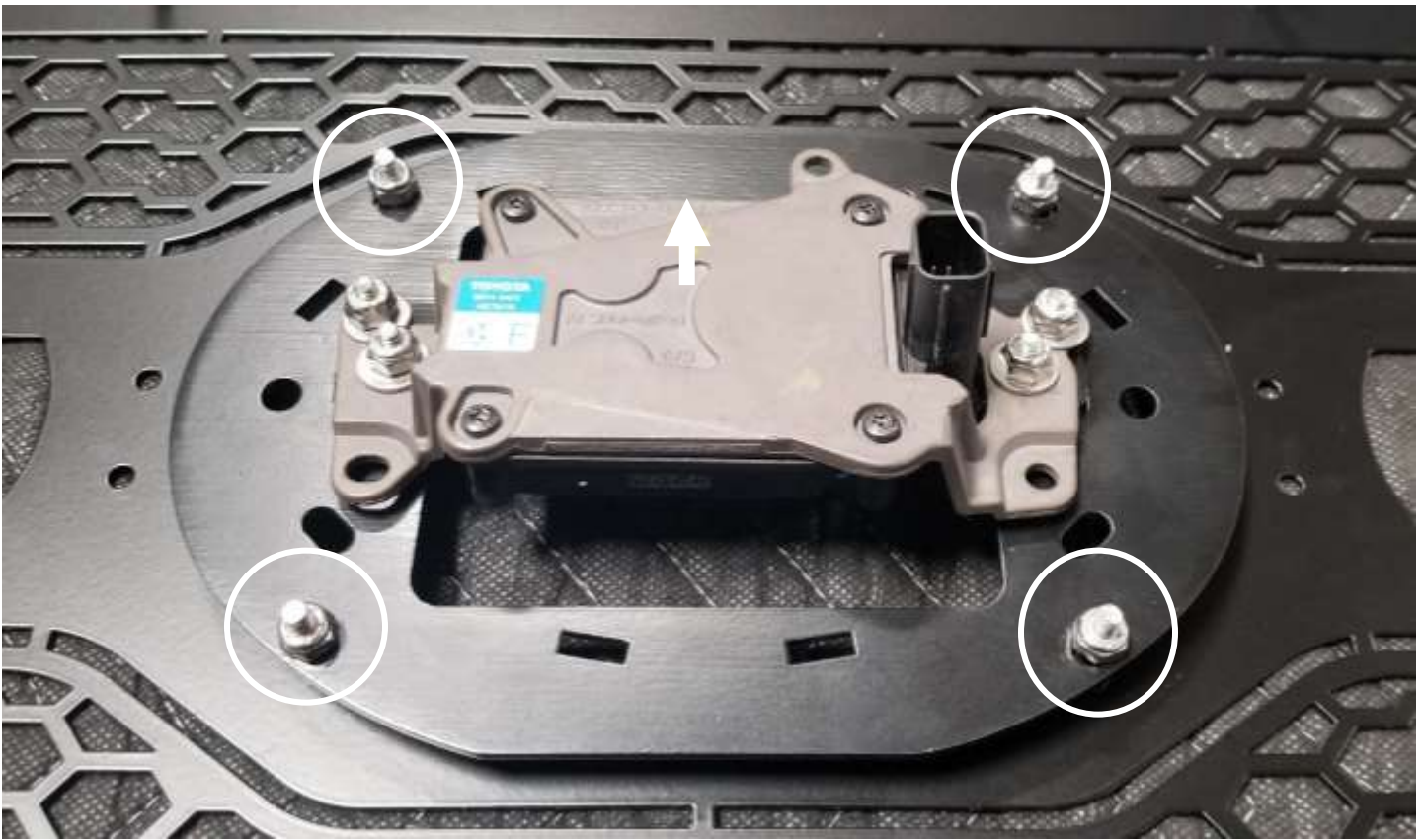
15. Set the supplied aFe Scorpion grille on the non-scratchable work surface.

16. Install the four (4) supplied #10 x 3/8" spacers.



Note: Make sure to take note of the direction the TSS sensor is facing. The sensor must be installed facing the correct direction for it to work properly.

17. Using the supplied Toyota Safety Sense / emblem mounting plate mount the TSS sensor using four (4) supplied #10-32 x 5/8" SS button head screws, four (4) supplied #10 washers, and four (4) supplied #10-32 nylon lock nuts. Tighten all the hardware.



Note: Make sure to place the TSS sensor facing the direction in which it was removed. The sensor must be installed facing the correct direction for it to work properly.

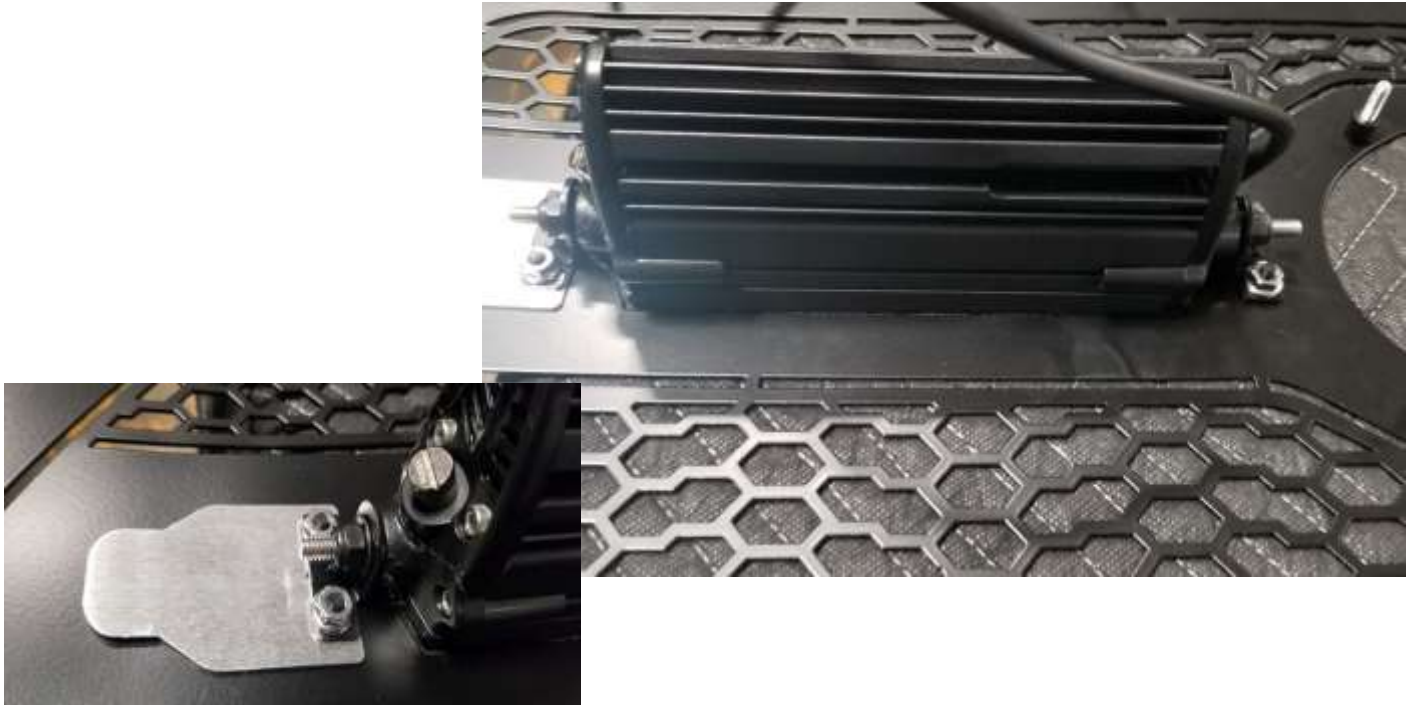
18. Install the Toyota Safety Sense / emblem mounting plate mount to the aFe Scorpion grille using four (4) #10-32 nylon lock nuts. Leave the nuts loose at this time.



19. Install the lower tabs of the Toyota logo into the Toyota Safety Sense / emblem mounting plate first. Then install the upper tabs carefully. Make sure to push the tabs on the Toyota logo through the Toyota Safety Sense / emblem mounting plate so that they lock in place. Center the logo and tighten the hardware installed in Step 18.



20. Remove the four (4) 1/4"-20 nuts from the two (2) supplied 6" Single Row LED and discard (these will not be reused).



Note: Assemble the 6" Single Row LED lights and the LED bar #4 90° brackets prior to installing on the aFe Scorpion grille.

Drivers Side:

21. Attach two (2) supplied LED bar #4 90° brackets (bracket feet point away from each other) using two (2) supplied 1/4" washers (black) and two (2) supplied 1/4"-20 nylon nuts (black). Do not tighten at this time.

22. Attach the light to the aFe Scorpion grille. Install four (4) supplied #10-32 x 1/2" button head screws (black) through the face of the aFe Scorpion grille. On the back of the aFe Scorpion grille, place the supplied aFe logo back plate over the screws on the far left of the grille. Place the assembled light and brackets over the #10-32 x 1/2" button head screws. Install four (4) supplied #10-32 flange nuts onto the #10-32 x 1/2" button head screws. After aligning the light in the grille, tighten all hardware.

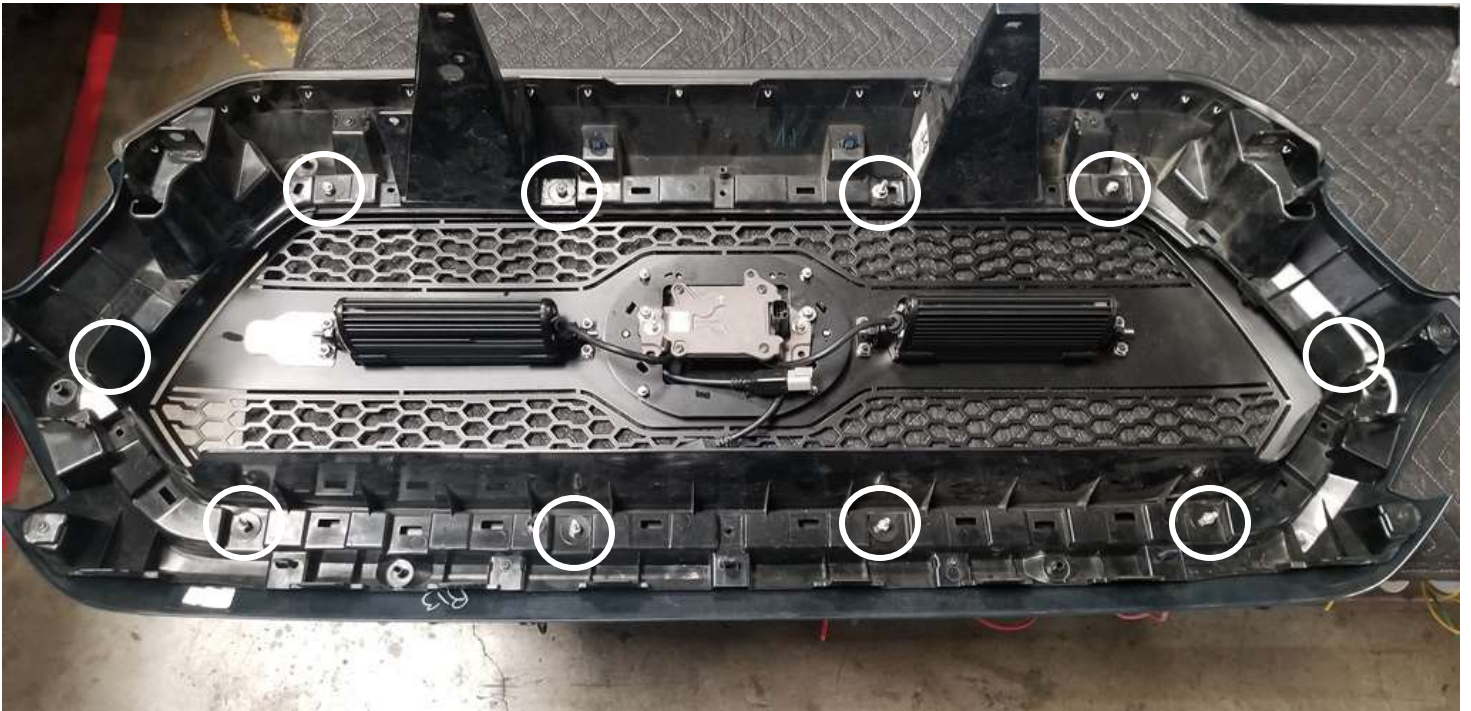


Passenger Side:

23. Attach two (2) LED bar #4 90° brackets (bracket feet point away from each other) using two (2) 1/4" washers (black) and two (2) 1/4"-20 nylon nuts (black). Do not tighten at this time.
24. Attach the light to the aFe Scorpion grille. Install four (4) #10-32 x 1/2" button head screws (black) through the face of the aFe Scorpion grille. On the back of the aFe Scorpion grille, place the assembled light and brackets over the #10-32 x 1/2" button head screws. Install four (4) #10-32 flange nuts onto the #10-32 x 1/2" button head screws. After aligning the light in the grille, tighten all hardware.



25. Before installing the aFe Scorpion grille, install the supplied power harness. The red wire goes on the positive battery terminal (+) and the black wire goes on the negative battery terminal (-). You will need to mount the switch inside the cab or to an available prewired switch. Use ten (10) 8" cable ties to secure the wiring loom to the vehicle.



Note: Please be careful when tightening the aFe scorpion grille. Due to the shape of the factory grille some of the nuts will not be tightened all the way down the studs.

26. Carefully install the factory outer grille shell over the aFe scorpion grille. Install the supplied ten (10) 3/16" x 1" fender washers (black) and ten (10) #10-32 nylon nuts. Center the grille and tighten.



27. Install the assembled grille back onto the truck. Push on the bottom of the assembled grille to seat the clips.



28. Install the two (2) factory screws in the grille at the core support and two (2) push pins near the headlights (removed in Step 2 & 3).
29. Install the wiring harness for the TSS sensor. Make sure the connectors are connected properly.
30. Plug the wiring harness for the 6" Single Row LEDs in and secure all the wiring together using five (5) cable ties.



31. Remove all the painter's tape if any was applied.
32. Reconnect the negative battery cable.
33. Installation is now complete.



WARNING

PLEASE CONSULT YOUR LOCAL AUTOMOTIVE ELECTRICAL PROFESSIONAL FOR INSTALLATION SERVICES AND ADVICE. aFe Power IS ONLY EQUIPPED TO PROVIDE BASIC TECHNICAL ASSISTANCE DUE TO THE DIVERSITY OF VEHICLES, VEHICLE OPTIONS & MODIFICATIONS AND LIGHTING.

CONFIGURATION OPTIONS AVAILABLE. aFe Power products cannot be held liable due to improper component installation and / or faulty wiring.

GENERAL GUIDELINES:

LED Lights & LED Light Bars operate at relatively high currents and should only be installed by qualified personnel with experience in switched / relayed high draw DC Circuits.

- Light Bars are designed for use only with standard 12v DC power systems
- Light Bars are for OFF-ROAD USE ONLY. Check your local laws & regulations regarding vehicle mounted lights.
- Some Light Bars are equipped with waterproof connectors while others are simply pig-tailed
- Red Wires = POSITIVE | Black Wires = NEGATIVE
- ALWAYS install your lights on a fused circuit. Basic fusing guidelines: maximum 5A for every 10" of LED Light Bar.

GENERAL USE, INSTALL AND ADJUSTMENT TIPS

NOTE 1: aFe Scorpion Grilles (with LED Light Bars installed), and LED Light Bars themselves are for OFF-ROAD USE ONLY.

NOTE 2: To adjust the angle of your light bars simply loosen the mounting hardware on either side of each Light Bar, rotate the Light Bar to adjust the angle, then tighten the hardware once the desired angle is achieved (please be careful not to over-tighten the mounting hardware or scratch the protective powder-coat finish). It is best to adjust the angle with the vehicle on level ground with the lights facing a wall, garage door or other solid barrier at approximately 25-30 feet.

NOTE 3: Please consult a qualified automotive electrical professional for light bar wiring installation.



GRILLE CARE INFORMATION

aFe Power Scorpion Grilles are the finest in the industry but do require normal care. Wash regularly as you would when caring for your vehicles. Never use dish soap.

GLOSS BLACK FINISH

aFe Power Scorpion Grilles with gloss black powder coated finish may be washed regularly as you would when caring for your vehicles finish using soap and water. aFe Power Scorpion Grilles should be waxed at the same time that you wax the vehicle. As a rule, anything you use to clean your vehicles painted surfaces can be used to clean and maintain your aFe Power Scorpion Grille. A gloss powder coated finish can be cared for in the same fashion that you would care for your vehicle's factory paint job. Never leave wet water spots as that may leave a blemish.

MATTE BLACK FINISH

Paint warranty applies to defects in material and / or workmanship, it does not cover the matte finish surface appearance. To enjoy the matte appearance for many years to come, please follow these owner care and maintenance tips. Get a no-shine matte car wash soap that uses no fillers, no silicone, and won't strip your matte paint of its layer of protection. Do not use wax, detail spray, armor all®, or any products made for normal paint. Use only products specifically developed for matte finish paint. Do not use products that are even mildly abrasive, such as polishes, glazes, or rubbing compounds. do not use mechanical cleaners or polishers. Do not use terrycloth, cloth, or paper towels. Do not rub the finish vigorously, this will burnish the paint finish, causing a permanent shiny spot. Shiny spots cannot be removed.

Do not use commercial car wash facilities or their shine enhancement products. Most car wash brushes, large mechanized "towels," and shine enhancement products can damage matte paint. Remove foreign substances such as insect remains, tar, and road debris using a soft applicator and a mild solvent; saturate and soak area before cleaning—rub lightly.

Hand-wash with a soft wash mitt and mild cleaning product safe for matte paint. Use microfiber cleaning cloths with alcohol-based window cleaner for basic surface clean-up.

aFe Scorpion Grilles product warranty:

aFe Power warrants its grille products to be free from defects in material and workmanship for the lifetime of the grille. aFe Power products warrants the finish of its grille products for a 3-year period beginning at the time of sale to the end user. These warranties are limited warranties and do not cover abuse, modification or improper installation nor do they cover finish failure caused by caustic cleaning agents, road salts or other chemicals. aFe Power reserves the right to repair or replace a defective product at its sole discretion. Any aFe Power product must be returned to aFe Power for warranty consideration and must be returned at the customer's expense. In the event that the product is deemed to be defective, the repaired or replaced item will be returned via a surface shipping method to the customer at aFe Power's expense. No provision is made for any labor, rental car or other costs incurred by the failure of its products.

This Page Intentionally Left Blank

This Page Intentionally Left Blank



advanced FLOW engineering, inc.
252 Granite Street Corona, CA 92879
TEL: 951.493.7100 • TECH: 951.493.7100 x23
E-Mail: Tech@aFepower.com