

ORACLE LIGHTING

USER MANUAL

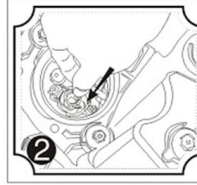


INSTALLATION OVERVIEW

ORACLE Lighting S3 LED Headlight and Fog Light bulbs replace your vehicle's factory lighting with a simple plug and play replacement. The installation process will vary depending on bulb size. Please follow the steps for the particular bulb size you are installing for best results.

H1 / H3 / H4 / H7

Remove the collar of the bulb by twisting 1/4 turn counter clockwise.

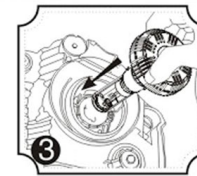


Align the collar of the bulb in the factory socket and use the metal clamp to lock it into place.

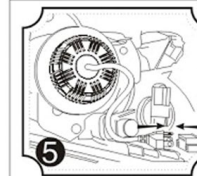
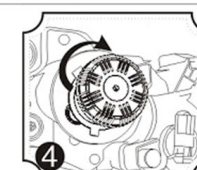
1

H1 / H3 / H4 / H7

With the collar now installed the bulb can now be installed into the fixed collar.



Install the bulb by inserting and twisting 1/4 turn clockwise.

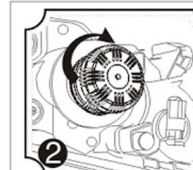
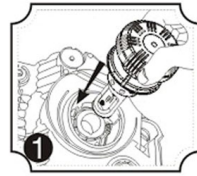


Complete the installation by connecting the wiring harness to the factory plug.

2

H10 / 9005 / 9006 / H11 / P13W / H13 / 5202

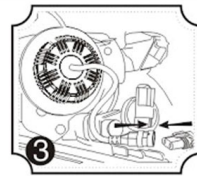
Insert the bulb into the factory headlight socket.



Make sure the bulb is completely seated into the headlight socket and rotate 45 degrees clockwise.

*5202 bulb size does not twist in, but rather locks into place by pressing both plastic tabs.

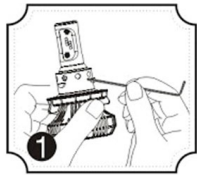
Complete the installation by connecting the wiring harness to the factory plug.



3

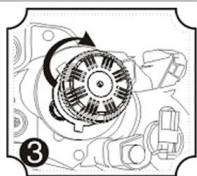
9004 / 9007

Remove the collar of the bulb by removing the set screw with the supplied allen wrench.



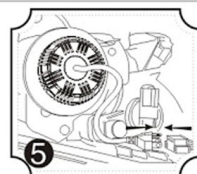
Install the collar into the headlight socket and twist into place.

Make sure the bulb is completely seated into the headlight socket and rotate the factory locking ring 45 degrees clockwise.



4

9004 / 9007

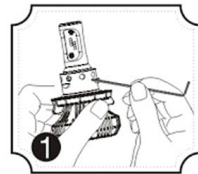


Complete the installation by connecting the wiring harness to the factory plug.

Bulbs come pre-wired for 9007 wiring applications. 9004 will need to swap the low beam and ground wires in order to function properly.

H13 / 9004 / 9007 Beam Pattern Adjustment

Beam pattern can be adjusted by loosening the base set screw, rotating the base, and tightening at the desired location.



5

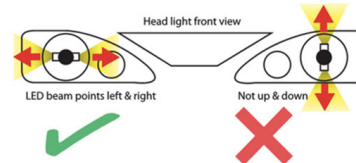
Beam Pattern Adjustment

After installing the LED Headlight Bulbs it is important that you adjust the headlight beam angle in order to focus the light on the road and not blind oncoming traffic.

Each vehicle has a different process so check your vehicle owner's manual for the location of the headlight vertical and horizontal adjusting screws. Note there's a difference between the adjusting screws and the screws or fasteners that hold the headlights in place.



Bulb Alignment



6

WARRANTY INFORMATION

Oracle Lighting Technologies (ORACLE) will repair or replace any defective product manufactured by ORACLE at no charge to the customer once defective part is returned for verification and processing. The product must be within the warranty timeframe. Oracle Lighting reserves the right to inspect, test, and diagnose the defective part to see if the defect was due to factory error or customer negligence. Customer is responsible for all related shipping charges. Warranty does not cover damage due to improper installation. The warranty does not cover charges related to a 3rd party to remove or reinstall the new parts. Returned parts may be exchanged or repaired on the discretion of the manufacturer. The warranty is not transferable and is only subject to the vehicle the equipment is originally installed in. If the product is removed, uninstalled, transfers ownership, or is otherwise parted from its original installation then warranty becomes void. Oracle Lighting will, subject to customer's compliance with the return procedures set forth below, repair or replace the hardware found not to operate in accordance with the hardware specifications, so long as customer has properly operated the hardware and used it in conformance with such specifications. To obtain warranty service, Customer must notify the product seller and obtain a return merchandise authorization (RMA) from the seller and return the product in accordance with the instructions provided by the seller. Customer is fully responsible for delivering the product to its seller or Oracle Lighting, and Oracle Lighting is responsible for returning the product if it is found to be defective. Returned products which are found by manufacturer to be not defective, out-of-warranty or otherwise ineligible for warranty service will be shipped back to Customer at Customer's expense. All replaced products and parts, whether under warranty or not, become the property of Oracle Lighting. Do NOT Return any items without proper RMA information.

Register your purchase online at: www.oraclelights.com/register

- Activate your Warranty
- Register your Product
- Free Technical Support

ORACLE LIGHTING