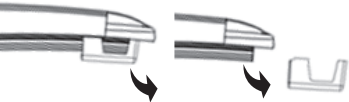
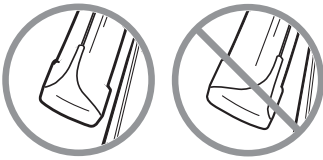
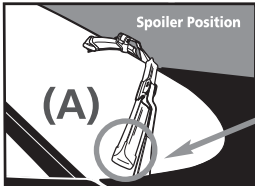


MICHELIN® Silicone Beam Blade Installation



Before Use Remove the Two End Cap Protectors:
Slide off each end cap protector after installation.



Ensure your wiper blade spoiler is facing the correct position. Spoiler should face toward windshield as shown (A).

NOTE: When replacing wiper blade, place a towel or equivalent under the wiper arm. This will protect the windshield if you accidentally allow the wiper arm to fall.

To Optimize the Silicone Wiper Performance and Activate the Water Repelling Benefit:

- 1. Ensure your windshield is clean, dry and free of any debris.
- 2. For best results, install in a cool dry place and not in direct sunlight or extreme heat.

 1/2 x 9mm x 3mm Hook 3/4 x 9mm x 4mm Hook	 3A Connector (Pre-installed)	 1 Spread top cover open by the tabs at the rear to lift up	 2 Slide end of wiper blade connector into hook of wiper arm and press down on wiper arm to secure	 3 Close cover and pull wiper blade to lock	 4 Locking tabs	 5 Close cover to lock in place
 7 x 2.6 mm Bayonet	 3A Connector (Pre-installed)	 1 Press connector head with your thumb	 2 Slide end of bayonet into connector	 3 Lock in place		
 Pinch Tab	 3A Connector (Pre-installed)	 1 Spread top cover open by the tabs at the rear to lift up	 2 Attach connector to arm	 3 Push down to lock wiper blade	 4 Close cover to lock in place	
 Side Pin Lock / 19 or 22mm	 3A Connector (Pre-installed)	 1 Remove 3A connector	 2 Attach 3B-2 connector to wiper	 3 Attach pin expander to arm	 4 Attach wiper to connector	 5 Lock in place
 Top Lock Push Button 22mm	 3A Connector (Pre-installed)	 1 Remove 3A connector	 2 Attach 3H-8 connector to wiper	 3 Attach connector to arm	 4 Push to lock on arm	 5 Lock in place
 Narrow Top Lock Push Button 19mm	 3A Connector (Pre-installed)	 1 Remove 3A connector	 2 Attach 3H-8 connector to wiper	 3 Attach connector to arm	 4 Push to lock on arm	 5 Lock in place

For step-by-step installation and removal videos - Scan this code with your smartphone's QR code app. or visit www.michelinwipers.com



GUARANTEED SATISFACTION: If you are not completely satisfied with the quality and performance of your Michelin Wiper Blades call 1-866-499-0572 and tell us why. Send your original receipt to Pylon Manufacturing Corporation and we will send you a set of comparable replacement blades free of charge. Replacements are limited to a period of one year after the date of purchase.

Michelin is a trademark owned by, and used with permission of the Michelin Group. Manufactured and distributed under license by Pylon Manufacturing. © 2020 Michelin North America, Inc. All rights reserved. The Michelin Man is a registered trademark of Michelin North America, Inc. ©2020 Pylon Manufacturing Corp. All rights reserved.