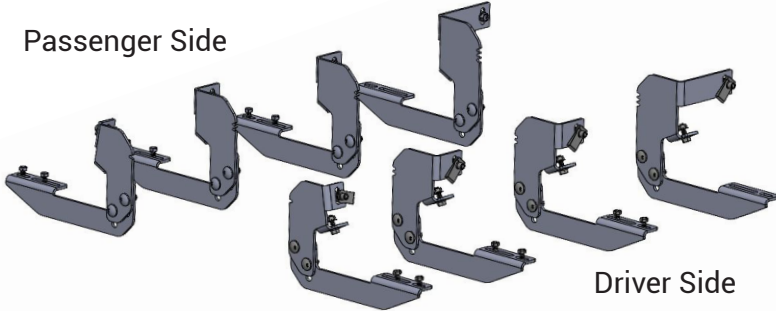


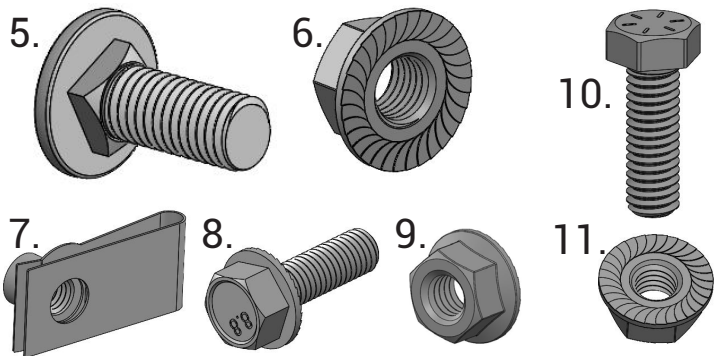
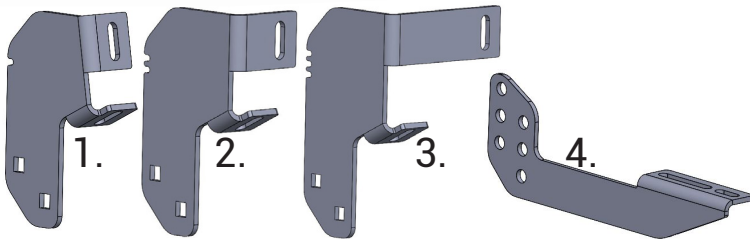
IAT-93090 1997-2003 Ford F150

Component List:

Passenger Side

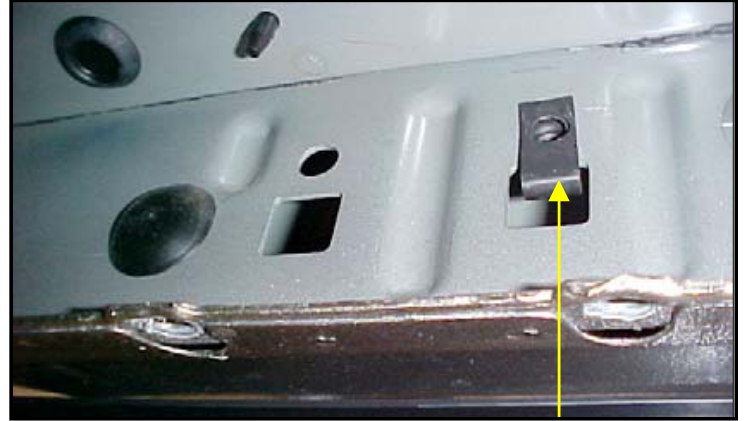


Driver Side



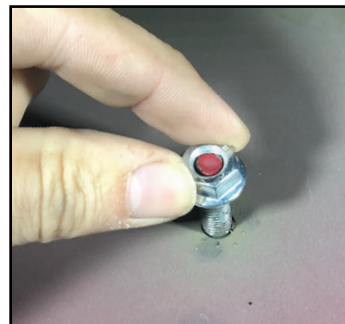
1. Truck Mount Bracket A (2)
2. Truck Mount Bracket B (4)
3. Truck Mount Bracket C (2)
4. Board Mount Bracket..... (8)
5. Carriage Bolt M10 x 25mm..... (16)
6. Serrated Flange Nut M10..... (16)
7. Spring Clip Nut M8..... (8)
8. Flange Bolt M8 (16)
9. Serrated Flange Nut M8..... (8)
10. Hex Bolt 5/16"-18 (16)
11. Serrated Flange Nut 5/16"-18..... (16)

Installation Instructions:



STEP 1:

Find the pre-existing holes equally spaced on the pinch weld. The lower tab of the truck brackets mount to the pinch weld. The upper tab mounts to the rocker panel. If your model has a larger open hole in rocker panel this will require spring clip nut M8 (7).



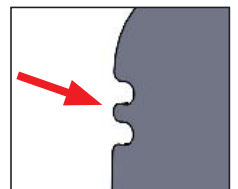
STEP 2:

Other mounting areas will have threaded studs that will require flange bolt M8 (8) to attach. Other areas will have threaded holes that will require the flange bolt (8). Clean threads of the stud and threaded holes to assure the new hardware will attach freely.

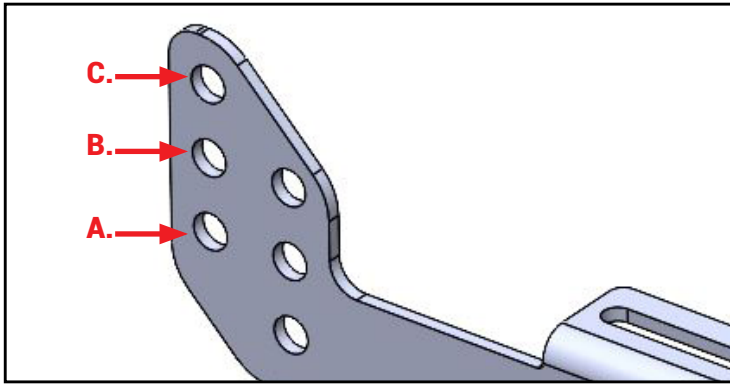
STEP 3:

Place truck bracket (1) at the front position. Use truck bracket (2) in the two middle positions. Use truck bracket (3) at the rear position (use image in column to the left as reference). Use hardware as noted in step 1 & 2.

Note: There is a notch on the back of the bracket noting bracket 1-3.



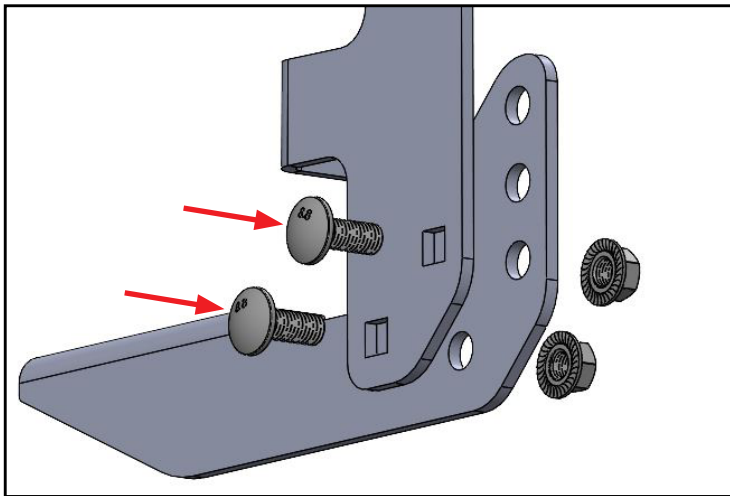
IAT-93090 1997-2003 Ford F150



STEP 4:

Before installing the board bracket (3), decide the preferred height. Here are our suggestions, but you can adjust to your preference:

- A. For 61 Series, 51 Series, & Gladiator boards.
- B. For 41 Series, CVX, & Factory Style boards (all from A).
- C. Lower position for any board.



STEP 5:

Use a carriage bolt (5) through the truck bracket (1-3) into the board bracket (4) and secure it with a serrated flange nut (6). Hand-tighten at this time.

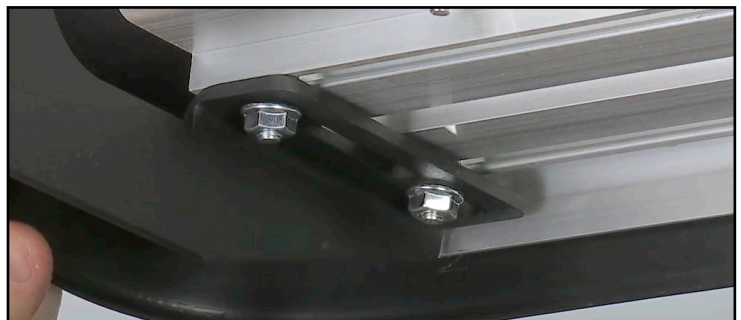
STEP 6:

With one side of the brackets installed, use a flat edge (such as a yardstick, level, or the included running board) placed on the board bracket tab. Align the brackets level to each other and fully tighten all hardware.



STEP 7:

To install running boards onto the brackets, obtain the board bolt pack included with the board you selected. Take the 5/16" X 1" long bolts, and slide the head of the bolts down the channels on the underside of the board. Use 4 bolts in both channels.



STEP 8:

Place the board on the installed mounting brackets. Align the bolts with the slots on the brackets and drop them into place. Thread the provided 5/16" flange nuts onto the bolts, but do not fully tighten yet. Adjust the board left to right and in and out to your desired position. Avoid using power or air tools. Finally, tighten all board hardware to 20ft lbs torque to secure the board to the bracket.