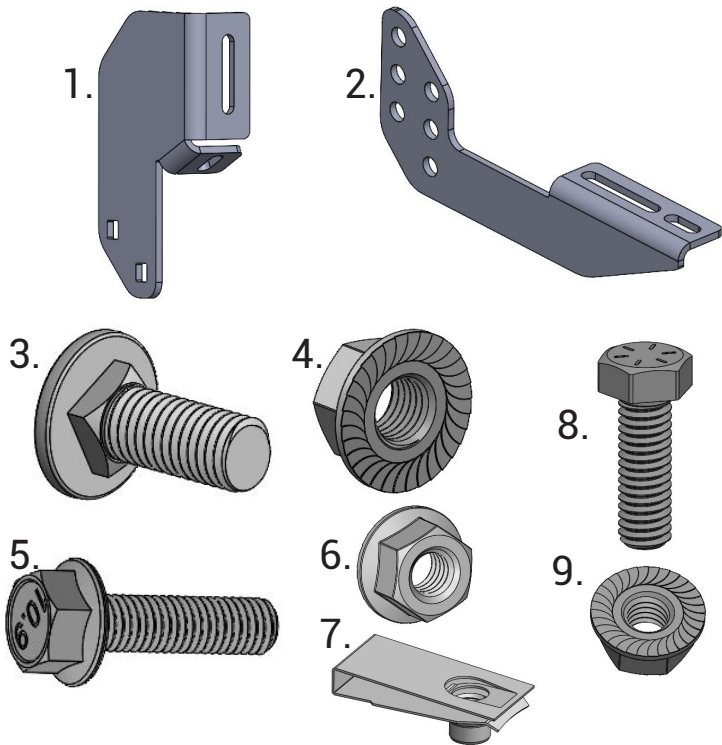
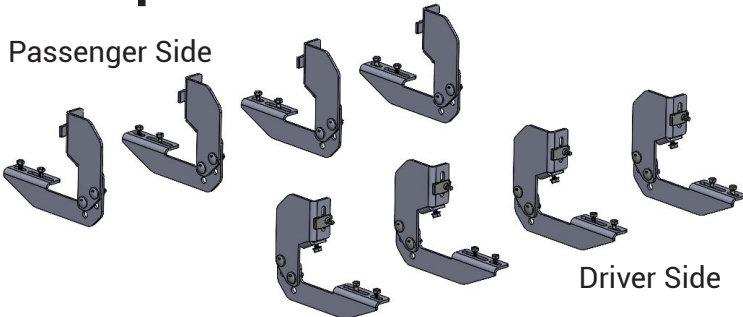


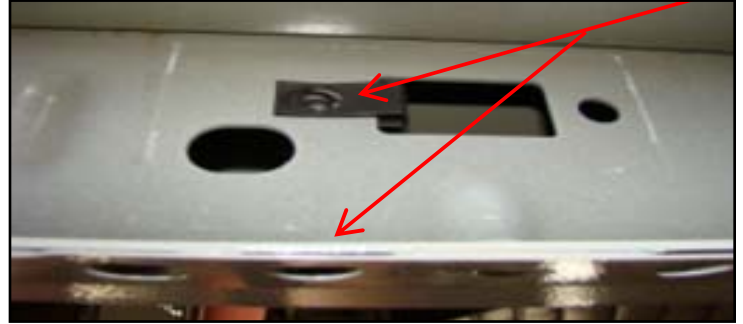
IAT-93048 2004-2014 Ford F150

Component List:



1. Truck Mount Bracket(8)
2. Board Mount Bracket.....(8)
3. Carriage Bolt M10 x 25mm.....(16)
4. Serrated Flange Nut M10.....(16)
5. Flange Hex Bolt M8 x 25mm(16)
6. Serrated Flange Nut M8.....(8)
7. Spring Clip Nut M8.....(8)
8. Hex Bolt 5/16"-18 x 1".....(12)
9. Serrated Flange Nut 5/16"-18.....(12)

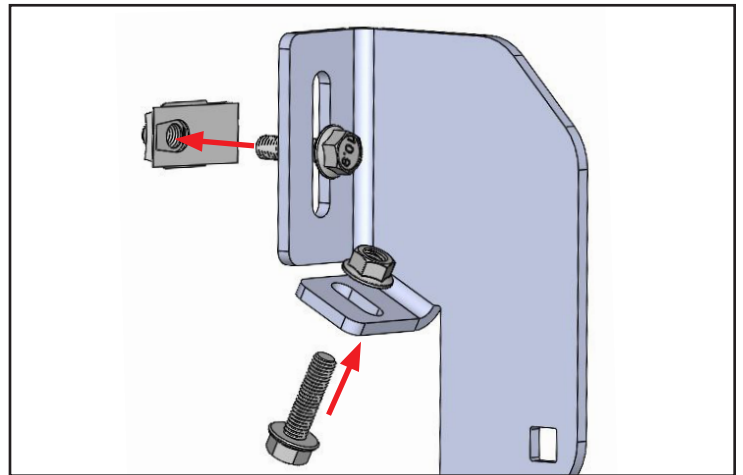
Installation Instructions:



STEP 1:

Locate factory locations on your vehicle where the pinch weld hole and hole in the rocker align. Install Spring Clip Nut (7) to the rocker as shown above.

Note: This area could be covered with tape from the factory.

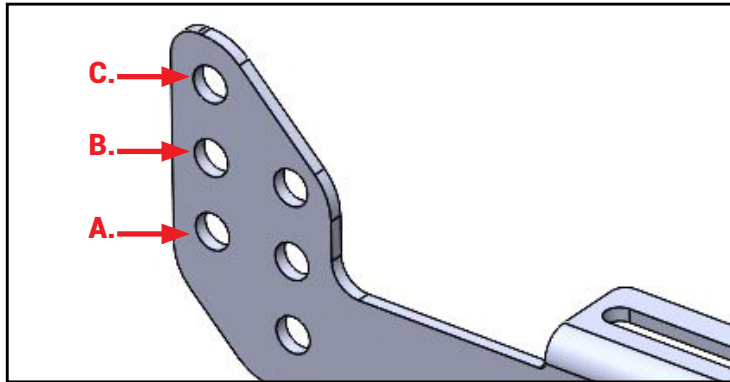


STEP 2:

Place truck bracket (1) to the rocker and use flange hex bolt (5) into spring clip installed in step 1. Now use flange hex bolt (5) through the pinch weld hole through the bracket at lower tab and secure with serrated flange nut (6). Hand tighten, do not fully tighten at this time.

Note: In the kit you are given four brackets per side. Regular and SuperCab models will use fewer brackets.

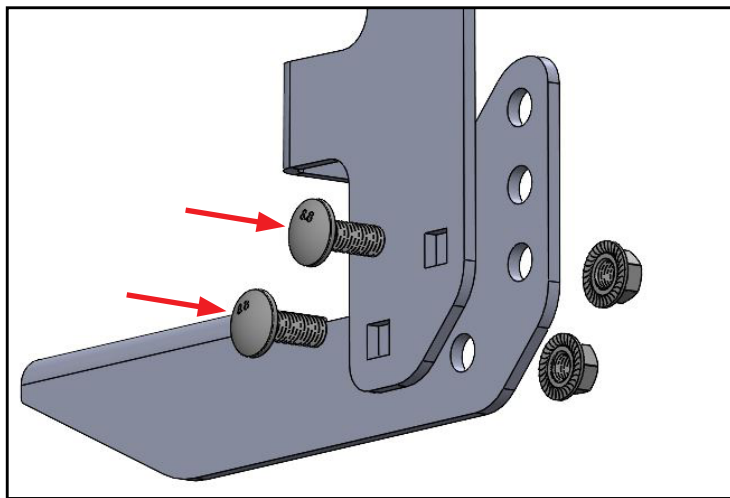
IAT-93048 2004-2014 Ford F150



STEP 3:

Before installing the board bracket (2), decide the preferred height. Here are our suggestions, but you can adjust to your preference:

- A. For 61 Series, 51 Series, & Gladiator boards.
- B. For 41 Series, CVX, & Factory Style boards (all from A).
- C. Lower position for any board.



STEP 4:

Use a carriage bolt (3) through the truck bracket (1) into the board bracket (2) and secure it with a serrated flange nut (4). Hand-tighten at this time.

STEP 5:

With one side of the brackets installed, use a flat edge (such as a yardstick, level, or the included running board) placed on the board bracket tab. Align the brackets level to each other and fully tighten all hardware.



STEP 6:

To install running boards onto the brackets, obtain the board bolt pack included with the board you selected. Take the 5/16" X 1" long bolts, and slide the head of the bolts down the channels on the underside of the board. Use 4 bolts in both channels.



STEP 7:

Place the board on the installed mounting brackets. Align the bolts with the slots on the brackets and drop them into place. Thread the provided 5/16" flange nuts onto the bolts, but do not fully tighten yet. Adjust the board left to right and in and out to your desired position. Avoid using power or air tools. Finally, tighten all board hardware to 20ft lbs torque to secure the board to the bracket.