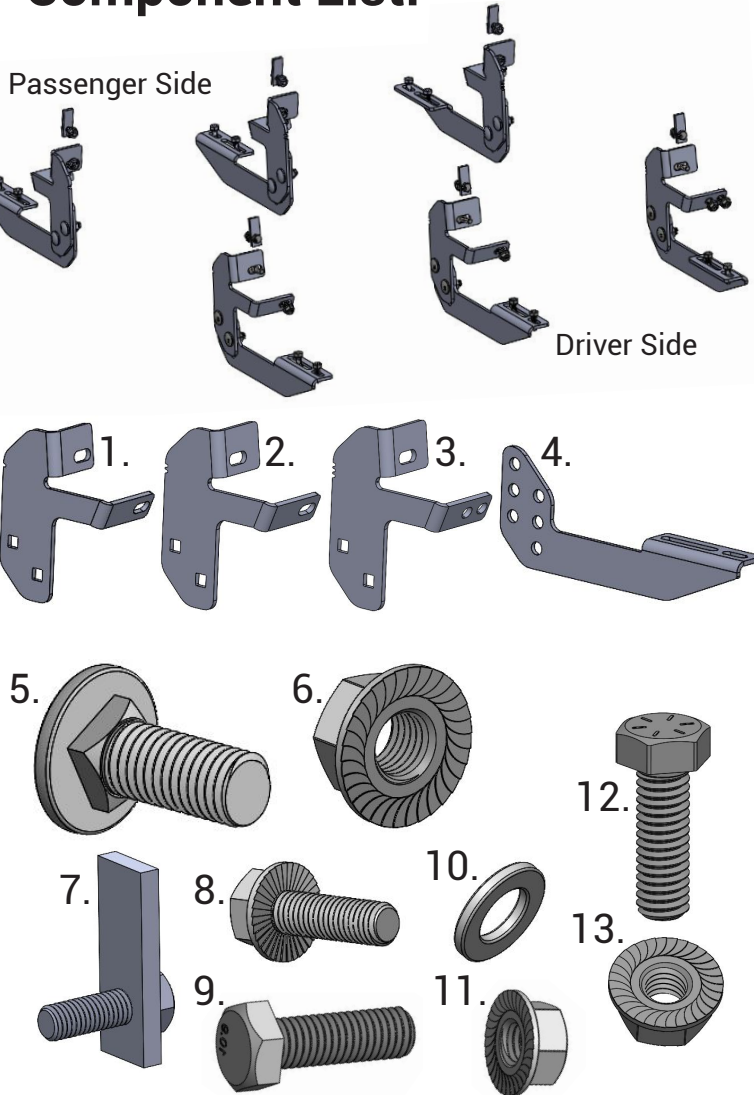


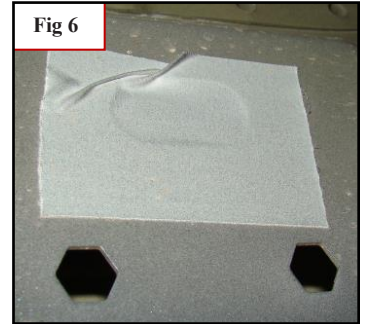
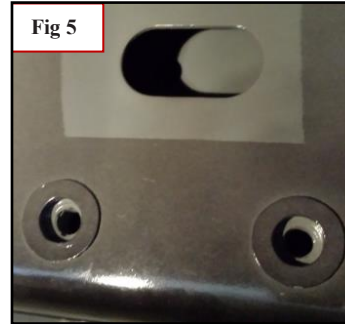
## IAT-92310 21-Current RAM 2500/5500 New Body Style

### Component List:



- |   |      |
|---|------|
| 1. Truck Mount Bracket A .....          | (2)  |
| 2. Truck Mount Bracket B .....          | (2)  |
| 3. Truck Mount Bracket C .....          | (2)  |
| 4. Board Mount Bracket .....            | (6)  |
| 5. Carriage Bolt M10 x 25mm .....       | (12) |
| 6. Serrated Flange Nut M10 .....        | (12) |
| 7. Bolt Plate M8 x 25mm .....           | (6)  |
| 8. Serrated Flange Bolt M8 x 25mm ..... | (6)  |
| 9. Hex Bolt M8 x 25mm .....             | (8)  |
| 10. Flat Washer M8 .....                | (8)  |
| 11. Serrated Flange Nut M8 .....        | (14) |
| 12. Hex Bolt 5/16"-18 x 1" .....        | (16) |
| 13. Serrated Flange Nut 5/16"-18 .....  | (16) |

### Installation Instructions:



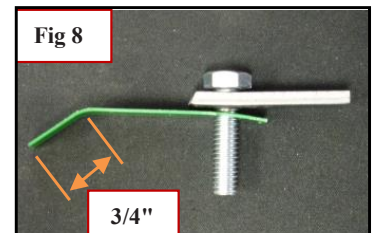
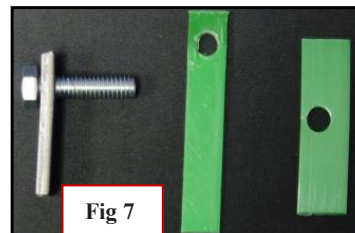
#### STEP 1:

There are 3 factory mounting location underneath your truck below the doors pictured below (Fig 5 & 6) Front, Middle and Rear on each side of the vehicle. Look for 2 hex holes or 8mm threaded inserts and a bigger oval hole with tape over it. We will only use these factory locations to mount the brackets.

**NOTE:** We need to remove the factory tape at each location. Peel it off and keep it clean. It can be put back to its original place after the bolt plate is installed.

#### STEP 2 with "Fig 5 setup":

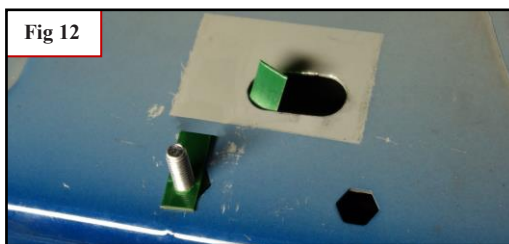
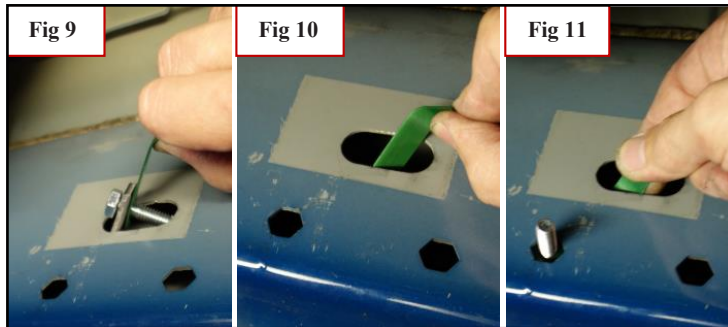
Use the serrated flange bolt (8) to mount brackets.



#### STEP 2 with "Fig 6 setup":

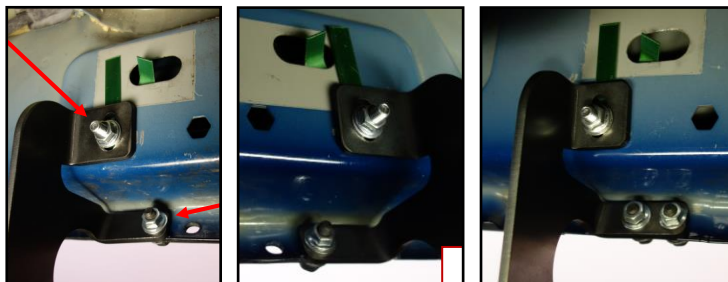
Obtain the bolt plate (7) and longer plastic retainer with hole on end. Twist on bolt like a nut until plastic almost touches metal plate. Then bend end at angle about 3/4" from end. When complete it looks like (Fig 8) and is ready to install.

## IAT-92310 21-Current RAM 2500/5500 New Body Style



### STEP 3:

Next insert the bolt plate as shown (Fig 9). You are going to rotate or twist the plastic retainer and get it to come out through the hex hole and hold it in place (Fig 11). Take one of the plastic retainers with the hole in the center (Fig 7) and screw it on to hold the bolt in place and stop it from falling in the rocker panel (Fig 12).



Front

Middle

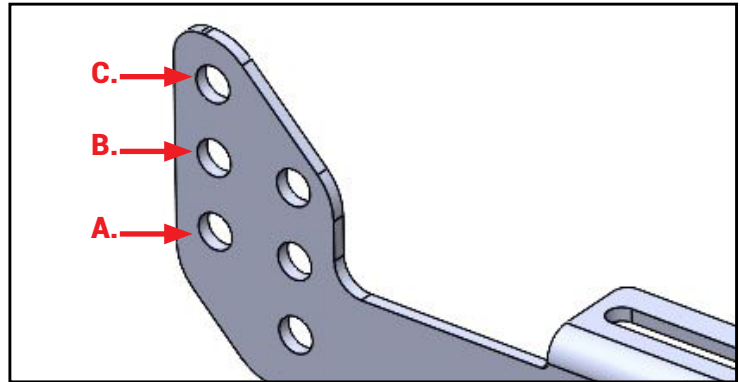
Rear

### STEP 4:

**Front & Rear Position:** Place bracket A (1) over bolt plate and attach with M8 serrated flange nut (11). At pinch weld use one M8 Bolt (8) with flat washer (9) and secure with serrated flange nut (10).

**Middle Position:** Place bracket B (2) over bolt plate and attach with M8 serrated flange nut (10). At pinch weld use two M8 Bolts (9) with flat washers (10) and secure with serrated flange nuts (11).

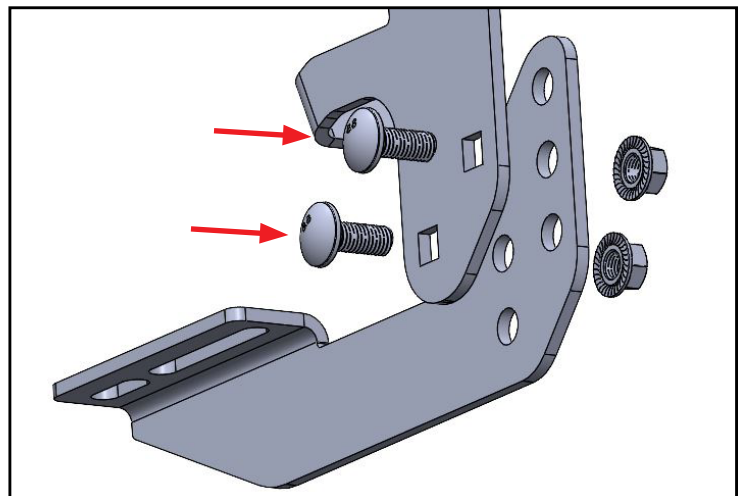
**NOTE:** Trucks that are equipped with threaded inserts will use M8 serrated flange bolt (8) instead of the bolt plate in the upper mounting location.



### STEP 5:

Before installing the board bracket (4), decide the preferred height. Here are our suggestions, but you can adjust to your preference:

- A. For 61 Series, 51 Series, & Gladiator boards.
- B. For 41 Series, CVX, & Factory Style boards (all from A).
- C. Lower position for any board.



### STEP 6:

Use a carriage bolt (5) through the truck bracket (1-3) into the board bracket (4) and secure it with a serrated flange nut (6). Hand-tighten at this time.

### STEP 7:

With one side of the brackets installed, use a flat edge (such as a yardstick, level, or the included running board) placed on the board bracket tab. Align the brackets level to each other and fully tighten all hardware.

## IAT-92310 21-Current RAM 2500/5500 New Body Style



### STEP 8:

To install running boards onto the brackets, obtain the board bolt pack included with the board you selected. Take the 5/16" X 1" long bolts, and slide the head of the bolts down the channels on the underside of the board. Use 3 bolts in both channels.



### STEP 9:

Place the board on the installed mounting brackets. Align the bolts with the slots on the brackets and drop them into place. Thread the provided 5/16" flange nuts onto the bolts, but do not fully tighten yet. Adjust the board left to right and in and out to your desired position. Avoid using power or air tools. Finally, tighten all board hardware to 20ft lbs torque to secure the board to the bracket.