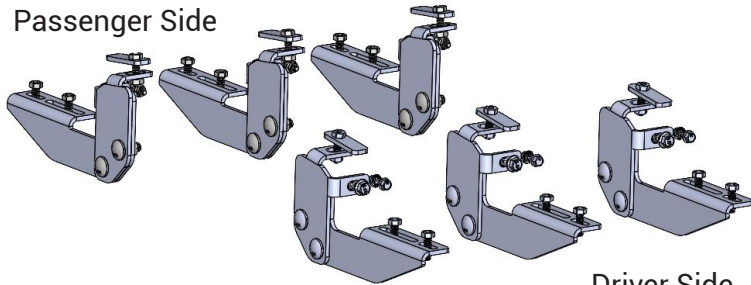


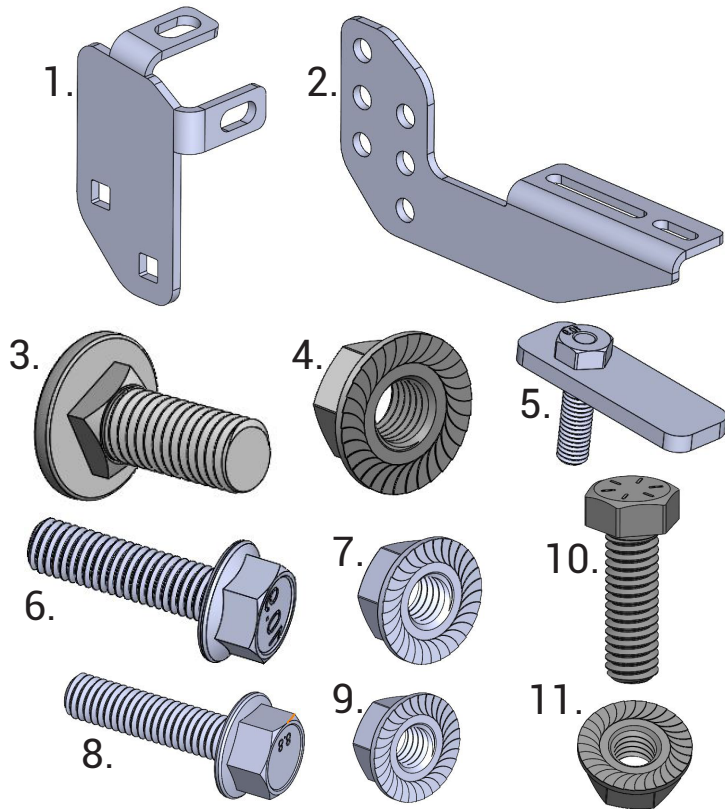
IAT-92260 2020-Current Ford Explorer

Component List:

Passenger Side

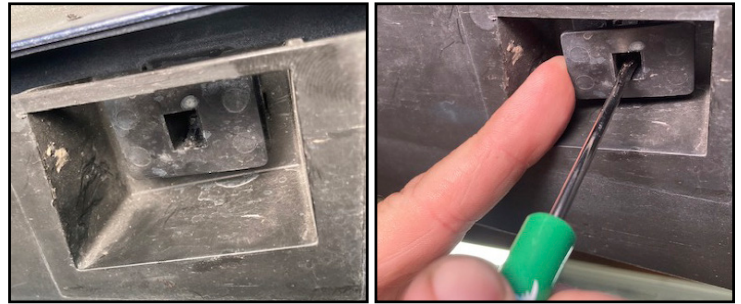


Driver Side



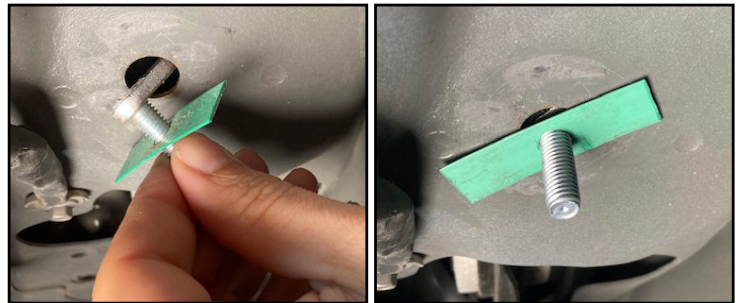
- | | |
|---------------------------------------|------|
| 1. Truck Mount Bracket | (6) |
| 2. Board Mount Bracket..... | (6) |
| 3. Bolt Plate M8 | (6) |
| 4. Carriage Bolt M10 x 25mm..... | (12) |
| 5. Serrated Flange Nut M10..... | (12) |
| 6. Flange Bolt M8 x 30mm..... | (6) |
| 7. Serrated Flange Nut M8..... | (12) |
| 8. Flange Bolt M6 x 25mm..... | (2) |
| 9. Serrated Flange Nut M6..... | (2) |
| 10. Hex Bolt 5/16"-18 x 1" | (12) |
| 11. Serrated Flange Nut 5/16"-18..... | (12) |

Installation Instructions:



STEP 1:

Release all the clips on the underside of the plastic rocker cover. These clips require using a small screwdriver or pick. Use either tool to pry and release the clip as shown above. With all the clips released will allow the rocker panel to be loose enough to access mounting holes at the pinch-weld.

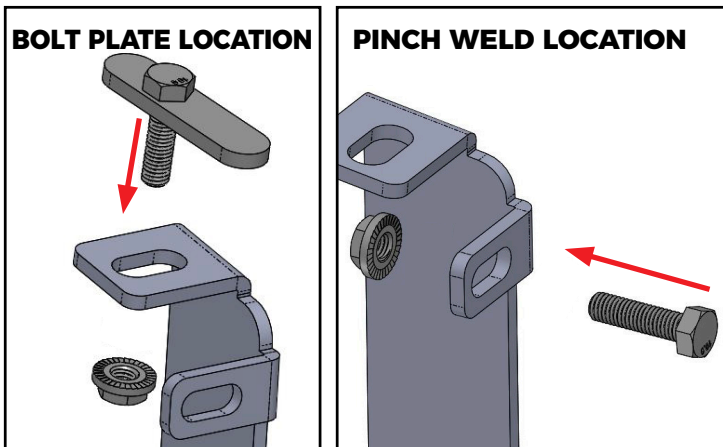


STEP 2:

Each of the bolt plates (5) will require threading on the plastic retainer. The retainer assist with holding bolt plate in place and keeps it from being pushed inside the body of your vehicle.

With retainer threaded to the stud feed through the hole and rotate the stud to face out. Next hold the stud and thread the retainer down the stud to hold it tight against the body.

IAT-92260 2020-Current Ford Explorer

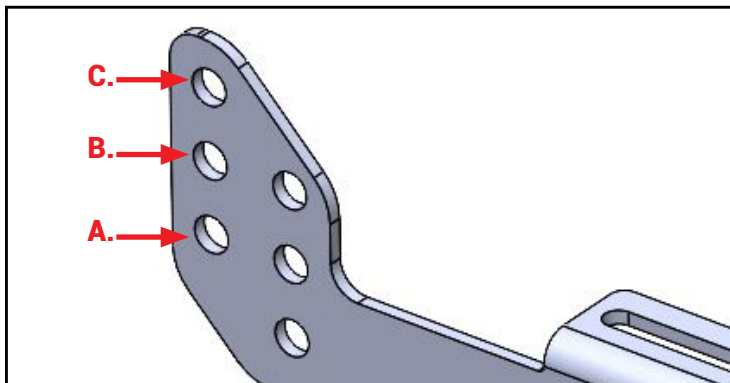


STEP 3:

Place truck bracket (1) over the bolt plate (5) installed and hand tighten serrated flange nut (7).

Now use flange bolt (6) through the pinch weld hole, through the bracket's lower tab and secure with serrated flange nut (7). Hand tighten at this time.

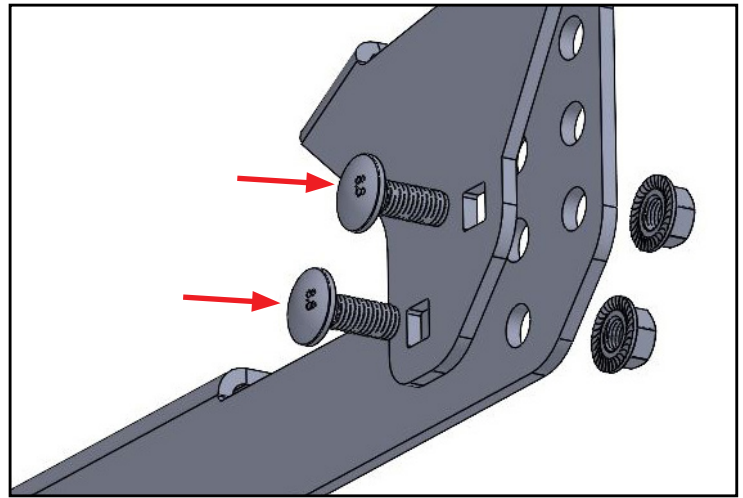
Note: The pinch weld hole for the middle position is slightly smaller hole. The hardware kit includes a M6 bolt (8) and nut (9) to accommodate this smaller hole size. If you face issues fitting the M8 hardware, then use the M6 hardware instead.



STEP 4:

Before installing the board bracket (2), decide the preferred height. Here are our suggestions, but you can adjust to your preference:

- A. For 61 Series, 51 Series, & Gladiator boards.
- B. For 41 Series, CVX, & Factory Style boards (all from A).
- C. Lower position for any board.



STEP 5:

Use a carriage bolt (3) through the truck bracket (1) into the board bracket (2) and secure it with a serrated flange nut (4). Hand-tighten at this time.

STEP 6:

With one side of the brackets installed, use a flat edge (such as a yardstick, level, or the included running board) placed on the board bracket tab. Align the brackets level to each other and fully tighten all hardware.



STEP 7:

To install running boards onto the brackets, obtain the board bolt pack included with the board you selected. Take the 5/16" X 1" long bolts, and slide the head of the bolts down the channels on the underside of the board. Use 3 bolts in both channels.

IAT-92260 2020-Current Ford Explorer



STEP 8:

Place the board on the installed mounting brackets. Align the bolts with the slots on the brackets and drop them into place. Thread the provided 5/16" flange nuts onto the bolts, but do not fully tighten yet. Adjust the board left to right and in and out to your desired position. Avoid using power or air tools. Finally, tighten all board hardware to 20ft lbs torque to secure the board to the bracket.