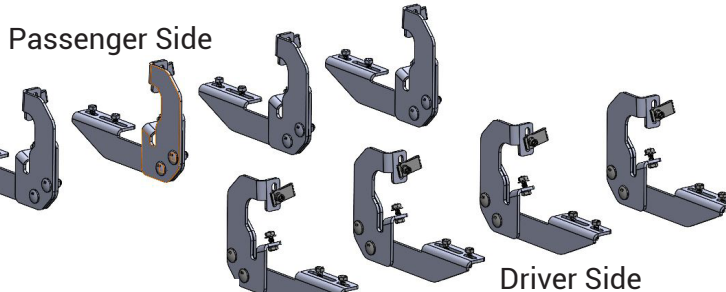


IAT-91071 2007-2019 GM 1500 - 3500

Component List:



1. Truck Mount Bracket	(8)
2. Board Mount Bracket.....	(8)
3. Carriage Bolt M10 x 25mm.....	(16)
4. Serrated Flange Nut M10.....	(16)
5. Spring Clip M8.....	(8)
6. Hex Bolt M8 x 20mm (zinc finish)	(8)
7. Hex Bolt M8 x 25mm (black finish)	(8)
8. Flat Washer M8 (zinc finish).....	(8)
9. Flat Washer M8 (black finish).....	(8)
10. Serrated Flange Nut M8.....	(8)
11. Hex Bolt 5/16\"-18 x 1\"	(16)
12. Serrated Flange Nut 5/16\"-18.....	(16)

Installation Instructions:

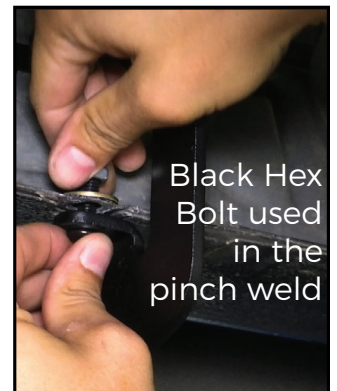
STEP 1:

Each truck bracket (1) consist of two mounting holes. The upper large hole mounts to the body of the truck and the lower smaller hole to the pinch weld.



STEP 2:

Insert spring clip (5) to the body of the truck. Install only one in the rear of the truck on 1500 models. All three locations for 2500 and 3500 models.

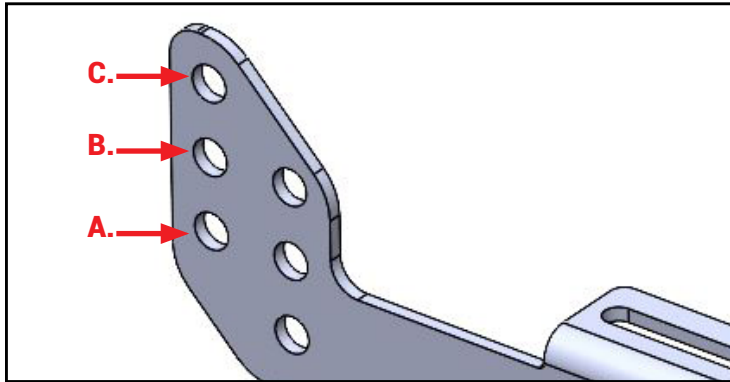


STEP 3:

Mount the truck bracket (1) to the body of the truck at the upper larger hole using an M8 bolt (6) and washer (8). Then, attach the pinch weld with an M8 bolt (7) and washer (9). For locations without a welded nut on the pinch weld, use the provided flange nut (10).

Note: The zinc-finished hardware is used at the body upper holes, and black hardware is used at the pinch weld.

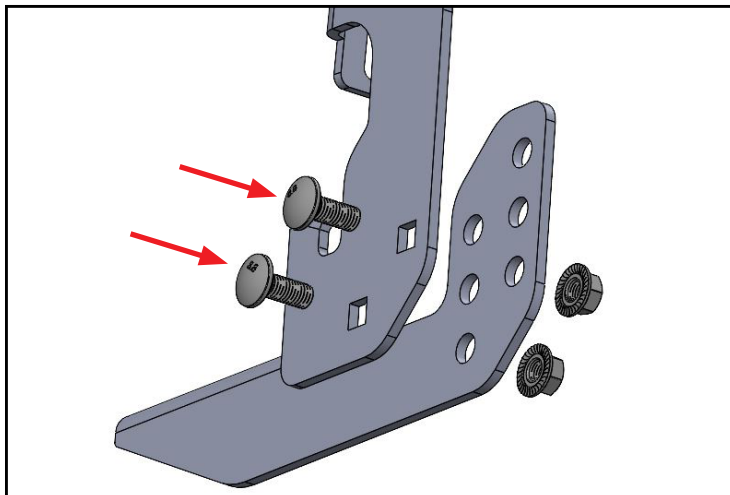
IAT-91071 2007-2019 GM 1500 - 3500



STEP 4:

Before installing the board bracket (2), decide the preferred height. Here are our suggestions, but you can adjust to your preference:

- A. For 61 Series, 51 Series, & Gladiator boards.
- B. For 41 Series, CVX, & Factory Style boards (all from A).
- C. Lower position for any board.



STEP 5:

Use a carriage bolt (3) through the truck bracket (1) into the board bracket (2) and secure it with a serrated flange nut (4). Hand-tighten at this time.

STEP 6:

With one side of the brackets installed, use a flat edge (such as a yardstick, level, or the included running board) placed on the board bracket tab. Align the brackets level to each other and fully tighten all hardware.



STEP 7:

To install running boards onto the brackets, obtain the board bolt pack included with the board you selected. Take the 5/16" X 1" long bolts, and slide the head of the bolts down the channels on the underside of the board. Use 4 bolts in both channels.



STEP 8:

Place the board on the installed mounting brackets. Align the bolts with the slots on the brackets and drop them into place. Thread the provided 5/16" flange nuts onto the bolts, but do not fully tighten yet. Adjust the board left to right and in and out to your desired position. Avoid using power or air tools. Finally, tighten all board hardware to 20ft lbs torque to secure the board to the bracket.