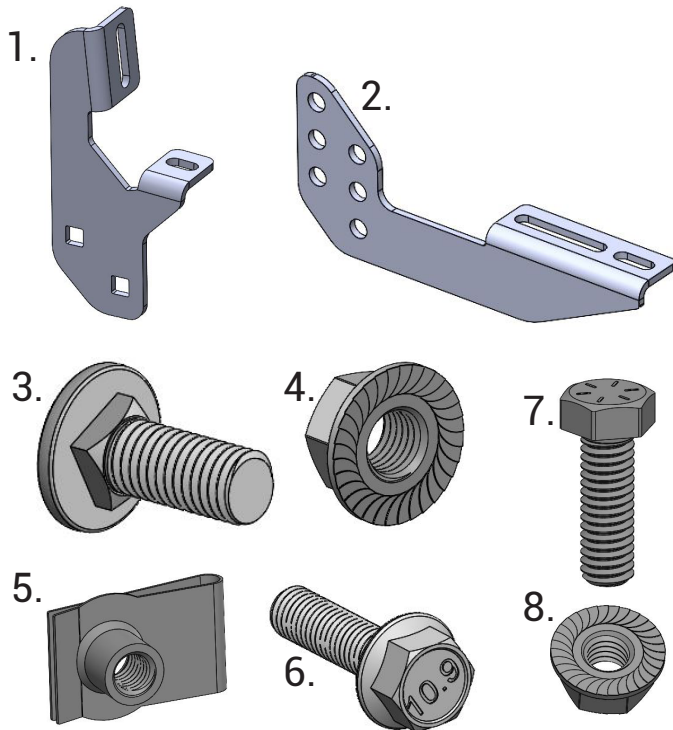
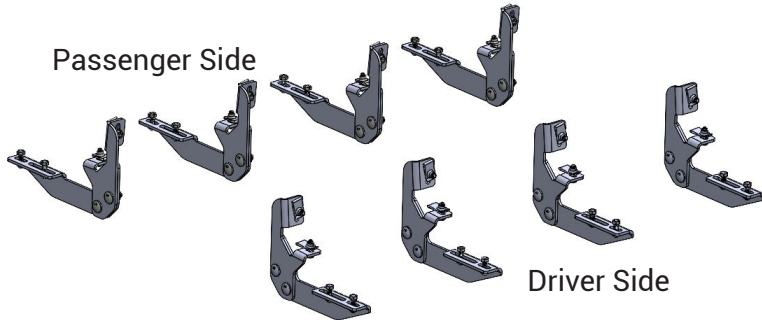


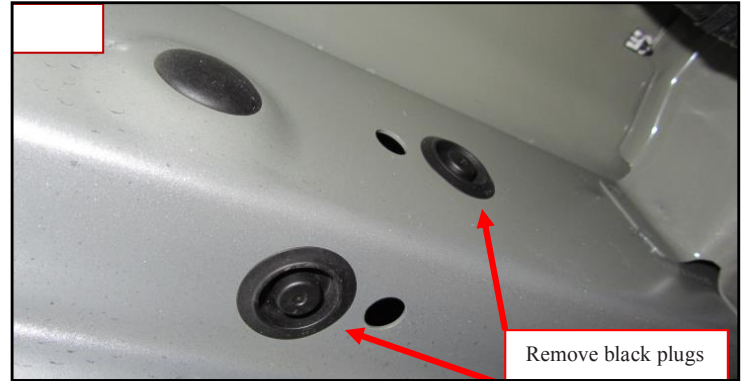
IAT-91050 GM Colorado / Canyon

Component List:



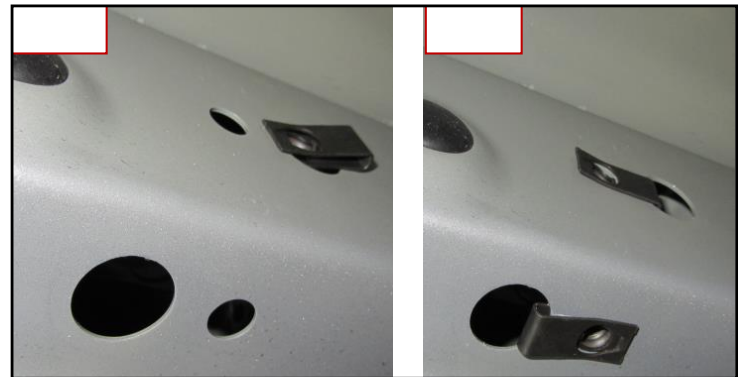
- | | |
|--|------|
| 1. Truck Mount Bracket | (8) |
| 2. Board Mount Bracket..... | (8) |
| 3. Carriage Bolt M10 x 25mm..... | (16) |
| 4. Serrated Flange Nut M10..... | (16) |
| 5. Spring Clip M8..... | (16) |
| 6. Serrated Flange Bolt M8 x 25mm..... | (16) |
| 7. Hex Bolt 5/16"-18 x 1"..... | (16) |
| 8. Serrated Flange Nut 5/16"-18..... | (16) |

Installation Instructions:



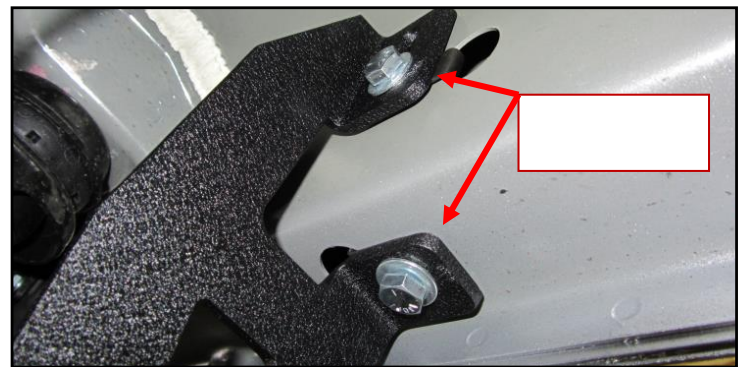
STEP 1:

There are 4 locations on each side of the vehicle, as shown here. Please remove all black plugs from each location.



STEP 2:

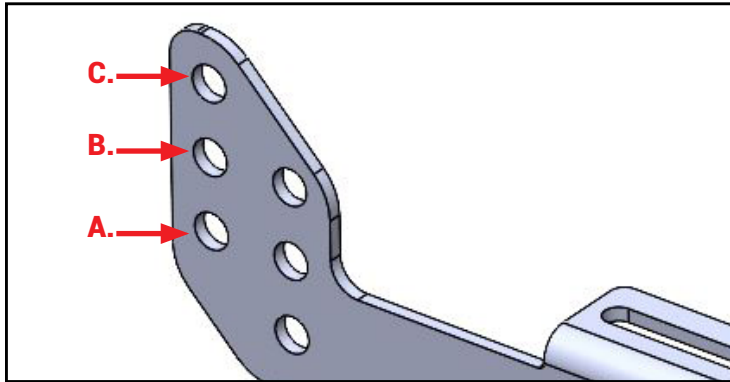
Install Spring Clips (5) into the holes as shown.



STEP 3:

Install truck mount brackets (1) onto the truck into the spring clips (5) using serrated flange bolts (6).

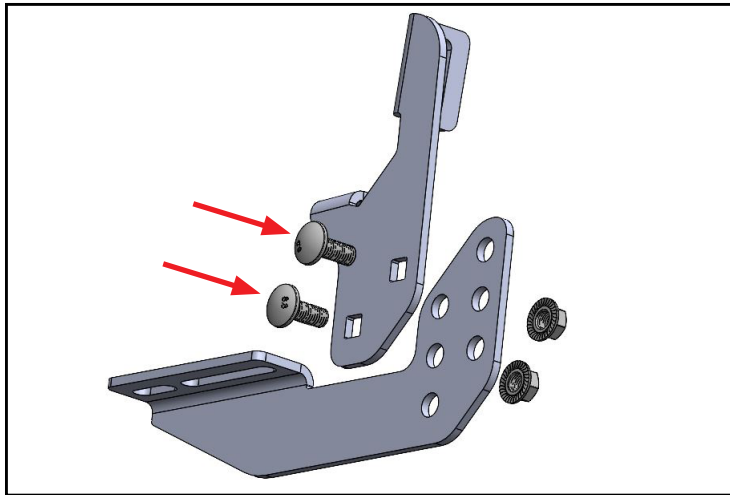
IAT-91050 GM Colorado / Canyon



STEP 4:

Before installing the board bracket (2), decide the preferred height. Here are our suggestions, but you can adjust to your preference:

- A. For 61 Series, 51 Series, & Gladiator boards.
- B. For 41 Series, CVX, & Factory Style boards (all from A).
- C. Lower position for any board.



STEP 5:

Use a carriage bolt (3) through the truck bracket (1) into the board bracket (2) and secure it with a serrated flange nut (4). Hand-tighten at this time.

STEP 6:

With one side of the brackets installed, use a flat edge (such as a yardstick, level, or the included running board) placed on the board bracket tab. Align the brackets level to each other and fully tighten all hardware.



STEP 7:

To install running boards onto the brackets, obtain the board bolt pack included with the board you selected. Take the 5/16" X 1" long bolts, and slide the head of the bolts down the channels on the underside of the board. Use 4 bolts in both channels.



STEP 8:

Place the board on the installed mounting brackets. Align the bolts with the slots on the brackets and drop them into place. Thread the provided 5/16" flange nuts onto the bolts, but do not fully tighten yet. Adjust the board left to right and in and out to your desired position. Avoid using power or air tools. Finally, tighten all board hardware to 20ft lbs torque to secure the board to the bracket.