



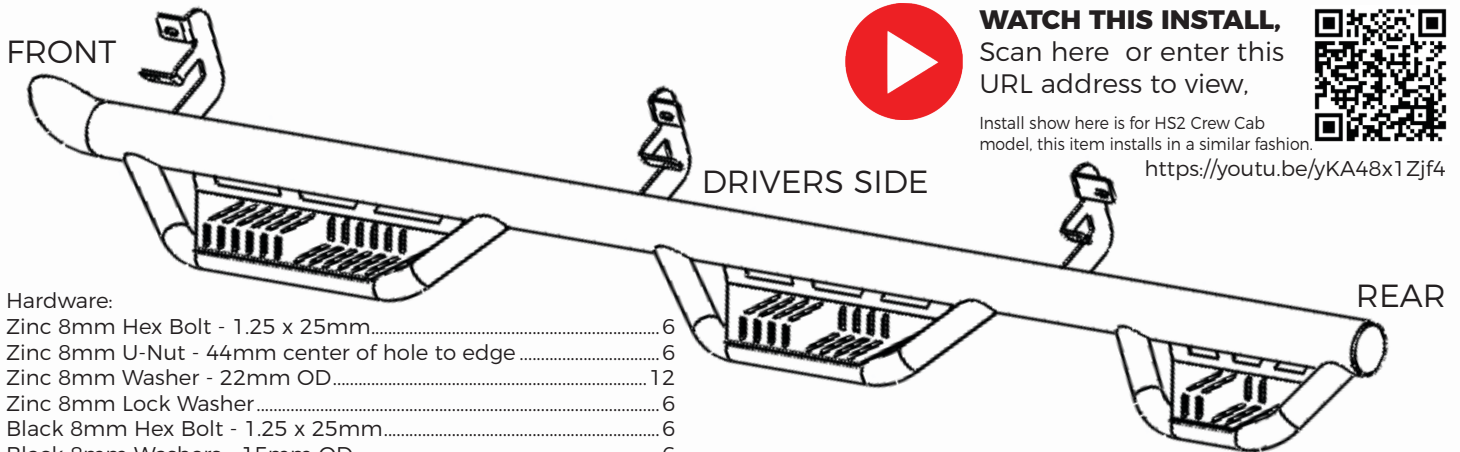
INSTALLATION INSTRUCTIONS

HAVOC HS3

NERF BAR WITH STEP

HPG-003204

2015-2018 RAM 1500 CREW CAB 6'4" BED (+19-23 1500 CLASSIC)



WATCH THIS INSTALL,
Scan here or enter this URL address to view,



Install show here is for HS2 Crew Cab model, this item installs in a similar fashion.

<https://youtu.be/yKA48x1Zjf4>

Hardware:

Zinc 8mm Hex Bolt - 1.25 x 25mm.....	6
Zinc 8mm U-Nut - 44mm center of hole to edge.....	6
Zinc 8mm Washer - 22mm OD.....	12
Zinc 8mm Lock Washer.....	6
Black 8mm Hex Bolt - 1.25 x 25mm.....	6
Black 8mm Washers - 15mm OD.....	6
Black 8mm Serrated Flange Nut.....	6

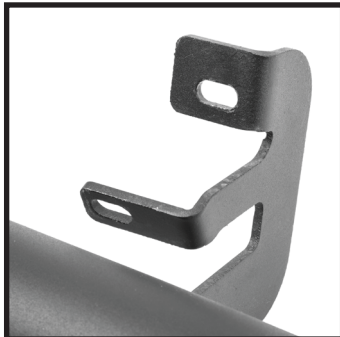
STEP 1:

Identify the driver and passenger bars. The rear side is the smallest step on the bar. This goes towards the rear tire.



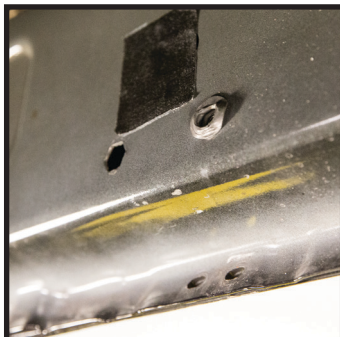
STEP 2:

Each mounting bracket consist of 2 mounting holes. The upper hole mounts to the body of the truck and the lower hole to the pinch weld.



STEP 3:

Remove OE boards if equipped then locate mounting holes. In some cases there are threaded inserts installed by the factory (shown here). If not insert the provided U nuts in upper mounting holes



STEP 4:

Carefully place HS2 step onto Place. Hand tightening the upper center bolt with washers to hold in place. Best to have a assistant to lift and hold board in place. Insert and hand tightening rear and front upper bolts.



STEP 5:

Insert black bolt with zinc washer from the back then through the pinch weld holes. On the front add back washer and black serrated flange nut.



STEP 6:

Begin tightening nuts & bolts in a alternating pattern. **Avoid using power or air tools.** Tighten to 20ft lbs torque to secure the board to the truck. Repeat the same procedure to the other side.

