



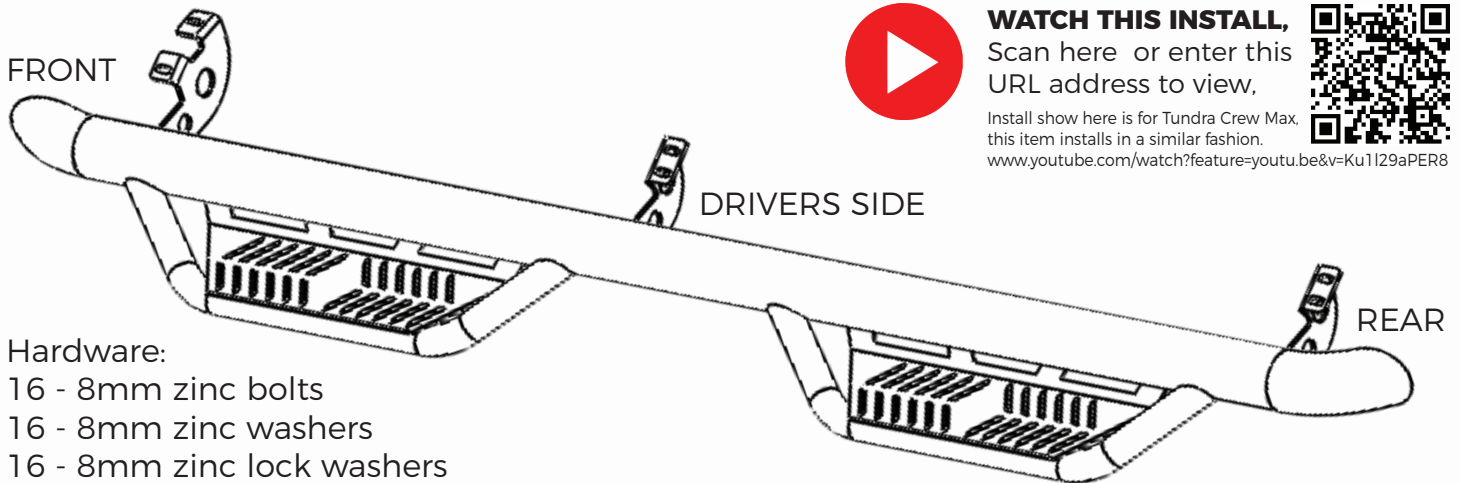
INSTALLATION INSTRUCTIONS

HAVOC HS2

NERF BAR WITH STEP

HPG-001410

2005-2023 TOYOTA TACOMA DOUBLE CAB



Hardware:
16 - 8mm zinc bolts
16 - 8mm zinc washers
16 - 8mm zinc lock washers



WATCH THIS INSTALL,
Scan here or enter this
URL address to view,

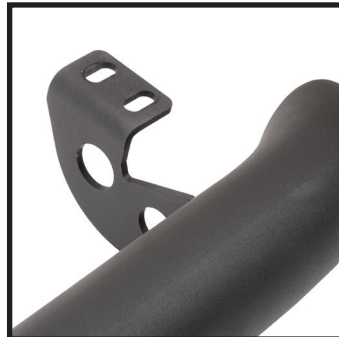


Install show here is for Tundra Crew Max,
this item installs in a similar fashion.
www.youtube.com/watch?feature=youtu.be&v=Ku1I29aPER8

STEP 1:
Identify the driver and passenger bars. The first bracket has a large notch between the two mounting holes. This bracket goes to the front of the truck.



STEP 2:
Each mounting bracket consist of 2 mounting holes.



STEP 3:
Remove OE boards if equipped then locate mounting holes. Clean any dirt and debris from mounting holes and surface.



STEP 4:
Carefully place HS2 step onto Place. Hand tightening the upper center bolt with washers to hold in place. Best to have a assistant to lift and hold board in place. Now hand tightening remaining mounts bolts.



STEP 5:
Begin tightening bolts in a alternating pattern. **Avoid using power or air tools.** Over tightening could stripe or break the OE threaded inserts.



STEP 6:
Tighten to 20ft lbs torque to secure the board to the truck. Repeat the same procedure to the other side.

