



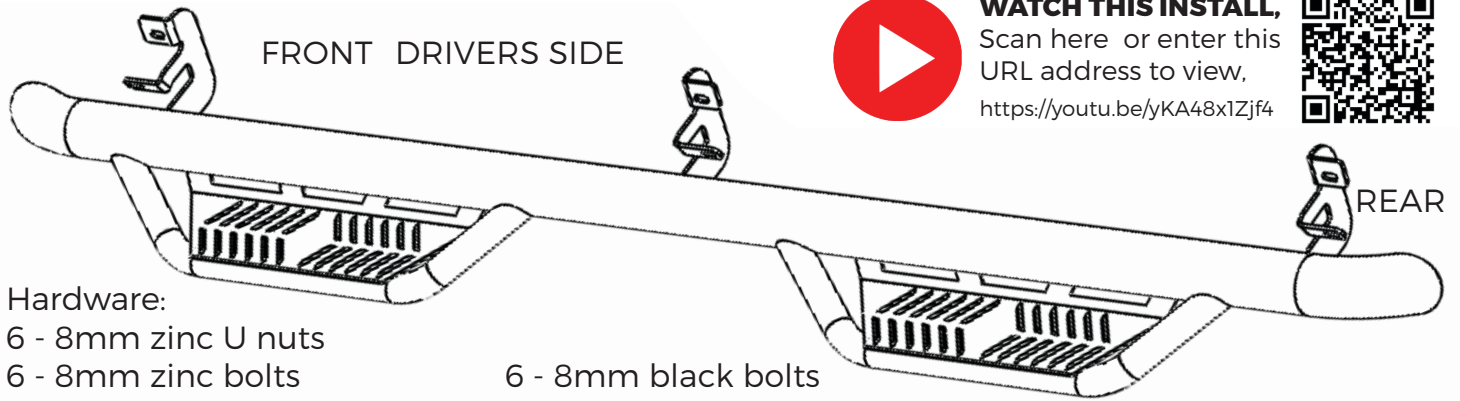
INSTALLATION INSTRUCTIONS

HAVOC HS2

NERF BAR WITH STEP

HPG-001203

2015-2018 RAM 1500 CREW CAB (+19-23 1500 CLASSIC)
2015-CURRENT RAM HD CREW CAB



WATCH THIS INSTALL,
Scan here or enter this
URL address to view,
<https://youtu.be/yKA48x1Zjf4>

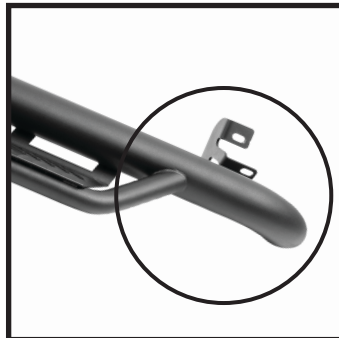


Hardware:

- 6 - 8mm zinc U nuts
- 6 - 8mm zinc bolts
- 6 - 8mm zinc lock washers
- 12 - 8mm zinc washers
- 6 - 8mm black bolts
- 6 - 8mm black washers
- 6 - 8mm Nyloc nuts

STEP 1:

Identify the driver and passenger bars. The rear bracket is closer to the end of the bar. Use this to determine each side.



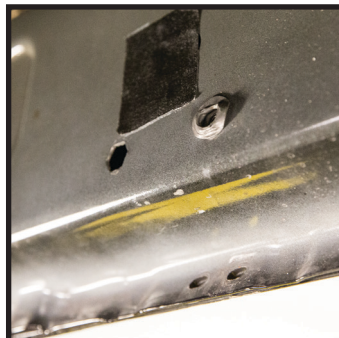
STEP 2:

Each mounting bracket consist of 2 mounting holes. The upper hole mounts to the body of the truck and the lower hole to the pitch weld.



STEP 3:

Remove OE boards if equipped then locate mounting holes. In some cases there are threaded inserts installed by the factory (shown here). If not insert the provided U nuts in upper mounting holes



STEP 4:

Carefully place HS2 step onto Place. Hand tightening the upper center bolt with washers to hold in place. Best to have a assistant to lift and hold board in place. Insert and hand tightening rear and front upper bolts.



STEP 5:

Insert black bolt with zinc washer from the back then through the pinch weld holes. On the front add back washer and black Nyloc nut.



STEP 6:

Begin tightening nuts & bolts in a alternating pattern. **Avoid using power or air tools.** Tighten to 20ft lbs torque to secure the board to the truck. Repeat the same procedure to the other side.

