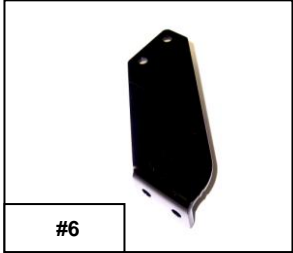


**Installation Instructions
 Alluminum Push Bumper Part # 5342A
 2016 Ford Police Interceptor Utility Non Eco Boost
 Do not attempt to install this product on any vehicle other than the one listed above!**

Parts List

Item	Qty.	Part #	Description	Torque
1	24		3/8" x 1" Hex Bolt	30 Ft. Lbs.
2	24		3/8" Lock Washer	
3	24		3/8" Hex Nut	30 Ft. Lbs.
4	2	534222	Main Bracket	
5	2	534010	Clamp Bracket	
6	2	534031	Passenger Side Extension Bracket	
7	2	534032	Driver Side Extension Bracket	



Tool Required:
 Metric Sockets & Wrenches
 Standard Sockets & Wrenches
 Ratchet & Ratchet Extensions
 Utility Knife
 Tape Rule

Approximate installation time: 60 min

Read the installation instructions completely and verify that all of the parts listed are accounted for. If you have defective, missing or damaged parts or need assistance, please contact *Go Rhino Products* for fast, friendly customer service at: 1-888-427-4466 or email: warranty@gorhino.com

Front Bumper Fascia Removal

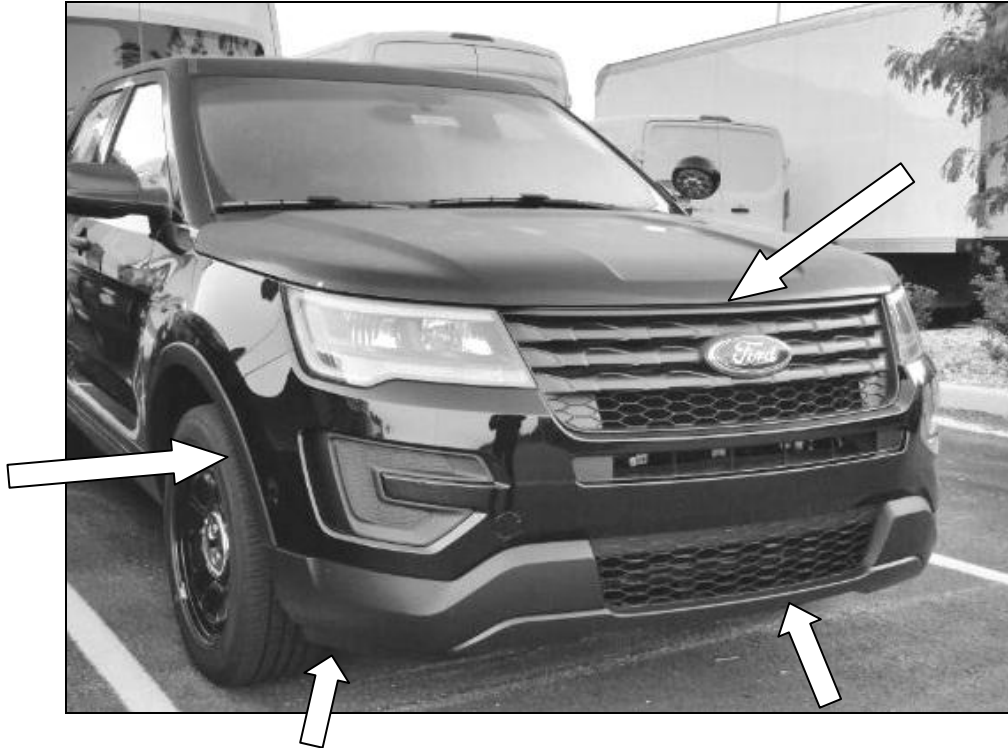
Step-1 Open the hood, locate and remove the plastic connectors securing the radiator cover and hex bolts securing the top of the front bumper fascia.

Step-2 On each side, remove the screws securing the fender liner and fender molding to the front bumper fascia. Pull the fender liner back to expose and remove the bolts securing the front bumper fascia to the front fender.

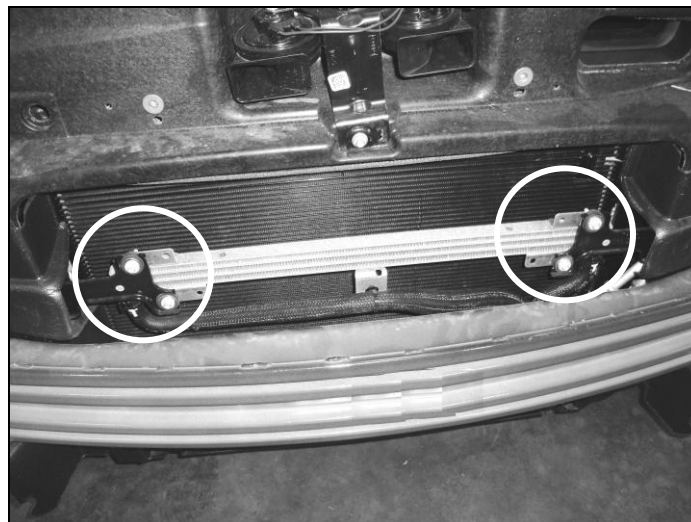
Step-3 On each side remove the screws securing the fender liner to the bottom of the front bumper fascia.

Step-4 Remove the bolts securing the bottom center of the front bumper fascia to the core support.

Step-5 With assistance pull out on the sides to release the corners of the front bumper fascia and forward to remove it from the vehicle. **Note:** Unplug the fog lights if equipped.



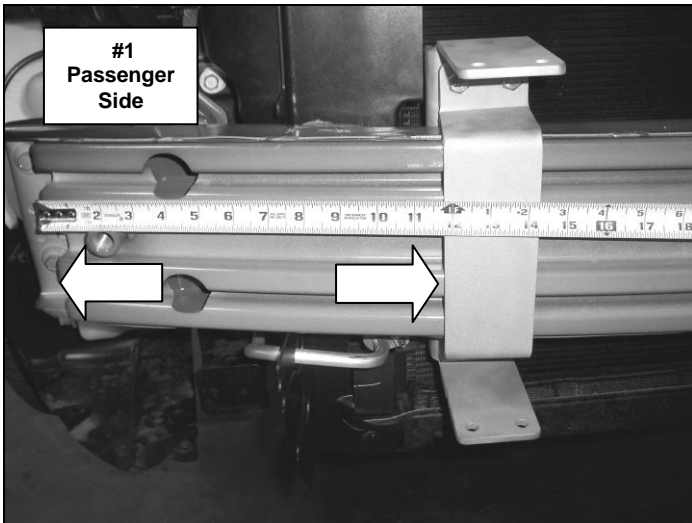
Step-6 Remove the (4) hex bolts securing the oil cooler, to allow access for placement of the main brackets behind the impact beam.



Push Bumper Installation

Step-1 Remove the (4) hex bolts securing the oil cooler, to allow access for placement of the main brackets behind the impact beam.

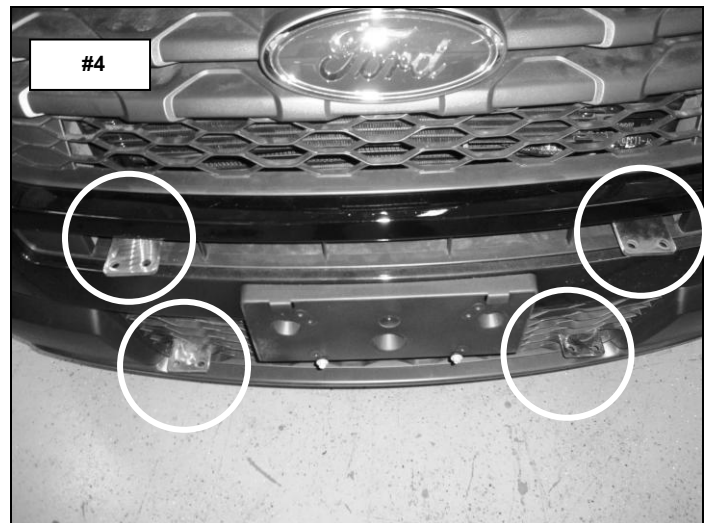
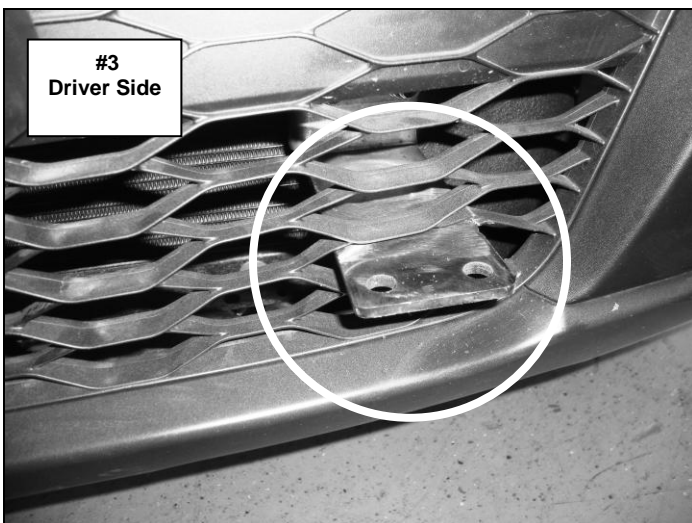
Step-2 Beginning with the passenger side, assemble and attach one of the main and clamp brackets to the steel impact beam using (4) 3/8" X 1" hex bolts, (4) 3/8" lock washer and (4) 3/8" hex nuts. Position the top and bottom edge of the bracket assembly approximately 11 3/4" from the end of the impact beam and tighten the nuts and bolts, (Photo 1 & 2). Repeat this step for the driver side.



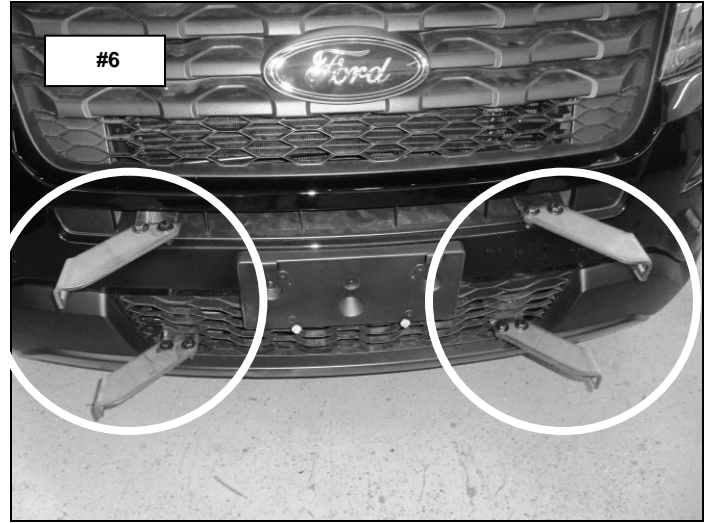
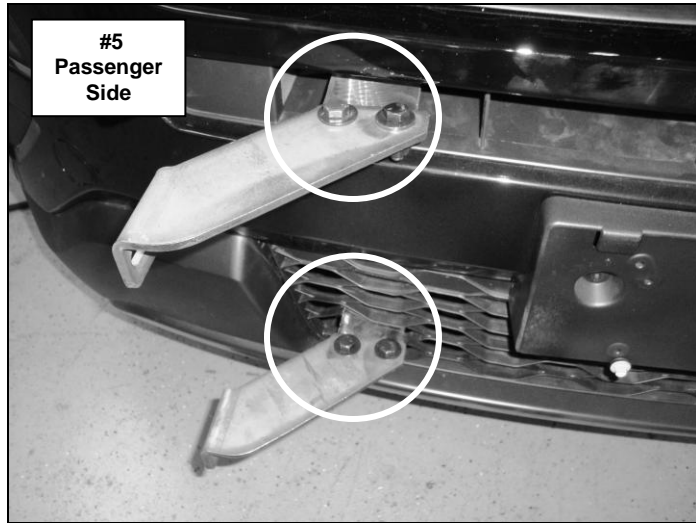
Step-4 Reinstall the oil cooler using the factory bolts.

Step-5 A section of webbing in each side of the lower grille must be cut out for the lower leg of the main brackets to extend through. Re-position the fascia on the vehicle, then cut and remove the webbing from each side of the lower grille as shown, (Photo 3).

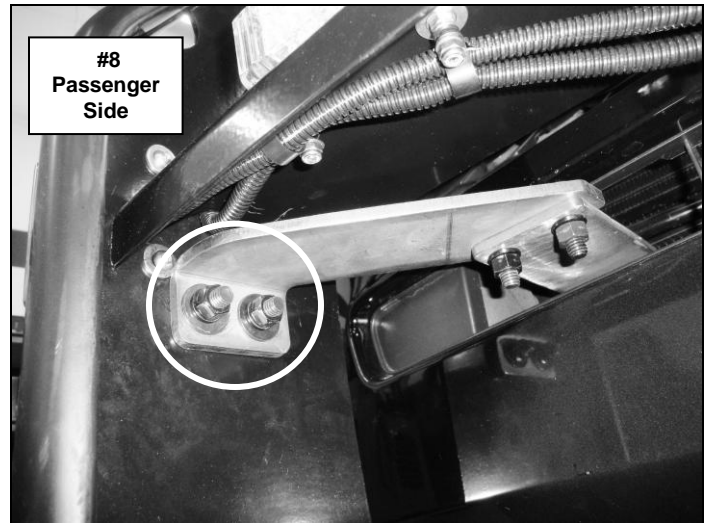
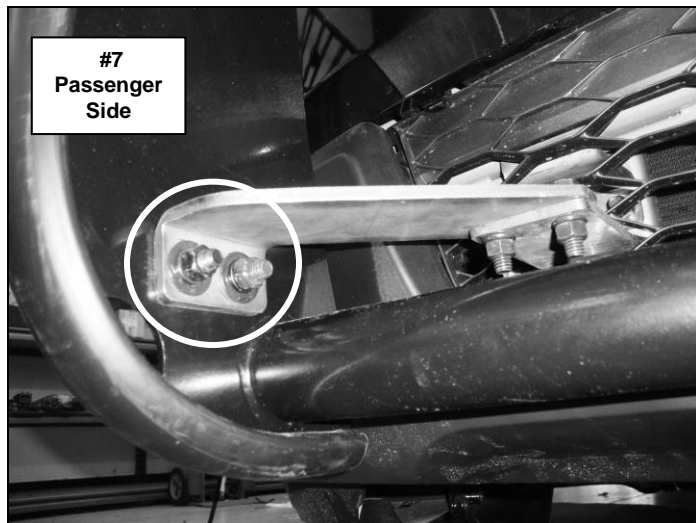
Step-6 Reinstall the front bumper fascia reversing the above steps, and that the main bracket protrude through the fascia, (Photo 4).



Step-7 Attach each of the passenger side extension brackets to the main bracket using (2) 3/8" x 1" hex bolts, (2) 3/8" lock washers and (2) 3/8" hex nuts, (Photo 5). Leave the nuts and bolts loose for final adjustment. Repeat this step for the driver side, (Photo 6).



Step-8 Attach the push bumper to each of the extension brackets using (2) 3/8" x 1" hex bolts, (2) 3/8" lock washers and (2) 3/8" hex nuts, (Photo 7 & 8). Leave the nuts and bolts loose for final adjustment.



Step-9 Align the push bumper with the vehicle and tighten all nuts and bolts, (Photo 9 & 10).

