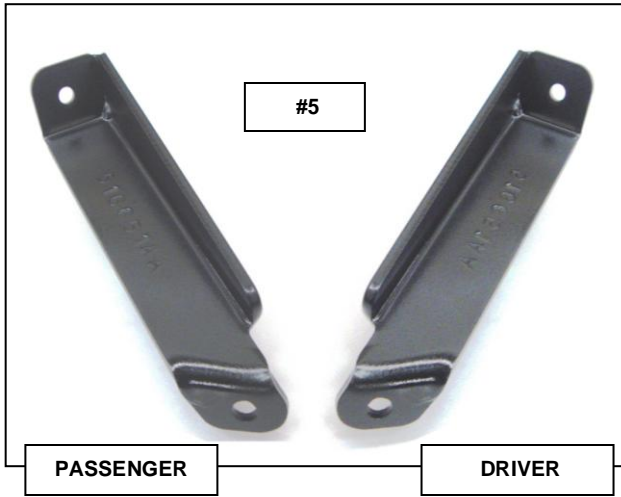


Installation Instructions
Road Defender Brush Guards Part # 5167WHD
2015 Chevrolet Tahoe PPV

Do not attempt to install this product on any vehicle other than the one listed above!

Parts List

Item	Qty.	Part #	Description	Torque
1	12		3/8" x 1 1/4" Hex Bolt	30 Ft. Lbs.
2	12		3/8" Lock Washer	
3	12		3/8" Hex Nut	30 Ft. Lbs.
4	1 Pr	5167WHD	Heavy Duty Brush Guard	
5	1 Pr	516651AA	Brush Guard Bracket	



Tool Required:
1/4" Drive 7mm, 10mm, & 13mm Socket
3/8" Drive 13mm & 9/16" Socket
9/16" Wrench
1/4" and 3/8" Drive Ratchet
Flat Blade Screw Driver
Drill Motor
3/4" Diameter Hole Saw

Approximate installation time: 45 min

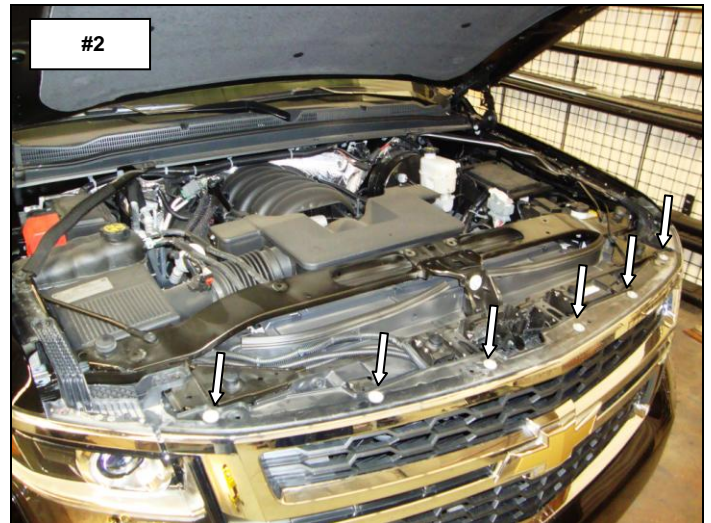
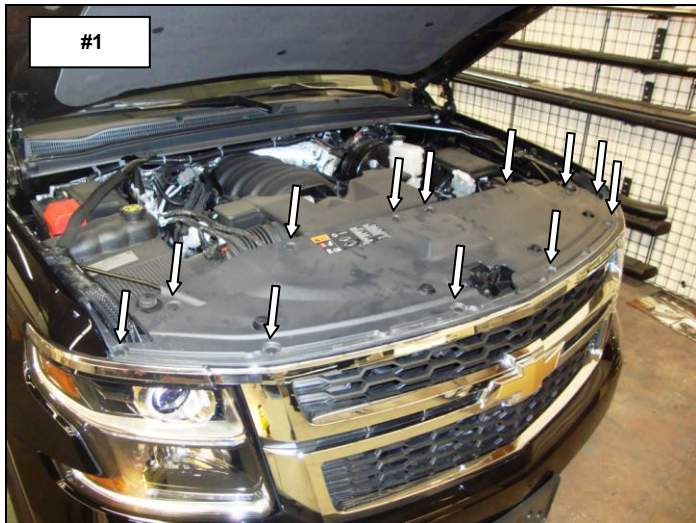
Read the installation instructions completely and verify that all of the parts listed are accounted for. If you have defective, missing or damaged parts or need assistance, please contact *Go Rhino Products* for fast, friendly customer service at: 1-888-427-4466 or email: warranty@gorhino.com

This installation requires Road Defender Push Bumper part # 5165

Front Bumper Fascia Removal

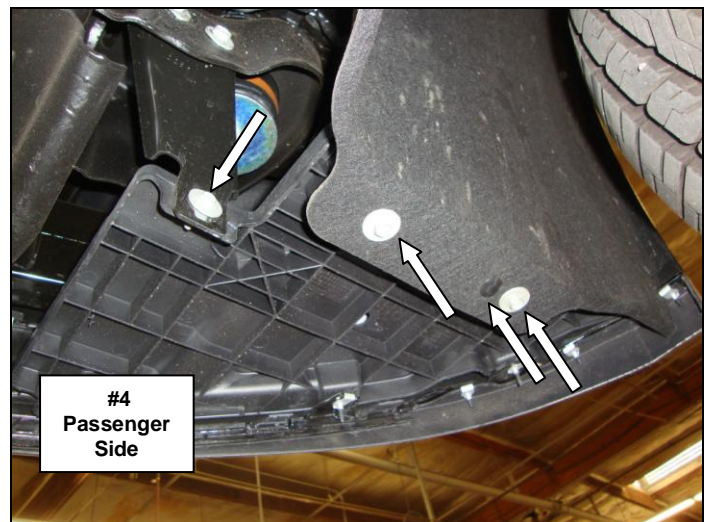
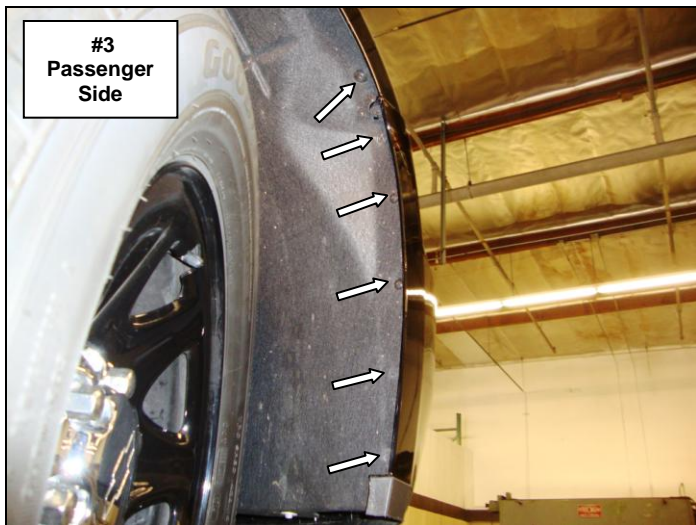
Step-1 Begin by removing the (12) plastic fasteners securing the radiator cover, (**Photo 1**)

Step-2 Remove the (6) 10mm head bolts securing the upper fascia to the core support, (**Photo 2**).



Step-3 On each side, remove the (6) 7mm head screws securing the fender liner to the fascia, (**Photo 3**).

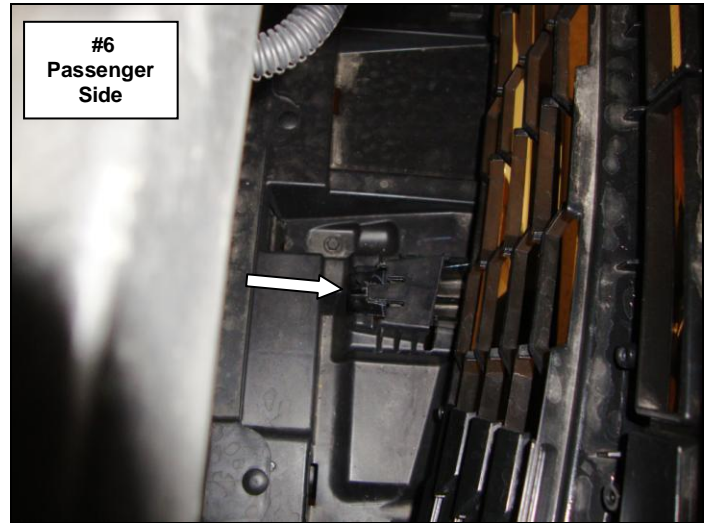
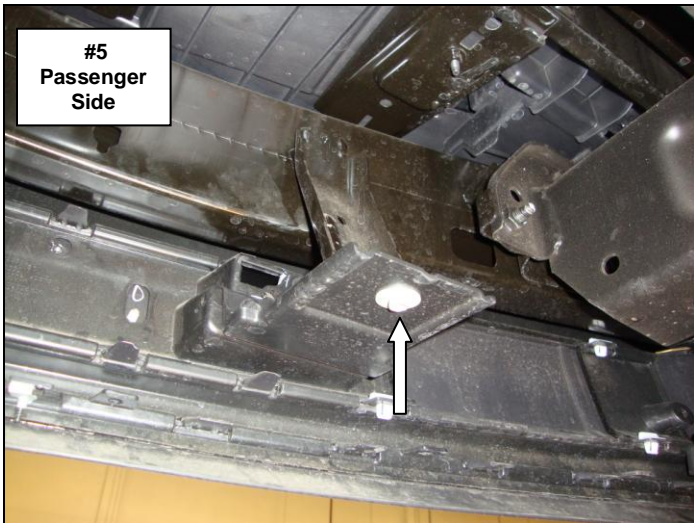
Step-4 On each side, remove (1) plastic fastener and (3) 10mm head bolts securing the bottom of the fascia to the fender liner and support bracket, (**Photo 4**).



Step-5 On each side, remove (1) 7mm (head) screw securing the fascia to the bumper impact beam bracket, **(Photo 5)**.

Step-6 On each side, pull back on the top of the fascia, locate and release a plastic clip attaching the fascia to the core support, **(Photo 6)**. In order to release it, use a screwdriver and push up on the clip to release it. It helps to pull out slightly on the fascia.

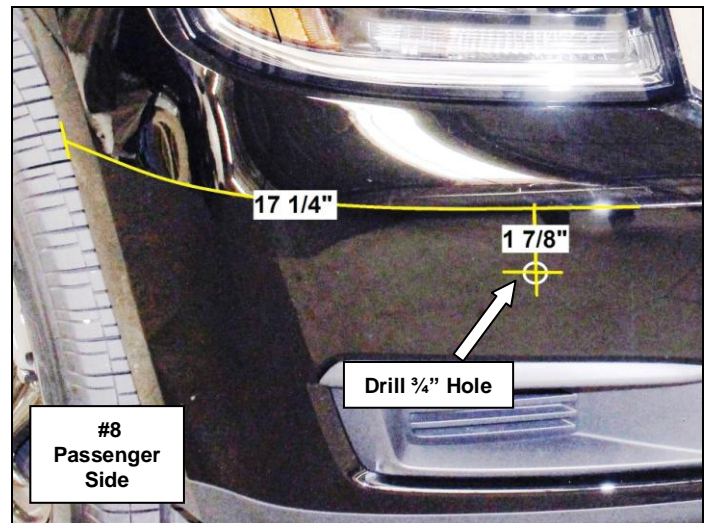
Step-7 On each side, pull back the fender liner and loosen (3) 7mm (head) screws securing the fascia's locking strip to the fender. Disconnect the fascia wiring harness, and then pull out on the corners of the fascia to remove it.



Installation

Step-8 Remove the 13mm (head) bolt located under the head light assembly, and secure the passenger side brush guard bracket to the core support using the factory bolt, **(Photo 7)**. Leave the bolt finger tight for final adjustment. Repeat this step to install the driver side bracket.

Step-9 Using the bumper fascia body line as a reference point, measure from the wheel opening along the body line, toward the center of the vehicle 17 1/4" and mark a vertical line on the bumper fascia. Measure down from the bumper fascia body line 1 7/8" and mark a horizontal line and drill 3/4" hole through the bumper fascia where the two lines intersect, **(Photo 8)**. Repeat this step for the driver side.



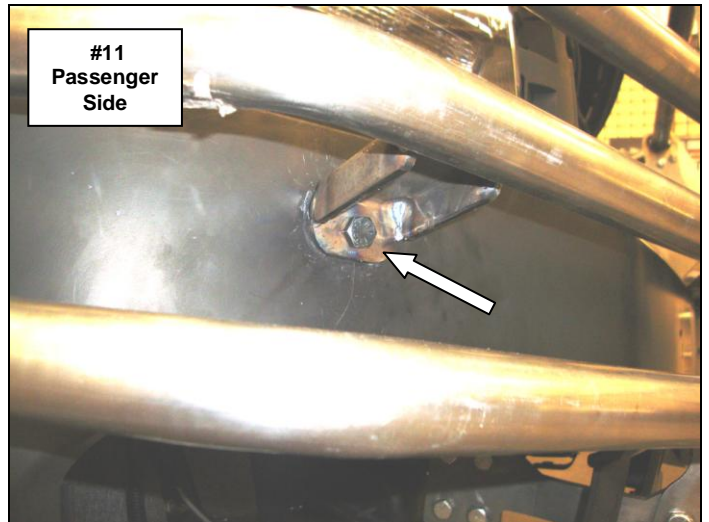
Step-10 Reinstall the bumper fascia, except the fender liner and support bracket fasteners removed in steps 3 & 4.

Step-11 Refer to the installation instructions included with the push bumper (#5165) to install the brackets and push bumper. Leave the nuts and bolts loose for final adjustment.

Step-12 Attach the passenger side brush guard to the push bumper using (5) 3/8" x 1 1/4" hex bolts, (5) 3/8" lock washers and (5) 3/8" hex nuts, **(Photo 10)**. Leave the nuts and bolts loose for final adjustment.

Step-13 Position the brush guard mounting tab against the bumper fascia, align the holes in the brush guard mounting tab, and brush guard bracket and secure the brush guard to the bumper fascia and brush guard bracket using (1) 3/8" x 1 1/4" hex bolt (1) 3/8" lock washer and (1) 3/8" hex nut, **(Photo 11)**. Leave the nuts and bolts loose for final adjustment.

Repeat steps 12 & 13 to install the driver side brush guard.



Step-14 Align the push bumper and brush guard assembly with the vehicle and tighten all factory and supplied nuts and bolts securing the push bumper and brush guard assembly and brackets.

Step-15 Install the remaining factory fasteners to secure the fender liner and fender liner support bracket.

Remember to check and retighten the push bumper and brush guard assembly nuts and bolts periodically.