

INSTALLATION INSTRUCTIONS

BRACKET	OVAl SIDER BAR WIDESIDER 4"	WHEEL TO WHEEL WIDESIDER 4"	RUNNING BOARD WIDESIDER 5" & 6"	APPLICATION	MODEL
391885	394188		39087	TOYOTA TACOMA DBL. CAB	05-23

TOOLS REQUIRED NOT INCLUDED:

DESCRIPTION	CANT.
RATCHET.	1
12 mm SOCKET	1
13 mm SOCKET	1
5" EXTENSION RACHET.	1
15mm WRENCH	1

PARTS LIST:

ITEM	QTY.		DESCRIPTION	MAX.TORO.
1	2Pc	3911886AA	FRONT DRIVER AND PASSENGER BRACKET	
2	4Pc	3911886BA	MIO AND REAR DRIVER AND PASSENGER BRACKET.	

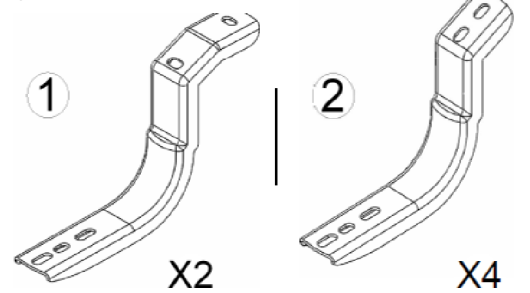
KTE-392895 HARDWARE KIT

3	12Pc	5/16X15/16" BLACK SQUARE HEAD BOLT	11LB/FT.
4	12Pc	5/16" BLACK NUT	11LB/FT.
5	12Pc	5/16" BLACK FLAT WASHER	
6	12Pc	5/16" BLACK LOCK WASHER	
7	12Pc	M8X25 ZINC PLATE HEX HEAD BOLT	11LB/FT.
8	12Pc	5/16" ZINC PLATE FLAT WASHER	
9	12Pc	5/16" ZINC PLATE LOCK WASHER	

NOTE: 394188(9-8-6-0) / 64429(B-C-PS) INCLUDE:
OVAL WIDE SIDER BAR SET.

10

pic. 1

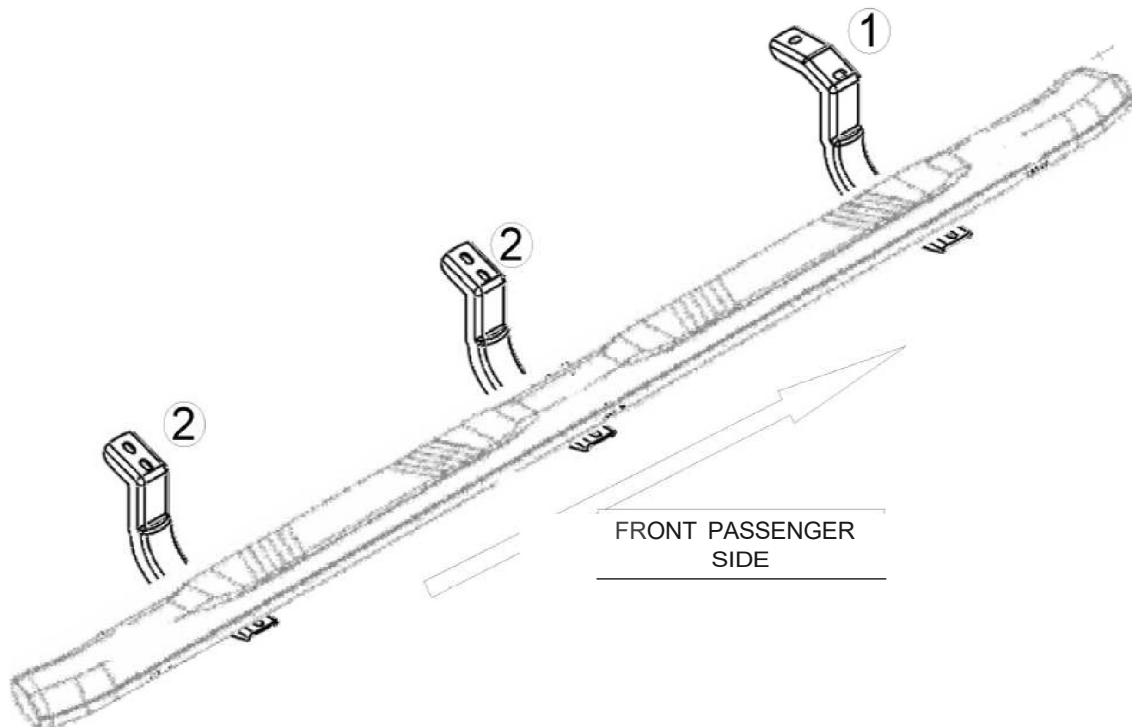


FRONT DRIVER AND
PASSENGER BRACKET

MID AND REAR, DRIVER
AND PASSENGER
BRACKET

pic. 2

APPROXIMATED INSTALLATION TIME: 30 MIN.



Cleaning and care instructions:

Design

Quality:

Protect the finish whit a non- abrasive automotive wax.(e.g. Pure carnauba) on a regular basis. The use of any soap, polish, or wax that contains an abrasive is detrimental to the finish, as the compounds scratch the finish and cause corrosion.

Revised: 03/12/2024

1 of 3

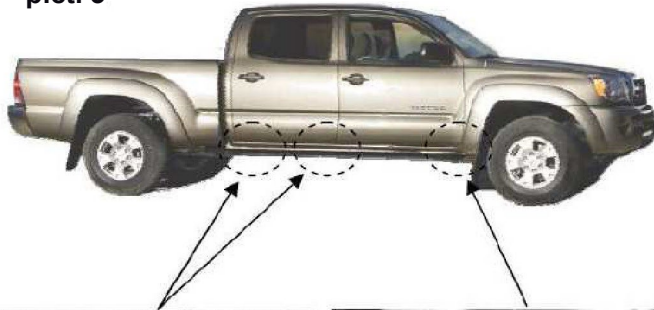
FOD17.003.E

INSTALLATION INSTRUCTIONS

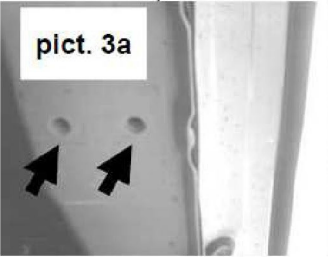
1. Before beginning the installation read all instructions Carefully and verify that all the hardware is accounted for. If There are any listed part missing please notify your Distributor immediately.

2. See pictures 3, 3a y 3b and locate the holes where the Brackets are going to be installed,

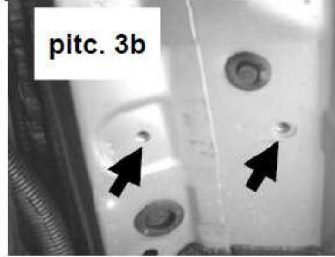
pict. 3



pict. 3a

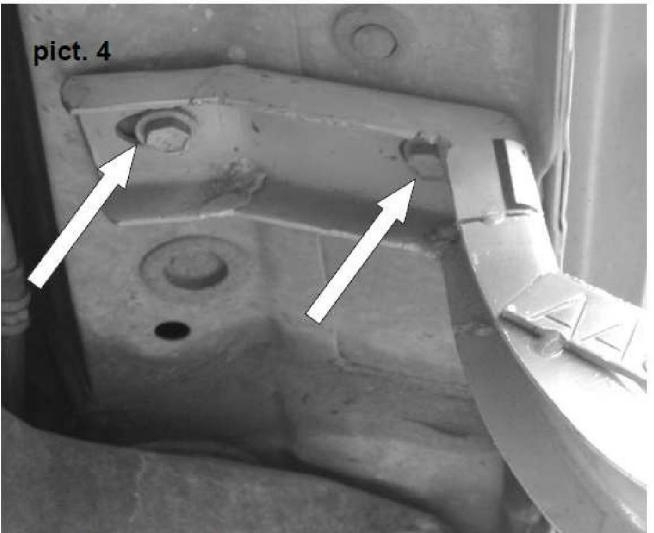


pict. 3b



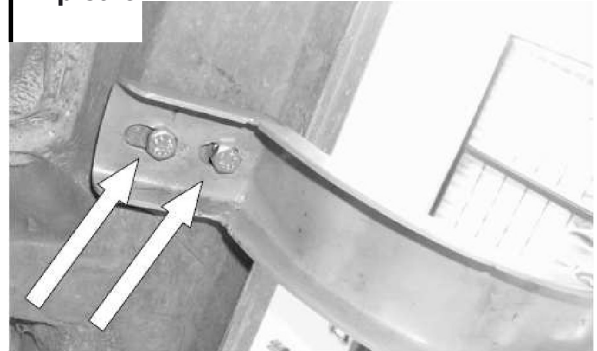
3. For the front bracket install two M8x25 hex head Galvanized bolts, two flat washers and two lock washers. See picture 4 and repeat it in the opposite side of the Vehicle. Leave loose.

pict. 4



4. To install middle and rear brackets use two M8x30 Hex head galvanized bolts, two flat washers and two lock Washers for each bracket see picture 5 and repeat it in The opposite side. Leave loose.

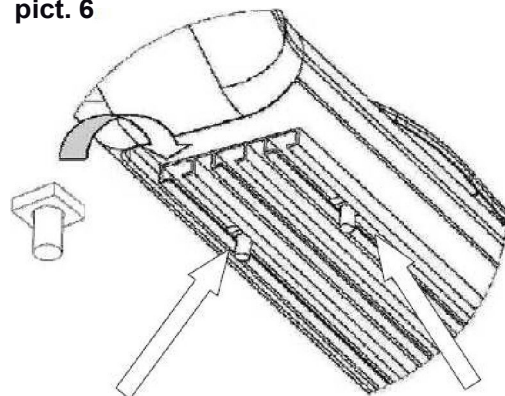
pict. 5



5. Now proceed to install the running board/ sidebar (sold separately)

6. To install the Running Board, please three square head Bolts per each channel that it's located on the bottom (discard middle channel) refer picture 6.

pict. 6



Cleaning and care instructions:

Design:

Quality:

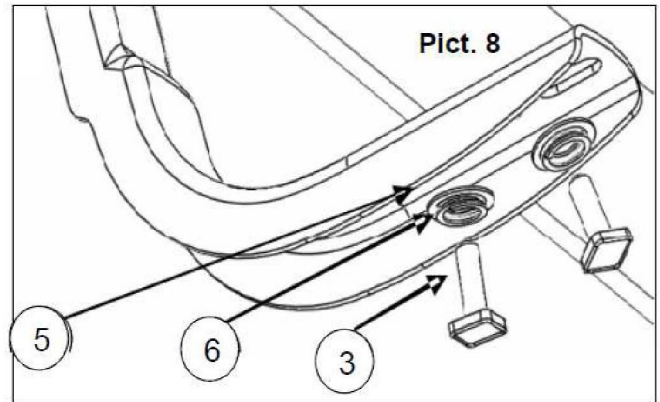
Protect the finish whit a non- abrasive automotive wax (e g Pure carnauba) on a regular basis. The use of any soap, polish, or wax that contains an abrasive is detrimental to the finish, as the compounds scratch the finish and cause corrosion.

INSTALLATION INSTRUCTIONS

7. Place the Running Board above the brackets attach it with 5/16" nuts, six flat washers and six lock washers, per side. All in a black color. See picture 7 and repeat in the opposite Side. Leave loose.



8. If you are going to install an oval sidebar use two flat Washers, two lock washers and two 5/16" nuts per bracket (all hardware in black). See picture 8 and repeat in the Opposite side. Leave loose.



9. Align Sidebar, then tighten all bolts.
10. Do not use abrasive substances to clean this product.
11. Periodically check and re-tighten any loose hardware.
12. Fill out the warranty card and place it inside your vehicle's glove box

Cleaning and care instructions:

Design:

Quality:

Protect the finish with a non-abrasive automotive wax (e.g. Pure carnauba) on a regular basis. The use of any soap, polish, or wax that contains an abrasive is detrimental to the finish, as the compounds scratch the finish and cause corrosion.

Revised: 03/12/2024

3 of 3

FOD17.003.E