

INSTALLATION INSTRUCTIONS

2015 - Current Ford F150 Super Crew (+ 17-C Raptor, 22-C Lightning)

2017 - Current Ford SuperDuty Crew Cab

37969X

PARTS LIST

Item	Qty.	Part No.	Description	Torque
1	1 set	37969	SIDE BAR	
2	1 set	373704AA	FRONT BRACKET	
3	1 set	379694BA	AUXILIARY BRACKET	
4	2 set	379690BA	CENTER/REAR BRACKET	
5	2		1/2" X 2" HEX BOLT	
6	2		1/2" FLAT WASHER	
7	2		1/2" SPRING LOCK WASHER	
8	18		M8 NUT GRAY PLATED	
9	18		5/16" FLAT WASHER GRAY PLATED	
10	18		5/16" SPRING LOCK WASHER GRAY PLATED	
11	4		5/16" X 1" CARRIAGE HEAD BOLT	
12	4		5/16" FLAT WASHER BLACK	
13	4		5/16" SPRING LOCK BLACK	
14	4		5/16" HEX NUT BLACK	
15	8		3/8 x 1 1/4" HEX HEAD BOLT	
16	8		3/8" FLAT WASHERS	
17	8		3/8" SPRING LOCK WASHERS	

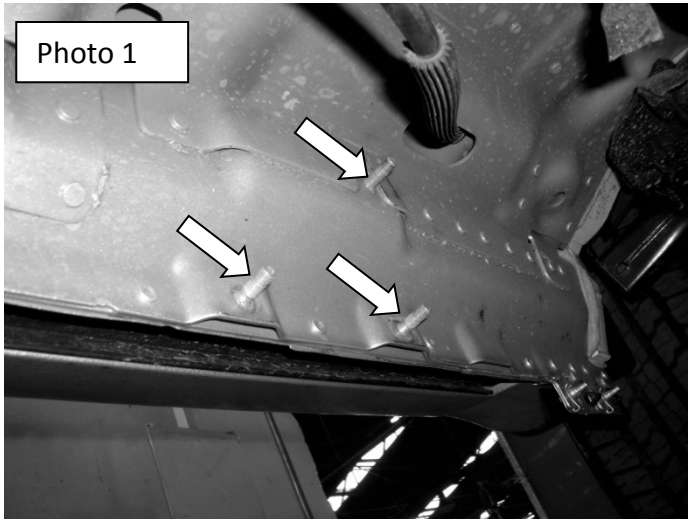
Tool Required:

- A. 1/2", 9/16", 3/4" & 13mm Wrench
- B. Ratchet
- C. Ratchet extension
- D. 1/2", 9/16", 3/4" & 13mm socket

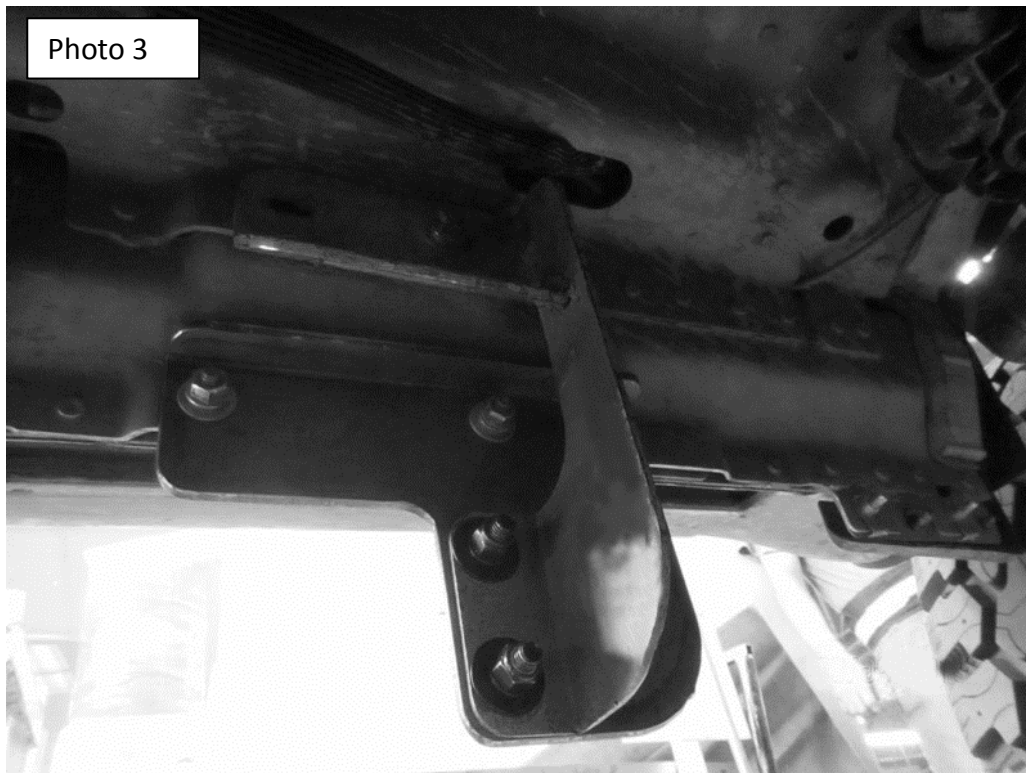
Before beginning the installation read all instructions thoroughly and verify that all hardware is accounted for. If there are any listed parts missing, please notify your distributor immediately.

To maintain and care this product keep it clean and do not use abrasive cleaners or polish waxes. It is recommended to use only non-abrasive automotive wax such as pure carnauba to avoid scratches and rust.

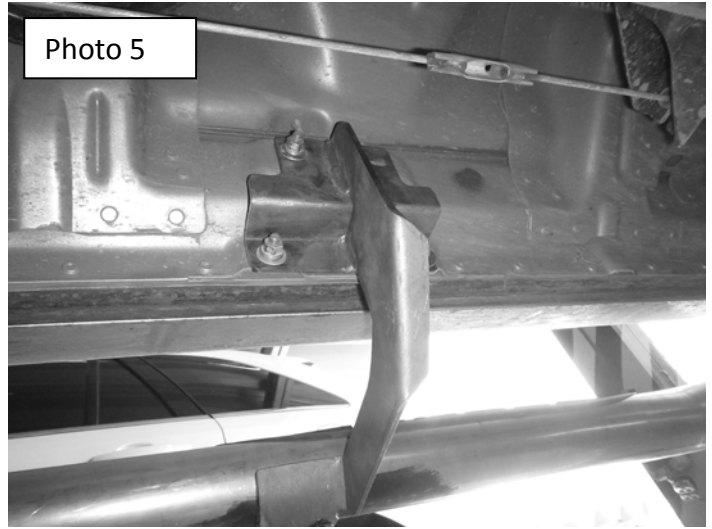
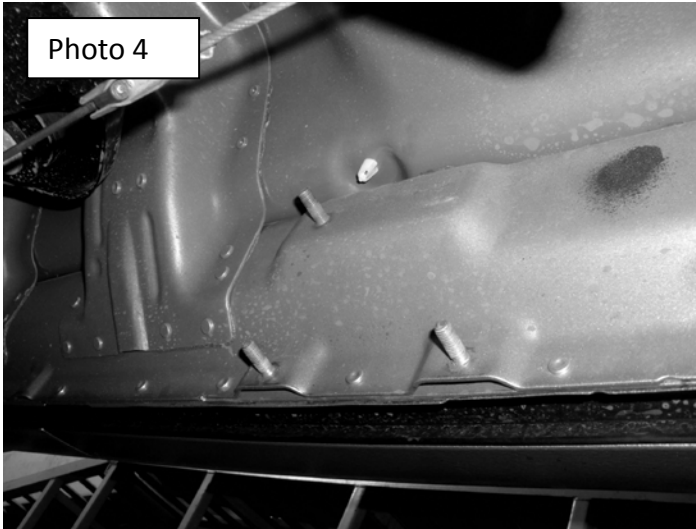
1. Beginning with the driver side, locate the three M8 welded bolts in the rocker panel at the front of the cab (**Photo 1**). Install the front bracket using (2) 5/16" flat washers Gray P., (2) 5/16" spring lock washers Gray P. and (2) M8 hex nut Gray P. Leave loose for final adjustment. (**Photo 2**)



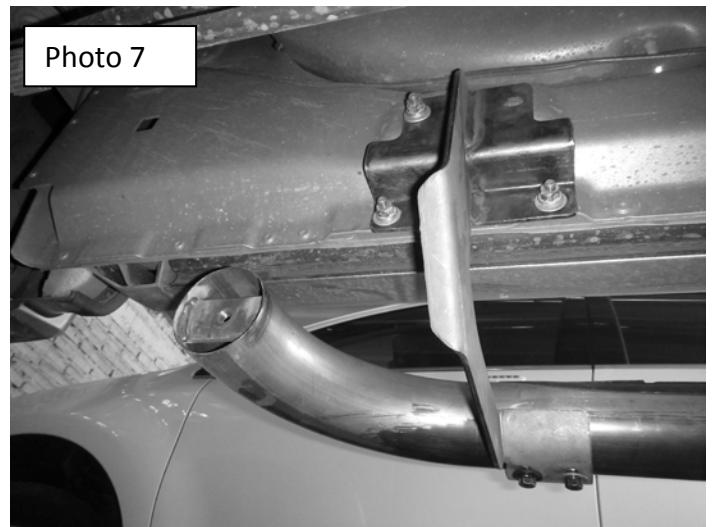
2. Install the auxiliary bracket using (1) b M8 hex nut Gray P., (1) 5/16" flat washer Gray P. and (1) 5/16" spring lock washer Gray P. Then attach the auxiliary bracket to the front bracket using (2) 5/16" carriage head bolt Black P., (2) 5/16" flat washers Black P., (2) 5/16" spring lock washers Black P. and (2) 5/16" hex nuts Black P. Leave loose for final adjustment. (**Photo 3**)



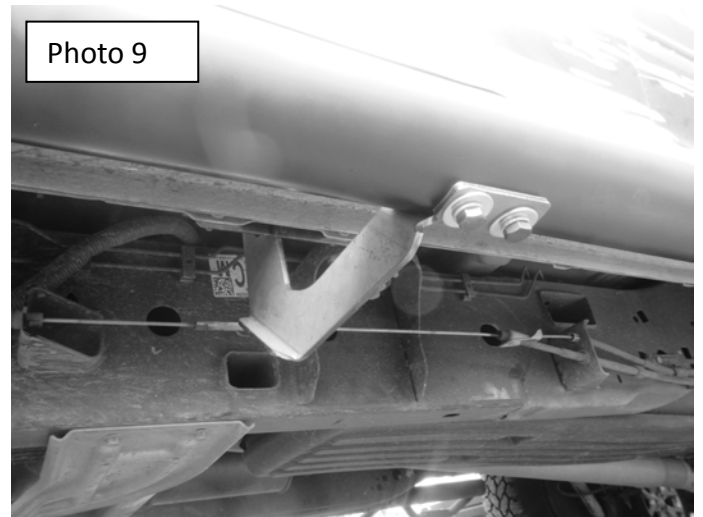
3. Locate the three M8 welded bolts in the rocker panel at the middle of the cab. Install the center bracket using (3) 5/16" flat washers Gray P., (3) 5/16" spring lock washers Gray P. and (3) M8 hex nut Gray P. Leave the nuts loose for final adjustment. **(Photo 4 & 5)**



4. Locate the three M8 welded bolts in the rocker panel near the end of the cab. Install the rear bracket using (3) 5/16" flat washers Gray P., (3) 5/16" spring lock washers Gray P. and (3) M8 hex nut Gray P. Leave the nuts loose for final adjustment. **(Photo 6 & 7)**



5. Attach the side bar to the front bracket using (1) 1/2" x 2" hex bolt, 1/2" flat washer and 1/2" spring lock washer. **(Photo 8)**. Secure to the center and rear bracket using (2) 3/8 x 1 1/4" hex bolts, (2) 3/8" flat washers and (2) 3/8" spring lock washers, by each bracket. **(Photo 9)**. Leave the bolts loose for final adjustment.



6. Align the side bar with the vehicle and tighten all brackets and side step nuts and bolts. **(Photo 10)**



7. Repeat the above process to install the passenger side brackets and side bar.