

INSTALLATION INSTRUCTIONS

Side Bar

2015 - Current Ford F150 SuperCab (+ 17-C Raptor)

2017 - Current Ford SuperDuty SuperCab

37929X

PARTS LIST

Item	Qty.	Part No.	Description	Torque
1	1 set	37929	SIDE BAR	
2	2 set	379690BA	FRONT/REAR BRACKET	
3	12		M8 NUT GRAY PLATED	20 LbFt
4	12		5/16" FLAT WASHER GRAY PLATED	
5	12		5/16" SPRING LOCK WASHER GRAY PLATED	
6	8		3/8 x 1 1/4" HEX HEAD BOLT	36 LbFt
7	8		3/8" FLAT WASHERS	
8	8		3/8" SPRING LOCK WASHERS	

Tool Required:

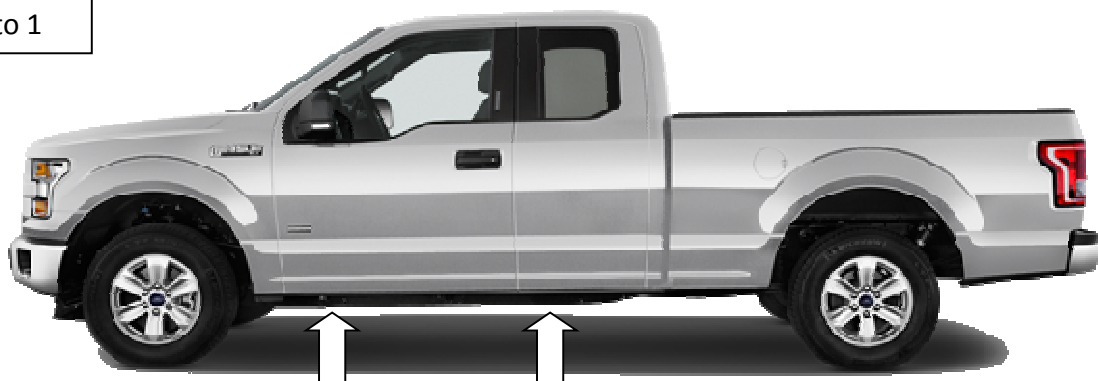
- A. 9/16" & 13mm Wrench
- B. Ratchet
- C. Ratchet extension
- D. 9/16" & 13mm socket

Before beginning the installation read all instructions thoroughly and verify that all hardware is accounted for. If there are any listed parts missing, please notify your distributor immediately.

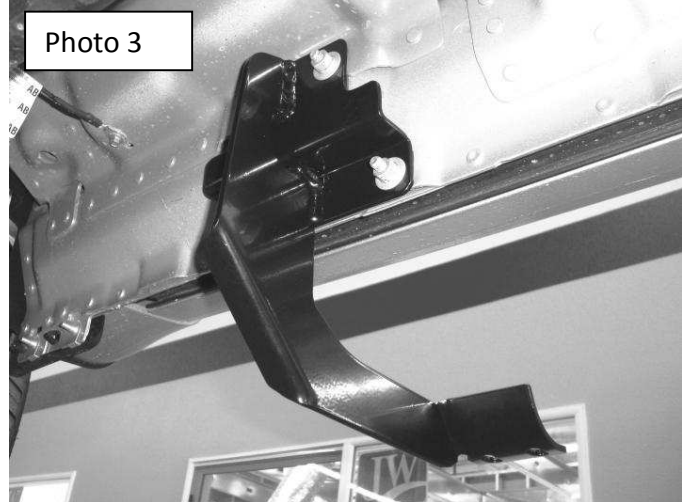
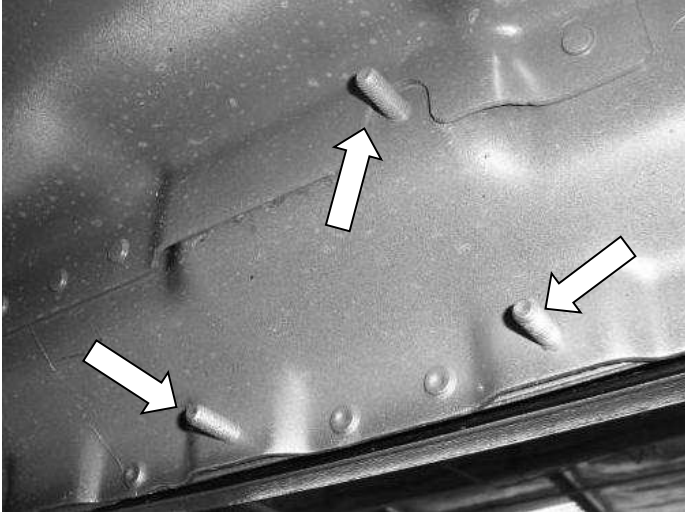
To maintain and care this product keep it clean and do not use abrasive cleaners or polish waxes. It is recommended to use only non-abrasive automotive wax such as pure carnauba to avoid scratches and rust.

1. This installation uses 2 mounting brackets per side, **(Photo 1)**.

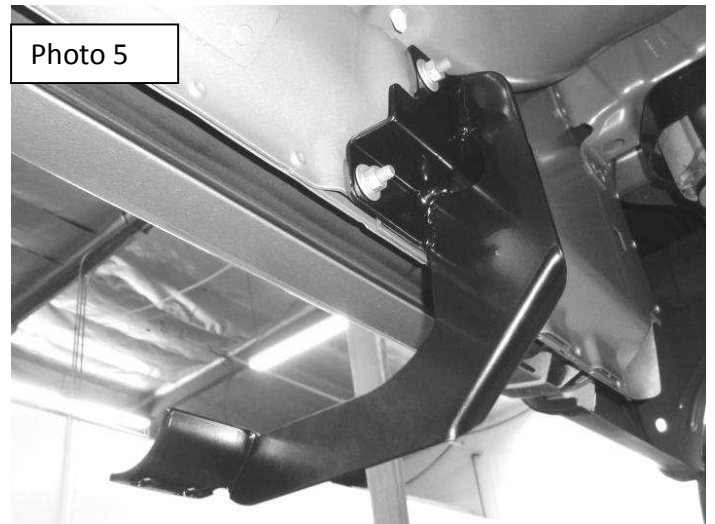
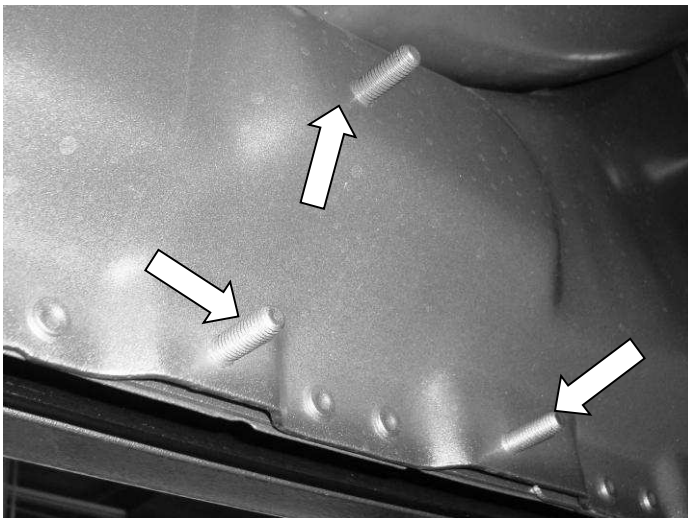
Photo 1



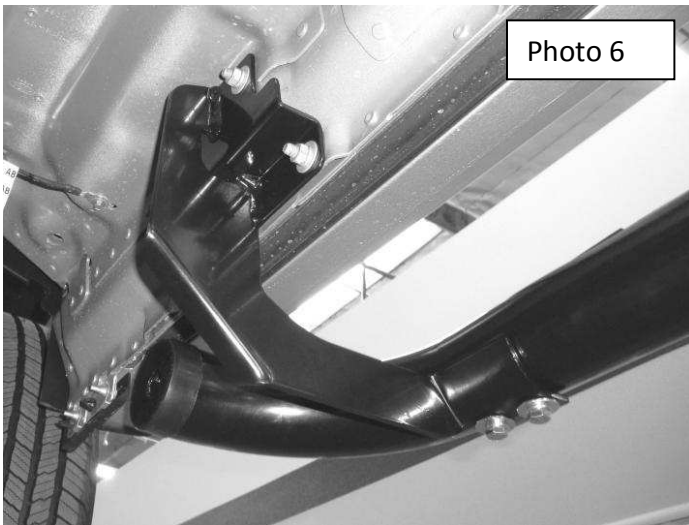
2. Begin the installation on the passenger side. Starting at the front of the vehicle, locate the (3) threaded studs on the inner rocker panel, **(Photo 2)**.
3. Install the passenger front bracket by positioning the bracket over the studs and secure to the rocker panel using (3) 5/16" flat washers, (3) 5/16" lock washers and (3) M8 hex nuts. Leave the nuts loose for final adjustment, **(Photo 3)**.



4. Locate the (3) threaded studs on the inner rocker panel at the rear of the cab and repeat the above steps to install the passenger rear bracket, **(Photo 4 & 5)**.



5. Attach the passenger side step to each bracket using (2) $\frac{3}{8}$ " x $1\frac{1}{4}$ " hex bolts, (2) $\frac{3}{8}$ " flat washers and (2) $\frac{3}{8}$ " lock washers. **(Photo 6)**. Leave loose.



6. Align the side step with the vehicle and tighten all bracket and side step nuts and bolts. Repeat the above steps to install the driver side brackets and side step. Remember to check and retighten the nuts and bolts every six months.

