

INSTALLATION INSTRUCTIONS

37056

01 - 04 Nissan Frontier Crew Cab

Parts List :

QTY	(1) Hardware kit including :
(1) Sidebar set (Left & Right)	(4) 1/2 x 2" Hex head bolt
(2) Front mounting bracket (left & right)	(2) 1/2 x 1 1/2" carriage head bolt
(2) Rear mounting bracket (left & right)	(2) 1/2 x 1 1/2" cut carriage head bolt
(2) Auxiliary mounting bracket (left & right)	(2) 1/2 x 3 1/2" Hex head bolt
(2) Spacer washers	(10) 1/2" Flat washer
	(8) 1/2" Lock washer
	(4) 1/2" Hex nut
	(2) 1/2" Lock nut

Tools Required :

3/4" Socket	Ratchet
3/4" Wrench	14mm Socket

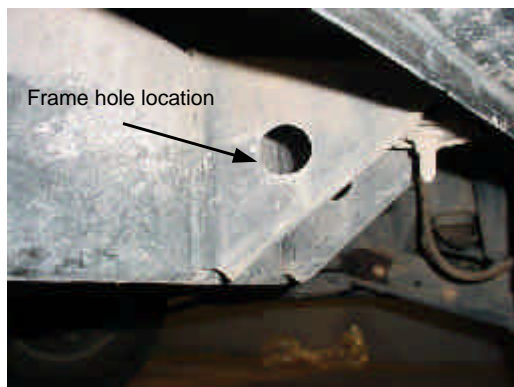
Instructions :

Approximated installation time: 30 min.

1. Read and understand instructions completely before beginning installation.
2. Sidebar set consist of a driver and passenger side. Be sure to determinate the correct side before installation.
3. Locate existing holes in the frame at front of vehicle shown in Picture 1 & 2.
4. To install front mounting bracket, pass through the o-round a 1/2 x 1 1/2" cut carriage head bolt, turn 1/4 counterclockwise to retain the head of the bolt, then secure the bracket to the bolt using 1/2" flat & lock washer and hex nut. Picture 3. Secure to the other hole using a 1/2 x 1 1/2" carriage head bolt, lock washer, space washer and hex nut. Picture 4. Leave loose.
5. To install rear mounting bracket, locate and remove rear body mount bolt as shown in Picture 5, then place rear mounting bracket and re-attach using the bolt removed. The body steel cap are reused between the body mount and the rear mounting bracket.
6. Place auxiliary rear mounting bracket as shown in Picture 6, then pass through the auxiliary bracket and hole frame a 1/2 x 3 1/2" hex head bolt with a flat washer, secure using a flat washer and lock nut. Hand tighten.
7. Place the sidebar up to the mounting brackets and bolt to the front mounting bracket using the 1/2 x 2" hex head bolt, flat and lock washer. Bolt to the rear and auxiliary mounting bracket using a 1/2 x 2" hex head bolt with corresponding washers. Leave loose.
8. Make any final adjustments to the alignment of the sidebar and tighten all bolts. Repeat for the opposite side.
9. You may need to periodically re-tighten the bolts.

Assembly Diagram :

Picture 1



Picture 2



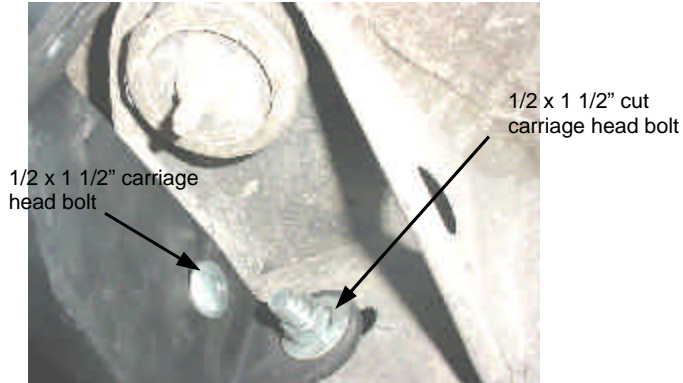
Introduce here a 1/2 x 1 1/2" cut carriage head bolt

INSTALLATION INSTRUCTIONS

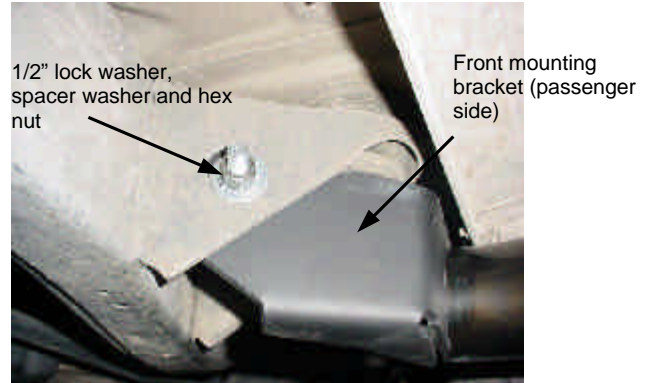
37056

01 - 04 Nissan Frontier Crew Cab

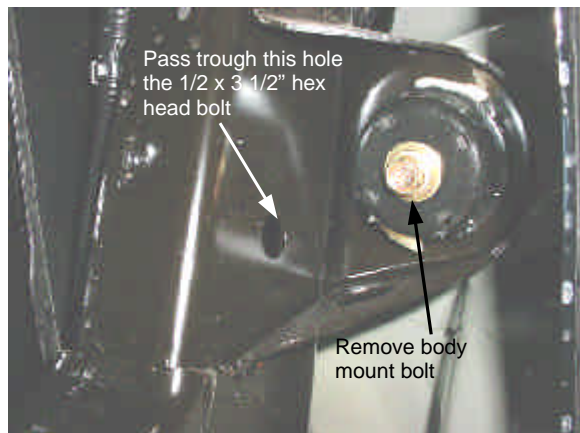
Picture 3



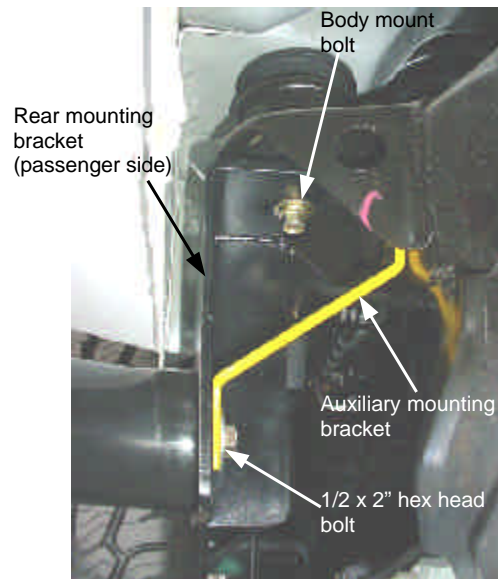
Picture 4



Picture 5



Picture 6



Cleaning and care instructions :

Protect the finish with a non-abrasive automotive wax, (e.g. Pure Carnauba) on a regular basis. The use of any soap, polish, or wax that contains an abrasive is detrimental to the finish, as the compounds scratch the finish and cause corrosion.