



MADE IN THE USA

INSTALLATION MANUAL
JL & JT JEEP FULL FRONT BUMPER
2018-PRESENT
FB-F-300-JL/FB-S-300-JL
FB-F-301-JL/FB-S-301-JL
OPTIONAL BULL BAR AND WINGS



New Quest Series Front Bumpers!

Hardware Description	Quantity
7/16-14X1 1/2 Hex Nut GR8	4
7/16-14 Nut GR8 , ZnY	4
Flat washer, 7/16, ZnY	12
Black-Oxide 3/8" 18-8 Stainless Steel Washer	12
3/8"-16 Thread Size, 3/4" Long 18-8 Stainless Steel Button Head Hex Drive Screws, Black-Oxide	8
8-32 Black-Oxide 18-8 Stainless Steel Washer	8
1/4-20 x 3/4 18-8 Stainless Steel Button Head Hex Drive Screws	8
3/8"-16 18-8 Stainless Steel Nylon-Insert Lock-nut	2
5/16" Black-Oxide 18-8 Stainless Steel Washer	8
5/16"-18 High-Strength Steel Nylon-Insert Lock-nut Black Oxide	8
5/16"-18 18-8 Stainless Steel Button Head Hex Drive Screws	8
Locking Panel Plugs	1
3/8"-16 Black Oxide 18-8 Stainless Steel Hex Head Screw	2
8-32 x 5/8 18-8 Stainless Steel Button Head Hex Drive Screws	8
1/4-20 18-8 Stainless Steel Nylon-Insert Locknut	8
1/4 Black-Oxide 18-8 Stainless Steel Washer	8

Tools Required
3/16" Allen Head Wrench
11/16" Socket
5/8" Socket
1/2" Socket
Wrench with 3-4" Extension
Optional for quicker install:
Impact gun with adapters



Scan this code to leave us a review!

With any support questions, give us a call at 435-752-4580

Step 1

Before beginning the installation of your new Rock Slide Engineering bumper, remove the factory bumper and retain the original hardware, as some of it will be reused during installation.



Step 2

Locate the inner steel frame piece and slide it into the front frame of the vehicle. If you are installing the optional flat tow brackets see step 3. If not, secure the outside bolts using the provided washers and nuts, and tighten to 75 ft-lb.

Note: If installing fog lights, complete that installation prior to installing the inner steel frame piece.



Step 3 -Optional

If you are installing the optional flat tow brackets, ensure they are installed before tightening the nuts and washers in Step 2. Position the bracket over the two studs and secure it using the provided washers and nuts. Torque to 75 ft– lb. Once the bracket is in place, insert the long gold bolts through the designated hole as shown below, and secure them with the included washers and nuts. Torque to 50 ft– lb. Insert factory bolt through top hole and tighten to factory spec.



Note: These brackets are only necessary if you intend to flat tow from the front bumper, as shown below.



Step 4

Install the four 1-1/2 inch bolts, along with the corresponding washers and nuts, into the inner mounting holes on the frame as shown below. Torque to 75 ft-lb.

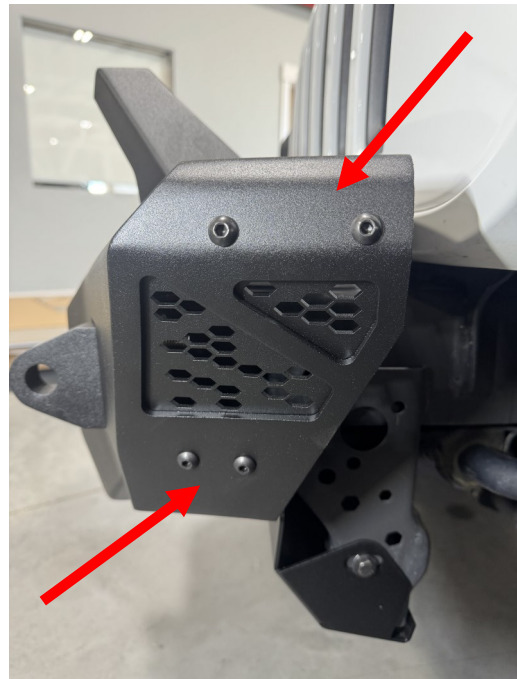
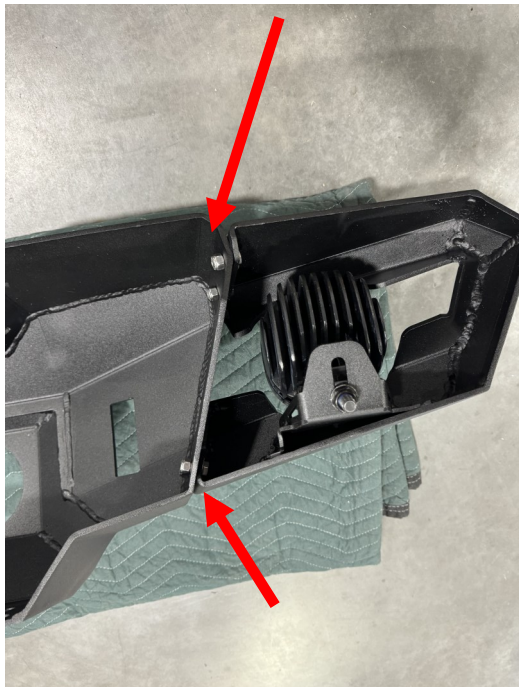
Next, use the factory bolts to secure the winch plate tabs to the frame of the vehicle and tighten bolts to factory spec.

Once securely mounted to the frame, install winch according to the winch manufacturer's instructions.



Step 5

If you have the full-width bumper, install both wing sections onto the bumper using the provided hex bolts, washers, and nuts. If you did not receive the full-width bumper, install the honeycomb end caps on both sides of the bumper using the supplied button head bolts, washers, and nuts. Tighten hand tight. At this stage, install the lights into the wing sections as applicable.

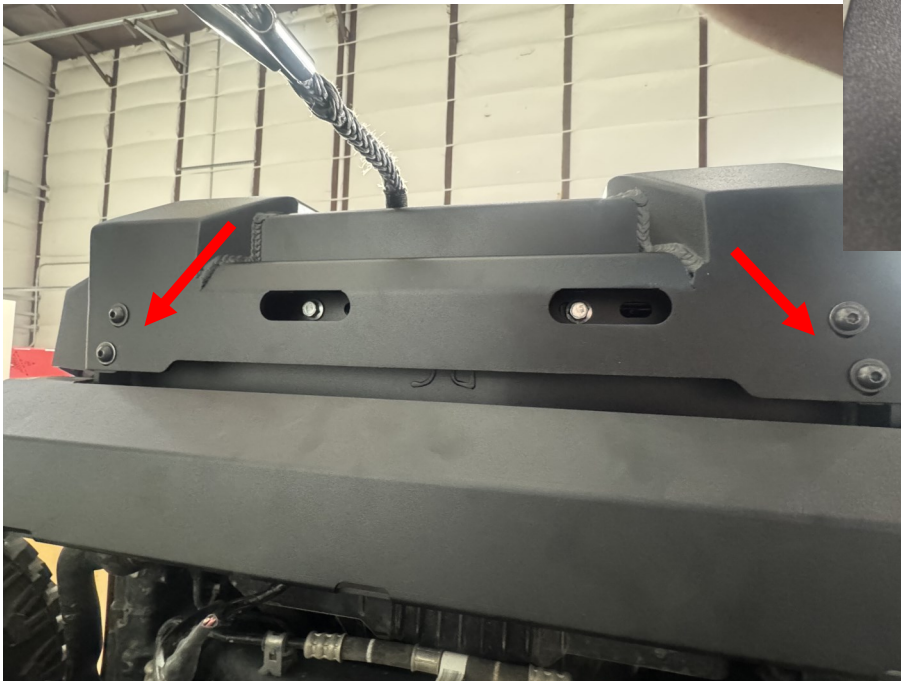


Step 5

Install the outer shell of the bumper over the inner steel frame. Begin by installing the button head bolts and washers on the top of the bumper—two per side. If you are installing the bull bar it will be installed with the same bolts and washers. Tighten all button head bolts hand tight. You can install your light bar bracket before or after you install your bull bar.

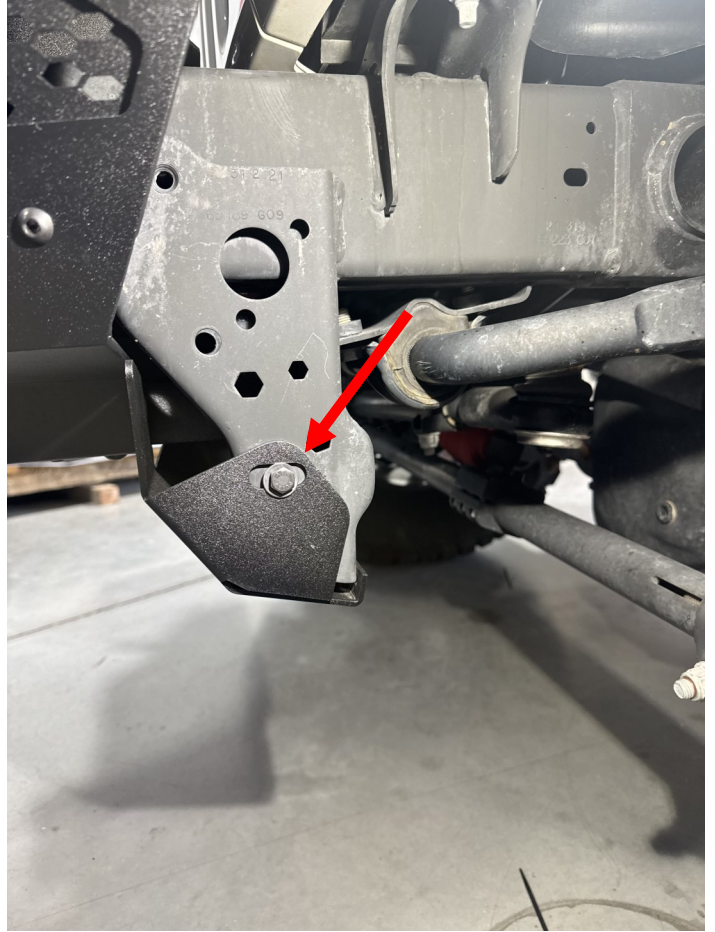
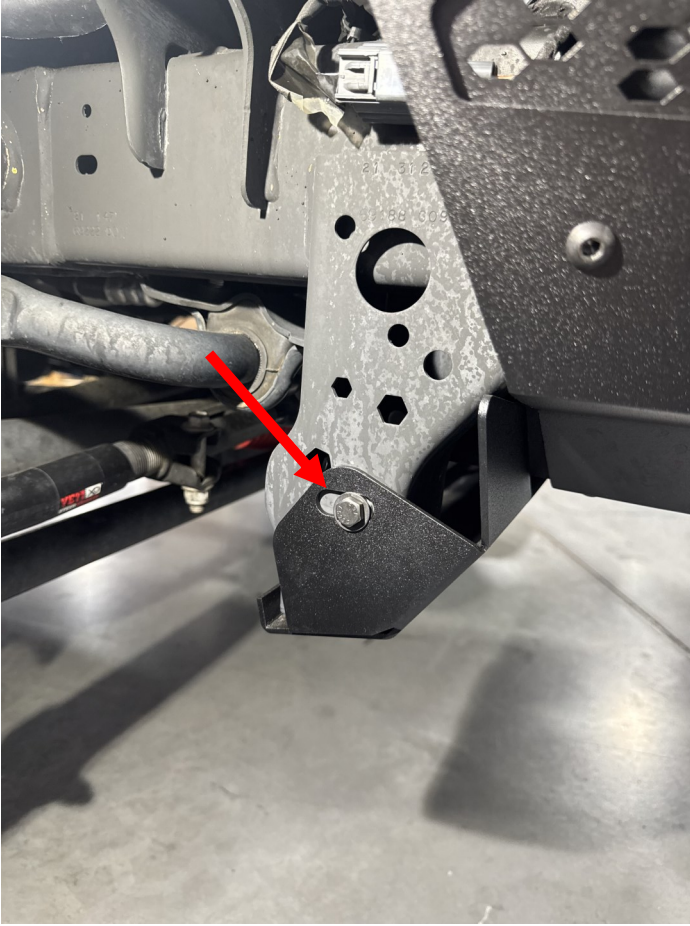


Install the four button head bolts and washers underneath the bumper, and tighten them by hand.



Step 7

Finally, install the cross plate using one bolt on each side, as shown below.



Your install is now complete.

WARRANTY POLICY

LIMITED TWELVE (12) MONTH WARRANTY FOR FINISH AND ELECTRICAL COMPONENTS

Rock-Slide Engineering, LLC (“RSE”) warrants to the original purchaser that (a) the structural and mechanical components of the Step Sliders will be free of defects in material and workmanship for the lifetime of the Step Sliders (the “product”), and (b) the finish (powder coat) and the electrical components (including the motor) will be free of defects in material and workmanship for a period of twelve (12) months from the original date of purchase. This warranty applies only to the original retail purchaser. Warranty is void if product was not purchased directly from R- SE or from an authorized RSE retailer or reseller. This warranty applies only with regard to the product as originally installed to the original vehicle. This warranty does not cover removal or reinstallation of the product.

To exercise this warranty and receive any warranty service, the original purchaser must provide RSE with proof of purchase and date of purchase that is acceptable to RSE, such as a copy of the original purchaser’s purchase receipt. The original purchaser must return the defective product to RSE along with a description of the problem, a copy of the original purchase receipt, the original bill of sale and all contact information (name, address, telephone number and email address). To begin the warranty process, the original purchaser must email RSE’s warranty department. During this warranty term, and upon the original purchaser’s valid exercise of this warranty, RSE shall, at its option, repair or furnish the replacement product in the event the original product is deemed by RSE to be defective. RSE’s sole liability shall be for repairing or replacing the product, but RSE may refund the purchase price at its sole discretion and option. The original purchaser is responsible for prepayment of all shipping and/or transportation charges with respect to the exercise of this warranty. The product may change without notice. In the event of a product change, RSE has no obligation to upgrade or modify any older generation product.

THE WARRANTY SET FORTH HEREIN IS THE ONLY WARRANTY COVERING THE PRODUCT. NO OTHER WARRANTY EXISTS, EXPRESS OR IMPLIED, INCLUDING, WITHOUT LIMITATION, IMPLIED WARRANTIES OF MERCHANTABILITY AND/OR FITNESS FOR A PARTICULAR PURPOSE. No retailer, reseller, dealer, agent, or employee is authorized to make any modifications, extensions, amendments, or additions to this warranty.

This warranty shall be void in its entirety if RSE determines that the product installation was modified, changed, altered, customized or in any way used other than as instructed. Installation of the product without strictly adhering to the installation instructions shall void this warranty. Installation must be on the proper vehicle or warranty is void.

RSE SHALL NOT BE LIABLE FOR SPECIAL, INDIRECT, INCIDENTAL OR CONSEQUENTIAL DAMAGES, UNDER ANY LEGAL THEORY AND/OR UNDER ANY CIRCUMSTANCE WHATSOEVER. IN ANY EVENT, ANY DAMAGES IN ANY SITUATION SHALL BE LIQUIDATED DAMAGES AND MAY NOT EXCEED THE RETAIL PRICE OF THE PRODUCT. RSE SHALL NOT BE LIABLE FOR ANY LOSS, DAMAGE OR INJURY DIRECTLY OR INDIRECTLY ARISING FROM THE USE OF OR INABILITY TO DETERMINE THE USE OF THE PRODUCT. THE ORIGINAL PURCHASER IS RESPONSIBLE TO DETERMINE THE SUITABILITY OF THE PRODUCT FOR ITS INTENDED USE, PRIOR TO USING THE PRODUCT, AND THE ORIGINAL PURCHASER ASSUMES ALL RESPONSIBILITY AND RISK IN CONNECTION THEREWITH.

For questions or concerns: please contact our office at 435-752-4580 and ask for the warranty department or email us at warranty@rockslideengineering.com.