

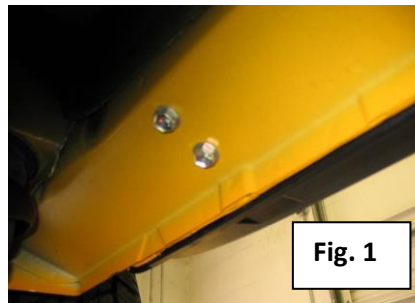


PART NUMBER:
T154RKRCC,T154RKRQC
PRODUCT: **RKR RAIL**
APPLICATION: **15-16 TACOMA**

Bolt Kit:
• 10) 8mm x 1" bolts
• 10) 5/16" washers
• 10) 8mm lock washers
Tools Needed:
• 13mm wrench



1. Remove the bars from their box and locate the bolt kit. Remove any factory hardware. See **Figure 1**



2. Position the step to the driver side of the vehicle. See **figure 4** to locate driver and passg.

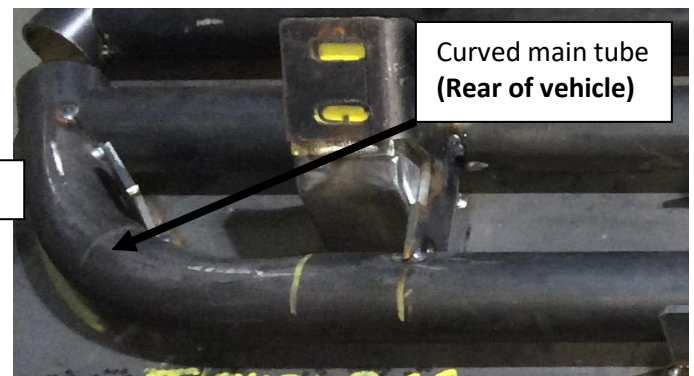
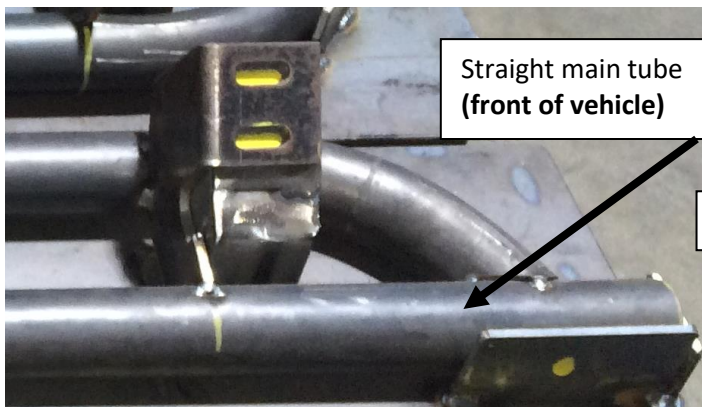
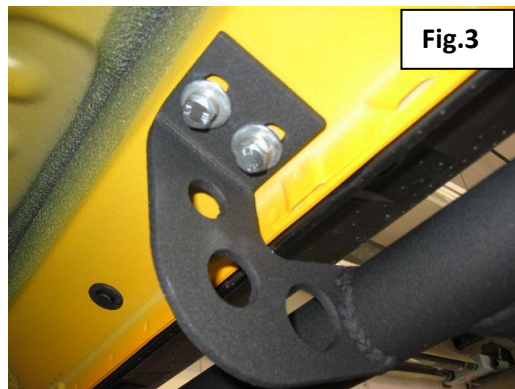


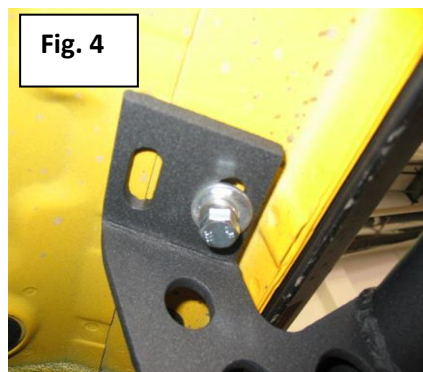
Fig. 4

3. Starting with the center bracket, start one 8mm hex bolt, 8mm lock washer and 8mm flat washer into the factory bolt location. **NOTE:** *Step board should hang in location with the bent flange toward the rear of the vehicle.* Start the other 8mm nut, 8mm lock washer and 8mm washer on the same bracket and hand tighten. **Figure 3**



4. Start all of the remaining 8mm hex bolts, 8mm nuts, 8mm lock washers and 8mm flat washers at each bracket. **NOTE:** The front bracket only uses one 8mm bolt and washer per side. Torque each bolt to 15ft/lbs. See **Figure 4**

5. Repeat installation procedure on the other side. This concludes the step installation



Detachable step Installation:

1. Attach the step to the step mounts using the supplied 1/2" bolts and lock nuts.

NOTE: The step will mount to the left side of the mounts. **(Fig. 2a.)**

2. Torque hardware to 40 ft/lbs .

